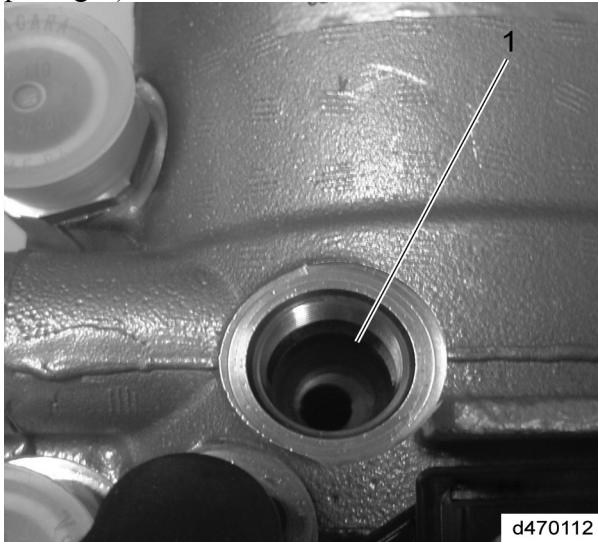


## 2.5.3 Inspection of the Gallery Bypass Valve - Three-Filter System

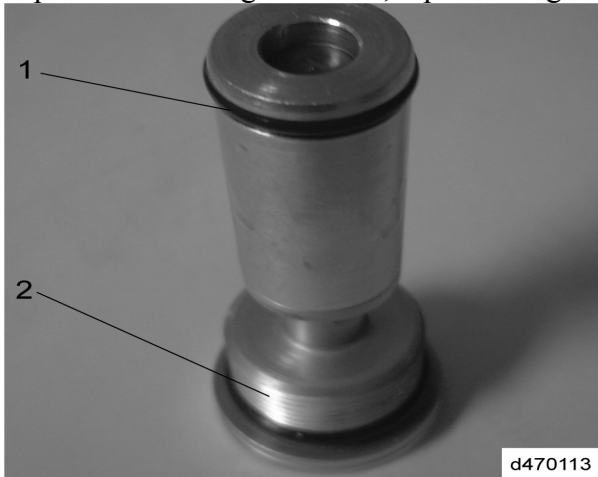
Inspect as follows:

[Show/Hide Checkboxes](#)

1. Inspect the gallery bypass bore (1) for any debris. If debris is present, use a vacuum to remove the debris (Do NOT use compressed air as it may lodge particles in the fuel filter module passages).



2. Visually inspect the gallery bypass valve threads (2), ports and O-ring (1) to ensure no damage is present. If damage is found, replace the gallery bypass valve.



3. Inspect the valve piston for damage and for being stuck. Using a small screwdriver, depress the piston in the valve. The piston should smoothly slide in and return to the end of the valve. If the piston sticks or has damage, replace the valve.