

CONNECTOR INFORMATION FOR DIAGRAM: P94-1935

REF_DES	NUMBER OF CAVITIES	ON SHEET	PART NUMBER	DESCRIPTION	LOCATION OF CONNECTOR
J028	52	3	P20-1172-1252	BLACK, AMP MOS 52-WAY, UNSEALED	AT CECU HOTEL IN DASH
J381	30	4	P20-1355-230	BLACK, PACKARD, GT SERIES, UNSEALED	LH BEHIND DRIVER AT SLPR CAB JOINT
J382	6	4	12110698	BLACK, PACKARD, METRI-PACK 800 SERIES, UNSEALED	LH BEHIND DRIVER AT SLPR CAB JOINT
J501	4	4	K333-433	BLACK, PACKARD, METRI-PACK 630 SERIES, UNSEALED	BEHIND SLEEPER CONTROL PANEL
J502	30	4	P20-1355-130	BLACK, PACKARD, GT SERIES, UNSEALED 30-WAY	BEHIND SLEEPER CONTROL PANEL
J507	8	4	P20-6041	BLACK, PACKARD, METRI-PACK 150 SERIES, UNSEALED	BEHIND SLEEPER CONTROL PANEL
P001	46	3	P20-1301-001	BLACK, A-POLE mPDC (ALCOA)	AT PDC ON FIREWALL
P002	46	3	P20-1301-002	GRAY, B-POLE mPDC (ALCOA)	AT PDC ON FIREWALL
P003	46	3	P20-1301-003	BLUE, E-POLE mPDC (ALCOA)	AT PDC ON FIREWALL
P004	46	3	P20-1301-004	DARK GREEN, D-POLE mPDC (ALCOA)	AT PDC ON FIREWALL
P006	64	3	P20-1314-32201	GRAY, AMP MCP SERIES, UNSEALED	LH FIREWALL CAB SIDE
P020	10	3	15459918	BLACK, DELPHI GT 150 SERIES, UNSEALED	MIDDLE OF DASH, TOP OF A/C UNIT
P021	2	3	P20-1021	BLACK, PACKARD, METRI-PACK 630 SERIES, UNSEALED	MIDDLE OF DASH, TOP OF A/C UNIT
P022	26	3	1924136-3	BLACK, TYCO GEN Y 26-WAY, UNSEALED	BEHIND CAB HVAC CONTROL HEAD
P063	3	3	12092399	GRAY, DELPHI 800 SERIES, UNSEALED	LH BEHIND DRIVER AT SLPR CAB JOINT
P064	3	3	12092400	BLACK, DELPHI 800 SERIES, UNSEALED	LH BEHIND DRIVER AT SLPR CAB JOINT
P065	30	3	15304908	BLACK, PACKARD, GT SERIES, UNSEALED	LH BEHIND DRIVER AT SLPR CAB JOINT
P070	2	3	P20-1037	BLACK, METRI-PACK 150 SERIES, UNSEALED	LH TOP OF DASH BOARD NEAR WINDSHIELD
P103	62	3	P20-1314-31230	GRAY, AMP, MCP SERIES, SEALED	LH FIREWALL, ENGINE SIDE
P109	2	3	K333-550-202	BLACK, PACKARD, METRI-PACK 280 SERIES, SEALED	AT AC COMPRESSOR ENGINE
P121	21	3	P20-1314-11210	NATURAL, AMP MCP SERIES, SEALED	FIREWALL, AT CAB PDC ENGINE SIDE
P125	3	3	P20-1288	BLACK, DELPHI 150 SERIES SEALED	AT AC COMPRESSOR DISC LINE
P381	46	4	P20-1301-001	BLACK, A-POLE mPDC (ALCOA)	AT PDC IN LH SLEEPER TOOL BOX
P383	30	4	P20-1355-230	BLACK, PACKARD, GT SERIES, UNSEALED	BEHIND SLEEPER CONTROL PANEL
P384	4	4	K333-434	BLACK, PACKARD, METRI-PACK 630 SERIES, UNSEALED	BEHIND SLEEPER CONTROL PANEL
P396	2	4	P20-1214	GRAY, PACKARD, METRI-PACK 150.2, SEALED	RH UNDER BUNK IN HVAC DUCT
P398	2	4	K333-587-202	BLACK, PACKARD, METRI-PACK 480 SERIES, UNSEALED	RH UNDER BUNK IN HVAC UNIT
P399	5	4	54200517	BLACK, FRAMATON, APEX 280 SERIES, UNSEALED	RH UNDER BUNK IN HVAC UNIT
P403	10	4	12064993	BLACK PACKARD MICRO-PACK 100 HEADER 6-WAY	RH UNDER BUNK IN HVAC UNIT
P501	8	4	16-05702	BLACK, PACKARD, METRI-PACK 280 SERIES, UNSEALED	BEHIND SLEEPER CONTROL PANEL
P502	16	4	P20-6052	BLACK, AMP, .040 SERIES, UNSEALED	BEHIND SLEEPER CONTROL PANEL
P503	2	4	16-07121-005	BLACK, AMP, .100 MODU HEADER SERIES, UNSEALED	BEHIND SLEEPER CONTROL PANEL
T001	1	3	K333-46-22	RING TERMINAL (1/4")	FIREWALL GND, CAB SIDE
T002	1	3	K333-46-14	RING TERMINAL (1/4")	FIREWALL GND, CAB SIDE
T101	1	3	K333-46-19	RING, TERMINAL, (5/16")	ENGINE GROUND

GENERAL NOTES:

- USE ON NGP CHASSIS WITH NAMUX IV INSTRUMENTATION AND WITH 2010 AND 2013 EMISSIONS COMPLIANT ENGINES.
- HOW TO USE THIS DIAGRAM:  
-EACH CONNECTOR HAS A DISTINCT ALPHANUMERIC "REFERENCE DESIGNATOR" OR "REF\_DES" PRINTED NEXT TO IT. USE THE REF\_DES TO FIND CONNECTOR INFORMATION IN THE CONNECTOR INFORMATION TABLE. A REF\_DES IS FOR REFERENCE ONLY AND DOES NOT NECESSARILY MATCH ANY REF\_DES ON THE CORRESPONDING HARNESS DRAWINGS.  
-CONNECTOR MATING VIEWS SHOWN FOR CONNECTORS WITH 2 OR MORE TERMINALS.
- CIRCUITS ENCOMPASSED BY THE FOLLOWING SYMBOL SHALL BE TWISTED. IF 2 CIRCUITS ARE ENCOMPASSED THEN THEY SHALL FORM A TWISTED PAIR. IF 3 CIRCUITS ARE ENCOMPASSED THEN THEY SHALL FORM A TWISTED TRIPLE, ETC.:



- WIRE SIZE IN DIAGRAM IS SPECIFIED IN METRIC UNITS PER SAE STANDARDS J1127 & J1128. TABLE 1 PROVIDED FOR CROSS REFERENCE TO AMERICAN WIRE GAUGE (AWG) UNITS.

METRIC (mm <sup>2</sup> )	STANDARD (AWG)	METRIC (mm <sup>2</sup> )	STANDARD (AWG)
0.35	22	5.0	10
0.5	20	8.0	8
0.8	18	13.0	6
1.0	16	19.0	4
2.0	14	32.0	2
3.0	12	40.0	1

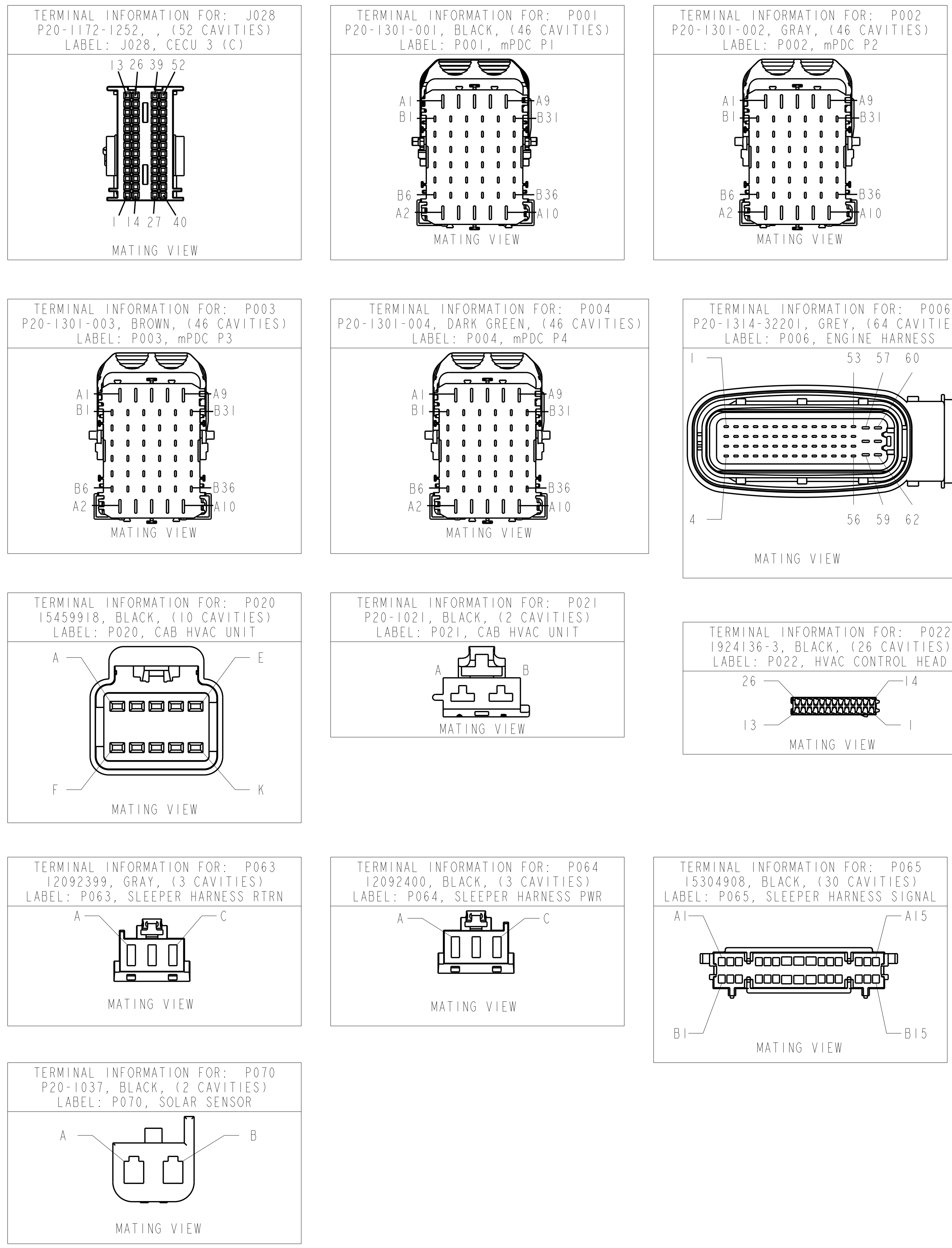
5 SPLICE CONTAINS MORE CIRCUITS THAN SHOWN.

6 CONNECTORS P063, P064, & J382 MATE AS FOLLOWS:

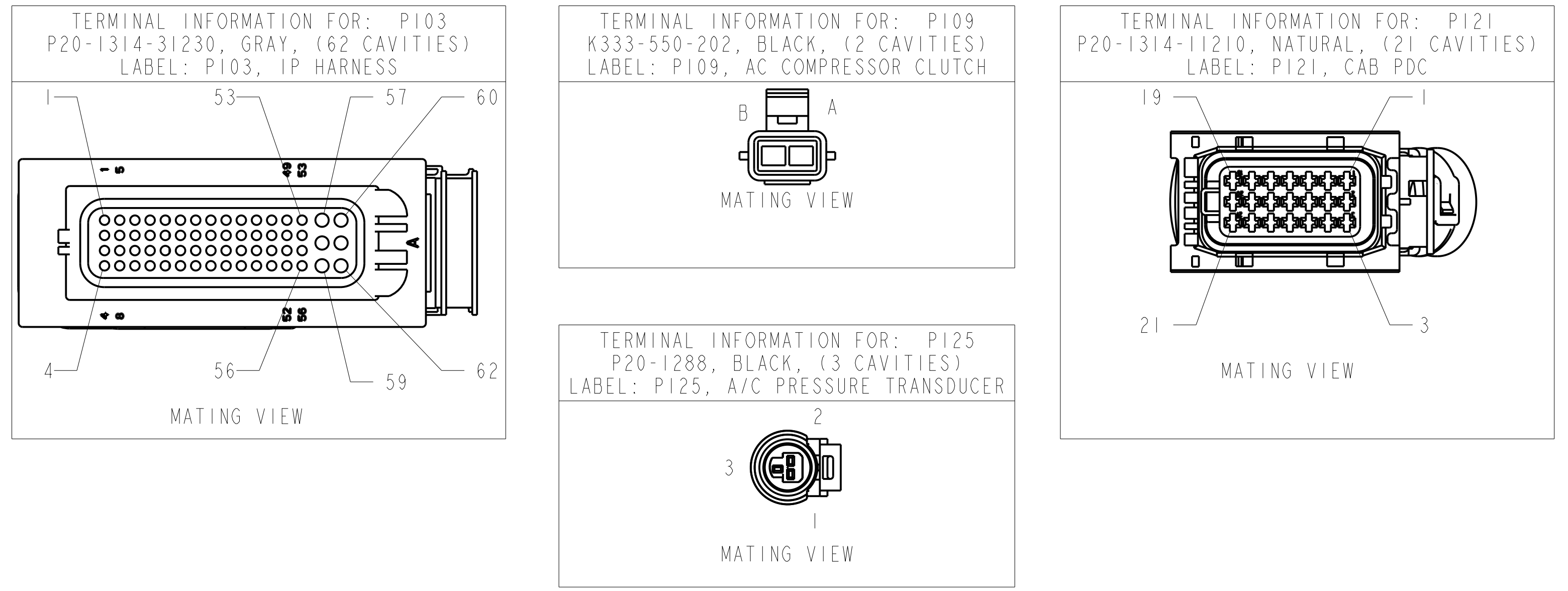
P063	C	A	J382
	B	B	
A	C		
P064	C	D	
	B	E	
	A	F	

QTY	ITEM	PART NUMBER	PRODUCT DESCRIPTION	MATERIAL
<p>1. THIS DRAWING AND THE INFORMATION CONTAINED HEREIN ARE PROPRIETARY TO PACCAR, INC. UNLESS OTHERWISE NOTED AND SHALL NOT BE REPRODUCED, COPIED OR DISCLOSED IN WHOLE OR IN PART, OR USED FOR MANUFACTURE OR FOR OTHER PURPOSE WITHOUT THE WRITTEN PERMISSION OF PACCAR, INC.</p> <p>2. DIMENSIONING AND TOLERANCING PER PACCAR CS0108.</p> <p>3. SHOW ALL DIMS. BREAK SHARP EDGES.</p> <p>4. PART IDENTIFICATION AND TRACEABILITY REQUIREMENTS TO COMPLY WITH PACCAR SP0038.</p> <p>5. THIS DRAWING/SPECIFICATION USES SYMBOLS TO CLASSIFY CHARACTERISTICS. THESE SYMBOLS ARE DEFINED IN THE PACCAR SUPPLIER QUALITY STANDARD.</p> <p>6. EMISSION-RELATED PART CODES - SEE PACCAR EP00374 FOR REQUIREMENTS.</p>				
			<p>TOLERANCES UNLESS OTHERWISE SPECIFIED ANGLE: ± 1° (XX) = ± 1° (X.X) = ± 0.5</p> <p>THIRD ANGLE PROJECTION</p> <p>DO NOT SCALE DRAWING</p> <p>SCALE: NONE DRAWING VERSION: D.12</p>	<p>DRIVING</p> <p>P94-1935</p> <p>REV D</p>
			<p>TITLE: DIAG-HVAC (SLPR AND CAB)</p>	<p>SCALE: NONE DRAWING VERSION: D.12 SHEET 1 OF 5</p>

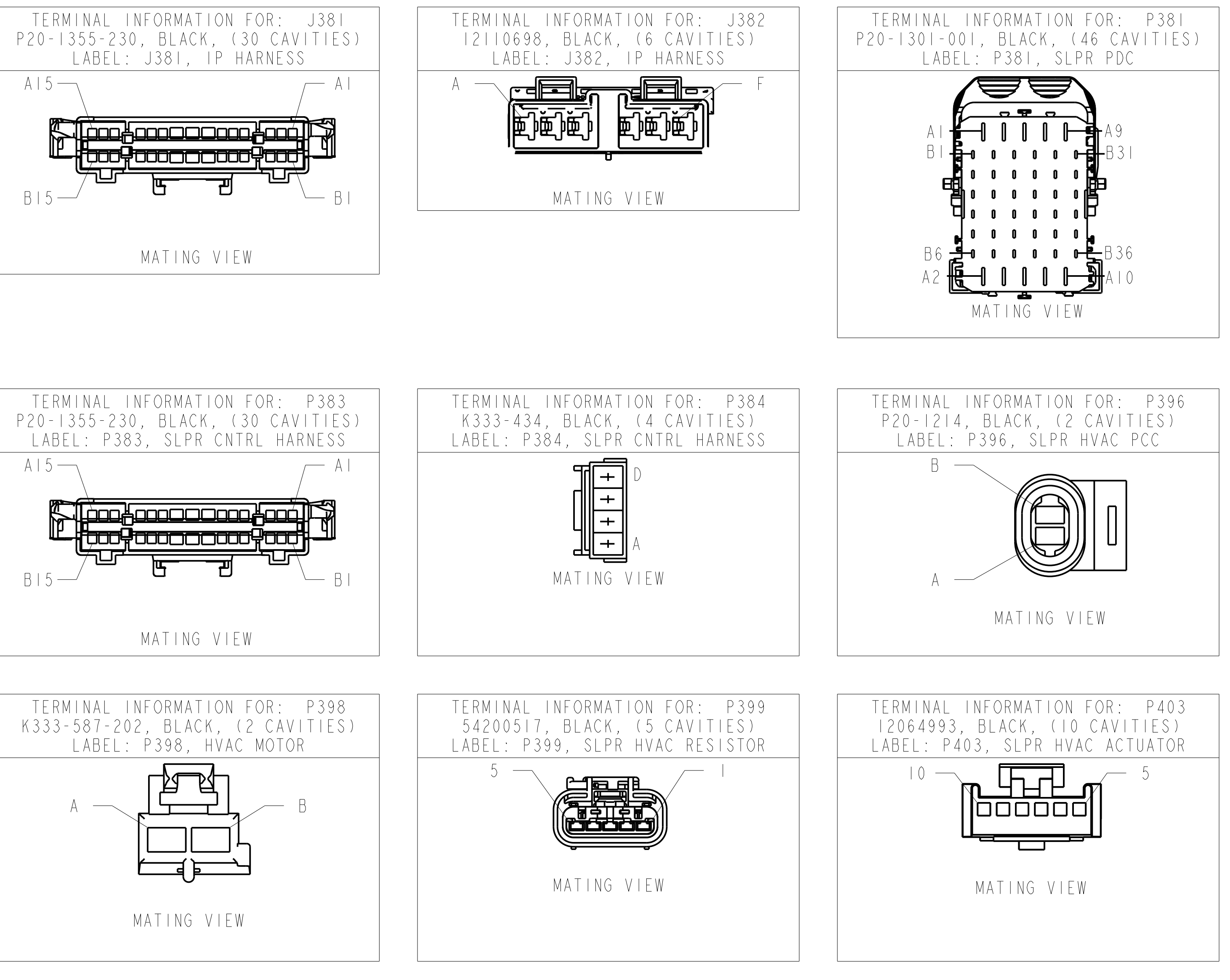
# INSTRUMENT PANEL HARNESS



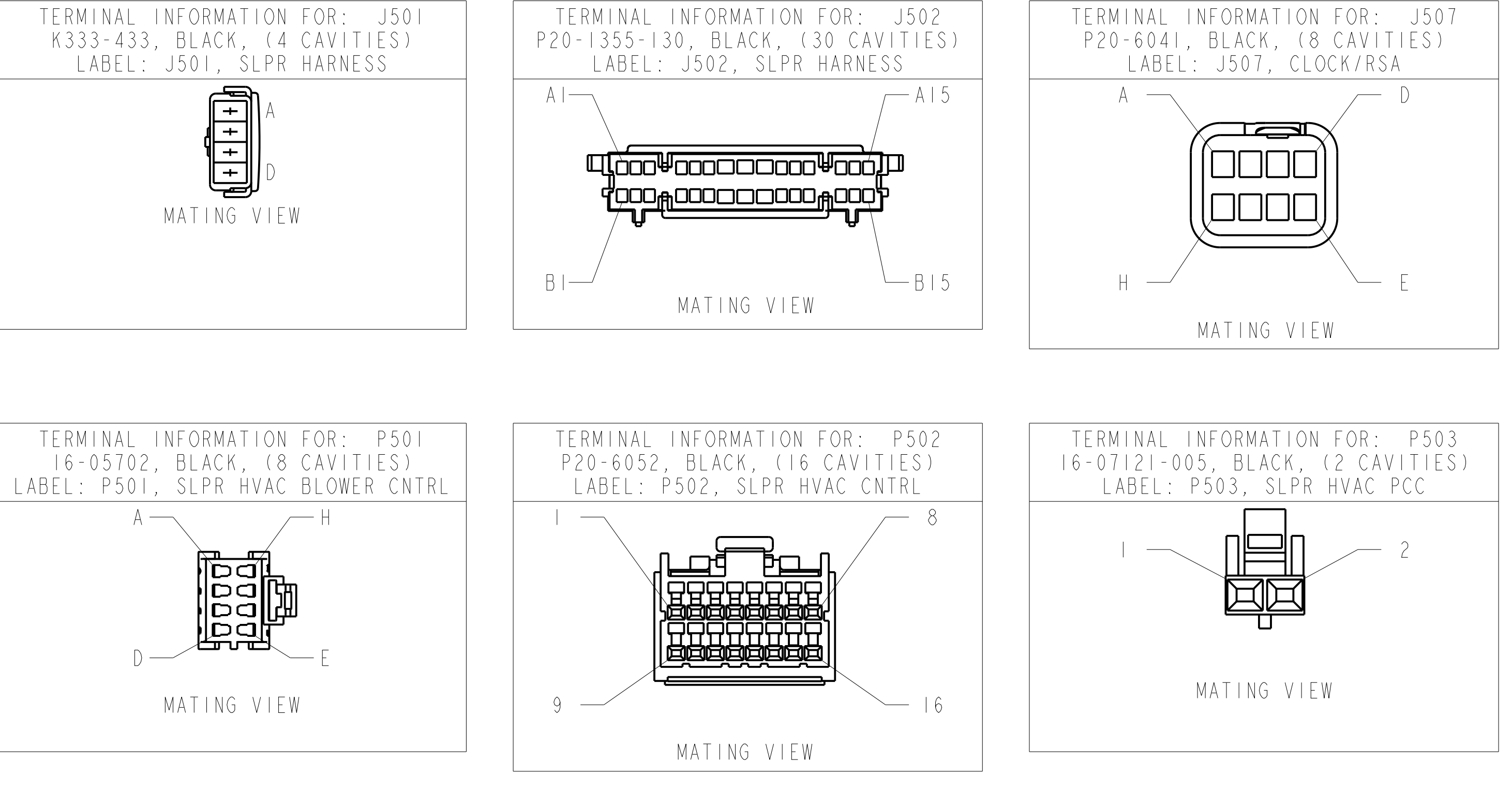
# ENGINE HARNESS



# SLEEPER HARNESS

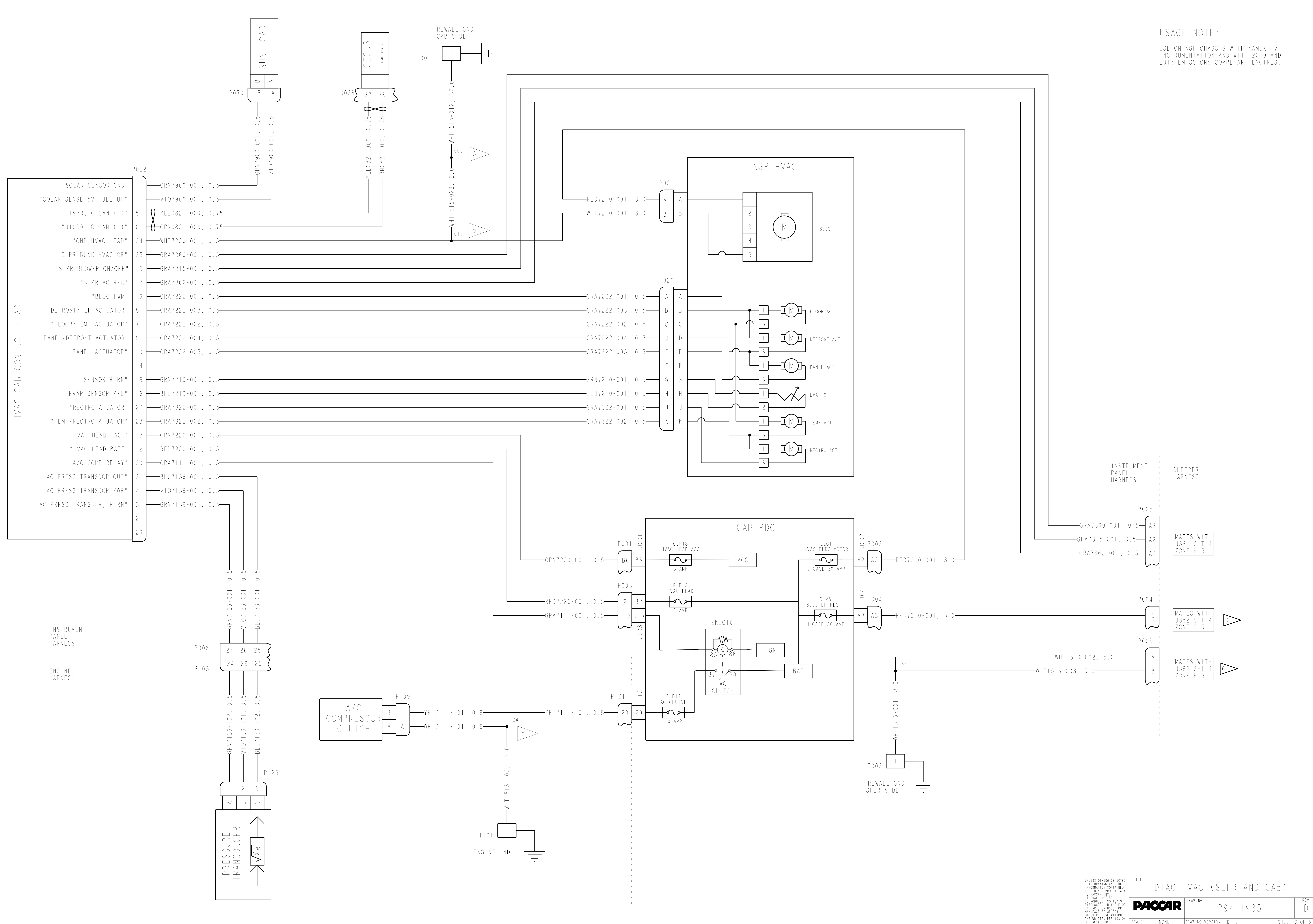


# SLEEPER CONTROL PANEL HARNESS

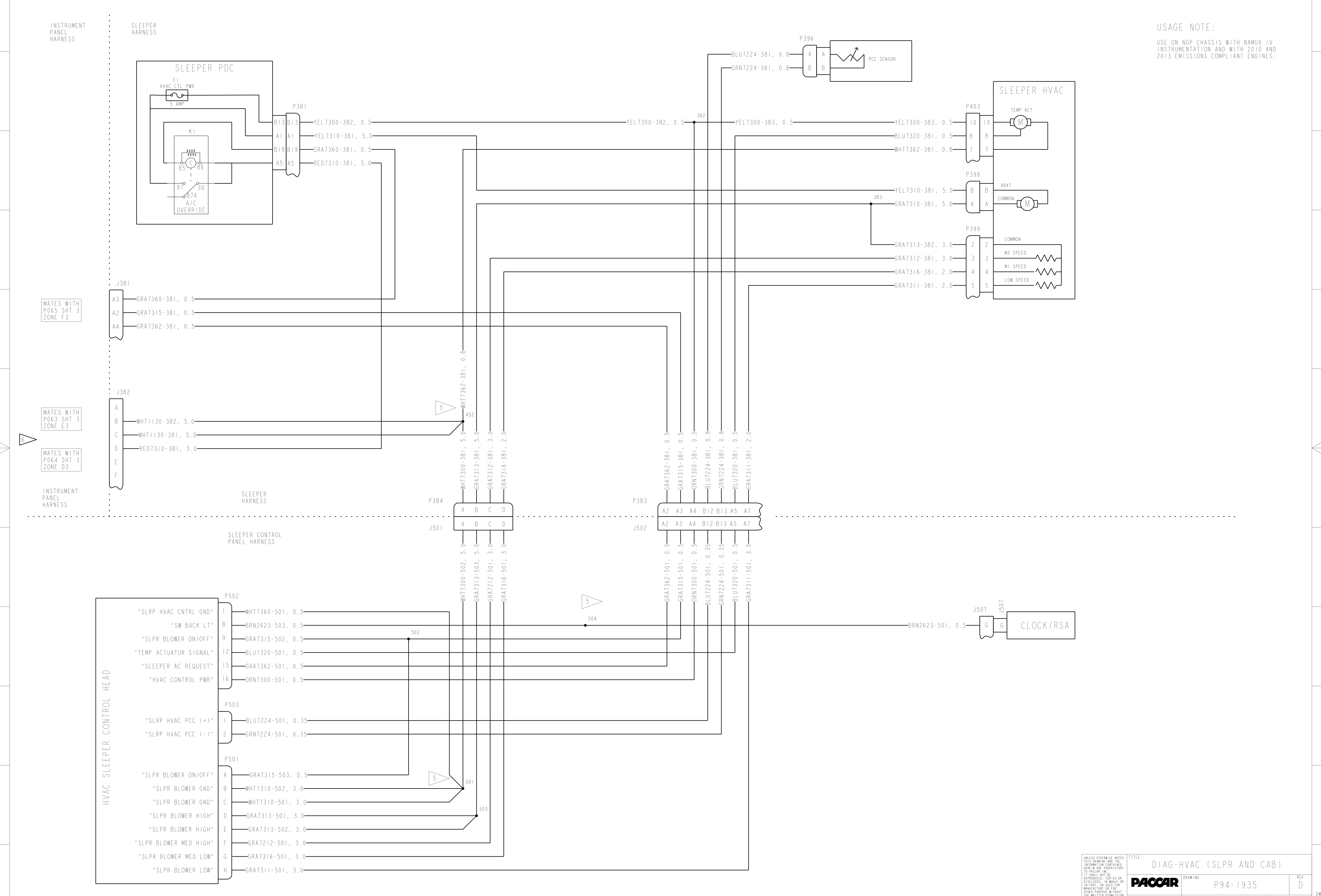


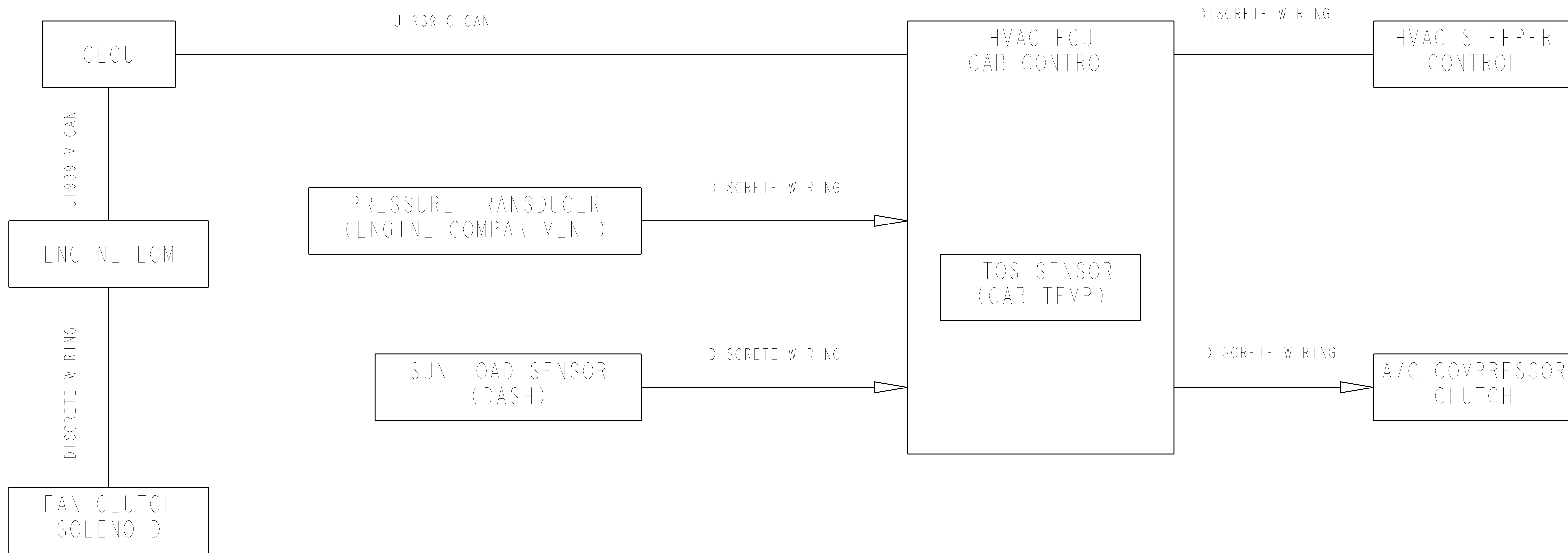
USAGE NOTE:  
USE ON NGP CHASSIS WITH NAMUX IV  
INSTRUMENTATION AND WITH 2010 AND  
2013 EMISSIONS COMPLIANT ENGINES.

USAGE NOTE:  
USE ON NGP CHASSIS WITH NAMUX IV INSTRUMENTATION AND WITH 2010 AND 2013 EMISSIONS COMPLIANT ENGINES.



USAGE NOTE:  
USE ON NGP CHASSIS WITH NAMUX IV INSTRUMENTATION AND WITH 2010 AND 2013 EMISSIONS COMPLIANT ENGINES.





HVAC FUNCTIONALITY					
FUNCTION	INPUT / J1939 MSG	CARRIER	CTRL/GATEWAY	CARRIER	RECEIVING UNIT /OUTPUT FUNCTION
AUTOMATIC TEMPERATURE CONTROL	ENG ECM / ENGINE SPEED MSG	J1939 V-CAN	CECU	J1939 C-CAN	HVAC ECU / AUT TEMP CTRL
	ENG ECM / ENGINE COOLANT TEMP MSG	J1939 V-CAN	CECU	J1939 C-CAN	
	ENGINE ECM / VEHICLE SPEED MSG	J1939 V-CAN	CECU	J1939 C-CAN	
	ENGINE ECM / OUTSIDE AIR TEMP MSG	J1939 V-CAN	CECU	J1939 C-CAN	
	ITOS SENSOR	INTERNAL	HVAC ECU	INTERNAL	
SUN LOAD SENSOR	DISCRETE WIRE	HVAC ECU	INTERNAL		
ENGINE FAN ON REQUEST	HVAC ECU / REQUEST FAN SPEED MSG	J1939 C-CAN	CECU	J1939 V-CAN	ENGINE ECM / ENGINE FAN ON
ILLUMINATION	DIMMER SWITCH	DISCRETE WIRE	CECU	J1939 C-CAN	HVAC ECU / CONTROL HEAD ILLUMINATION
REFRIGERANT PRESSURE	PRESSURE TRANSDUCER	DISCRETE WIRE	HVAC ECU	INTERNAL	HVAC ECU / REFRIGERANT PRESSURE
SLEEPER A/C REQUEST	SLEEPER HVAC CONTROL HEAD	DISCRETE WIRE	HVAC ECU	DISCRETE WIRE	A/C CLUTCH RELAY / A/C COMPRESOR ON
SLEEPER BLOWER ON/OFF STATUS	SLEEPER HVAC CONTROL HEAD	DISCRETE WIRE	HVAC ECU	DISCRETE WIRE	HVAC ECU
SLEEPER BUNK OVERRIDE	HVAC CAB CONTROL PUSH BUTTON	INTERNAL	HVAC ECU	DISCRETE WIRE	BUNK OVERRIDE RELAY / ENABLE SLEEPER BLOWER MOTOR
ACRONYMS :					
C-CAN = CAB CONTROLLER AREA NETWORK					
V-CAN = VEHICLE CONTROLLER AREA NETWORK					