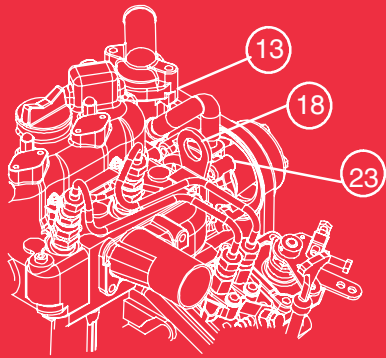




Auxiliary Power Unit



SERVICE PARTS LIST

for

ComfortPro™ Auxiliary Power Unit

Models PC6000, PC6002, PC6003 & PC6006

TABLE OF CONTENTS

APU

Mounting/Enclosure	1
Engine Mount/Engine	2

FUEL SYSTEM

Injector/Fuel Filter/Fuel Pump/Fuel Solenoid	3
--	---

COOLANT SYSTEM

Water Pump/Thermostat	4
Radiator	5

OIL/LUBRICATION SYSTEM

6

EXHAUST SYSTEM

7

AIR FILTER SYSTEM

8

GENERATOR

9, 10

ELECTRICAL SYSTEM

Alternator/Starter Motor/Glow Plugs	11
APU	12
Driver Control Panel	13
120 VAC Receptacle	14

AIR CONDITIONING SYSTEM

Internal Components	15
CCU Controller	16
Condenser	17
Outer Casing/Vent Ducts	18

ACCESSORIES

Frame Mounting Brackets	19
Battery Cables	19
Buzzer Kit/APU Control Cable Converter	20
Fuel Pickup Kit	21
Engine Fittings	22
Cable Ties/Loom	23
Documentation	24

TEST EQUIPMENT & SPECIAL TOOLS

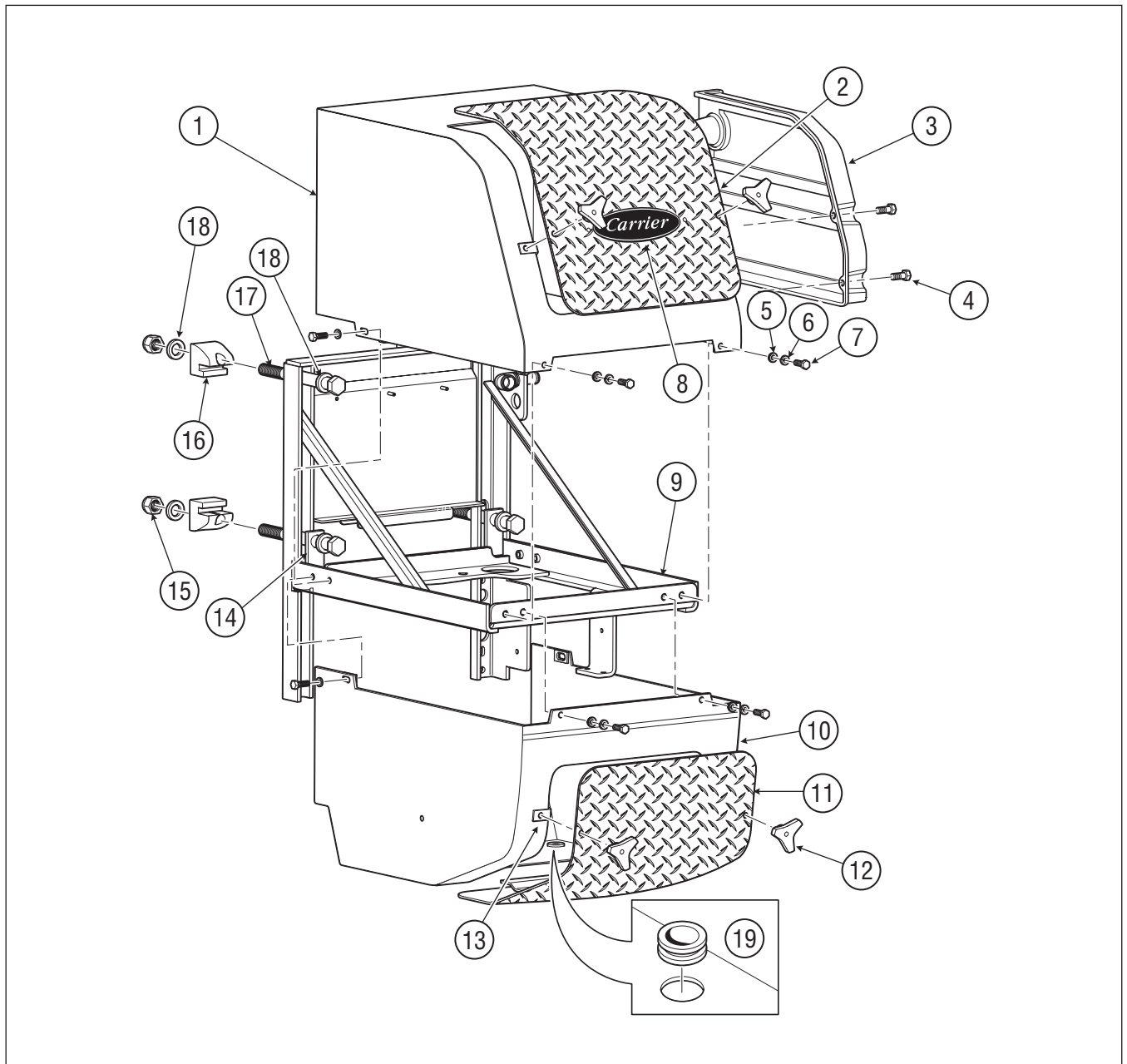
25

OPTIONS

26

NUMERIC PARTS INDEX

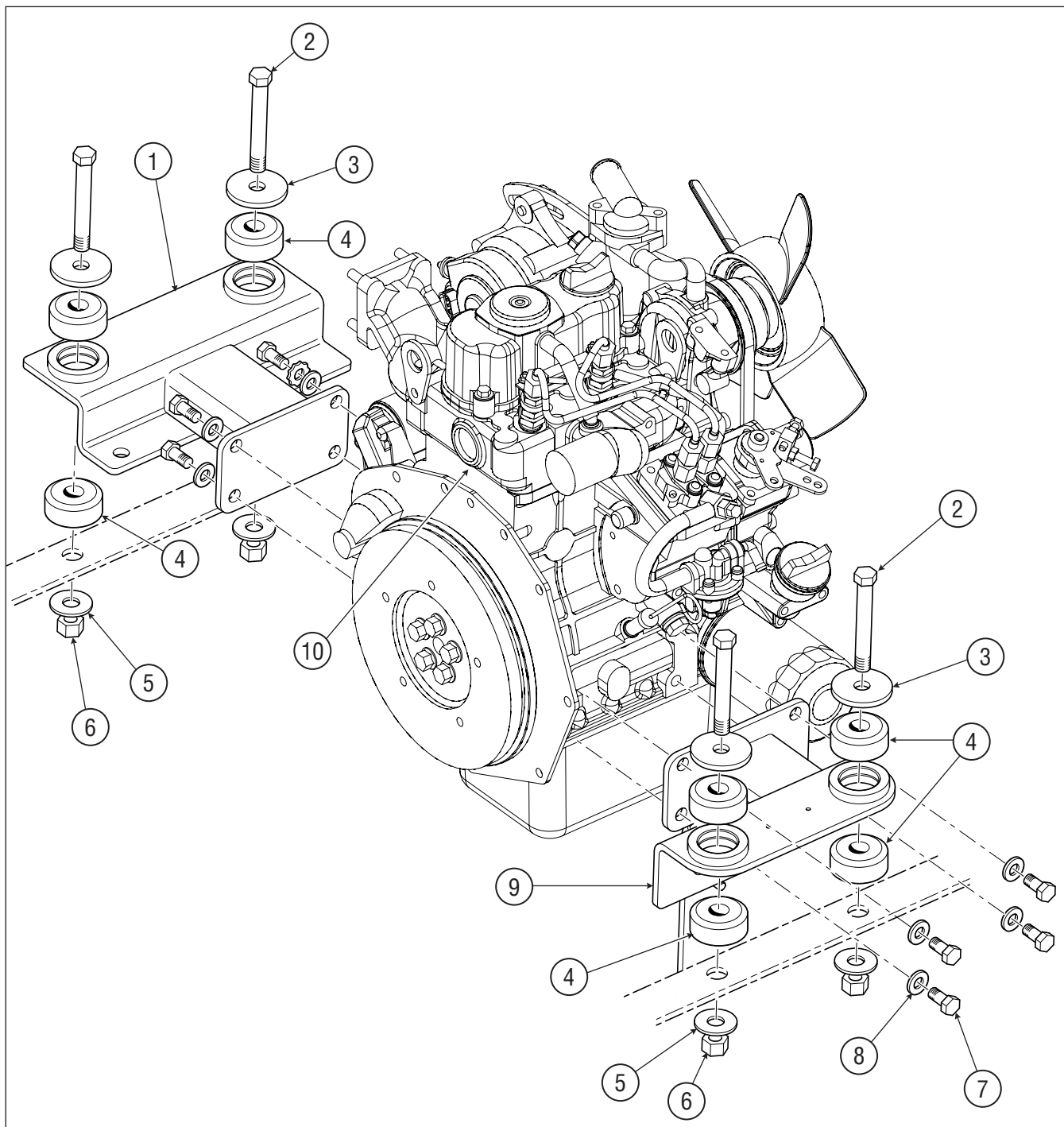
27, 28



ITEM	PART#	DESCRIPTION	REQ.
1	30-705-10K	Enclosure, Upper, Complete	1
2	30-715-01K	Access Cover, Upper	1
3	30-845-15K	Air Intake Cover, Rear Inlet	1
4	25-455-50K	HWHCS 5/16-18 X 1 SS, 10/Pkg.	4
5	25-016-50K	Washer, 5/16" Flat, SS, 10/Pkg.	8
6	25-019-50K	Washer, 5/16" Lock, SS, 10/Pkg.	8
7	25-023-50K	Bolt, Hex Head, 5/16" SS, 10/Pkg.	8
8	30-577-21K	Carrier Logo c/w Fasteners	1
9	30-700-30K	Frame, APU	1
10	30-710-00K	Enclosure, Lower, Complete	1
11	30-716-01K	Access Cover, Lower	1

ITEM	PART#	DESCRIPTION	REQ.
12	25-461-01K	Handwheel, 3 Lobe	4
13	25-456-01K	Nut, 5/16" NC Panel, 10/Pkg.	4
14	30-761-05K	Washer, Frame	2
15	25-066-01K	Nut, 3/4" NC Nyloc, 10/Pkg.	4
16	30-793-01K	Gripper, Frame	4
17	25-069-01K	Bolt, Hex Head, 3/4" NC x 7-1/2", 10/Pkg.	4
18	25-307-01K	Washer, 3/4" x 1-1/2" OD, 10/Pkg.	8
19	25-464-01K	Grommet, 1/2" x 3/4", 10/Pkg.	1
	30-793-00K	APU Mounting Kit Includes items 14 to 18	1

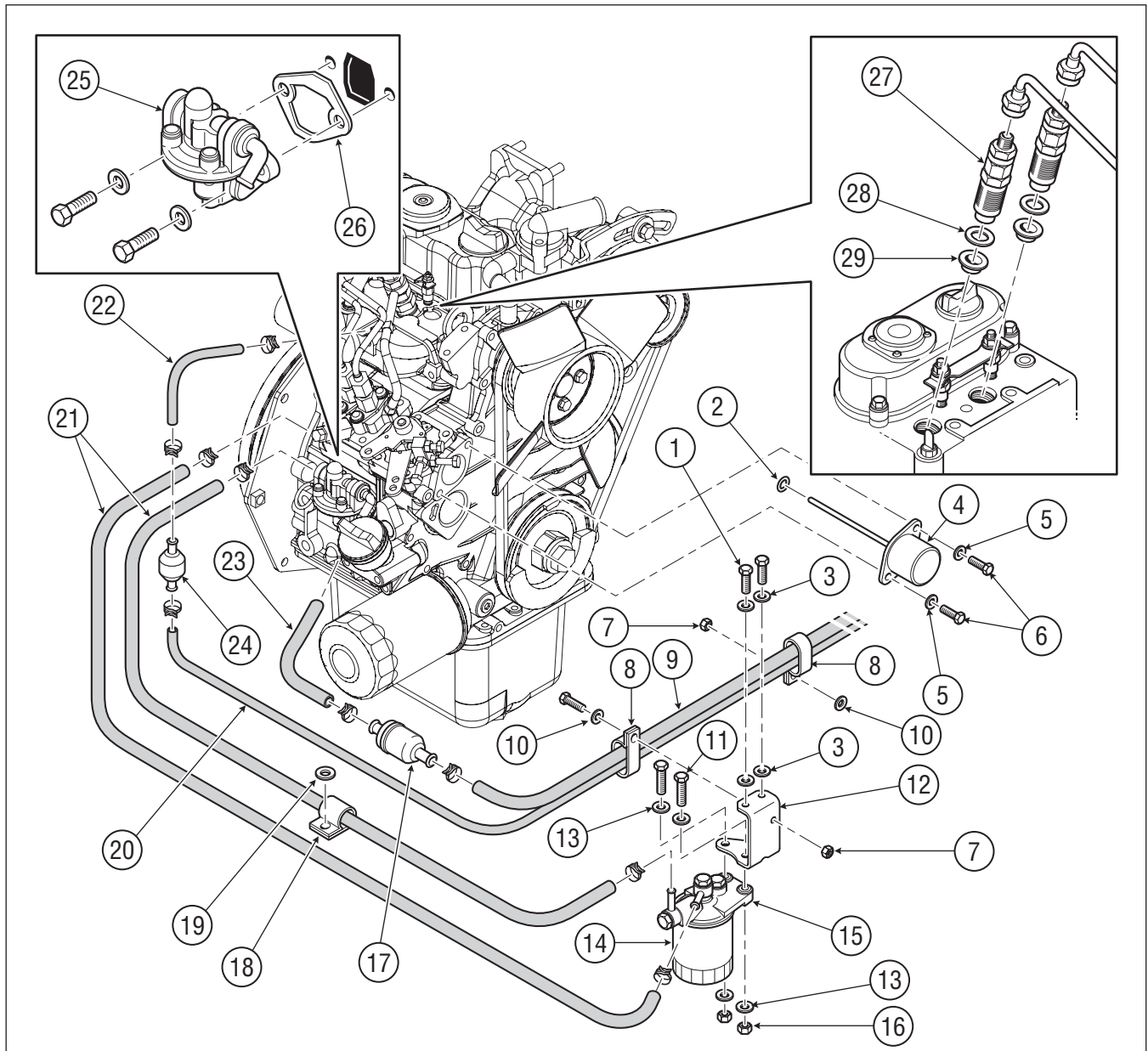
APU ENGINE MOUNT/ENGINE



ITEM	PART#	DESCRIPTION	REQ.
1	30-708-01K	Mount Engine, Rear	1
2	25-451-02K	Bolt, Hex Head, 1/2" NC x 3-1/2", 10/Pkg.	4
3	25-303-02K	Washer, 1/2" Shock Mount, 10/Pkg.	4
4	30-718-01K	Shock Mount, 2 Piece (set)	4
5	25-052-01K	Washer, 1/2" Flat, 10/Pkg.	4
6	25-053-01K	Nut, 1/2" NC Nyloc, 10/Pkg.	4

ITEM	PART#	DESCRIPTION	REQ.
7	25-449-02K	Bolt, M10 x 1.25mm x 25mm, 10/Pkg.	8
8	25-450-01K	Washer, M10 Flat, 10/Pkg.	8
9	30-707-01K	Mount Engine, Front	1
10	96-101-20K	Engine, ComfortPro	1
	30-718-00K	ENGINE SHOCK MOUNT KIT Includes items 2 to 6	4

FUEL SYSTEM INJECTOR/FUEL FILTER/PUMP/SOLENOID

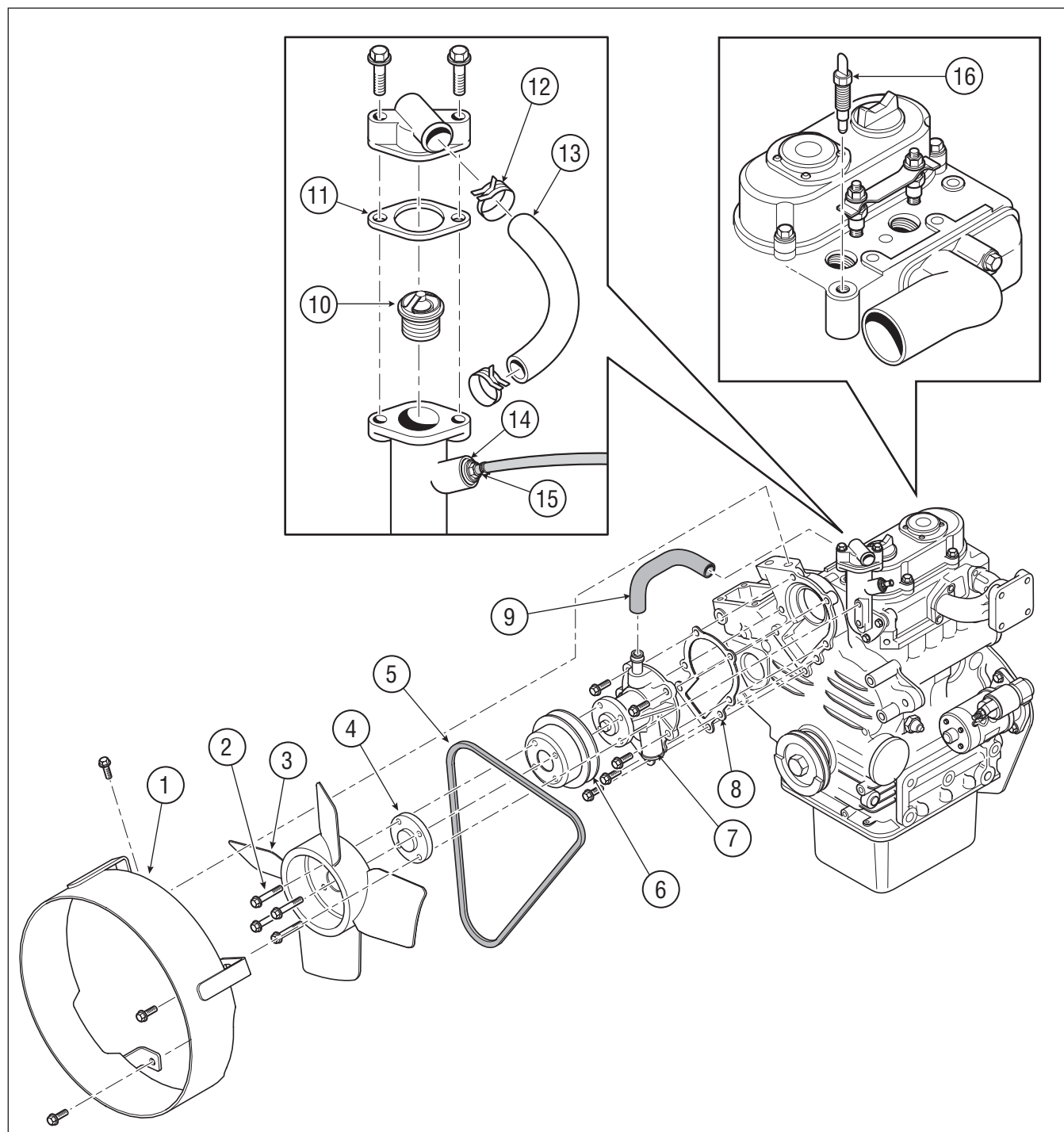


ITEM	PART#	DESCRIPTION	REQ.
1	25-023-50K	Bolt, Hex Head, 5/16" SS, 10/Pkg.	2
2	96-153-02K	O-Ring, Solenoid	1
3	25-016-50K	Washer, 5/16" Flat, SS, 10/Pkg.	4
4	96-153-01K	Solenoid, Fuel, Shut-Off	1
5	96-153-04K	Washer, Lock	2
6	96-153-03K	Bolt, HHSC	2
7	25-015-50K	Nut, 1/4-20 Nyloc SS	2
8	27-097-21K	Clamp, P .625 Double	2
9	30-937-04K	Hose, Fuel Inlet c/w Clamps	1
10	25-155-50K	Washer, 1/4 x 5/8 Flat SS, 10/Pkg.	2
11	25-032-01K	HHCS, 3/8NC x 1-1/2 ZP GR5	2
12	30-914-01K	Bracket, Fuel Filter	1
13	25-017-01K	Washer, 3/8" Flat, 10/Pkg.	4
14	96-101-24K	Filter, Fuel	1
15	96-950-21K	Fuel Filter Head Assembly	1
16	25-040-01K	Nut, 3/8NC Nyloc	2

ITEM	PART#	DESCRIPTION	REQ.
17	30-186-02K	Filter, Fuel, In-line, 6/Pkg.	1
18	30-940-01K	Clamp, P .50" x .531 Hole, 10/Pkg.	1
19	25-052-01K	Washer, 1/2" Flat, 10/Pkg.	1
20	30-937-01K	Hose, Fuel Return c/w Clamps	1
21	30-937-03K	Hose, Fuel 5/16 c/w Loom & Clamps	1
22	30-937-06K	Hose, Fuel, Return to Check Valve c/w Clamps	1
23	30-937-05K	Hose, Fuel, In-line Filter to Pump c/w Clamps	1
24	96-101-25K	Valve, Check, Fuel	1
25	30-377-01K	Fuel Pump, Suction	1
26	30-378-02K	Gasket, Fuel Pump	1
27	96-943-00K	Injector c/w Gasket & Heat Seal	2
28	96-943-01K	Gasket, Injector, 1/Pkg.	2
29	96-943-02K	Heat Seal, Injector, 1/Pkg.	2

COOLANT SYSTEM

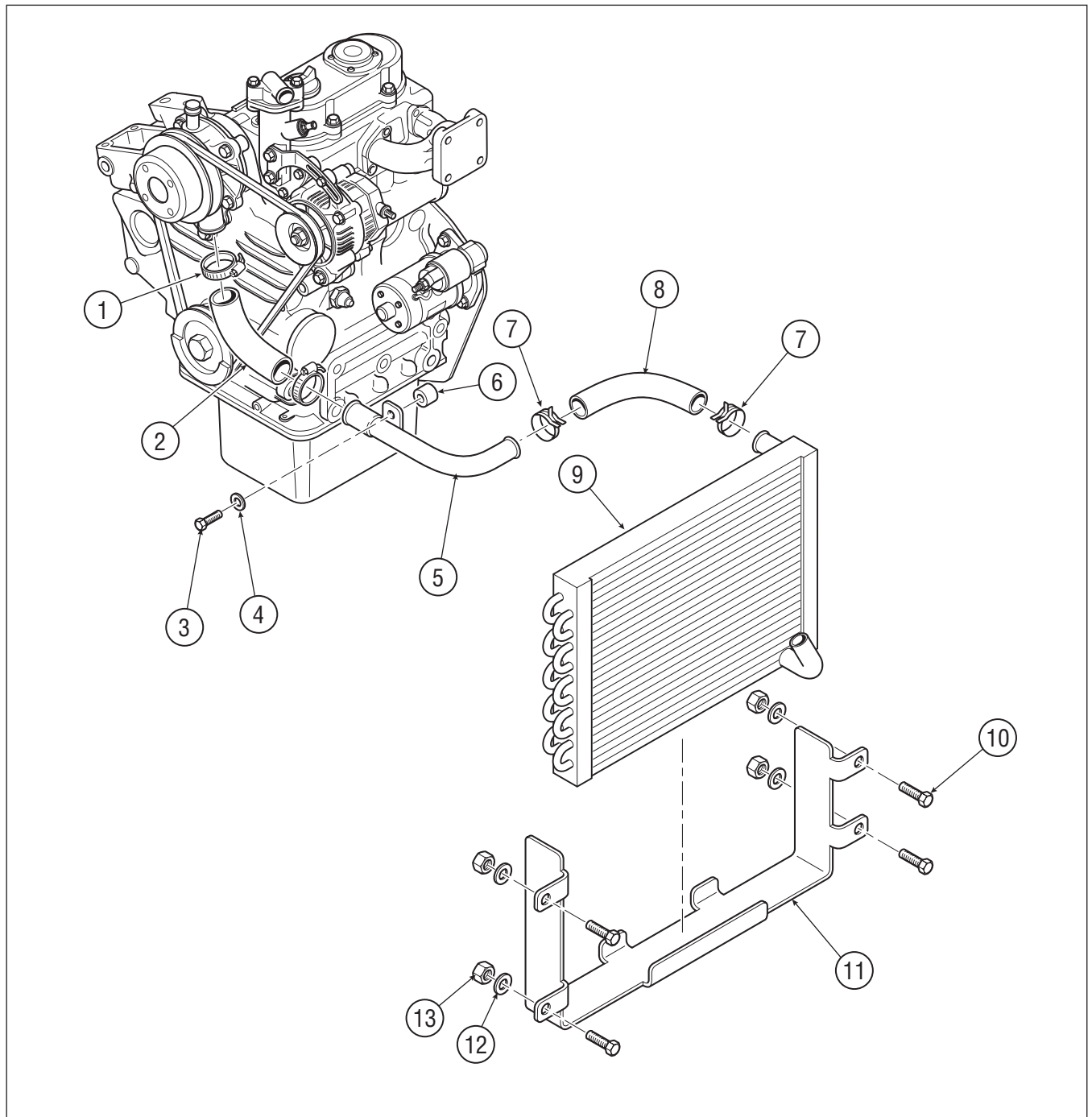
WATER PUMP/THERMOSTAT



ITEM	PART#	DESCRIPTION	REQ.
1	30-954-41K	Fan Shroud	1
2	96-555-01K	Bolt, Hex Head, M6 x 1mm x 10mm, 10/Pkg.	4
3	30-230-01K	Fan, Engine Cooling	1
4	96-969-05K	Spacer, Fan	1
5	96-969-03K	Belt, Alternator/Fan/Water Pump	1
6	96-969-04K	Pulley, Fan	1
7	30-123-01K	Water Pump	1
8	30-124-01K	Gasket, Water Pump	1

ITEM	PART#	DESCRIPTION	REQ.
9	96-967-00K	Pipe, Water Return	1
10	30-228-01K	Thermostat, Engine	1
11	30-229-01K	Gasket, Thermostat	1
12	27-085-01K	Clamp, 1-3/8" Dia., Spring, 10/Pkg.	2
13	27-082-05K	Hose, 1" ID x 3/4 ft.	3/4 ft.
14	30-017-03K	Valve, Bleeder, Complete	1
15	27-005-01K	Clamp, 7/16"ID, Gear, 10/Pkg.	1
16	30-266-01K	Sensor, Coolant, Overheat	1

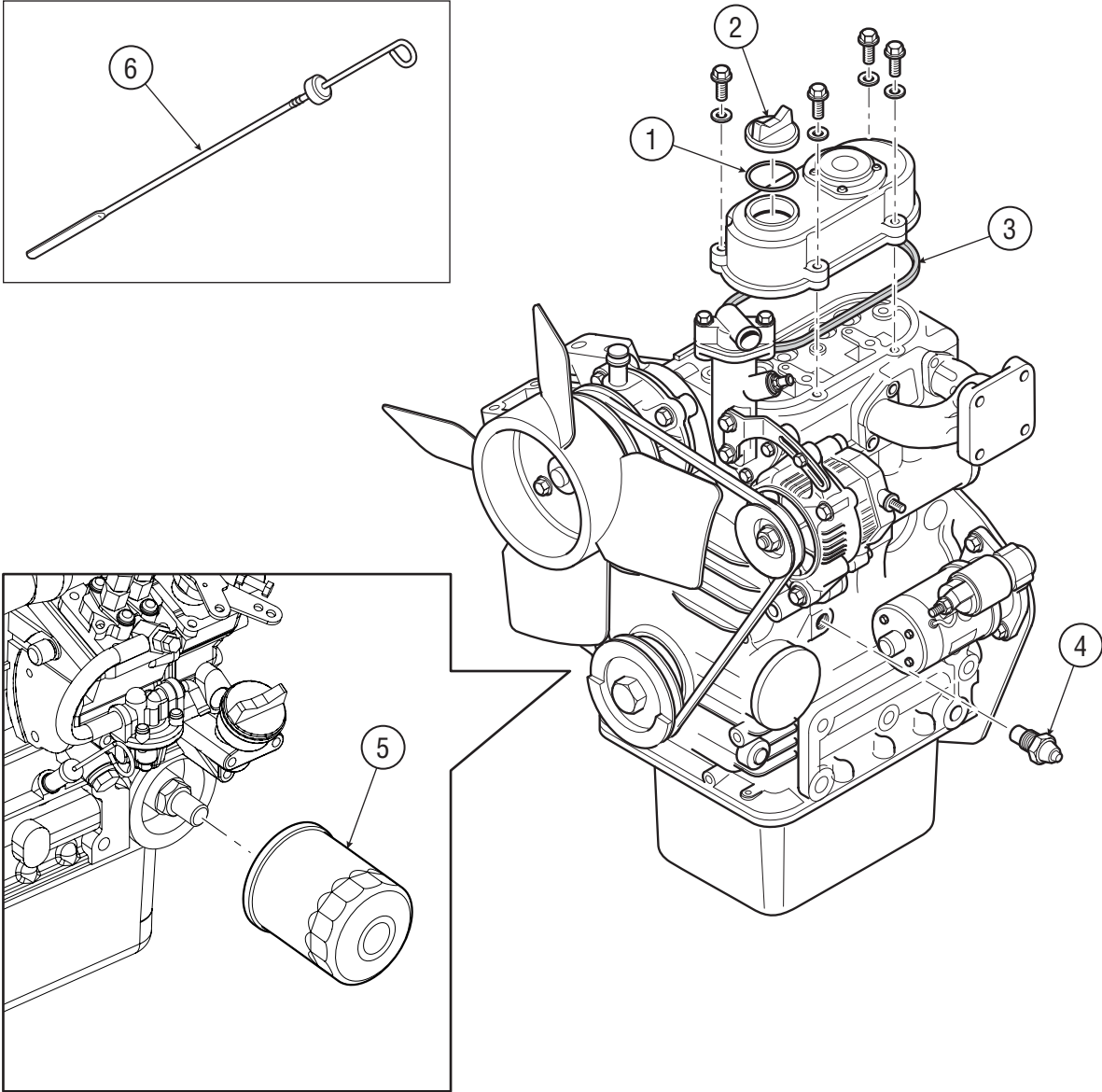
COOLANT SYSTEM RADIATOR



ITEM	PART#	DESCRIPTION	REQ.
1	96-050-01K	Clamp, 1-1/4" Dia., Screw, 10/Pkg.	2
2	96-051-01K	Hose, Water Pump Inlet	1
3	25-444-01K	Bolt, Hex Head, M6 x 1mm x 60mm, 10/Pkg.	1
4	25-092-01K	Washer, M6 Lock, 10/Pkg.	1
5	30-735-01K	Pipe, Coolant Inlet	1
6	30-865-01K	Spacer, M6 x 5mm	1
7	27-083-01K	Clamp, 1-1/16" Dia., Spring, 10/Pkg.	2

ITEM	PART#	DESCRIPTION	REQ.
8	27-015-02K	Hose, 3/4" ID, Silicone, 50 ft./Pkg.	1 ft.
9	30-717-50K	Radiator	1
10	25-023-50K	Bolt, Hex Head, 5/16" SS, 10/Pkg.	4
11	30-799-01K	Bracket, Radiator	1
12	25-016-50K	Washer, 5/16" Flat, SS, 10/Pkg.	4
13	25-021-01K	Nut, 5/16" Nyloc, 10/Pkg.	4

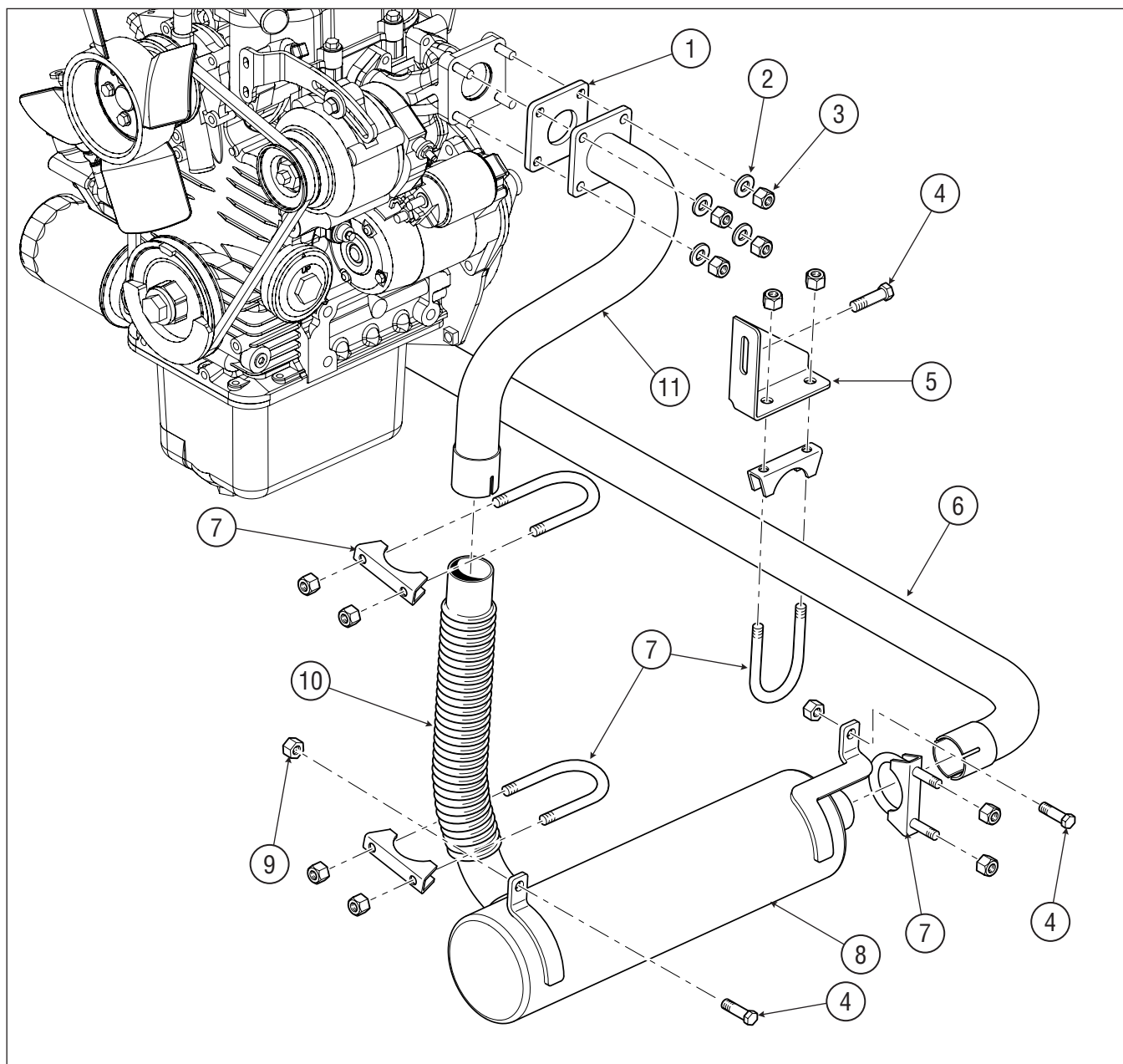
OIL/LUBRICATION SYSTEM



ITEM	PART#	DESCRIPTION	REQ.
1	96-952-06K	O-Ring, Oil Filler Plug 10/Pkg	1
2	96-952-05K	Plug, Oil Filler c/w O-Ring	1
3	96-101-04K	Gasket, Valve Cover T2	1
4	96-949-00K	Sensor, Oil Pressure	1
5	96-101-33K	Filter, Oil, 6/Pkg.	1
6	96-101-27K	Dipstick, Oil	1

ITEM	PART#	DESCRIPTION	REQ.
------	-------	-------------	------

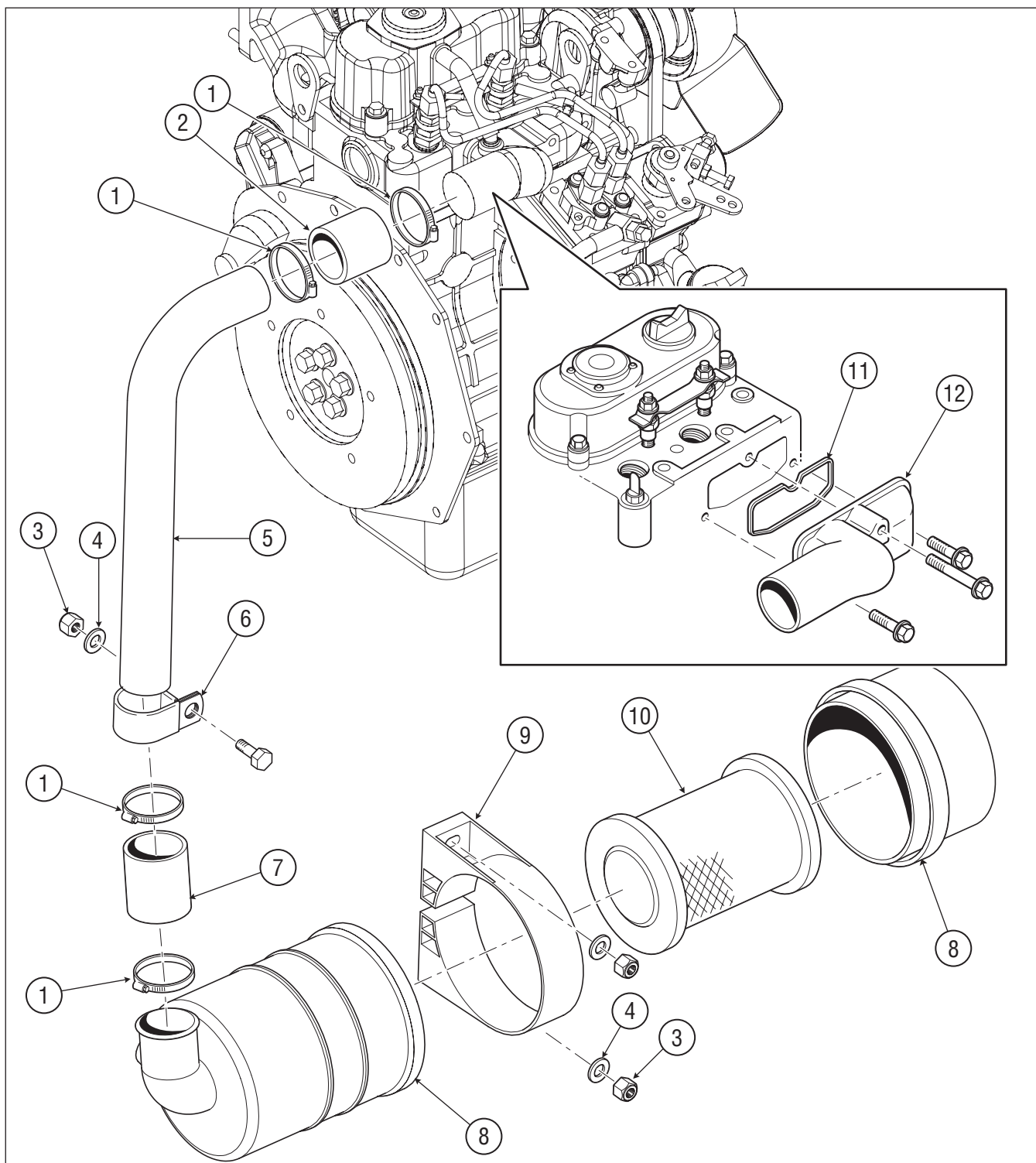
EXHAUST SYSTEM



ITEM	PART#	DESCRIPTION	REQ.
1	96-416-01K	Gasket, Exhaust Header Pipe	1
2	96-975-01K	Washer, M8 Flat, 10/Pkg.	4
3	96-974-01K	Nut, M8 x 1.25mm, 10/Pkg.	4
4	25-455-01K	Bolt, Hex Flange Head, 5/16" NC x 1", 10/Pkg.	3
5	30-760-01K	Bracket, Exhaust Pipe Support	1
6	30-725-03K	Exhaust Pipe, 90 Degree x 24"	1
7	27-018-01K	Clamp, Exhaust Pipe, 1-1/2"	4

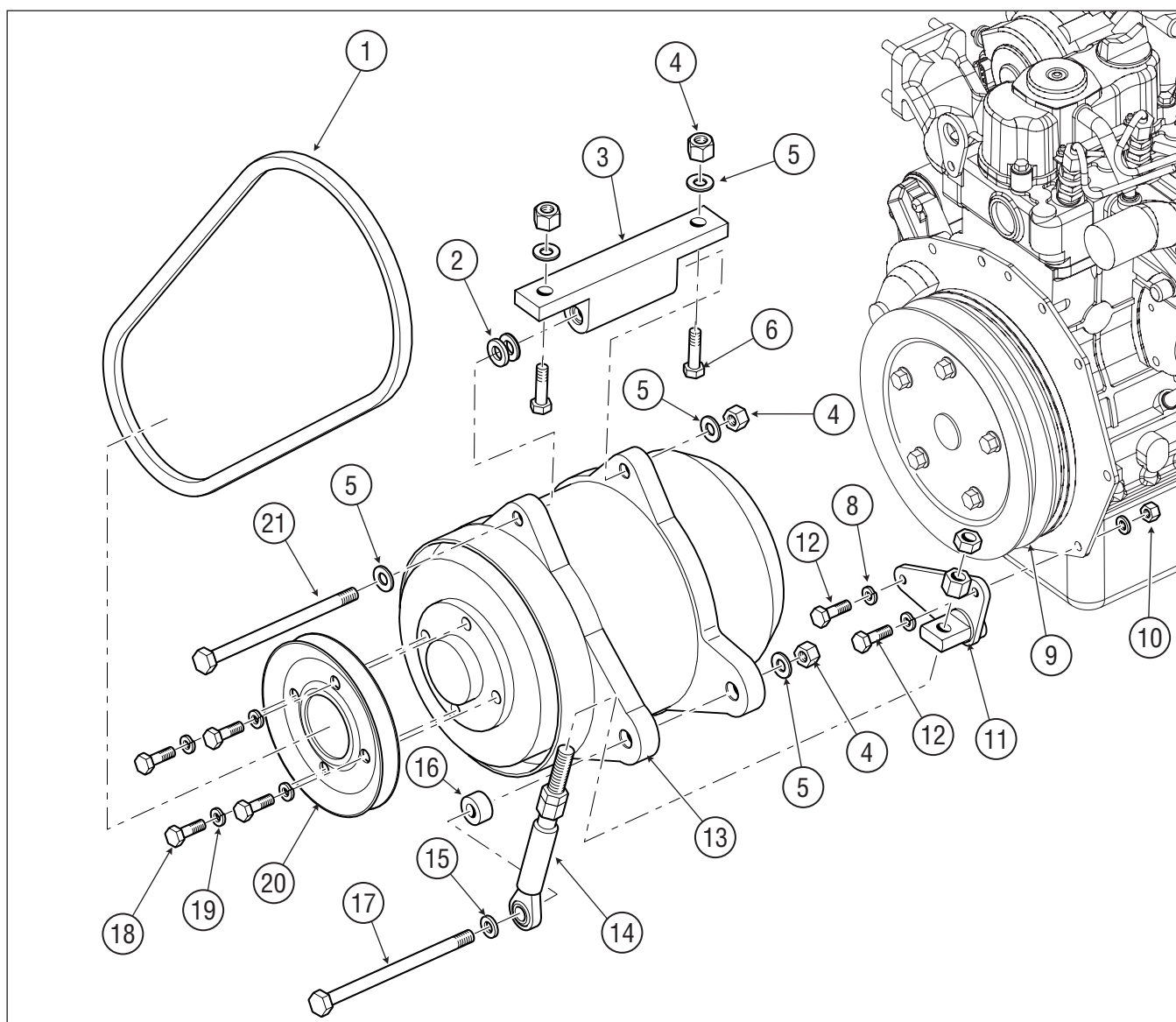
ITEM	PART#	DESCRIPTION	REQ.
8	30-723-01K	Muffler	1
9	25-021-01K	Nut, 5/16" Nyloc, 10/Pkg.	2
10	30-723-40K	Bellows Exhaust	1
11	30-723-02K	Exhaust Header Pipe	1

AIR FILTER SYSTEM



ITEM	PART#	DESCRIPTION	REQ.
1	27-088-01K	Clamp, 2-1/8" Dia., Spring, 10/Pkg.	4
2	30-931-01K	Hose, Air Intake, Upper	1
3	25-021-01K	Nut, 5/16" Nyloc, 10/Pkg.	3
4	25-016-01K	Washer, 5/16" Flat, 10/Pkg.	3
5	30-725-41K	Pipe, Inlet	1
6	27-069-02K	Clamp, 1-1/2" Dia., P, 10/Pkg.	1

ITEM	PART#	DESCRIPTION	REQ.
7	27-082-06K	Hose, 1-3/4" ID, Silicone	1
8	30-724-05K	Air Filter Assembly c/w Filter	1
9	30-800-01K	Mount, Air Filter Assembly	1
10	30-724-11K	Filter, Air, 6/Pkg.	1
11	96-971-01K	Gasket, Manifold, Inlet, Kubota	1
12	96-101-28K	Manifold, Inlet	1



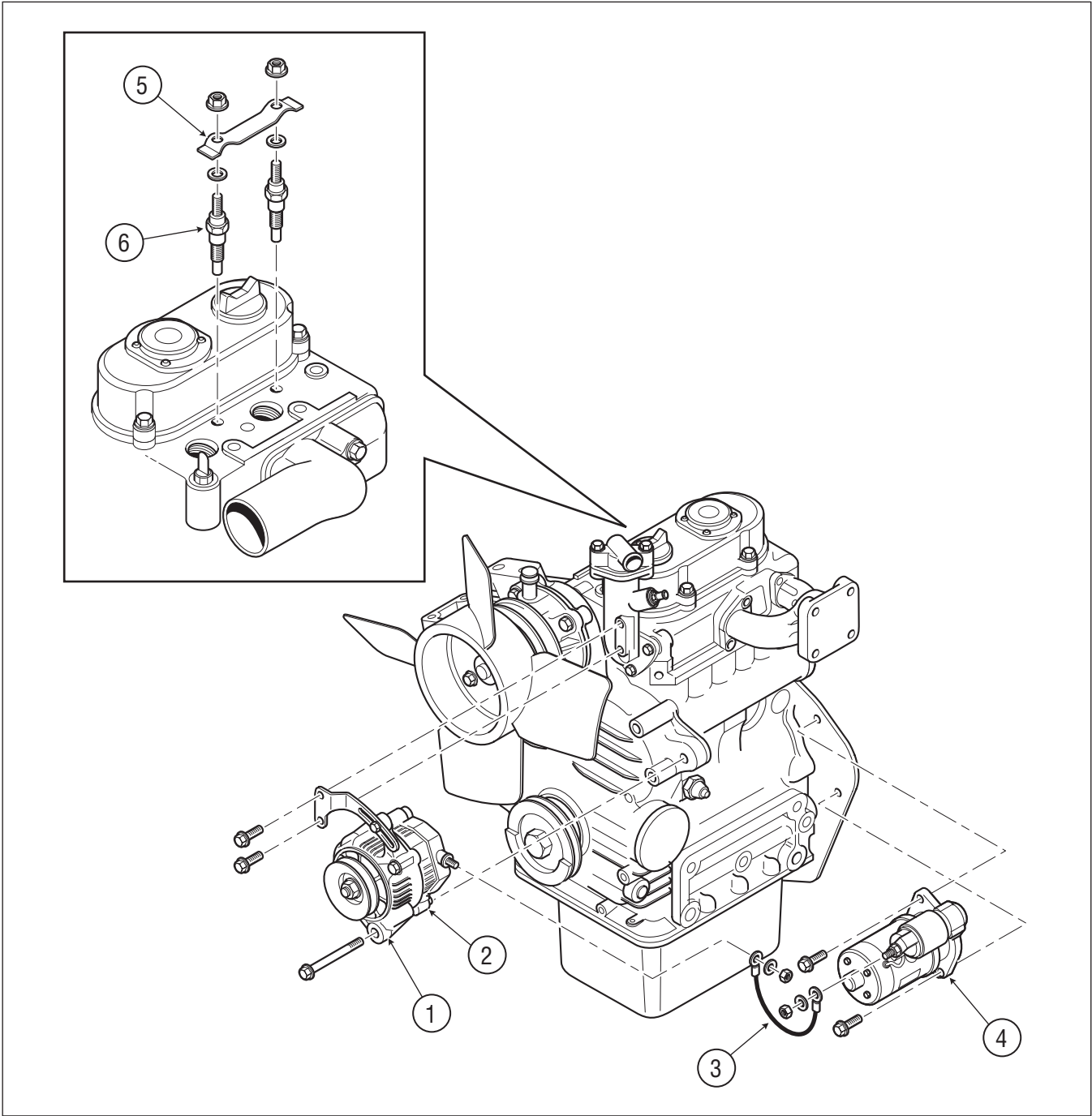
ITEM	PART#	DESCRIPTION	REQ.
1	40-304-01K	Belt, Generator	1
2	30-877-02K	Shim, Generator, 10/Pkg.	6
3	30-719-01K	Bracket, Mount, Generator Includes items 2, 4, 5, 6, 20	1
4	25-053-01K	Nut, 1/2" NC Nyloc, 10/Pkg.	4
5	25-052-01K	Washer, 1/2" Flat, 10/Pkg.	6
6	25-046-01K	Bolt, Hex Head, 1/2" NC x 2", 10/Pkg.	2
8	25-019-01K	Washer, 5/16" Lock, 10/Pkg.	1
9	30-004-01K	Pulley, Flywheel, 9" c/w Hardware	1
10	25-102-01K	Nut, M8 x 1-1/4" Nyloc, 10/Pkg.	1
11	30-722-03K	Bracket, Tensioner	1
12	25-250-01K	Bolt, Hex Head, M8 x 1.25 x 25mm, 10/Pkg.	2

ITEM	PART#	DESCRIPTION	REQ.
13	30-736-01K	Generator, 120 VAC, Complete (See page 10)	1
14	25-441-08K	Arm, Tensioner	1
15	25-051-01K	Washer, 1/2" Lock, 10/Pkg.	1
16	30-443-01K	Spacer, Tensioner	1
17	25-055-01K	Bolt, Hex Head, 1/2" NC x 7-1/2", 10/Pkg.	1
18	25-031-01K	Bolt, Hex Head, 3/8" NC x 1", 10/Pkg.	4
19	25-039-01K	Washer, 3/8" Lock, 10/Pkg.	4
20	30-004-02K	Pulley, Generator, 6"	1
21	25-782 -01K	Bolt, Hex Head, 1/2" NC x 6-1/2", 10/Pkg.	1
	30-857-05K	TENSIONER KIT Includes items 7, 8, 10, 11, 12 and 14	1

This exploded view diagram illustrates the components of a car horn assembly. The main horn body (1) is shown on the left. The assembly includes a mounting bracket (3) with mounting holes (2) and (7). A horn cap (4) is shown with a horn element (5) inside. A horn switch (12) is shown with a mounting bracket (11) and a mounting screw (10). A horn wire (8) is shown with a connector (9). The diagram uses dashed lines to show the alignment of the components.

ITEM	PART#	DESCRIPTION	REQ.

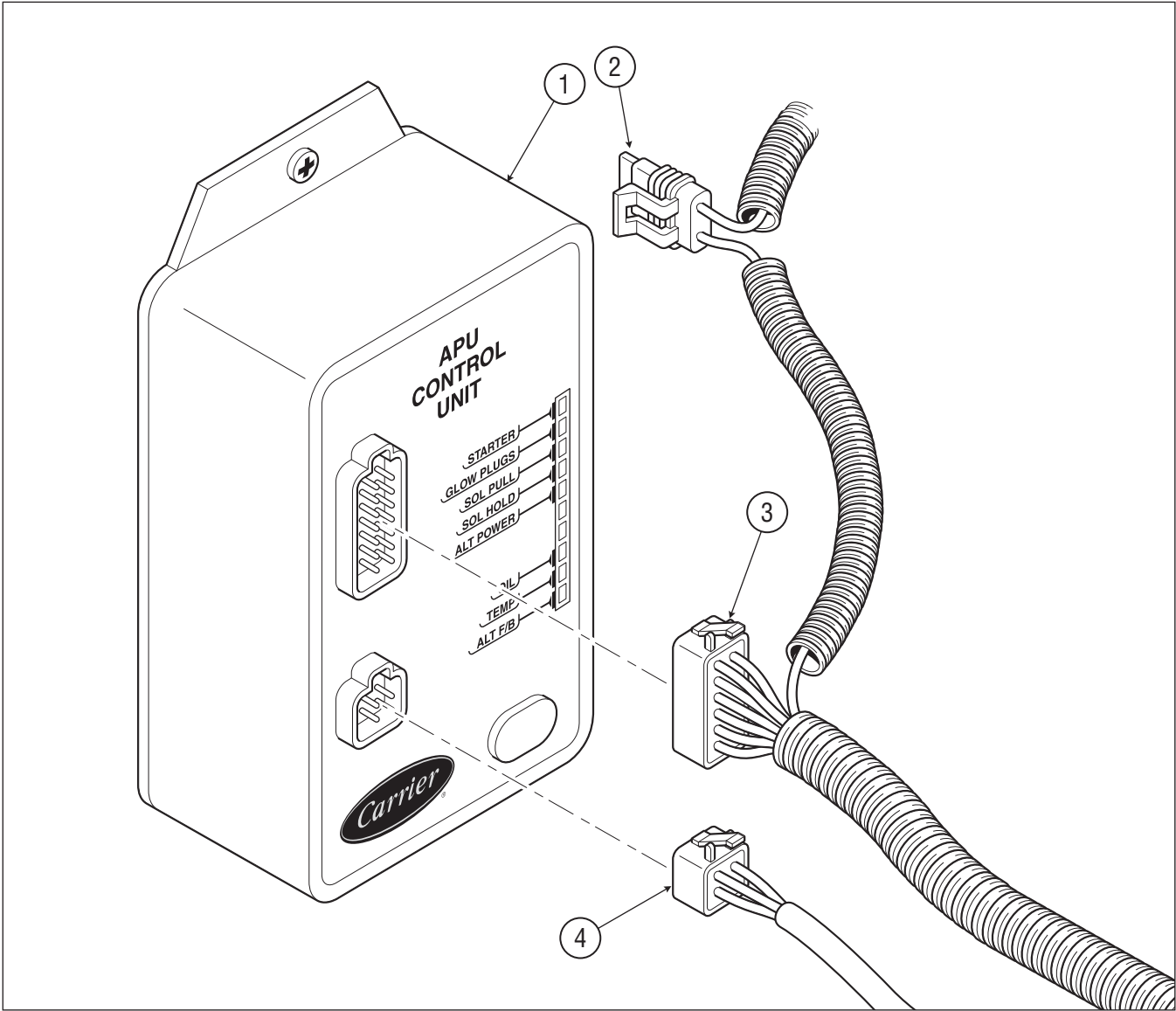
ELECTRICAL SYSTEM **ALTERNATOR/STARTER MOTOR/GLOW PLUGS**



ITEM	PART#	DESCRIPTION	REQ.
1	96-101-21K	Alternator, 60 Amp DC	1
2	96-111-03K	Spacer, Alternator, 1/Pkg.	1
3	30-259-01K	Harness, Alt/Pos 1/4" - 3/8"	1
4	96-101-22K	Starter, Engine c/w Solenoid	1
5	96-937-01K	Jumper Plate, Glow Plug c/w Fasteners	1
6	96-937-00K	Glow Plug	2

ITEM	PART#	DESCRIPTION	REQ.

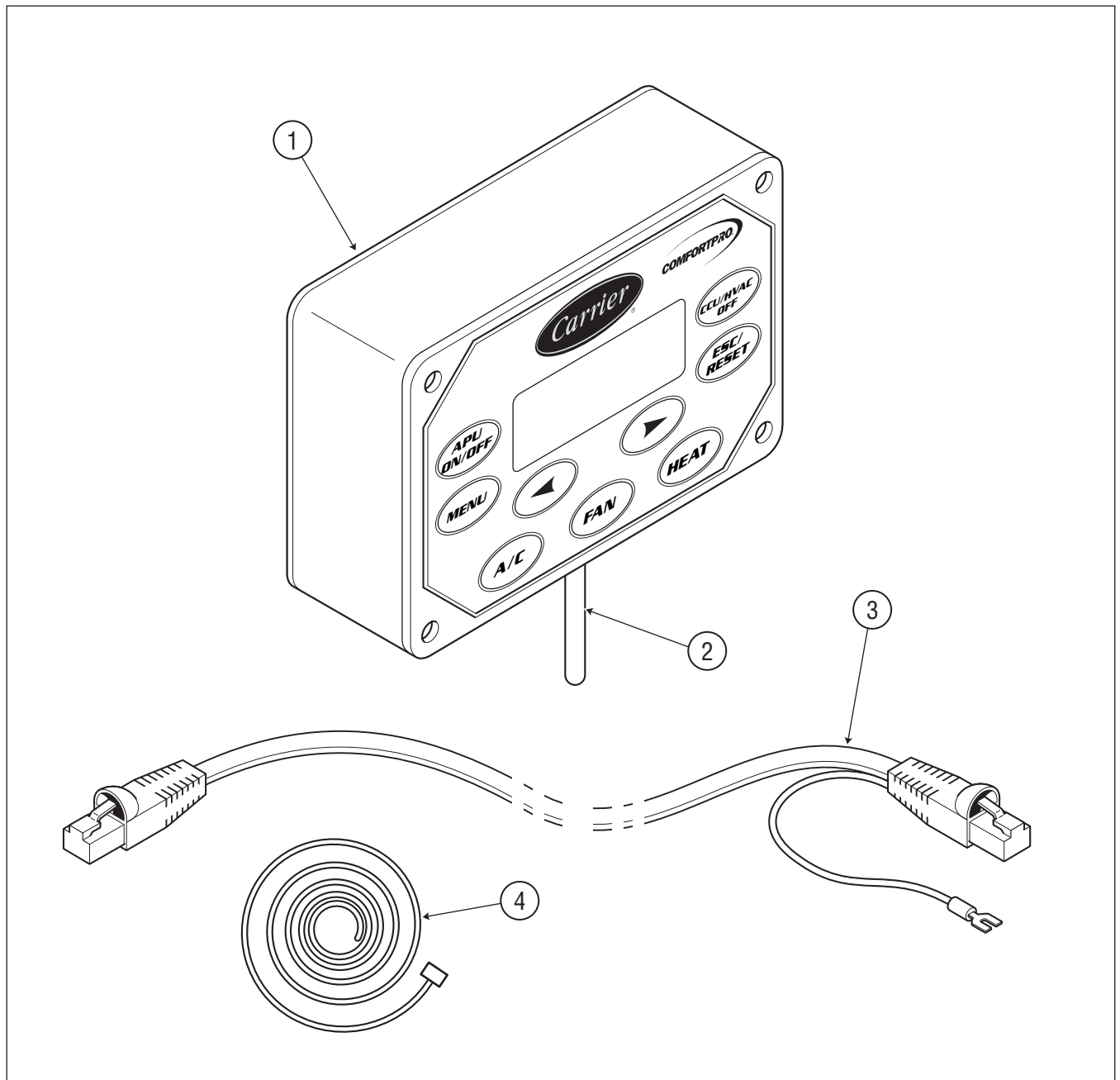
APU



ITEM	PART#	DESCRIPTION	REQ.
1	30-726-01K	APU Control Unit	1
2	26-086-01K	Fuse, ATC 20 Amp, 10/Pkg.	1
3	30-730-18K	Harness, Engine	1
4	30-746-01K	Harness, APU Control	1

ITEM	PART#	DESCRIPTION	REQ.
------	-------	-------------	------

ELECTRICAL SYSTEM DRIVER CONTROL PANEL

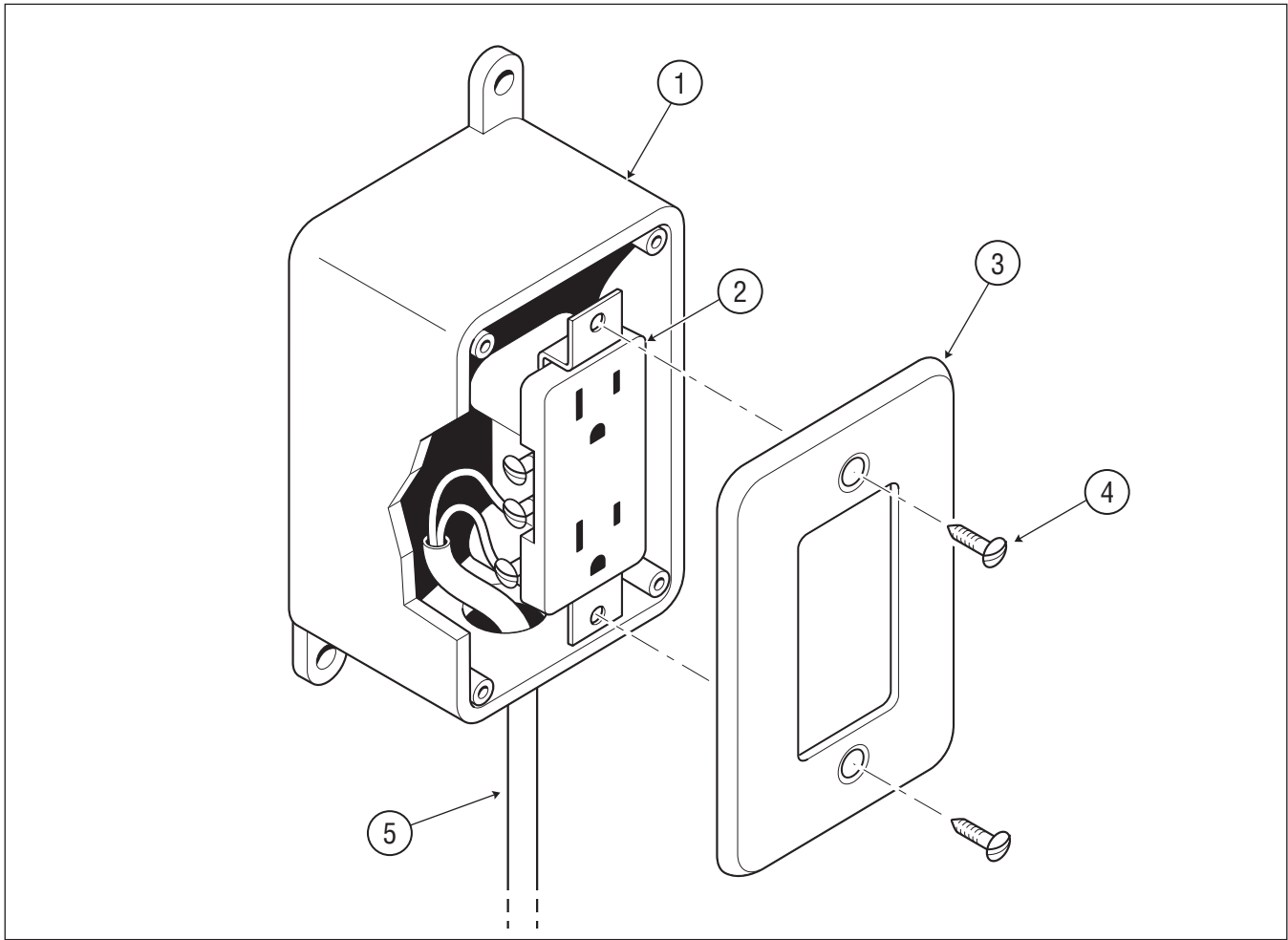


ITEM	PART#	DESCRIPTION	REQ.
1	30-737-30K	Driver Control Panel c/w item 2	1
2	30-867-05K	Extended Temp Sensor	1
3	30-742-05K	Harness, Driver Control Panel	1
4	30-867-00K	REMOTE TEMP SENSOR KIT	1

ITEM	PART#	DESCRIPTION	REQ.

ELECTRICAL SYSTEM

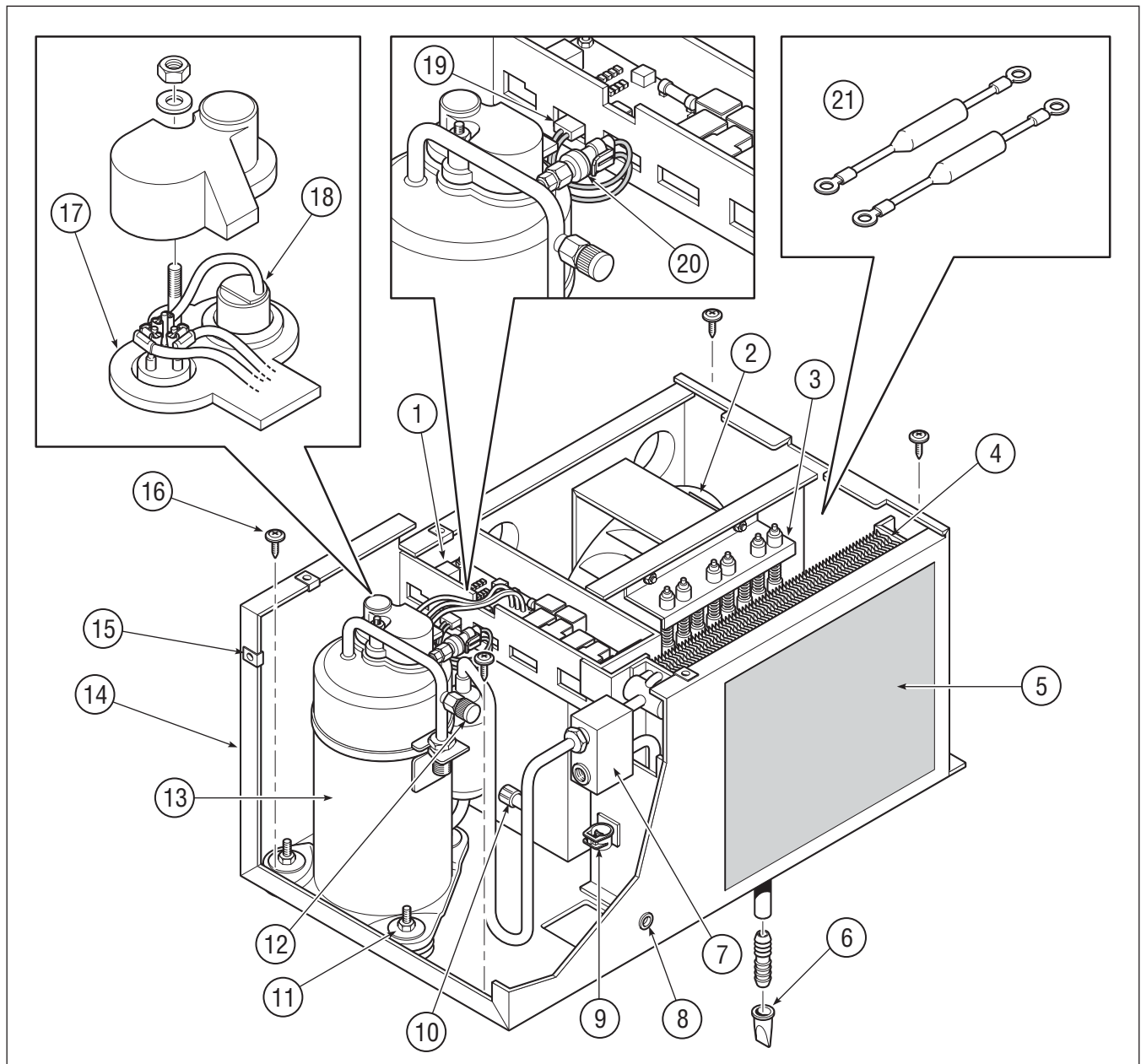
120 VAC RECEPTACLE



ITEM	PART#	DESCRIPTION	REQ.
1	30-752-00K	Receptacle c/w Harness	1
2	30-543-01K	Receptacle, 115 VAC	1
3	30-846-01K	Cover, Receptacle, 115 VAC	1
4	25-445-01K	Bolt, Phillips Head, #6-32 x 1/2", 10/Pkg.	2
5	30-753-01K	Harness, Receptacle	1

ITEM	PART#	DESCRIPTION	REQ.

AIR CONDITIONING SYSTEM INTERNAL COMPONENTS

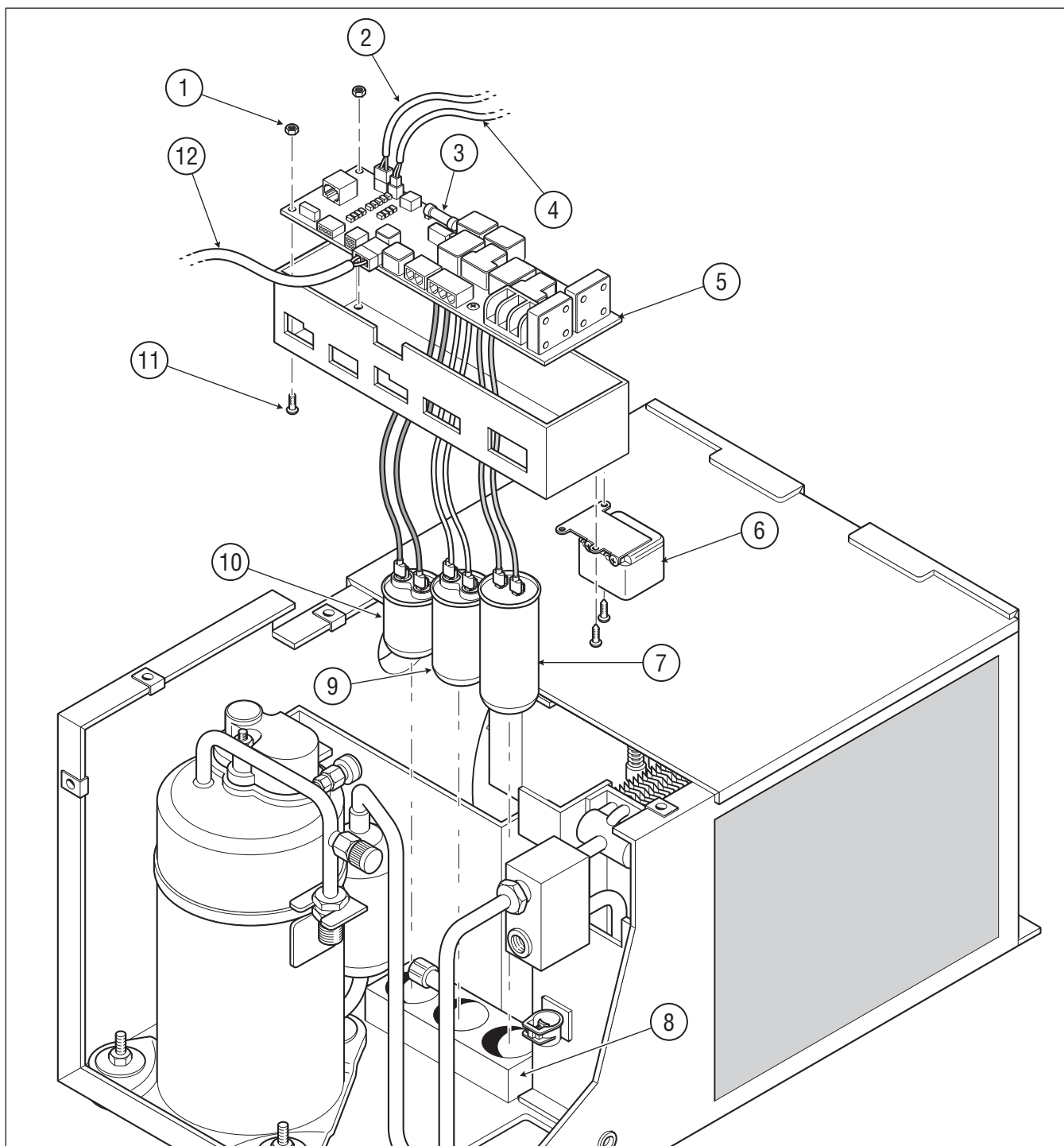


ITEM	PART#	DESCRIPTION	REQ.
1	55-677-50K	Controls, CCU (See page 16)	1
2	30-780-01K	Blower Fan c/w Wiring	1
3	30-759-00K	Heating Unit c/w Wiring	1
4	55-816-01K	Evaporator Coil, Complete	1
5	55-833-01K	Filter Screen, Air Inlet	1
6	30-868-01K	Duckbill, CCU Drain	1
7	55-817-01K	Valve, TX CCU	1
8	25-464-01K	Grommet, 1/2" x 3/4", 10/Pkg.	1
9	30-961-01K	Strain Relief, 0.6" x 1.15"	1
10	55-090-01K	Shraeder Caps, Small, 50/Pkg.	1
11	30-781-05K	Mounting Hardware, Compressor c/w 3 sets of Washers, Nuts, Bolts and Shock Mounts	1
12	55-075-01K	Shraeder Caps, Large, 50/Pkg.	1

ITEM	PART#	DESCRIPTION	REQ.
13	55-810-01K	Compressor, Complete	1
14	55-689-05K	Enclosure, CCU, Main	1
15	25-290-01K	Nuts, CCU Panel	6
16	55-190-01K	Screw, Self Tapping, #10 x 1", 10/Pkg.	6
17	55-121-08K	Gasket, A/C Compressor	1
18	55-121-07K	Breaker, A/C Compressor	1
19	55-850-01K	Harness, Pressure Switch	1
20	55-851-01K	Switch, Binary R-134A	1
21	30-759-04K	Thermal Fuse Kit	1
	55-800-01K	Evaporator/Heat Unit, Complete	
	55-060-00K	Shraeder Valve and Caps	1

AIR CONDITIONING SYSTEM

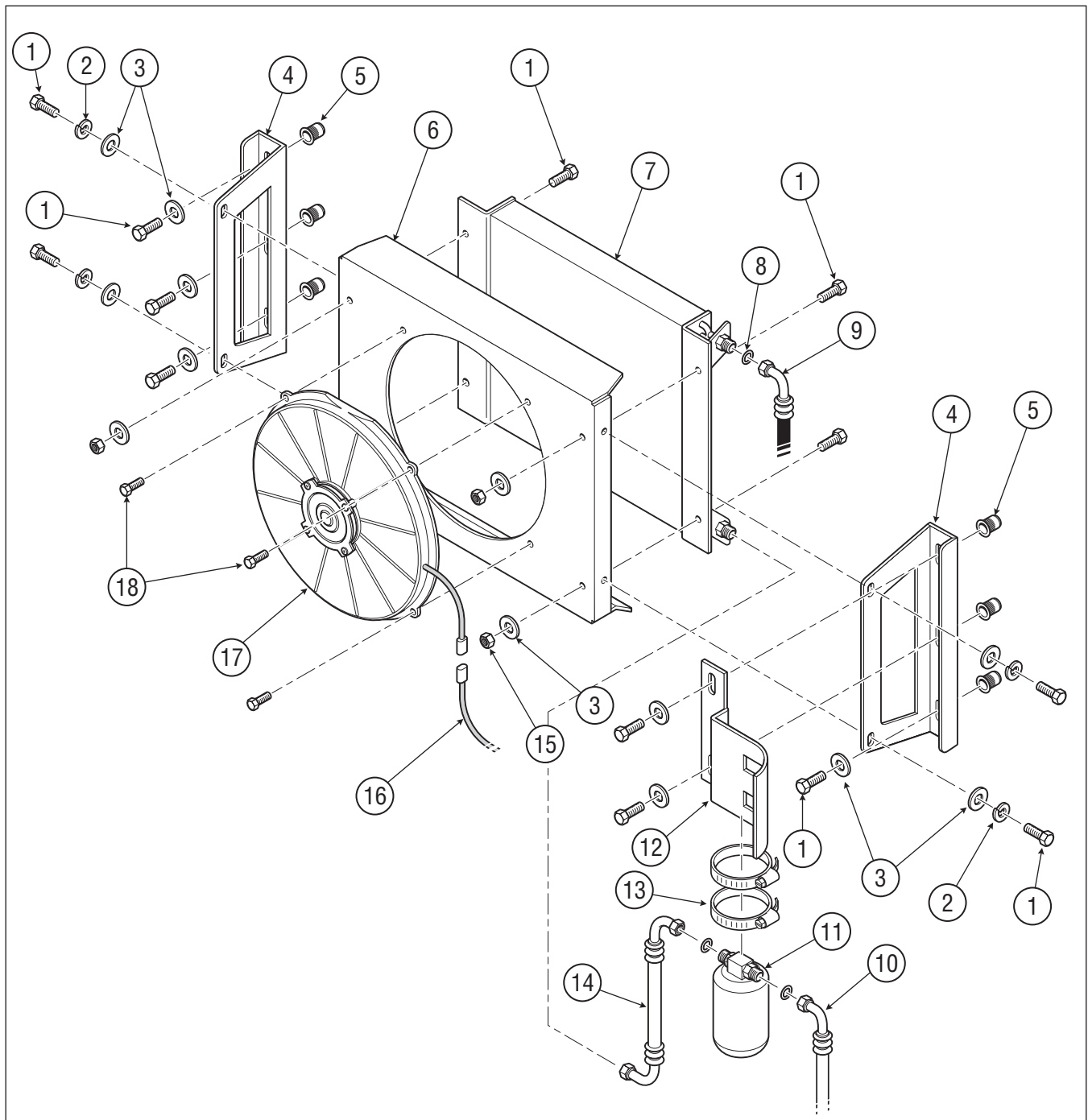
CCU CONTROLLER



ITEM	PART#	DESCRIPTION	REQ.
1	25-130-01K	Nut, #8-32, 10/Pkg.	2
2	30-751-01K	Sensor, Evaporator Temp	1
3	26-575-01K	Fuse, 3 Amp, CCU, 10/Pkg.	1
4	30-750-01K	Sensor, Heater	1
5	55-677-50K	Controls, CCU c/w items 3, 5, 6	1
6	55-815-01K	Relay, Potential	1
7	40-203-01K	Capacitor, 25 MFD	1

ITEM	PART#	DESCRIPTION	REQ.
8	55-812-01K	Bracket, Capacitor, CCU, Foam	1
9	55-814-01K	Capacitor, Compressor Run R134A 35MFD	1
10	55-813-01K	Capacitor, Start 134A Compressor	1
11	25-076-01K	Screw, Phillips Head, #8-32 x 1/4", 10/Pkg.	5
12	30-731-01K	Harness, CCU, 12V	1

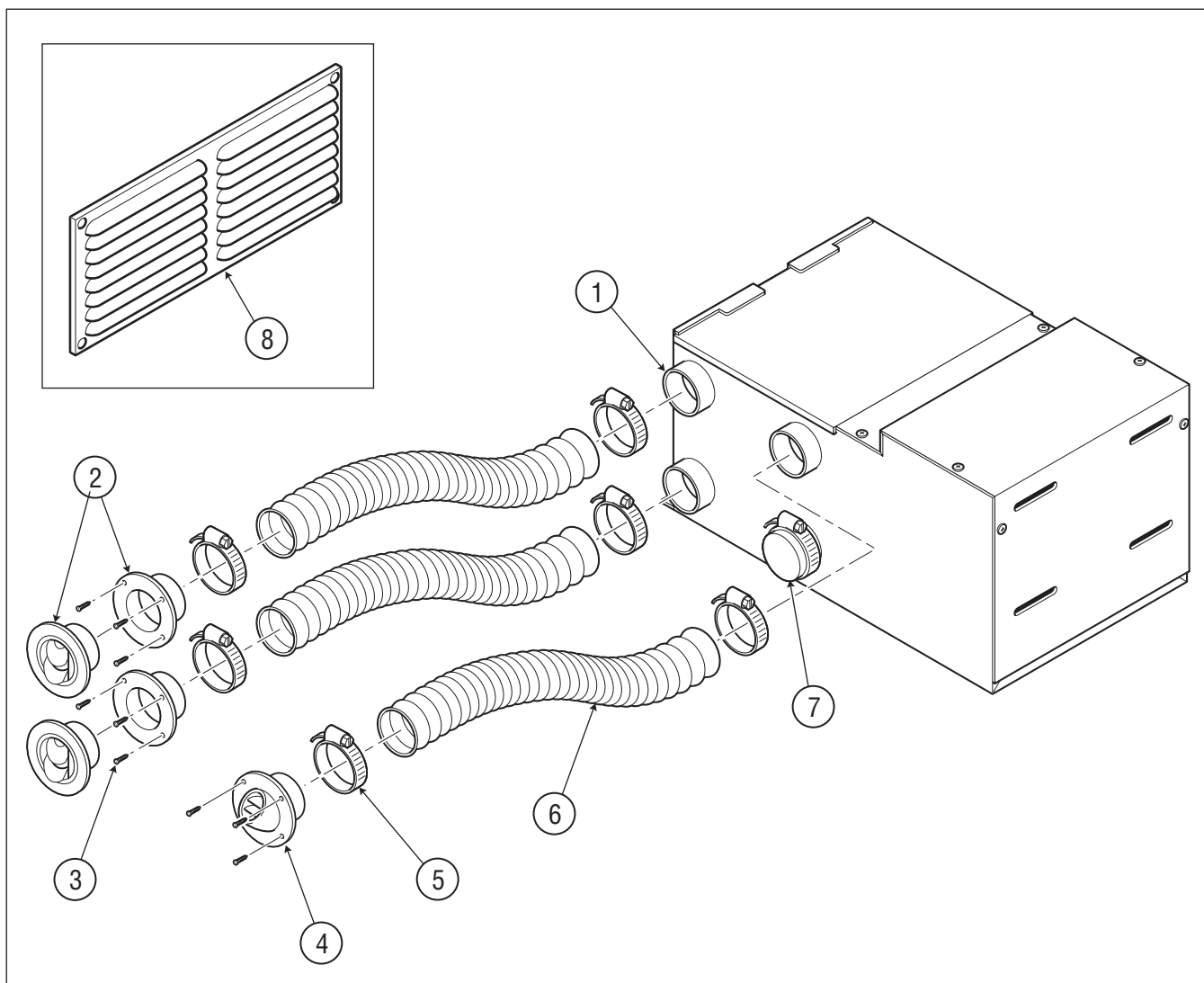
AIR CONDITIONING SYSTEM CONDENSER



ITEM	PART#	DESCRIPTION	REQ.
1	25-023-50K	Bolt, Hex Head, 5/16" SS, 10/Pkg.	10
2	25-019-50K	Washer, 5/16" Lock, SS, 10/Pkg.	4
3	25-016-50K	Washer, 5/16" Flat, SS, 10/Pkg.	14
4	55-882-01K	Bracket, Condenser Mount	2
5	25-306-50K	Nutsert, 5/16 NC SS	6
6	55-884-01K	Housing, Condenser Coil	1
7	55-881-01K	Condenser Coil	1
8	55-220-03K	O-Ring, A/C, 10/Pkg.	2
9	55-220-60K	Hose, A/C Discharge	1
10	55-220-70K	Hose, A/C Liquid	1

ITEM	PART#	DESCRIPTION	REQ.
11	55-831-01K	Dryer	1
12	55-832-01K	Bracket, Dryer	1
13	27-146-01K	Clamp, Gear, Dryer	2
14	55-220-80K	Hose, Liq Cond, Dryer	1
15	25-015-50K	Nut, 1/4-20 Nyloc SS	4
16	30-757-01K	Harness, Condenser Fan	1
17	55-352-01K	Fan, Condenser	1
18	25-003-50K	Bolt, HHCS 1/4-20X3/4 SS	4
	55-880-01K	Condenser Assembly Includes all items except 8, 9 and 10	1

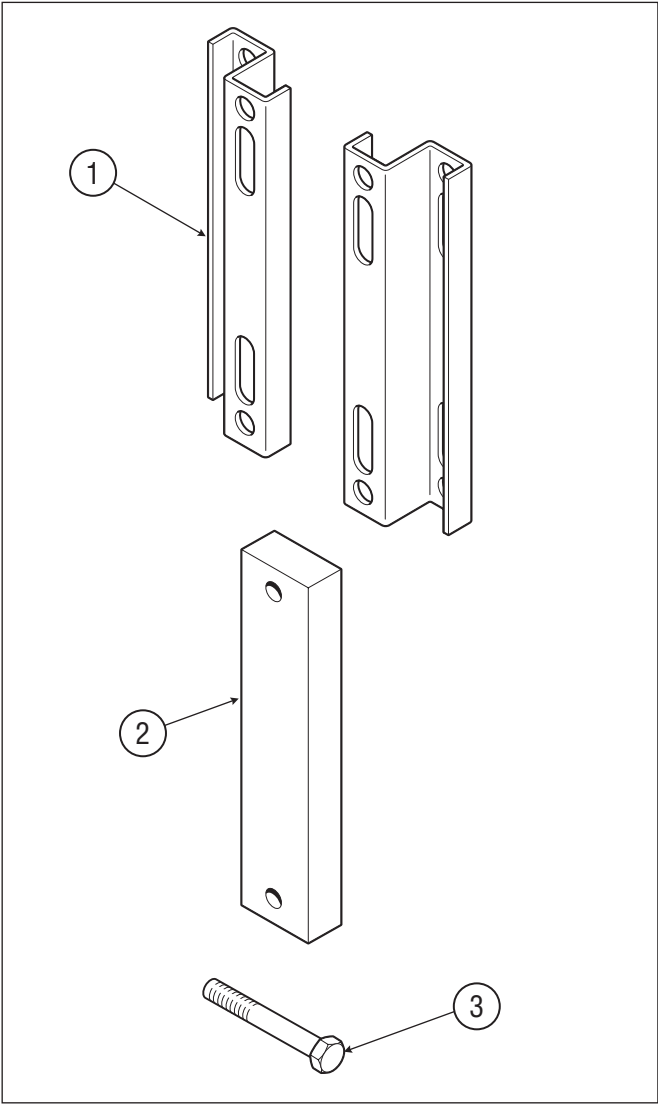
AIR CONDITIONING SYSTEM OUTER CASING/VENT DUCTS



ITEM	PART#	DESCRIPTION	REQ.
1	55-699-01K	Ring, Outlet, 3"	4
2	55-146-01K	Diffusers, 3"	2
3	25-401-01K	Screw, Self Tap, #8 x 1-1/4", 10/Pkg.	20
4	55-146-06K	Diffuser, 3", 60 Degrees	1
5	27-001-01K	Clamp, 3" Dia., Gear, 10/Pkg.	6
6	55-318-01K	Hose, Ducting, 3", 30 ft.	30 ft.
7	55-216-01K	Outlet Cover, CCU, 10/Pkg.	1
8	30-836-01K	Grill, Return Air, 2/Pkg.	2

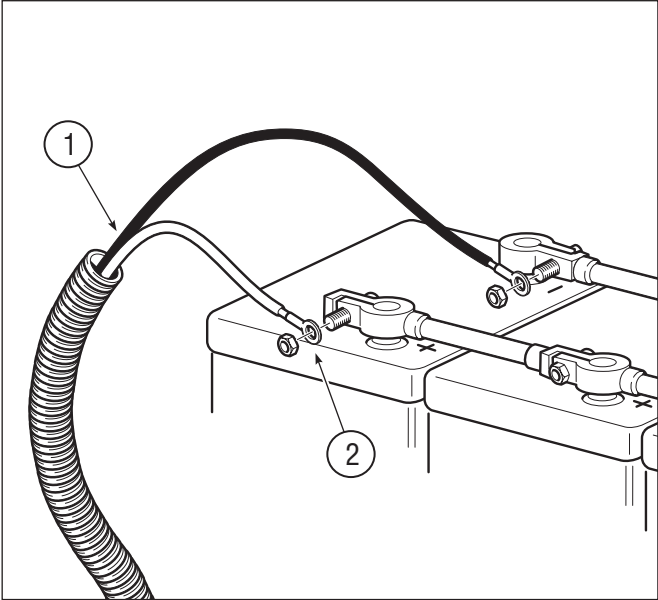
ITEM	PART#	DESCRIPTION	REQ.
	PK0315	DUCT KIT Includes items 2 to 6 and 8	1

ACCESSORIES
FRAME MOUNTING BRACKETS



ITEM	PART#	DESCRIPTION	REQ.
1	30-863-00K	MOUNTING KIT, 2" Offset c/w Mounting Hardware	1
2	30-853-01K	Spacer, 1" x 2" x 15-1/2"	2
3	25-411-01K	Bolt, Hex Head, 3/4" NC x 9", 4/Pkg.	4

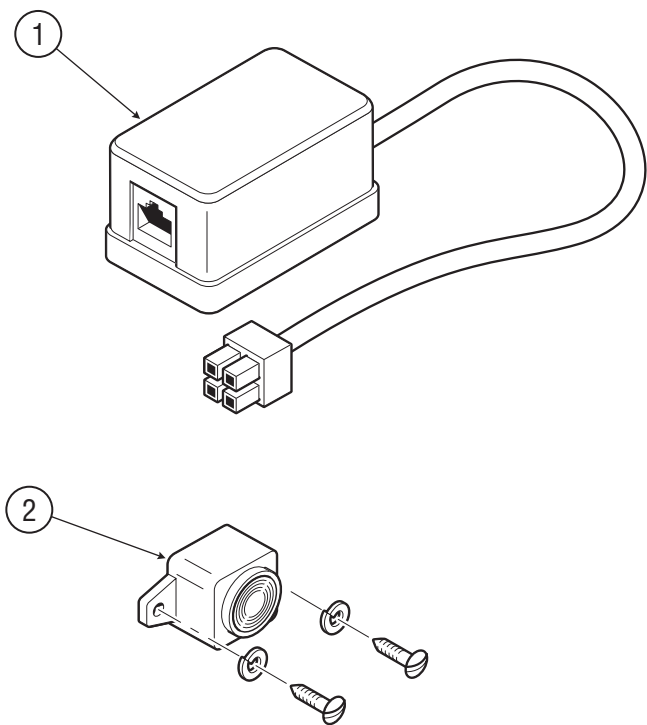
BATTERY CABLES



ITEM	PART#	DESCRIPTION	REQ.
1	30-806-03K	Cable, Battery, Dual c/w Ring Terminals and Loom	20 ft.
2	30-957-00K	BATTERY TERMINAL KIT 2 Ring Terminals and Heatshrink	1

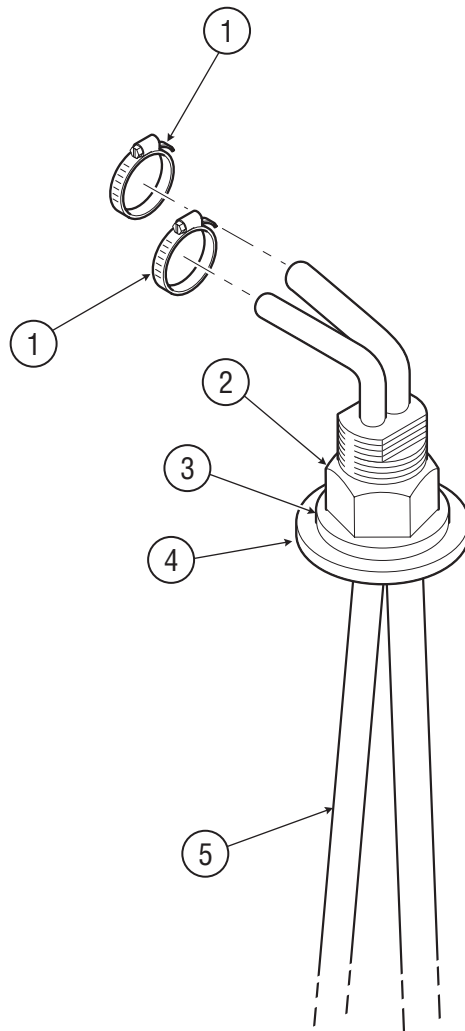
ACCESSORIES

BUZZER KIT/APU CONTROL CABLE CONVERTER



ITEM	PART#	DESCRIPTION	REQ.
1	30-848-01K	APU Control Cable Converter	1
2	30-768-00K	Buzzer c/w Fasteners	1

ITEM	PART#	DESCRIPTION	REQ.

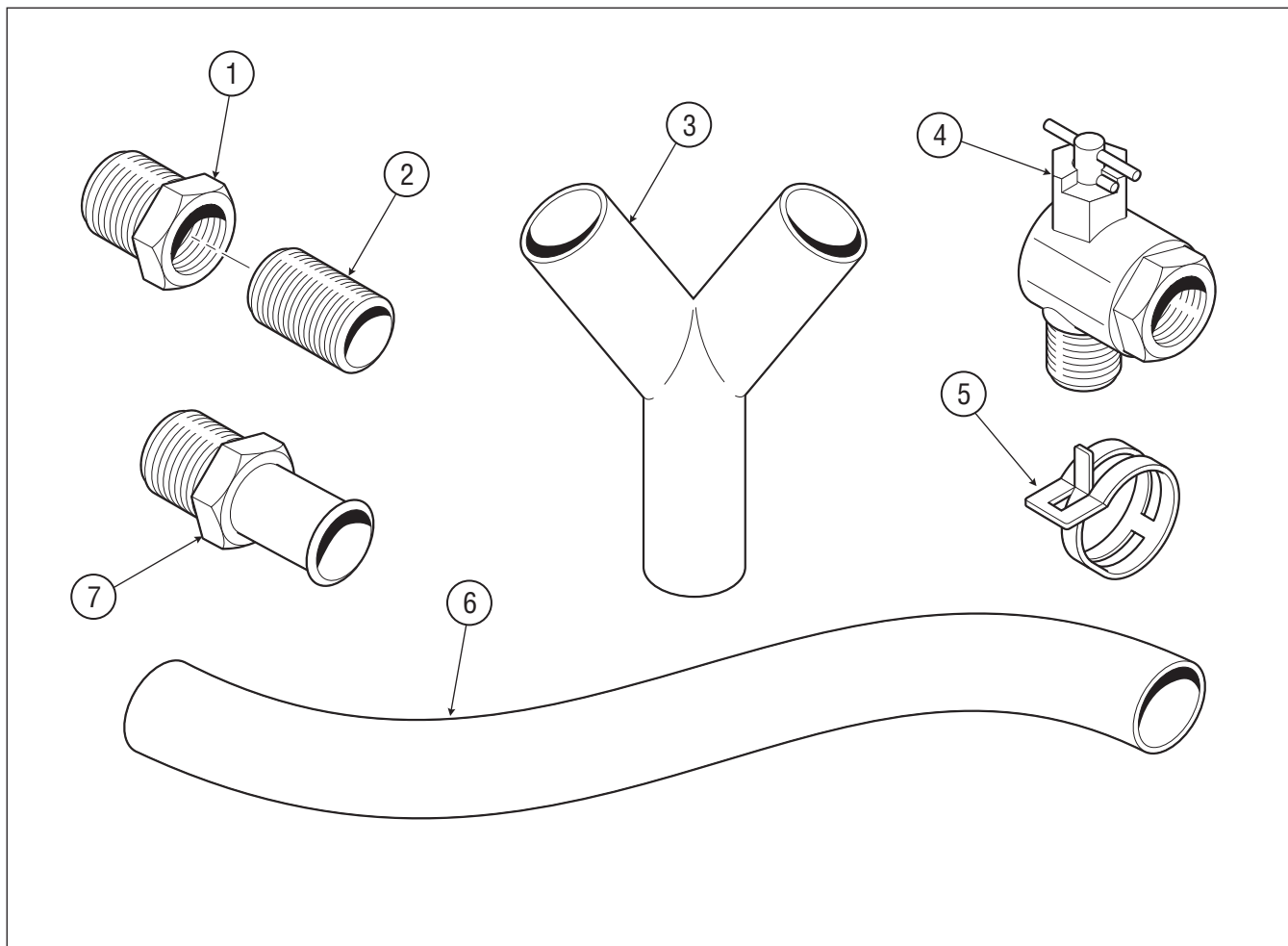


ITEM	PART#	DESCRIPTION	REQ.
1	27-076-01K	Clamp, 1/4" Dia., Gear, 10/Pkg.	2
2	25-310-01K	Nut, 3/4" NC, Jam, 10/Pkg.	1
3	25-315-01K	Washer, 3/4" x 1-1/2" OD, 10/Pkg.	1
4	30-796-02K	Gasket, Fuel Pickup, 10/Pkg.	1
5	30-795-10K	Fuel Pickup, 3/16" and 5/16" c/w items 3 to 5	1

ITEM	PART#	DESCRIPTION	REQ.
------	-------	-------------	------

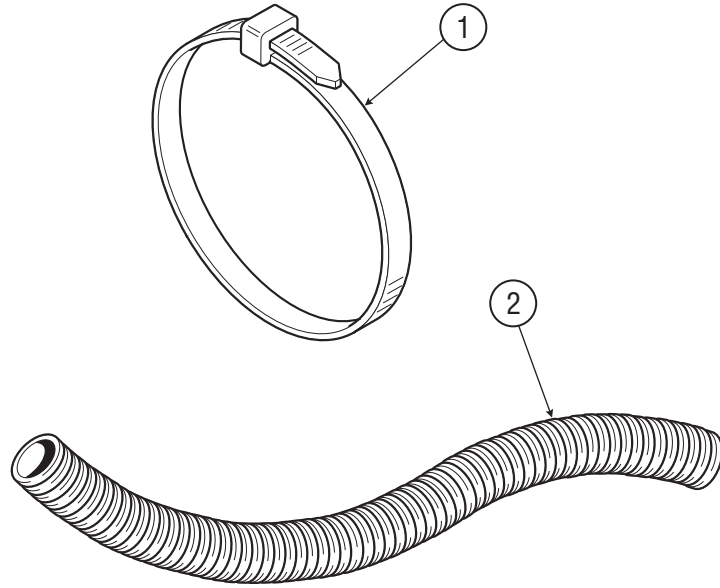
ACCESSORIES

ENGINE FITTINGS



ITEM	PART#	DESCRIPTION	REQ.
1	27-062-01K	FTG 3/4NPTM X 1/2 NPTF	
2	89-403-01K	FTG 1/2NPTM X 1 Nipple	
3	75-518-01K	Y Connector	
4	27-120-01K	Coolant Tap, 1/2", Ball	
5	27-083-01K	Clamp, 1-1/16" Dia., Spring, 10/Pkg.	
6	27-015-02K	Hose, 3/4" ID, Silicone, 50 ft./Pkg.	
7	27-032-01K	FTG 3/4 BARB X 1/2NPTM	

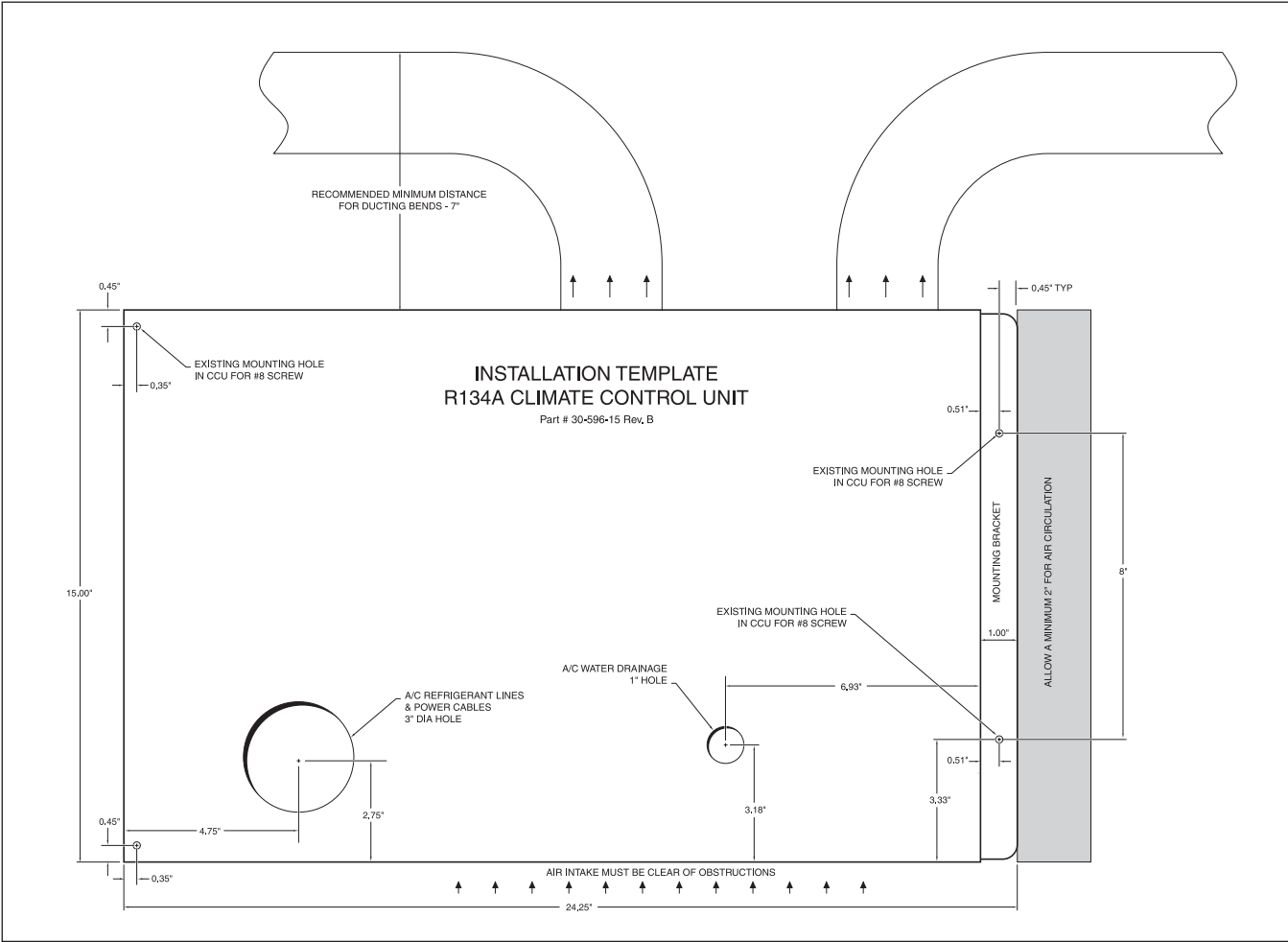
ITEM	PART#	DESCRIPTION	REQ.



ITEM	PART#	DESCRIPTION	REQ.
1	26-076-01K	Cable Tie, 3.9" White, 50/Pkg.	
	26-076-02K	Cable Tie, 11.5" Black, 50/Pkg.	
	26-403-01K	Cable Tie, 14" Black, 50/Pkg.	
2	26-082-01K	Loom, 1/2", 20 ft./Pkg.	
	28-048-01K	Loom, 1", 20 ft./Pkg.	

ITEM	PART#	DESCRIPTION	REQ.

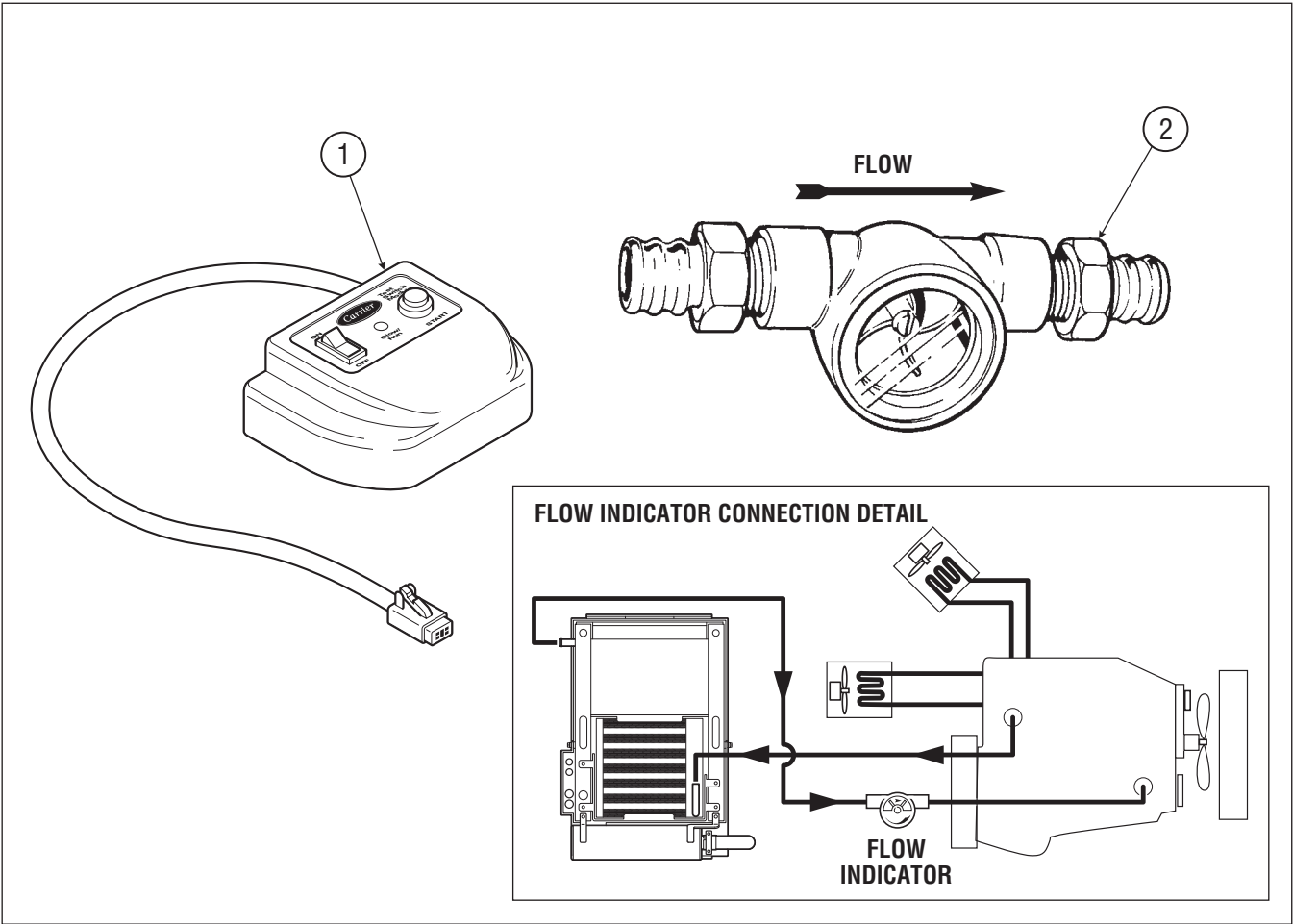
ACCESSORIES
DOCUMENTATION



ITEM	PART#	DESCRIPTION	REQ.
	30-596-15K	CCU Mounting Template	1

ITEM	PART#	DESCRIPTION	REQ.

TEST EQUIPMENT & SPECIAL TOOLS



ITEM	PART#	DESCRIPTION	REQ.
1	PG1008	Test Switch Module	
2	TK9002	Flow Indicator Allows the user to determine: <ul style="list-style-type: none">• Direction of flow• Speed of flow• Air (if any in the coolant system)	

ITEM	PART#	DESCRIPTION	REQ.

OPTIONS

ITEM	PART#	DESCRIPTION	REQ.
1	PG1000	Shore Power Module	
2	PG1004	APU Display Stand	
3	PG1006	Programmer Control S/W	
4	PG1011	APU Control Extended Harness Kit	
5	PG1014	Wall Mount Duct	
6	PG1016	Wall Mount Duct Extension	
7	PG1022	Engine Interlock Kit	
8	PG1023	Condenser Winter Cover, Large	

ITEM	PART#	DESCRIPTION	REQ.

PART#	DESCRIPTION	PAGE#	PART#	DESCRIPTION	PAGE#
25-003-50K	Bolt, HHCS 1/4-20X3/4 SS	17	27-062-01K	FTG 3/4NPTM X 1/2 NPTF	22
25-015-50K	Nut, 1/4-20 Nyloc SS	3, 17	27-069-02K	Clamp, 1-1/2" Dia., P, 10/Pkg.	8
25-016-01K	Washer, 5/16" Flat, 10/Pkg.	8	27-076-01K	Clamp, 1/4" Dia., Gear, 10/Pkg.	21
25-016-50K	Washer, 5/16" Flat, SS, 10/Pkg.	1, 3, 5, 10, 17	27-082-05K	Hose, 1" ID x 3/4 ft.	4
25-017-01K	Washer, 3/8" Flat, 10/Pkg.	3	27-082-06K	Hose, 1-3/4" ID, Silicone	8
25-019-01K	Washer, 5/16" Lock, 10/Pkg.	9	27-083-01K	Clamp, 1-1/16" Dia., Spring, 10/Pkg.	5, 22
25-019-50K	Washer, 5/16" Lock, SS, 10/Pkg.	1, 17	27-085-01K	Clamp, 1-3/8" Dia., Spring, 10/Pkg.	4
25-021-01K	Nut, 5/16" Nyloc, 10/Pkg.	5, 7, 8	27-088-01K	Clamp, 2-1/8" Dia., Spring, 10/Pkg.	8
25-023-50K	Bolt, Hex Head, 5/16" SS, 10/Pkg.	1, 3, 5, 10, 17	27-097-06K	Clamp, P 0.688	10
25-031-01K	Bolt, Hex Head, 3/8" NC x 1", 10/Pkg.	9	27-097-21K	Clamp, P .625 Double	3
25-032-01K	HHCS, 3/8NC x 1-1/2 ZP GR5	3	27-120-01K	Coolant Tap, 1/2", Ball	22
25-039-01K	Washer, 3/8" Lock, 10/Pkg.	9	27-146-01K	Clamp, Gear, Dryer	17
25-040-01K	Nut, 3/8NC Nyloc	3	28-048-01K	Loom, 1", 20 ft./Pkg.	23
25-046-01K	Bolt, Hex Head, 1/2" NC x 2", 10/Pkg.	9	30-004-01K	Pulley, Flywheel, 9" c/w Hardware	9
25-051-01K	Washer, 1/2" Lock, 10/Pkg.	9	30-004-02K	Pulley, Generator, 6"	9
25-052-01K	Washer, 1/2" Flat, 10/Pkg.	2, 3, 9	30-017-03K	Valve, Bleeder, Complete	4
25-053-01K	Nut, 1/2" NC Nyloc, 10/Pkg.	2, 9	30-123-01K	Water Pump	4
25-055-01K	Bolt, Hex Head, 1/2" NC x 7-1/2", 10/Pkg.	9	30-124-01K	Gasket, Water Pump	4
25-066-01K	Nut, 3/4" NC Nyloc, 10/Pkg.	1	30-186-02K	Filter, Fuel, In-line, 6/Pkg.	3
25-069-01K	Bolt, Hex Head, 3/4" NC x 7-1/2", 10/Pkg.	1	30-228-01K	Thermostat, Engine	4
25-076-01K	Screw, Phillips Head, #8-32 x 1/4", 10/Pkg.	16	30-229-01K	Gasket, Thermostat	4
25-092-01K	Washer, M6 Lock, 10/Pkg.	5	30-230-01K	Fan, Engine Cooling	4
25-102-01K	Nut, M8 x 1-1/4" Nyloc, 10/Pkg.	9	30-259-01K	Harness, Alt/Pos 1/4" - 3/8"	11
25-130-01K	Nut, #8-32, 10/Pkg.	16	30-266-01K	Sensor, Coolant, Overheat	4
25-155-50K	Washer, 1/4 x 5/8 Flat SS, 10/Pkg.	3	30-377-01K	Fuel Pump, Suction	3
25-196-01K	Washer, #8 X 7/16, 10/Pkg.	10	30-378-02K	Gasket, Fuel Pump	3
25-250-01K	Bolt, Hex Head, M8 x 1.25 x 25mm, 10/Pkg.	9	30-443-01K	Spacer, Tensioner	9
25-251-01K	SHCS 8-32 X 7/8 ZP, 10/Pkg.	10	30-543-01K	Receptacle, 115 VAC	14
25-290-01K	Nuts, CCU Panel	15	30-577-21K	Carrier Logo c/w Fasteners	1
25-303-02K	Washer, 1/2" Shock Mount, 10/Pkg.	2	30-596-15K	CCU Mounting Template	24
25-306-50K	Nutsert, 5/16 NC SS	17	30-700-30K	Frame, APU	1
25-307-01K	Washer, 3/4" x 1-1/2" OD, 10/Pkg.	1	30-705-10K	Enclosure, Upper, Complete	1
25-310-01K	Nut, 3/4" NC, Jam, 10/Pkg.	21	30-707-01K	Mount Engine, Front	2
25-315-01K	Washer, 3/4" x 1-1/2" OD, 10/Pkg.	21	30-708-01K	Mount Engine, Rear	2
25-401-01K	Screw, Self Tap, #8 x 1-1/4", 10/Pkg.	18	30-710-00K	Enclosure, Lower, Complete	1
25-411-01K	Bolt, Hex Head, 3/4" NC x 9", 4/Pkg.	19	30-715-01K	Access Cover, Upper	1
25-441-08K	Arm, Tensioner	9	30-716-01K	Access Cover, Lower	1
25-444-01K	Bolt, Hex Head, M6 x 1mm x 60mm, 10/Pkg.	5	30-717-50K	Radiator	5
25-445-01K	Bolt, Phillips Head, #6-32 x 1/2"	14	30-718-00K	Engine Shock Mount Kit	2
25-449-02K	Bolt, M10 x 1.25mm x 25mm, 10/Pkg.	2	30-718-01K	Shock Mount, 2 Piece (set)	2
25-450-01K	Washer, M10 Flat, 10/Pkg.	2	30-719-01K	Bracket, Mount, Generator	9
25-451-02K	Bolt, Hex Head, 1/2" NC x 3-1/2", 10/Pkg.	2	30-722-03K	Bracket, Tensioner	9
25-455-01K	Bolt, Hex Flange Head, 5/16" NC x 1", 10/Pkg.	7	30-723-01K	Muffler	7
25-455-50K	HHWCS 5/16-18 X 1 SS, 10/Pkg.	1	30-723-02K	Exhaust Header Pipe	7
25-456-01K	Nut, 5/16" NC Panel, 10/Pkg.	1	30-723-40K	Bellows Exhaust	7
25-461-01K	Handwheel, 3 Lobe	1	30-724-05K	Air Filter Assembly c/w Filter	8
25-464-01K	Grommet, 1/2" x 3/4", 10/Pkg.	1, 15	30-724-11K	Filter, Air, 6/Pkg.	8
25-782-01K	Bolt, Hex Head, 1/2" NC x 6-1/2"	9	30-725-03K	Exhaust Pipe, 90 Degree x 24"	7
26-076-01K	Cable Tie, 3.9" White, 50/Pkg.	23	30-725-41K	Pipe, Inlet	8
26-076-02K	Cable Tie, 11.5" Black, 50/Pkg.	23	30-726-01K	APU Control Unit	12
26-082-01K	Loom, 1/2", 20 ft./Pkg.	23	30-730-18K	Harness, Engine	12
26-083-01K	Strain Relief, 3/4"	10	30-731-01K	Harness, CCU, 12V	16
26-086-01K	Fuse, ATC 20 Amp, 10/Pkg.	12	30-735-01K	Pipe, Coolant Inlet	5
26-403-01K	Cable Tie, 14" Black, 50/Pkg.	23	30-736-01K	Generator, 120 VAC, Complete	9, 10
26-456-01K	Breaker, 35A Sealed	10	30-737-30K	Driver Control Panel	13
26-575-01K	Fuse, 3 Amp, CCU, 10/Pkg.	16	30-742-05K	Harness, Driver Control Panel	13
26-712-15K	Harness, Ground Strap	10	30-746-01K	Harness, APU Control	12
27-001-01K	Clamp, 3" Dia., Gear, 10/Pkg.	18	30-750-01K	Sensor, Heater	16
27-005-01K	Clamp, 7/16"ID, Gear, 10/Pkg.	4	30-751-01K	Sensor, Evaporator Temp	16
27-015-02K	Hose, 3/4" ID, Silicone, 50 ft./Pkg.	5, 22	30-752-00K	Receptacle c/w Harness	14
27-018-01K	Clamp, Exhaust Pipe, 1-1/2"	7	30-753-01K	Harness, Receptacle	14
27-032-01K	FTG 3/4 BARB X 1/2NPTM	22	30-757-01K	Harness, Condenser Fan	17
27-052-50K	Clamp, 2.5" Dia. Gear, 10/Pkg.	10	30-759-00K	Heating Unit c/w Wiring	15

NUMERIC PARTS INDEX

PART#	DESCRIPTION	PAGE#	PART#	DESCRIPTION	PAGE#
30-759-04K	Thermal Fuse Kit	15	55-814-01K	Capacitor, Compressor Run R134A 35MFD	16
30-760-01K	Bracket, Exhaust Pipe Support	7	55-815-01K	Relay, Potential	16
30-761-05K	Washer, Frame	1	55-816-01K	Evaporator Coil, Complete	15
30-768-00K	Buzzer c/w Fasteners	20	55-817-01K	Valve, TX CCU	17
30-780-01K	Blower Fan c/w Wiring	15	55-831-01K	Dryer	17
30-781-05K	Mounting Hardware, Compressor c/w 3 sets of Washers, Nuts, Bolts and Shock Mounts	15	55-832-01K	Bracket, Dryer	17
30-793-00K	APU Mounting Kit	1	55-833-01K	Filter Screen, Air Inlet	15
30-793-01K	Gripper, Frame	1	55-850-01K	Harness, Pressure Switch	15
30-795-10K	Fuel Pickup, 3/16" and 5/16"	21	55-851-01K	Switch, Binary R-134A	15
30-796-02K	Gasket, Fuel Pickup, 10/Pkg.	21	55-880-01K	Condenser Assembly	17
30-799-01K	Bracket, Radiator	5	55-881-01K	Condenser Coil	17
30-800-01K	Mount, Air Filter Assembly	8	55-882-01K	Bracket, Condenser Mount	17
30-806-03K	Cable, Battery, Dual c/w Ring Terminals and Loom	19	55-884-01K	Housing, Condenser Coil	17
30-836-01K	Grill, Return Air, 2/Pkg.	18	75-518-01K	Y Connector	22
30-845-15K	Air Intake Cover, Rear Inlet	1	89-403-01K	FTG 1/2NPTM X 1 Nipple	22
30-846-01K	Cover, Receptacle, 115 VAC	14	96-050-01K	Clamp, 1-1/4" Dia., Screw, 10/Pkg.	5
30-848-01K	APU Control Cable Converter	20	96-051-01K	Hose, Water Pump Inlet	5
30-853-01K	Spacer, 1" x 2" x 15-1/2"	19	96-101-04K	Gasket, Valve Cover T2	6
30-857-05K	Tensioner Kit	9	96-101-20K	Engine, ComfortPro	2
30-863-00K	Mounting Kit, 2" Offset c/w Mounting Hardware	19	96-101-21K	Alternator, 60 Amp DC	11
30-865-01K	Spacer, M6 x 5mm	5	96-101-22K	Starter, Engine c/w Solenoid	11
30-867-00K	Remote Temp Sensor Kit	13	96-101-24K	Filter, Fuel	3
30-867-05K	Extended Temp Sensor	13	96-101-25K	Valve, Check, Fuel	3
30-868-01K	Duckbill, CCU Drain	15	96-101-27K	Dipstick, Oil	6
30-877-02K	Shim, Generator, 10/Pkg.	9	96-101-28K	Manifold, Inlet	8
30-882-05K	Bracket, Capacitor	10	96-101-33K	Filter, Oil, 6/Pkg.	6
30-914-01K	Bracket, Fuel Filter	3	96-111-03K	Spacer, Alternator, 1/Pkg.	11
30-931-01K	Hose, Air Intake, Upper	8	96-153-01K	Solenoid, Fuel, Shut-Off	3
30-937-01K	Hose, Fuel Return c/w Clamps	3	96-153-02K	O-Ring, Solenoid	3
30-937-03K	Hose, Fuel 5/16 c/w Loom & Clamps	3	96-153-03K	Bolt, HHSC	3
30-937-04K	Hose, Fuel Inlet c/w Clamps	3	96-153-04K	Washer, Lock	3
30-937-05K	Hose, Fuel, In-line Filter to Pump c/w Clamps	3	96-416-01K	Gasket, Exhaust Header Pipe	7
30-937-06K	Hose, Fuel, Return to Check Valve c/w Clamps	3	96-555-01K	Bolt, Hex Head, M6 x 1mm x 10mm, 10/Pkg.	4
30-940-01K	Clamp, P .50" x .531 Hole, 10/Pkg.	3	96-937-00K	Glow Plug	11
30-954-41K	Fan Shroud	4	96-937-01K	Jumper Plate, Glow Plug c/w Fasteners	11
30-957-00K	Battery Terminal Kit	19	96-943-00K	Injector c/w Gasket & Heat Seal	3
30-961-01K	Strain Relief, 0.6" x 1.15"	15	96-943-01K	Gasket, Injector, 1/Pkg.	3
40-203-01K	Capacitor, 25 MFD	16	96-943-02K	Heat Seal, Injector, 1/Pkg.	3
40-203-20K	Capacitor, 25 MFD	10	96-949-00K	Sensor, Oil Pressure	6
40-304-01K	Belt, Generator	9	96-950-21K	Fuel Filter Head Assembly	3
55-060-00K	Shraeder Valve and Caps	15	96-952-05K	Plug, Oil Filler c/w O-Ring	6
55-075-01K	Shraeder Caps, Large, 50/Pkg.	15	96-952-06K	O-Ring, Oil Filler Plug 10/Pkg	6
55-090-01K	Shraeder Caps, Small, 50/Pkg.	15	96-967-00K	Pipe, Water Return	4
55-121-07K	Breaker, A/C Compressor	15	96-969-03K	Belt, Alternator/Fan/Water Pump	4
55-121-08K	Gasket, A/C Compressor	15	96-969-04K	Pulley, Fan	4
55-146-01K	Diffusers, 3"	18	96-969-05K	Spacer, Fan	4
55-146-06K	Diffuser, 3", 60 Degrees	18	96-971-01K	Gasket, Manifold, Inlet, Kubota	8
55-190-01K	Screw, Self Tapping, #10 x 1", 10/Pkg.	15	96-974-01K	Nut, M8 x 1.25mm, 10/Pkg.	7
55-216-01K	Outlet Cover, CCU, 10/Pkg.	18	96-975-01K	Washer, M8 Flat, 10/Pkg.	7
55-220-03K	O-Ring, A/C, 10/Pkg.	17	PG1000	Shore Power Module	26
55-220-60K	Hose, A/C Discharge	17	PG1004	APU Display Stand	26
55-220-70K	Hose, A/C Liquid	17	PG1006	Programmer Control S/W	26
55-220-80K	Hose, Liq Cond, Dryer	17	PG1008	Test Switch Module	25
55-318-01K	Hose, Ducting, 3", 30 ft.	18	PG1011	APU Control Extended Harness Kit	26
55-352-01K	Fan, Condenser	17	PG1014	Wall Mount Duct	26
55-677-50K	Controls, CCU	15, 16	PG1016	Wall Mount Duct Extension	26
55-689-05K	Enclosure, CCU, Main	15	PG1022	Engine Interlock Kit	26
55-699-01K	Ring, Outlet, 3"	18	PG1023	Condenser Winter Cover, Large	26
55-800-01K	Evaporator/Heat Unit, Complete	15	PK0315	Duct Kit	18
55-810-01K	Compressor, Complete	15	TK9002	Flow Indicator	25
55-812-01K	Bracket, Capacitor, CCU, Foam	16			
55-813-01K	Capacitor, Start 134A Compressor	16			

North America
Carrier Transicold
700 Olympic Drive
Athens, GA 30601 USA
Tel: 1-706-546-6469
Fax: 1-706-546-5207

**Mexico and
Central America**
Ejercito Nacional No.418
Piso 9, Torre Yumal
Col. Chapultepec Morales
11570 Mexico, D.F.
Tel: (5255) 9126.0300
Fax: (5255) 9126.0373



Carrier

A United Technologies Company

Carrier Transicold Division,
Carrier Corporation
Truck/Trailer Products Group
P.O. Box 4805
Syracuse, N.Y. 13221 U.S.A.

www.carrier.transicold.com



A member of the United Technologies Corporation family. Stock symbol UTX
©2006 Carrier Corporation • Printed in U.S.A. 0906