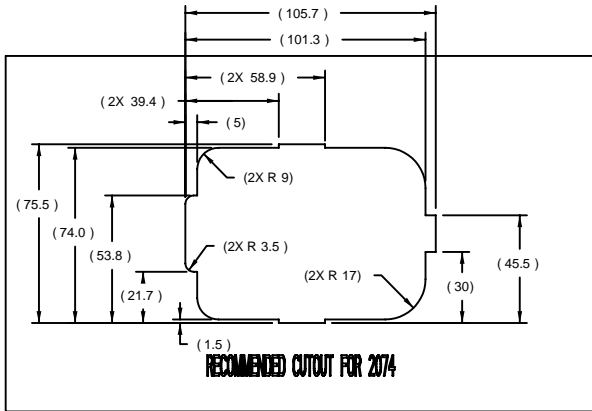
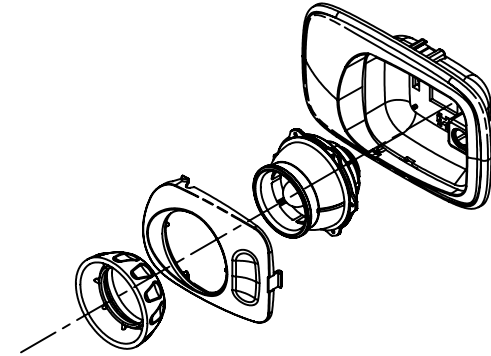
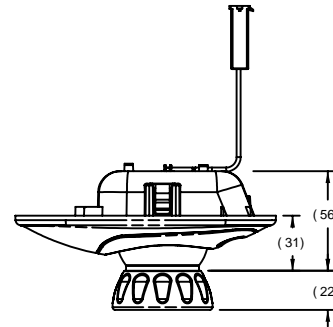


NOTES:

- 1) DRAWING DEFINES REQUIREMENTS FOR LAMP, BUNK SPOT
- 2) APPROVED SUPPLIER GRAKON
- 3) LAMP SHALL BE INTERCHANGEABLE WITH KENWORTH PN P54-1016-3 EXCEPT AS
- 4) LAMP HOUSING PRIMARY MATERIAL: POLYCARBONATE PLASTIC
- 5) LAMP HOUSING PRIMARY COLOR: STANDARD COLOR MATCHED TO SOFT TOUCH PAINTCOLORS DEFINED IN 20-25331 (SEE TABLE)
COLOR TO BE DETERMINED, ALTERNATE COLOR AS LOW VOLUME OPTION, (SEE PART NUMBER TABLE)
- 6) HOUSING MOUNTING: SPRING CLIP SNAP IN (MOUNTING THICKNESS RANGE TO BE 2.5 TO 5.4mm)
- 7) CONNECTOR TYPE: MOLEX MALE 43680-2002 PETERBILT PN 16-09064-002
- 8) WIRE TYPE: 16-04446 18 GA SXL WIRE
- 9) GROUND WIRE COLOR: BLACK - APPROVED EXCEPTION TO PETERBILT MPS 1600.002
- 10) CIRCUIT NUMBERS 4-WIRE STRIP: NONE - APPROVED EXCEPTION TO PETERBILT MPS 1600.002
- 11) POWER WIRE COLOR: WHITE - APPROVED EXCEPTION TO PETERBILT MPS 1600.002
- 12) WIRE PIGTAIL LENGTH: 200 MM ± 25MM (MEASURED FROM THE BASE OF LAMP TO THE END OF CONNECTOR)
- 13) LAMP PRIMARY LENS MATERIAL: LEXAN
- 14) LAMP LENS COLOR: TEXTURED CLEAR
- 15) LAMP LENS TYPE: SWIVEL BALL MOUNTED
- 16) LAMP BULB TYPE: 912 SYLVANIA OR GE QUANTITY 1
- 17) APPLICABLE PETERBILT STANDARDS (EXCEPT AS NOTED ABOVE):
MPS 1600.002 WIRING HARNESS SPECIFICATION
MPS 9703.004 HANDLING AND MARKING OF FLAMMABLE INTERIOR MATERIALS
- 18) APPLICABLE SAE AND FEDERAL STANDARDS (EXCEPT AS NOTED ABOVE):
FMVSS 302 FLAMMABILITY
- 19) CONNECTOR PIN OUT

PIN 1	POWER	WHITE
PIN 2	GROUND	BLACK

PART NUMBER TABLE			
NUMBER	COLOR	SUPPLIER PN	ENGINEERING CLASS
-222	TAUPE	2074B	PRODUCTION
-221	GRAY	2074G	PRODUCTION
-201	BLACK	2074	SERVICED



SCALE 1:1

