

DBL MODULE CONNECTOR

TERM	CRT	TERM	CRT
A	298 B	E	BLANK
B	41 E	F	42 J
C	29 F	G	239 IM
D	242 L	H	328 B

LIGHTBAR (P1)

PIN	CRT	PIN	CRT
1	NOT USED	9	SPARE
2	305 C	10	ABS2 B
3	SPARE	11	242 K
4	BLANK	12	SPARE
5	106 D	13	ABS1 B
6	EE24 B	14	SPARE
7	192 B	15	302 E
8	285 D	16	228 D

LIGHTBAR (P1)

PIN	CRT	PIN	CRT
1	227 C	10	220 B
2	TEST	11	249 J
3	TEST	12	EE27 B
4	739 B	13	132 D
5	42 E	14	SPARE
6	EE10 B	15	SPARE
7	SPARE	16	SPARE
8	145 B	17	SPARE
9	239 V	18	B21 B

A PANEL CONNECTOR

TERM	CRT
1	242 G
2	280 F
3	226 T
4	253 J
5	380 E
6	282 D
7	239 J
8	BLANK
9	BLANK

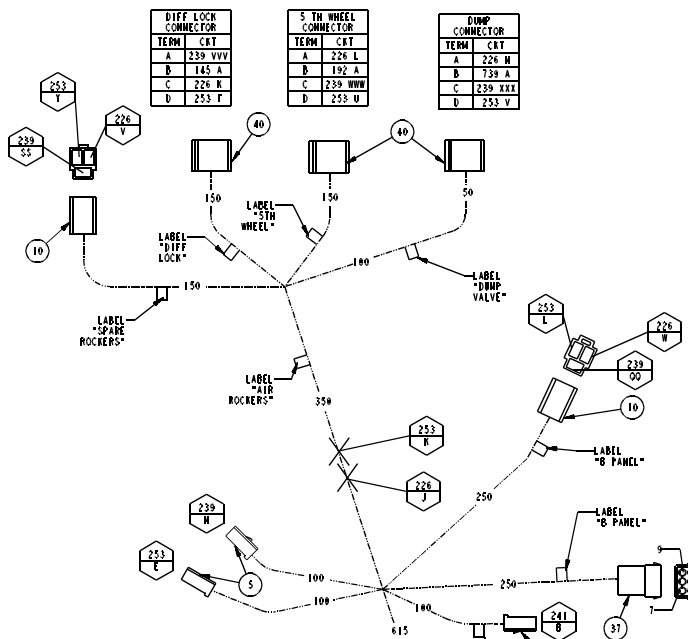
- NOTES:**
- 1) SHEET 1, 3, AND 4 FOR REMAINDER OF HARNESS
 - 2) SHEET 5 FOR HARNESS LAYOUT
 - 3) ADDITIONAL NOTES ON SHEETS 5 AND 8.
 - 4) CIRCUIT TABLES ON SHEET 6, AND 7
 - 5) SHEET 9 FOR BILL OF MATERIAL.
 - 6) ORIENT DIODES AS SHOWN. DIODES (1) TO BE ROUTED WITH CNFS TO CONNECTOR "P1". DIMENSIONS SHOWN IN PARENTHESES ARE FOR REFERENCE ONLY. USE UVAL WALL HEAT SHRINK ON BOTH DIODES.
 - 7) HARNESS TO BE SHIPPED WITH ITEMS 39 AND 48 CONNECTED.

HARNESS - MAIN CAB

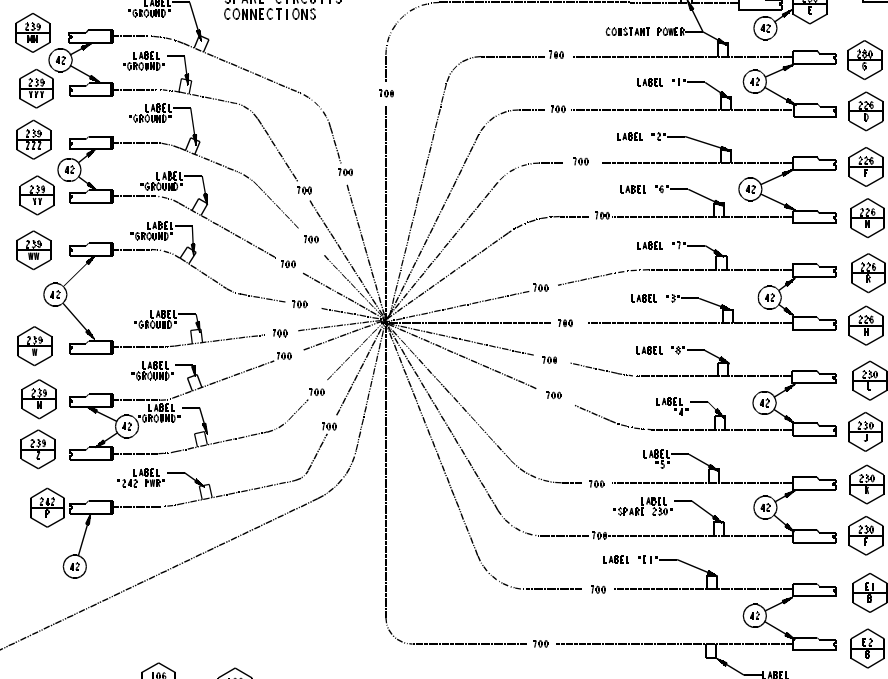
16-10147-000 REV. A

DATE: 8/11 SHEET 2

AIR ROCKER CONNECTIONS



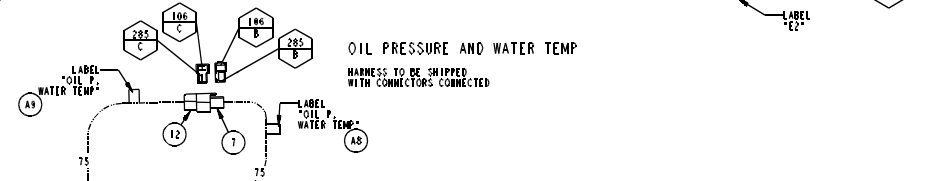
SPARE CIRCUITS CONNECTIONS



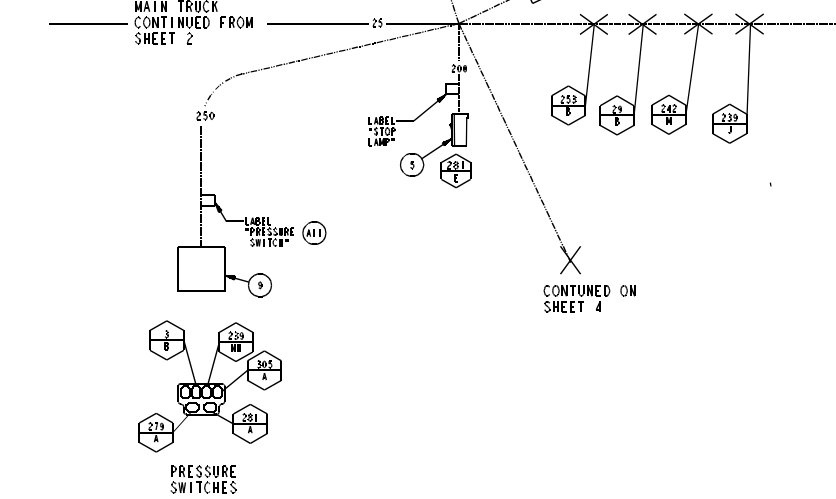
B PANEL CONNECTIONS

B PANEL HARNESS CONNECTOR CAP	
TERM	CRT
1	253 D
2	14 B
3	35 B
4	239 E
5	BLANK
6	36 B
7	242 H
8	BLANK
9	59 B

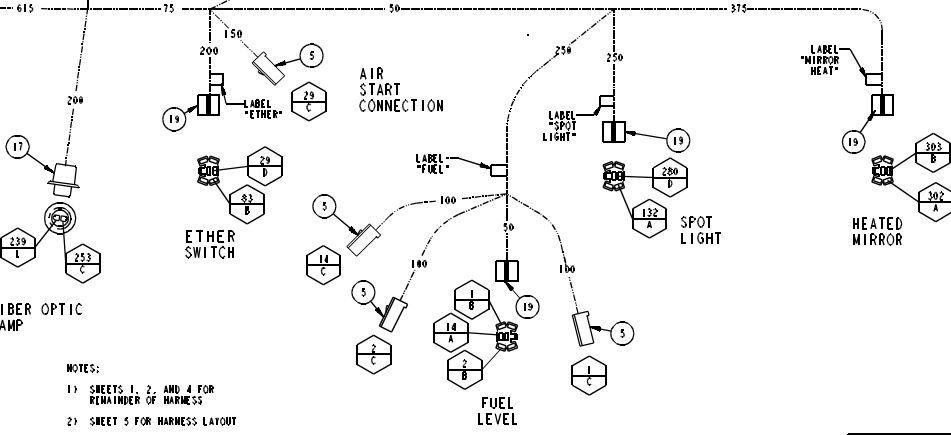
OIL PRESSURE AND WATER TEMP HARNESS TO BE SHIPPED WITH CONNECTORS CONNECTED



MAIN TRUCK CONTINUED FROM SHEET 2




AIR START CONNECTION



FIBER OPTIC LAMP

- NOTES:
- 1) SHEETS 1, 2, AND 4 FOR REMAINDER OF HARNESS
 - 2) SHEET 5 FOR HARNESS LAYOUT
 - 3) ADDITIONAL NOTES ON SHEETS 5 AND 8.
 - 4) CIRCUIT TABLES ON SHEET 6, AND 7
 - 5) SHEET 9 FOR BILL OF MATERIAL.


HARNESS-MAIN CAB
 16-10147-000
 REV: A
 SHEET 2 OF 9

ACC POWER OUTLET CONNECTIONS

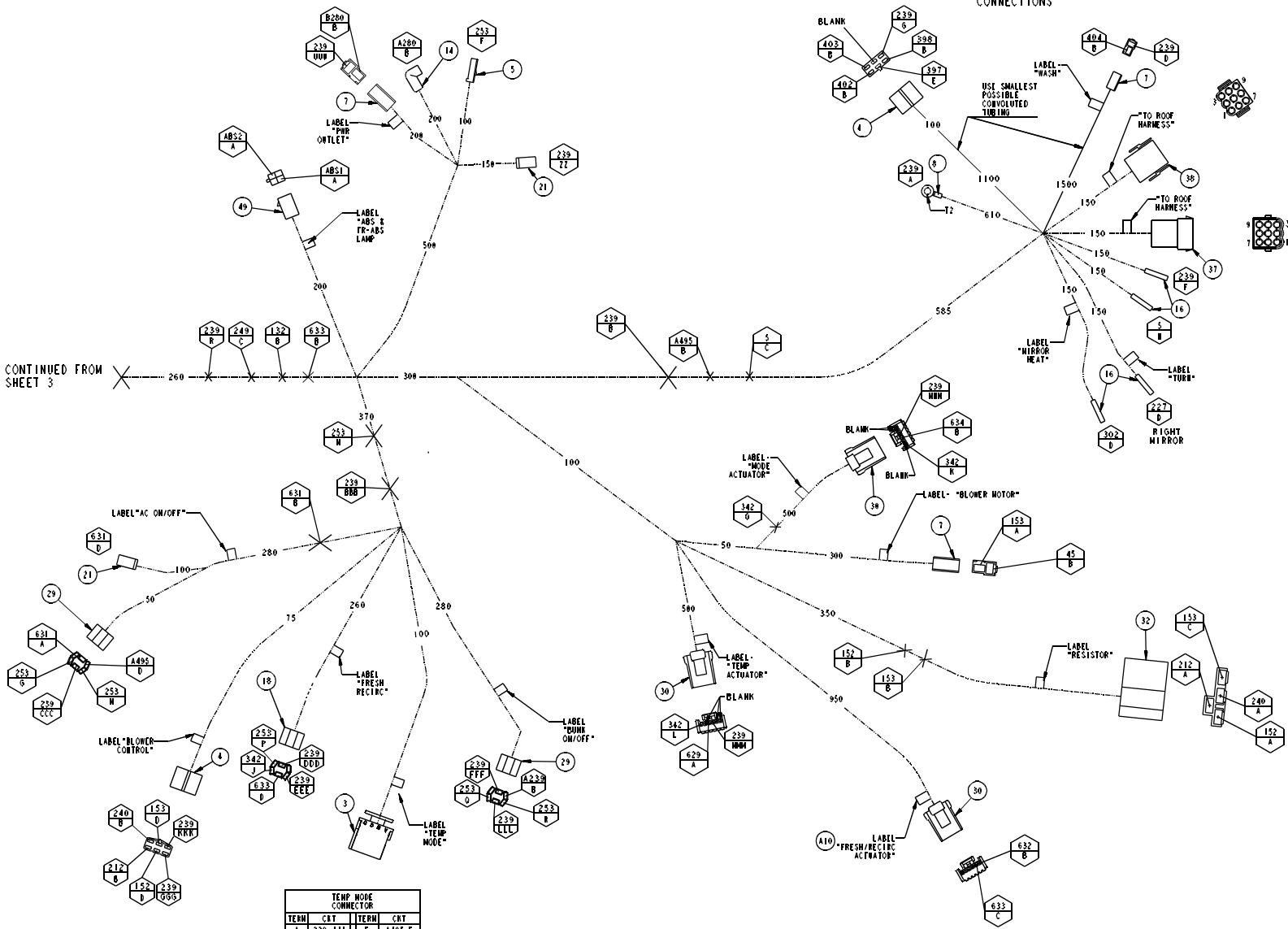
ELECTRIC WASHER CONNECTIONS

ROOF HARNESS CONNECTOR PLUS TERM CRT

1	5 G
2	248 C
3	429 B
4	239 E
5	348 B
6	B239 B
7	329 A
8	132 C
9	19 B

ROOF HARNESS CONNECTOR CMP TERM CRT

1	249 D
2	A495 A
3	254 B
4	229 B
5	A252 B
6	A429 B
7	B429 B
8	C429 B
9	226 U



CONTINUED FROM SHEET 3

TEMP MODE CONNECTOR

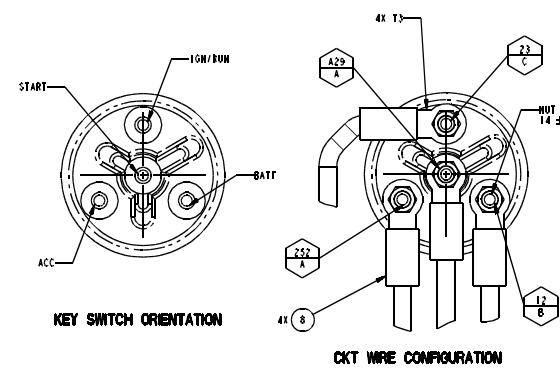
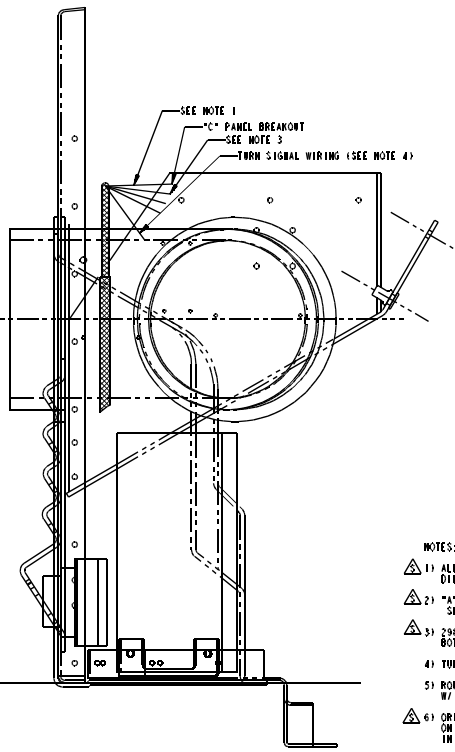
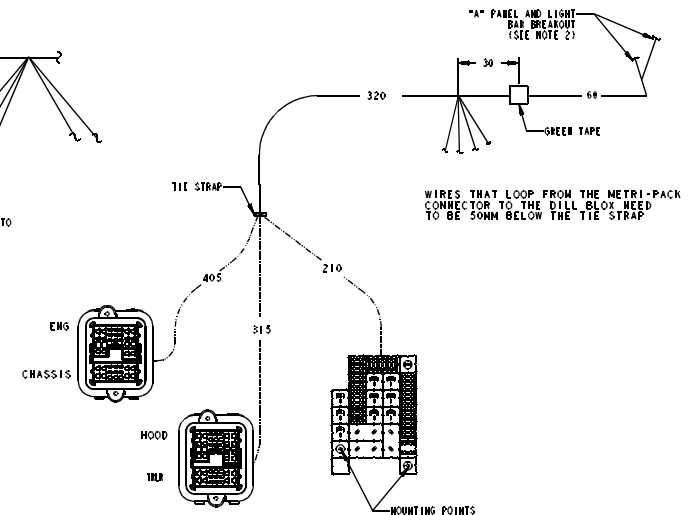
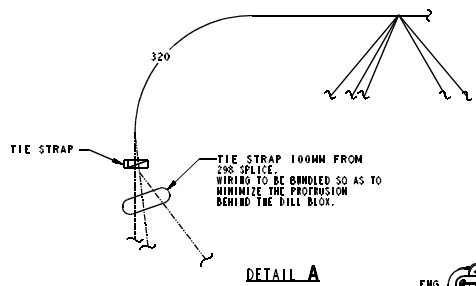
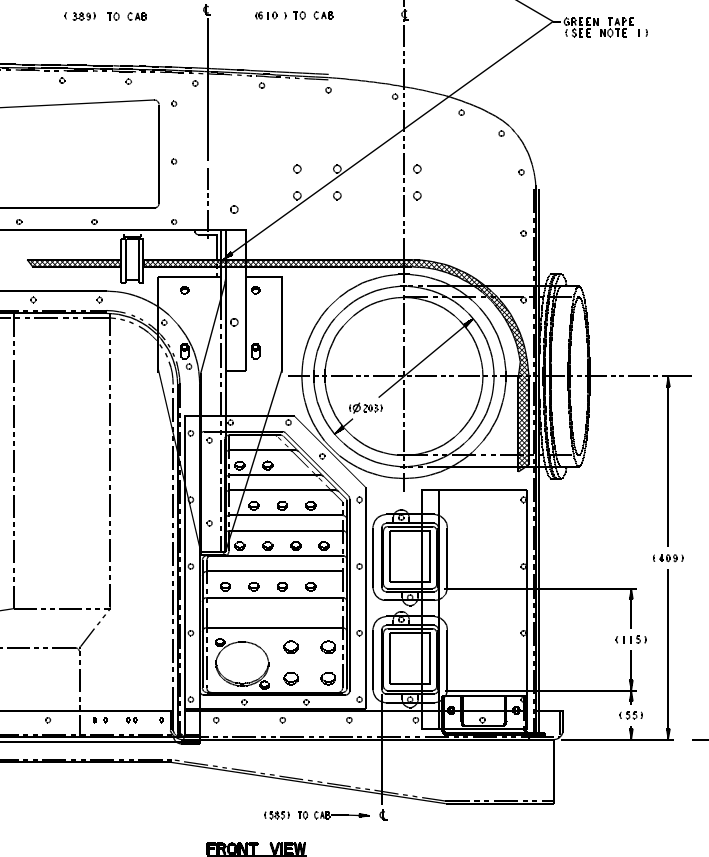
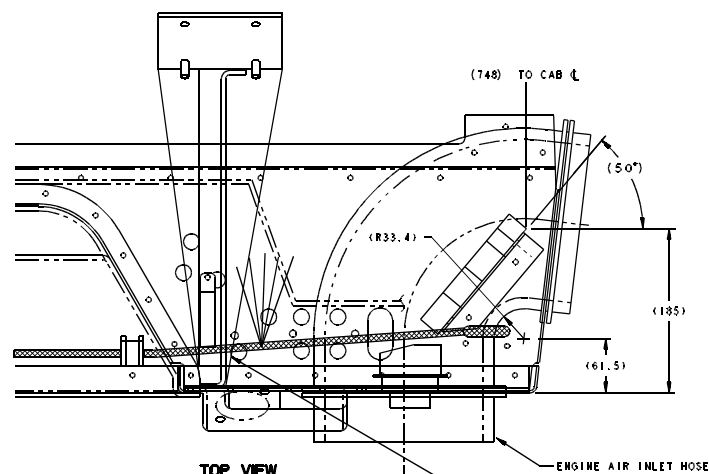
TERM	CRT	TERM	CRT
A	239 JJJ	E	A495 E
B	629 B	F	631 C
C	634 A	G	253 S
D	342 W	H	239 HHH

- NOTES:
- 1) SHEET 1, 2 AND 3 FOR REMAINDER OF HARNESS
 - 2) SHEET 5 FOR HARNESS LAYOUT
 - 3) ADDITIONAL NOTES ON SHEET 5 AND 8
 - 4) CIRCUIT TABLES ON SHEETS 6, AND 7
 - 5) SHEET 9 FOR BILL OF MATERIALS.

Radco
A DIVISION OF BUSHNELL

PROPERTY OF RADCO
ALL RIGHTS RESERVED
NO PARTS TO BE REPRODUCED OR TRANSMITTED IN ANY FORM OR BY ANY MEANS, ELECTRONIC OR MECHANICAL, INCLUDING PHOTOCOPYING, RECORDING, OR BY ANY INFORMATION STORAGE AND RETRIEVAL SYSTEM.

DATE: 16-10147-000
REV: A
SHEET 4



DETAIL C
SCALE: 2:1
(SEE NOTE 6)

- NOTES:
- 1) ALL BREAKOUTS BETWEEN GREEN TAPE AND DILL BLOC SHOULD BE ORIENTED AS SHOWN.
 - 2) "A" PANEL AND "LIGHT BAR" BREAKOUTS SHOULD BE TOP MOST BREAKOUT
 - 3) 298 MAIN CAB POWER WIRE SHOULD BE BOTTOM WIRE WITHIN ITS BREAKOUT
 - 4) TURN SIGNAL WIRING SHOULD POINT DOWN
 - 5) ROUTE WIRING FOR MINIMAL INTERFERENCE BY INTAKE ELBOW
 - 6) ORIENT IGNITION SWITCH WITH IGN/RUN POST ON TOP POSITION. ROUTE WIRES AS SHOWN IN DETAIL C.

		TITLE HARNISS-MAIN CAB	
PROJECT NO. 16-10147-000	DRAWING NO. 16-10147-000	REV. A	SHEET NO. 5
SCALE: 5:1		SHEET 5	

CRT	GA	WIRE	LOC	LOC	FUNCTION
253 AB	18	16-84762	A	B	INSTRUMENT LP CONTROL TO SPLICE
253 BC	18	16-84762	B	C	SPLICE TO FIBER OPTIC LP
253 BH	18	16-84762	B	H	SPLICE TO C PANEL SUPPLY
253 BJ	18	16-84762	B	J	SPLICE TO A PANEL
253 BK	18	16-84762	B	K	SPLICE TO SPLICE
253 BM	18	16-84762	B	M	SPLICE TO SPLICE
253 BD	18	16-84762	K	D	SPLICE TO B PANEL
253 BE	18	16-84762	K	E	SPLICE TO SPARE
253 BL	18	16-84762	K	L	SPLICE TO B PANEL
253 BT	18	16-84762	K	T	SPLICE TO DIFF LOCK ROCKER SW
253 BU	18	16-84762	K	U	SPLICE TO STN WHEEL RNR SW
253 BV	18	16-84762	K	V	SPLICE TO DUMP VLV RNR SW
253 BY	18	16-84762	K	Y	SPLICE TO SPARE RNR COBN
253 MF	18	16-84762	M	F	SPLICE TO LIGHTER
253 MG	18	16-84762	M	G	SPLICE TO A/C ON/OFF SW
253 MH	18	16-84762	M	H	SPLICE TO A/C ON/OFF SW
253 MP	18	16-84762	M	P	SPLICE TO FRESH/RECIRC SW
253 MQ	18	16-84762	M	Q	SPLICE TO BUNK ON/OFF SW
253 MR	18	16-84762	M	R	SPLICE TO BUNK ON/OFF SW
253 MS	18	16-84762	M	S	SPLICE TO TEMP/MODE COBN
254 AB	14	16-86017	A	B	AD LP SW TO ROOF
279 AB	10	16-87064	A	B	TRAILER BRAKE SW TO TRAILER
280 AB	14	16-86017	A	B	UNSWITCHED POWER-FUSE TO SPLICE
280 BC	14	16-86017	B	C	SPLICE TO AN/LOAD LP SWITCH
280 BD	14	16-86017	B	D	SPLICE TO SPOT LP SWITCH
280 BE	14	16-86017	B	E	SPLICE TO SPARE
280 BF	14	16-86017	B	F	SPLICE TO A PANEL
280 BG	14	16-86017	B	G	SPLICE TO SPARE
A280 AB	14	16-86017	A	B	UNSWITCHED PWR TO CIGAR LIGHTER
B280 AB	14	16-86017	A	B	UNSWITCHED PWR TO ACC PWR OUTLET
281 AB	12	16-85749	A	B	BRAKE LP SW TO SPLICE
281 BC	12	16-85749	B	C	BRAKE LP SPLICE TO CHASSIS
281 BD	12	16-85749	B	D	BRAKE LP SPLICE TO TURN SIGNAL SW
281 BE	16	16-84783	B	E	BRAKE LP SPLICE TO ABS ECU
281 BF	12	16-85749	B	F	BRAKE LP SPLICE TO ELEC ENGINE
282 AB	18	16-84762	A	B	ENGINE OIL TEMP-ENGINE TO A PANEL
283 AB	18	16-84762	A	B	HORN-BUTTON TO RELAY
285 AB	20	16-87872	A	B	ENGINE WATER TEMP-ENGINE TO JUMPER
285 CD	20	16-87872	C	D	JUMPER TO LIGHT BAR
298 AB	4	16-84452	A	B	MAIN CAB POWER TO SPLICE
298 BC	6	16-84452	B	C	SPLICE TO MAIN RELAY
298 BD	6	16-84452	B	D	SPLICE TO SPLICE
298 DG	8	16-87277	D	G	SPLICE TO BUS BAR
298 DH	8	16-87277	D	H	SPLICE TO BUS BAR
298 DL	12	16-85749	D	L	SPLICE TO IGN SW CIRCUIT BREAKER
298 DK	10	16-87064	D	K	SPLICE TO TAIL PL CIRCUIT BREAKER
298 DP	6	16-84452	D	P	SPLICE TO SPLICE
298 PR	8	16-87277	P	R	SPLICE TO BUSBAR
298 PS	8	16-87277	P	S	SPLICE TO BUSBAR
298 PT	10	16-87064	P	T	SPLICE TO STOP LP CIRCUIT BREAKER
A298 AB	12	16-85749	A	B	UNSWITCHED POWER TO HD LT COBN
B298 AB	14	16-86017	A	B	FRSE TO DRL MODULE
302 AB	14	16-86017	A	B	HEATED MIRROR SW TO SPLICE
302 BD	14	16-86017	B	D	SPLICE TO RIGHT MIRROR
302 BE	16	16-84783	B	E	SPLICE TO LIGHT BAR
302 BF	14	16-86017	B	F	SPLICE TO LEFT MIRROR
303 AB	14	16-86017	A	B	MIRROR HEAT FUSE TO SWITCH
304 AB	6	16-84452	A	B	SWITCHED POWER-RELAY TO SPLICE
304 BD	8	16-87277	B	D	SPLICE TO BALL BLOW BUS BAR
304 BE	8	16-87277	B	E	SPLICE TO BUS BAR
305 AD	20	16-87872	A	D	LOW AIR-PRESSURE SW TO SPLICE
305 BD	20	16-87872	B	D	PRESS SW TO SPLICE
305 CD	20	16-87872	C	D	LP TO SPLICE
328 AB	16	16-84783	A	B	PARK BRAKE SW TO DRL MODULE
329 AB	16	16-84783	A	B	DOOR SW-ROOF TO BLOW LP

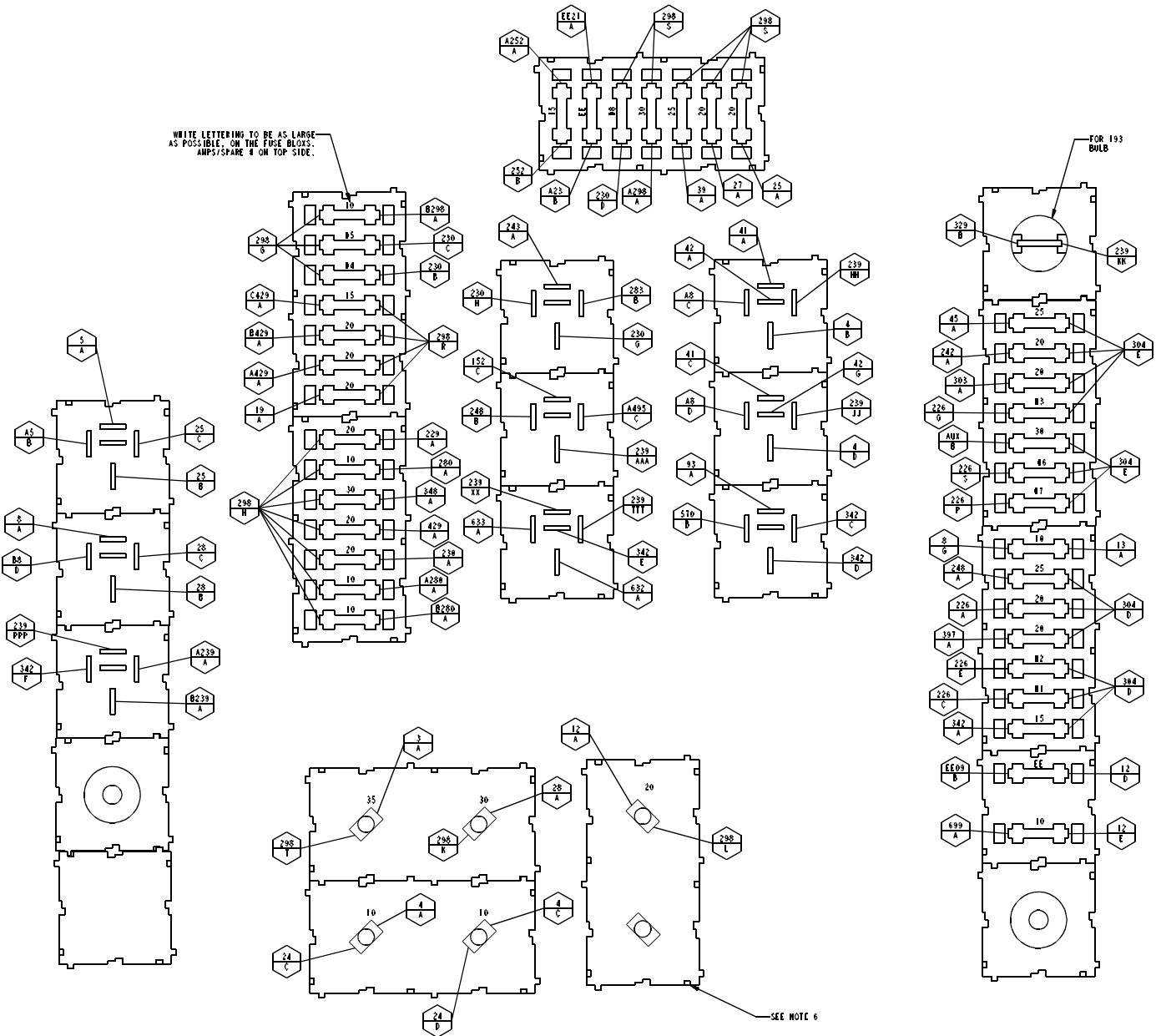
CRT	GA	WIRE	LOC	LOC	FUNCTION
342 AB	12	16-85749	A	B	A/C-FUSE TO SPLICE
342 BC	16	16-84783	B	C	A/C-SPLC TO CPRSR CLUTCH RELAY
342 BD	14	16-86017	B	D	A/C-SPLC TO CPRSR CLUTCH RELAY
342 BE	16	16-84783	B	E	A/C-SPLC TO CPRSR CLUTCH RELAY
342 BF	16	16-84783	B	F	A/C-SPLICE TO BUNK RELAY
342 BG	14	16-86017	B	G	A/C-SPLICE TO SPLICE
342 GH	16	16-84783	G	H	A/C-SPLICE TO TEMP/MODE SW
342 GJ	16	16-84783	G	J	A/C-SPLICE TO FRESH/RECIRC SW
342 GK	18	16-84762	G	K	A/C-SPLICE TO MODE ACTUATOR
342 GL	18	16-84762	G	L	A/C-SPLICE TO TEMP ACTUATOR
348 AB	12	16-85749	A	B	CB RADIO-FUSE TO ROOF
380 AB	18	16-84762	A	B	ELEC WATER TEMP-ENGINE TO A PANEL
397 AB	14	16-86017	A	B	ELEC WIPER-FUSE TO SPLICE
397 BC	14	16-86017	B	C	SPLICE TO CONTROL
397 BE	14	16-86017	B	E	SPLICE TO MOTOR
397 CD	14	16-86017	C	D	CONTROL TO CONTROL
398 AB	14	16-86017	A	B	CONTROL TO MOTOR-HIGH
402 AB	14	16-86017	A	A	CONTROL TO MOTOR-LOW
403 AB	14	16-86017	A	A	CONTROL TO MOTOR-PARK
404 AB	14	16-86017	A	B	WIPER CONTROL TO WASHER
417 AB	18	16-84762 SPL DUCT 2	A	B	J1587 (+) COBN TO SPLICE
417 BC	18	16-84762 SPL DUCT 2	B	C	J1587 (+) SPLICE TO J1939 HARN COBN
417 BD	14	16-86017	B	D	J1587 (+) SPLICE TO DIAGNOSTIC COBN
418 AB	18	16-84762 SPL DUCT 2	A	B	J1587 (-) COBN TO SPLICE
418 BC	18	16-84762 SPL DUCT 2	B	C	J1587 (-) SPLICE TO J1939 HARN COBN
418BD	14	16-86017	B	D	J1587 (-) SPLICE TO DIAGNOSTIC COBN
429 AB	14	16-86017	A	B	UNSWITCHED SLEEPER PWR-FUSE TO ROOF
A429 AB	10	16-87064	A	B	UNSWITCHED PWR-FUSE TO ROOF
B429 AB	10	16-87064	A	B	UNSWITCHED PWR-FUSE TO ROOF
C429 AB	14	16-86017	A	B	UNSWITCHED PWR-FUSE TO ROOF
A495 AB	14	16-86017	A	B	BUNK ENABLE-SPLICE TO ROOF HARNESS
A495 BD	14	16-86017	B	D	BUNK ENABLE-SPLICE TO A/C ON/OFF SW
A495 BE	14	16-86017	B	E	BUNK ENABLE-SPLICE TO TEMP/MODE COBN
A495 BG	14	16-86017	B	G	SPLICE TO SPLICE
A495 GC	14	16-86017	G	C	BUNK ENABLE-SPLICE TO CIL RELAY
A495 GF	14	16-86017	G	F	BUNK ENABLE-SPLICE TO HOOD HARNESS
570 AB	14	16-86017	A	B	CPRSR ENABLE-HOOD HARNESS TO CPRSR RLY
598 AB	16	16-84783	A	B	ENGINE TO INLET AIR HEATER
629 AB	18	18-84762	A	B	TEMP ACT SIG-TEMP ACT TO TEMP MDL
631 AB	14	16-86017	A	B	BLOWER GND SIG-A/C SW TO SPLICE
631 BC	14	16-86017	B	C	BLOWER GND SIG-SPLICE TO TEMP MDL SW
631 BD	14	16-86017	B	D	BLOWER GND SIG-SPLICE TO BLOWER SW
632 AB	18	18-84762	A	B	FRESH/RECIRC CONT 1-RELAY TO ACT
633 AB	16	16-84783	A	B	FRESH/RECIRC CONT 2-RELAY TO SPLC
633 BC	18	16-84762	B	C	FRESH/RECIRC CONT 2-SPLICE TO ACT
633 BD	16	16-84783	B	D	FRESH/RECIRC CONT 2-SPLICE TO FR SW
634 AB	18	18-84762	A	B	TEMP MODE COBN TO ACTUATOR
699 AB	14	16-86017	A	B	DIAGNOSTIC POWER - FUSE TO SPLICE
699 BC	14	16-86017	B	C	SPLICE TO J1939 DIAGNOSTIC HARNESS
699 BD	14	16-86017	B	D	SPLICE TO J1587 DIAGNOSTIC COBN
739 AB	16	16-84783	A	B	SPNSW DUMP SW TO LTBAR
EE89 AB	16	16-84783	A	B	ECM POWER-FUSE TO ELEC ENGINE HARN
EE10 AB	20	16-87872	A	B	STOP ENG LIGHT ELEC ENG TO LIGHT BAR
EE21 AB	16	16-84762	A	B	ECM SWITCHED PWR - FUSE TO ELEC ENG HARN
EE24 AB	20	16-87872	A	B	CHECK ENG LIGHT ELEC ENG TO LIGHT BAR
EE 27 AB	20	16-87872	A	B	CRUISE ON LIGHT ELEC ENG TO LIGHT BAR
AB51 AB	18	16-84762	A	B	ABS LAMP COBN TO LIGHT BAR
AB52 AB	18	16-84762	A	B	TR-ABS LAMP COBN TO LIGHT BAR

NOTE:
1) CHART CONTINUED FROM SHEET 6

16-10147-000 HARNESS-MAIN CAB
REV: A
DATE: 16-10147-000
SHEET 7

WRITE LETTERING TO BE AS LARGE AS POSSIBLE ON THE FUSE BLOCKS. AMP/SPARE # ON TOP SIDE.

FOR 193 BULB



- NOTES:
- 1) USE SHEET 5 OF THIS DRAWING TO PROVIDE ACCURATE POSITIONING AND CABLE LENGTH FOR THE DILL BLOCK AND FEED-THROUGH
 - 2) ASSEMBLE PER PETERBILT NPS 1600-002
 - 3) STRAP MATERIAL TO BE BLACK UV NYLON
 - 4) LABELS MAY BE FIXED TO A SINGLE WIRE IN A GROUP
 - 5) SOLID LINES INDICATE TO USE THE STRAPS EVERY 150-200MM OR WHERE INDICATED. USE SPOT TAPE ON ALL OTHER LOCATIONS EVERY 150-200MM.
 - 6) USE DOUBLE WALL HEAT SHRINK, ITEM 11 (10 PLCS) ON CIRCUIT BREAKER EYELET TERMINATIONS.
 - 7) TERMINALS ARE TO BE SELECTED USING SK20129
 USE TERMINAL CODE 12 OR 11
 ITEM 11 USE TERMINAL CODE 12 - 1/4
 ITEM 12 USE TERMINAL CODE 12 - 3/8
 ITEM 13 USE TERMINAL CODE 12 - #10

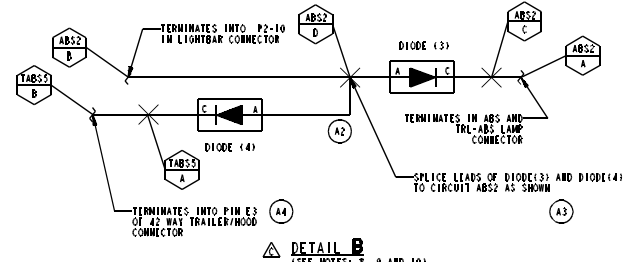
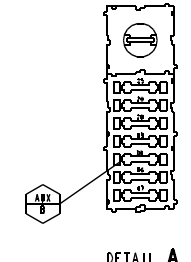
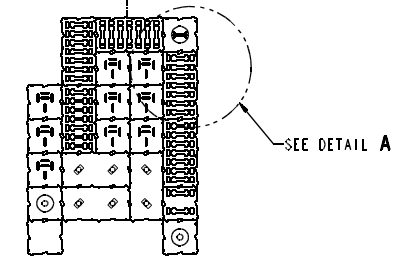
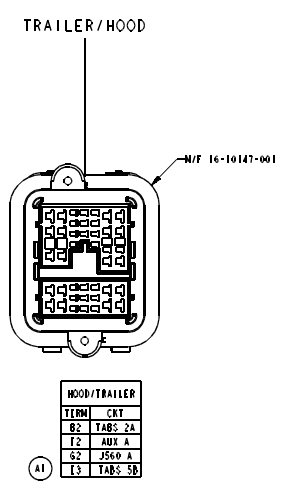
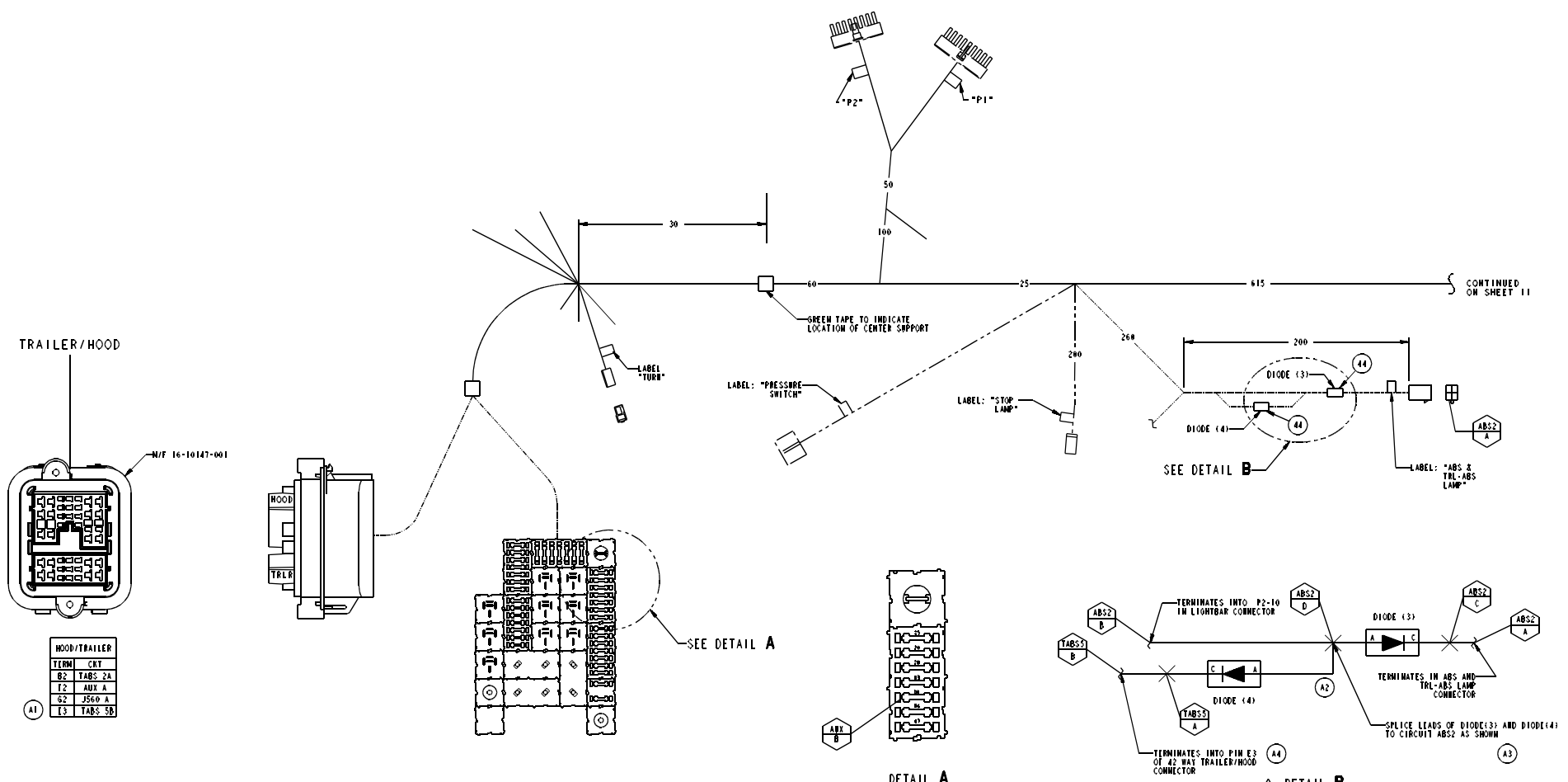
VIEW B

SEE NOTE 6

		TITLE HARNNESS-MAIN CAB	
PART NUMBER 16-10147-000		REV: A	
DRAWING 16-10147-000		SHEET 2	

51	(1648-016-045) CIRCUIT BREAKER PN 1648-016-045	1
50	16-02897 SHELL 1-WAY	2
49	(39-01-3043) CONNECTOR 4-WAY MOLEX	1
48	16-09577 CONNECTOR 1-WAY	1
47	16-09835 CONNECTOR 3 WAY METRI-PACK 150	1
46	27-01373 NUT	4
45	16-08461 KEY SWITCH	1
44	DIODE: MIN 2 AMP AVE @25°C, MIN 300 VOLT PIV	4
43	16-10085 AMP 2-WAY CONNECTOR	1
42	16-09784 AMP 1-WAY	22
41	16-09199 CONNECTOR, METRI-PACK 150	1
40	16-06396 CONNECTOR, 4-WAY	3
39	16-09578 CONNECTOR, 1-WAY	2
38	16-09573 CONNECTOR 9-WAY PLUG	1
37	16-09572 CONNECTOR 9-WAY CAP	2
36	16-09520 CONNECTOR MLX 9-WAY RECEPTICAL	1
35	16-07493 METRI-PACK PLUG, 2-WAY	1
34	16-07710 METRI-PACK PLUG, 4-WAY	1
33	16-06165 DUST CAP	1
32	16-05925 DIAGNOSTIC CONNECTOR	1
31	16-06994 SHELL 4 WAY FEMALE	1
30	16-08066 CONNECTOR-FEMALE 2 WAY	1
29	16-06995 MICRO-PACK, 6-WAY FEMALE	3
28	16-05679 SHELL, SWITCH, DP CLEAR	2
27	16-05620 MOLEX 16-WAY	1
26	16-05683 MOLEX 18-WAY	1
25	16-05701 METRIC PACK 8-WAY	1
24	16-04269-035 CIRCUIT BREAKER	1
23	16-04269-030 CIRCUIT BREAKER	1
22	16-04269-020 CIRCUIT BREAKER	1
21	16-04269-010 CIRCUIT BREAKER	2
20	16-04267 SHELL, 1 WAY, LATCHING	2
19	16-02897 SHELL, 1 WAY, FEMALE	2
18	16-03282 SHELL, SWITCH, SP	5
17	16-03191 SHELL, SWITCH, DP BLACK	2
16	16-02999 SOCKET	
15	193 BULB	1
14	16-04401 LIGHT SOURCE	
13	16-02100 MOLD, RECEPTACLE	8
12	16-02973 SHELL, 4 WAY, MALE	1
11	16-02365 MOLD-90°, 00	1
10	16-02974 SHELL, 4 WAY, FEMALE	1
9	16-02899 SHELL, 2 WAY, FEMALE	1
8	SHRINK SLEEVE (DOUBLE WALL) (SEE NOTE 6, SHEET 8)	10
7	16-02971 SHELL, 3 WAY, MALE	4
6	16-02975 SHELL, 6 WAY, MALE	2
5	SHRINK SLEEVE	AR
4	16-02898 SHELL, 2 WAY, MALE	5
3	16-03443 SHELL, 2 WAY, MALE, 90°	1
2	16-02896 SHELL, 1 WAY, MALE	20
1	16-02977 SHELL, 6-WAY, MALE	2
	16-05702 METRI PACK 8-WAY	3
	2 DILL BLOC ASSY	1
	16-04266 METRI PACK FEED THRU	
	16-04407 RETAINER	2
	16-04408 RETAINER	
	16-04269 COVER	
	27-00904 BOLT IN M4X25	4

Radco
 A DIVISION OF BUNNEN
 POLYMERFIBRE
 16-10147-000 HARNESS-MAIN CAB
 SHEET 9

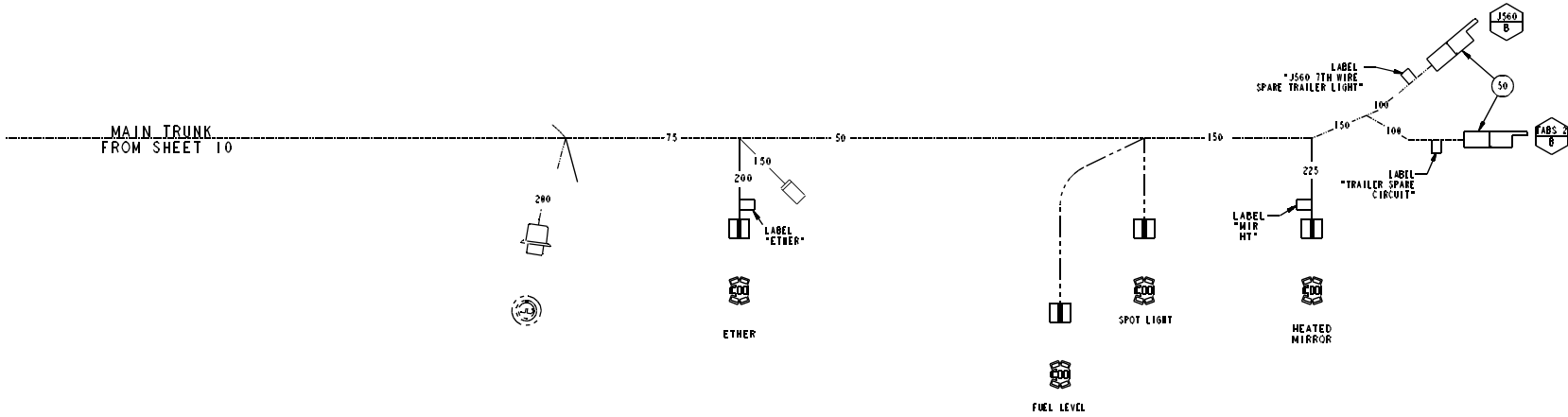


- NOTES:
- 1) ASSEMBLE PER PETERBILT MFS 1608.002
 - 2) THIS HARNESS IS MADE FROM 16-10147-001 BY ADDING THE FOLLOWING CIRCUITS:
J560 - J560 7TH WIRE CIRCUIT
TABS 2 - TRAILER SPARE CIRCUIT
TABS 5 - TRAILER ABS LAMP W/O PLC
 - 3) EXISTING CONNECTOR SHOWN IN PHANTOM FOR REFERENCE.
 - 4) SPOT TAPE ADDITIONAL WIRING TO EXISTING WIRE BREAKOUTS.
 - 5) MOVE CNT AUX IN HARNESS 16-10147-001 TO CNT AUX SHOWN IN DETAIL A.
 - 6) TERMINALS TO BE SELECTED PER SK28129.
USE TERMINAL CODE 12 OR 11.
 - 7) ALL CNTS NOT SHOWN IN CNT TABLE ARE FOR REFERENCE ONLY.
 - 8) SEE DETAIL B FOR DIODE ORIENTATION.
 - 9) DIODES TO BE LOCATED WITH BREAKOUT TO ABS AND TRAILER LAMP CONNECTOR AND ARE TO LAY FLAT AGAINST BUNDLE.
 - 10) USE DOUBLE WALL HEAT SHRINK OR BOTH DIODES.

VARIATION 16-10147-002 MAIN CAB HARNESS WITH ISO CONNECTOR

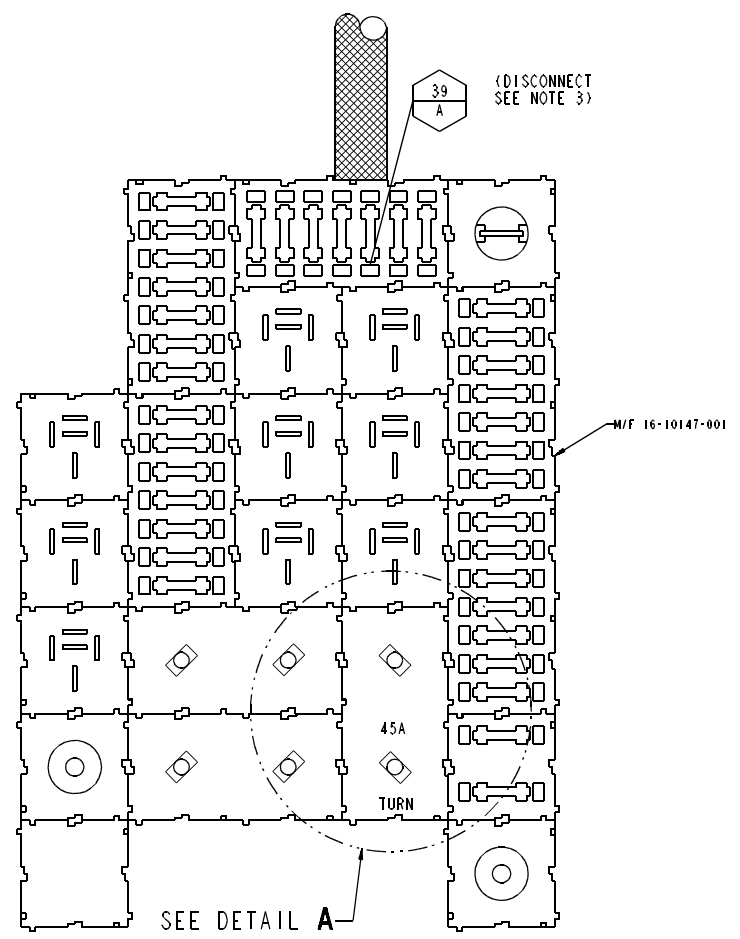
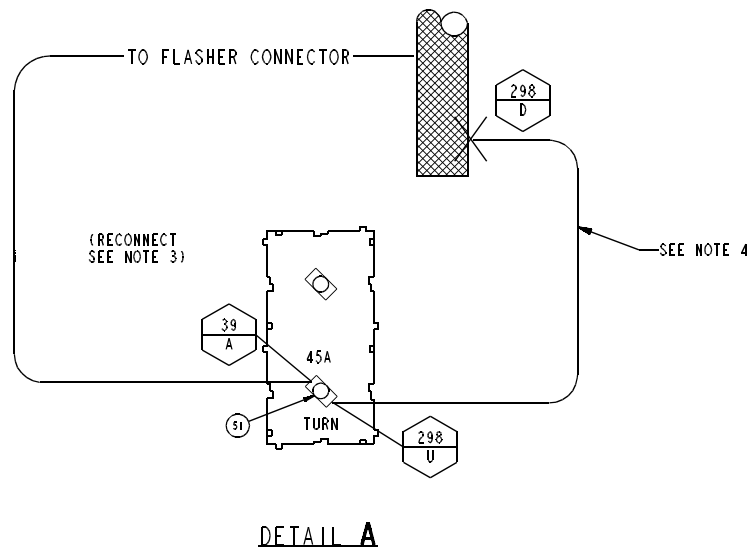
CNT	GA	WIRE	LOC	LOC	FUNCTION
AUX AB	14	16-06017	A	B	ISO 3731 7TH WIRE - TRAILER CONN TO DILL BLOX
J560 AB	14	16-06017	A	B	J560 7TH WIRE - TRAILER CONN TO SPARE
TABS 2AB	14	16-06017	A	B	TRAILER SPARE CNT-TRAILER CONN TO SPARE
ABS2 AC	18	16-04762	A	C	TR-ABS LAMP CONN TO DIODE (3)
ABS2 DB	18	16-04762	D	B	TR-ABS LAMP DIODE (3) TO LIGHTBAR
TABS 5AB	18	16-04762	A	B	TR-ABS LAMP DIODE (4) TO TRAILER CONN

16-10147-000 HARNESS-MAIN CAB
REV: A
DATE: 16-10147-000
DRAWN: [Signature]
CHECK: [Signature]
SCALE: 5:1
SHEET: 10



VARIATION 16-10147-002
MAIN CAB HARNESS WITH ISO CONN

		TITLE HARNESS-MAIN CAB	
PART NUMBER 16-10147-000		REV A	
DRAWN DATE		SHEET 11	



NOTES:

- 1) ADD ITEM 51 CIRCUIT BREAKER IN POSITION SHOWN
- 2) LABEL CIRCUIT BREAKER "45A/TURN" AS SHOWN
- 3) DISCONNECT CIRCUIT #39/A FROM THE FUSE HOLDER, AND CONNECT IT TO THE NEW CIRCUIT BREAKER
- 4) CONNECT 10 GA WIRE FROM 298D SPLICE AND CONNECT TO CIRCUIT BREAKER 298U
- 5) REWORK PER PETERBILT MPS 1600.002
- 6) TERMINALS TO BE SELECTED PER SK28129. USE TERMINAL CODE 12 OR 11
- 7) DOUBLE WALL HEAT SHRINK TUBING (NOT SHOWN)
- 8) THIS HARNESS IS MADE FROM 16-10147-001.

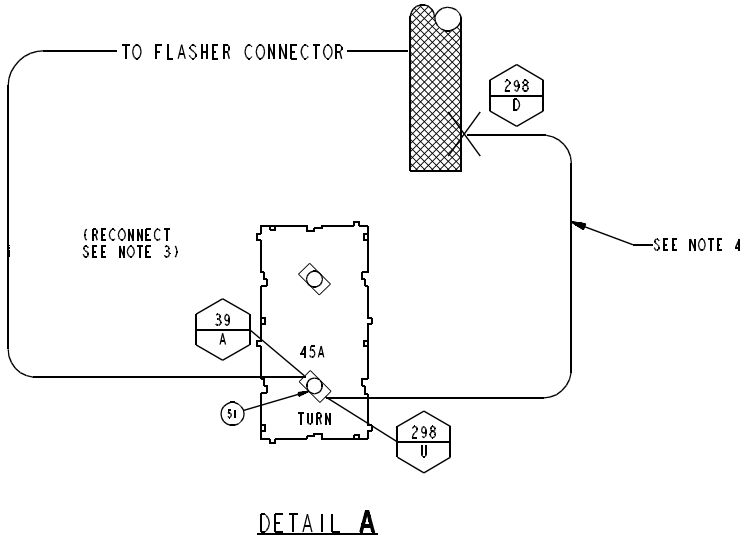
VARIATION 16-10147-003 WITH HD FLASHER					
CKT	GA	WIRE	LOC	LOC	FUNCTION
298DU	10	16-07064	D	U	SPLICE TO SPARE CIRCUIT BREAKER
39AB	10	16-07064	A	B	FLASHER TO CIRCUIT BREAKER

SOME DETAILS WERE REMOVED FOR CLARITY

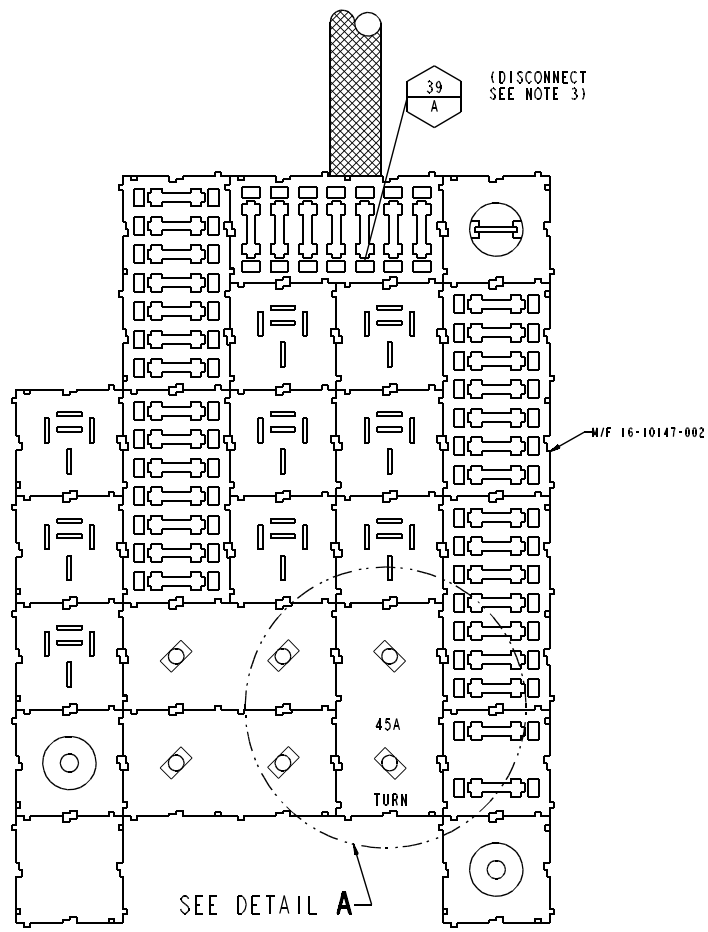
Peterbilt
A DIVISION OF DaimlerChrysler

HARNESS-MAIN CAB
16-10147-000
REV: A

DATE: 5/11
SHEET: 12



DETAIL A



SOME DETAILS WERE REMOVED FOR CLARITY

NOTES:

- 1) ADD ITEM 51 CIRCUIT BREAKER IN POSITION SHOWN
- 2) LABEL CIRCUIT BREAKER "45A/TURN" AS SHOWN
- 3) DISCONNECT CIRCUIT #39/A FROM THE FUSE HOLDER, AND CONNECT IT TO THE NEW CIRCUIT BREAKER
- 4) CONNECT 10 GA WIRE FROM 298D SPLICE AND CONNECT TO CIRCUIT BREAKER 298U
- 5) REWORK PER PETERBILT MPS 1600.002
- 6) TERMINALS TO BE SELECTED PER SK28129. USE TERMINAL CODE 12 OR 11
- 7) DOUBLE WALL HEAT SHRINK TUBING (NOT SHOWN).
- 8) THIS HARNESS IS MADE FROM 16-10147-002.

VARIATION 16-10147-004 WITH ISO CONN AND HD FLASHER					
CKT	GA	WIRE	LOC	LOC	FUNCTION
298DU	10	16-07064	D	U	SPLICE TO SPARE CIRCUIT BREAKER
39AB	10	16-07064	A	B	FLASHER TO CIRCUIT BREAKER

Peterbilt
A Division of DaimlerChrysler

DATE: 16-10147-000
REV: A

16-10147-000
SHEET 13

HARNESS-MAIN CAB