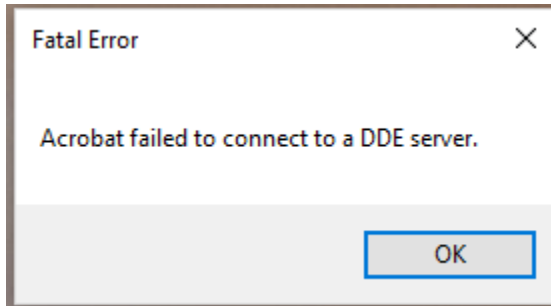
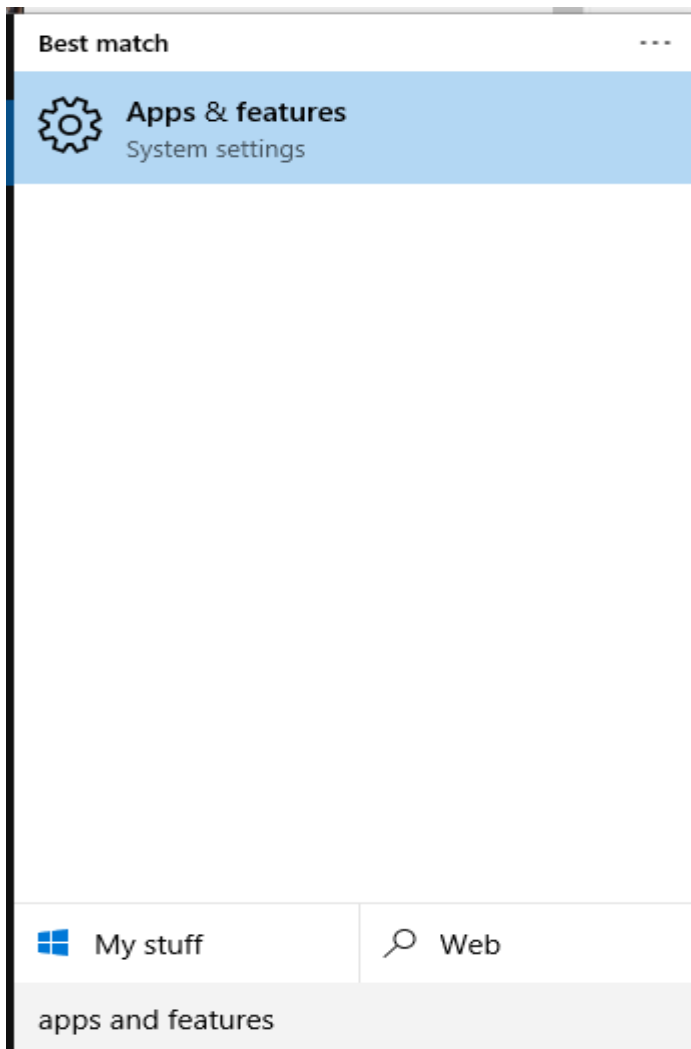


# CHANGING THE DEFAULT .PDF READER TO EDGE FOR WIN 10

1. If the Dock cannot open the Manual for your TND and you get this error, then you need change the default PDF reader to Edge.

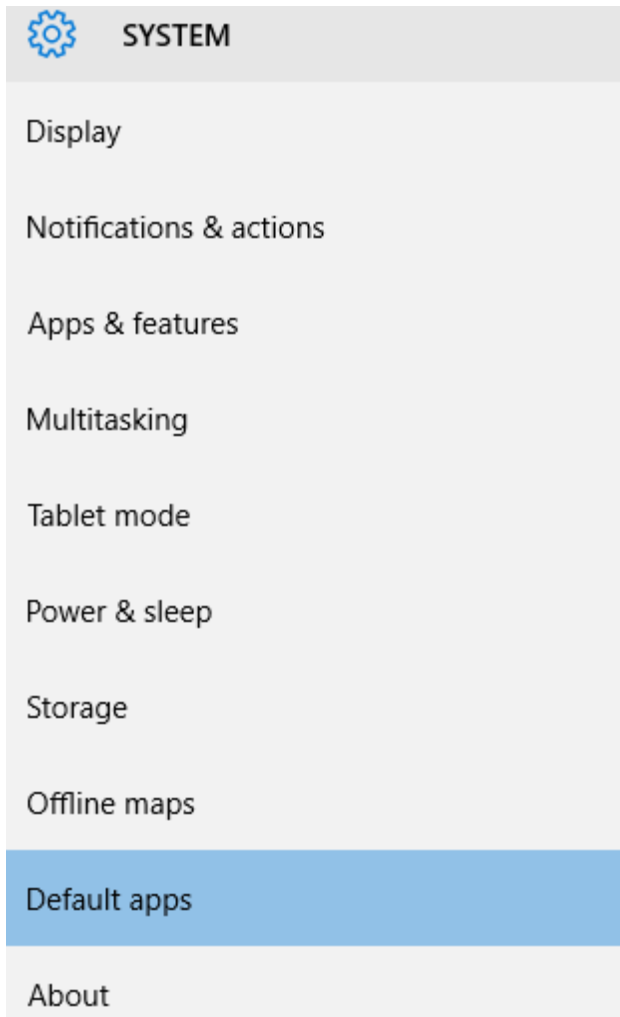


2. Search for "apps and features."



# CHANGING THE DEFAULT .PDF READER TO EDGE FOR WIN 10

3. Click on “apps and features.”
4. Click on “Default apps.”



5. On the right click on “Choose default apps by file type.”

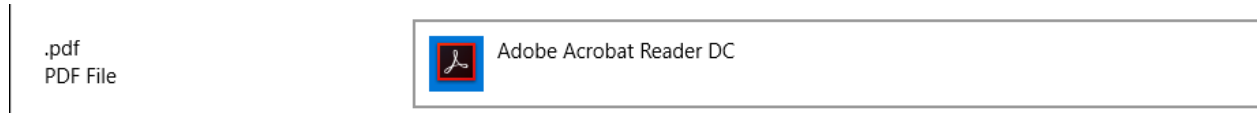
[Choose default apps by file type](#)

[Choose default apps by protocol](#)

[Set defaults by app](#)

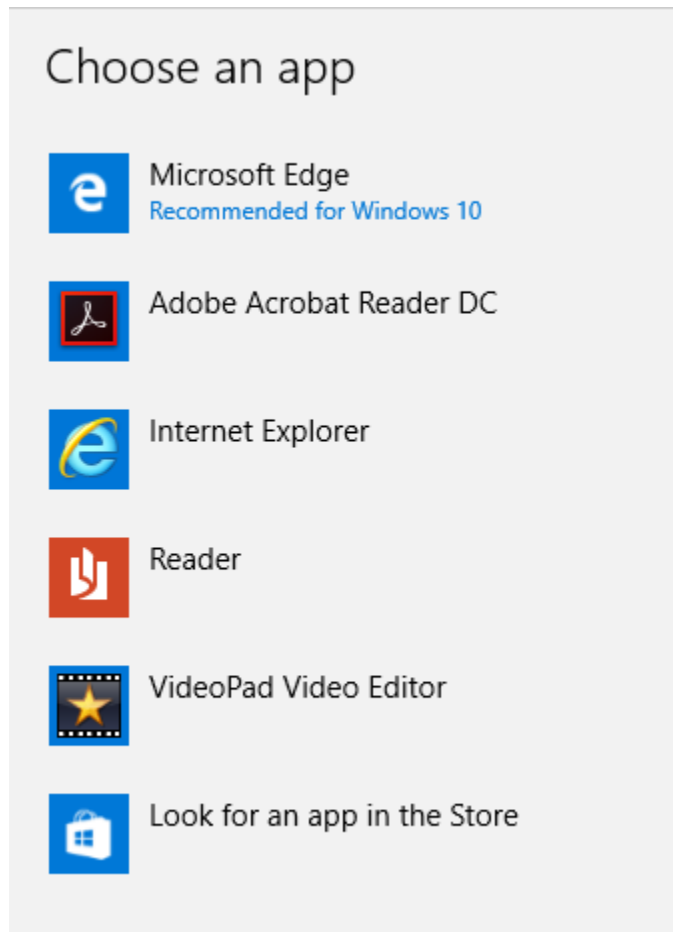
# CHANGING THE DEFAULT .PDF READER TO EDGE FOR WIN 10

6. Scroll down to “.PDF”



7. Click on the right “Adobe Acrobat Reader” (note you may have a different .pdf reader, click on that)

8. This will pop up. Click on “Microsoft Edge.”



9. You can close the settings window. Now if the Dock is up and you click on Manual it will pop up using the Edge as the PDF reader.