

SCHNEIDER

Welcome to Independent Contractor Freight Selection

Core Values

Safety first and always. We have an obligation to our associates and the public to ensure safety. Nothing we do is worth starting ourselves or others.

Integrity In Every Action

We conduct our business with the highest ethical standards. Transparency and honesty are integral to the way we operate.

Respect For All

We seek and value diverse perspectives, experience and backgrounds as the foundation of the enterprise. We treat all stakeholders with dignity and respect.

Excellence In All We Do

We strive to provide the highest quality service to our customers. We have a relentless passion for innovation and improvement.

[Click here to update](#)

[Click here to search for freight](#)

Buy Shipment Search - Windows Internet Explorer

https://sbut1.schneider.com/otmext/sppt/ui/faces/jsp/buyshipmentsearch.jspx?_afriLoop=56808445129000&_afriWindowMode=0&_adf.ctrl-state=j1z7gyan3_14

Buy Shipment Search

SCHNEIDER Service Provider

Driver N Test428

Shipment Search Custom Saved Searches Alert History Alert Profile

NAT/NAL

Last Stop

Loc ID/Name : 88842 PACTIV CORP
City/State : CORSICANA TX
Est Arrival : 07/15/2015 07:00
Est Depart : 07/15/2015 08:00

Update NAT/NAL

NAL

* NAT 07/15/2015 17:00

Current NAT 88842 PACTIV COR CORSICANA TX

The first thing you will notice about the updated IC Portal are the four tabs at the top. We will start at the Alert Profile tab all the way over to the right.

Done

Local intranet | Protected Mode: Off 100%

Buy Shipment Search - Windows Internet Explorer

https://sbuat1.schneider.com/otmext/sppt/ui/faces/jsp/buyshipmentsearch.jspx?_afzLoop=10349785614000&_afzWindowMode=0&_adf.ctrl-state=qedm3ihtn_4

Buy Shipment Search

SCHNEIDER Service Provider Driver II Test428

Shipment Search Custom Saved Searches Alert History **Alert Profile**

Save Cancel

Alerts For:

Work Assignment Withdrawn ☐

Confirmed Shipment ☐

How You Want To Be Alerted:

Email ☐

In-Cab Device ☐

Disclaimer:

These alerts are provided solely for your information and are not intended to be confirmation for shipment assignments, nor do they guarantee the availability of the shipments for any length of time.

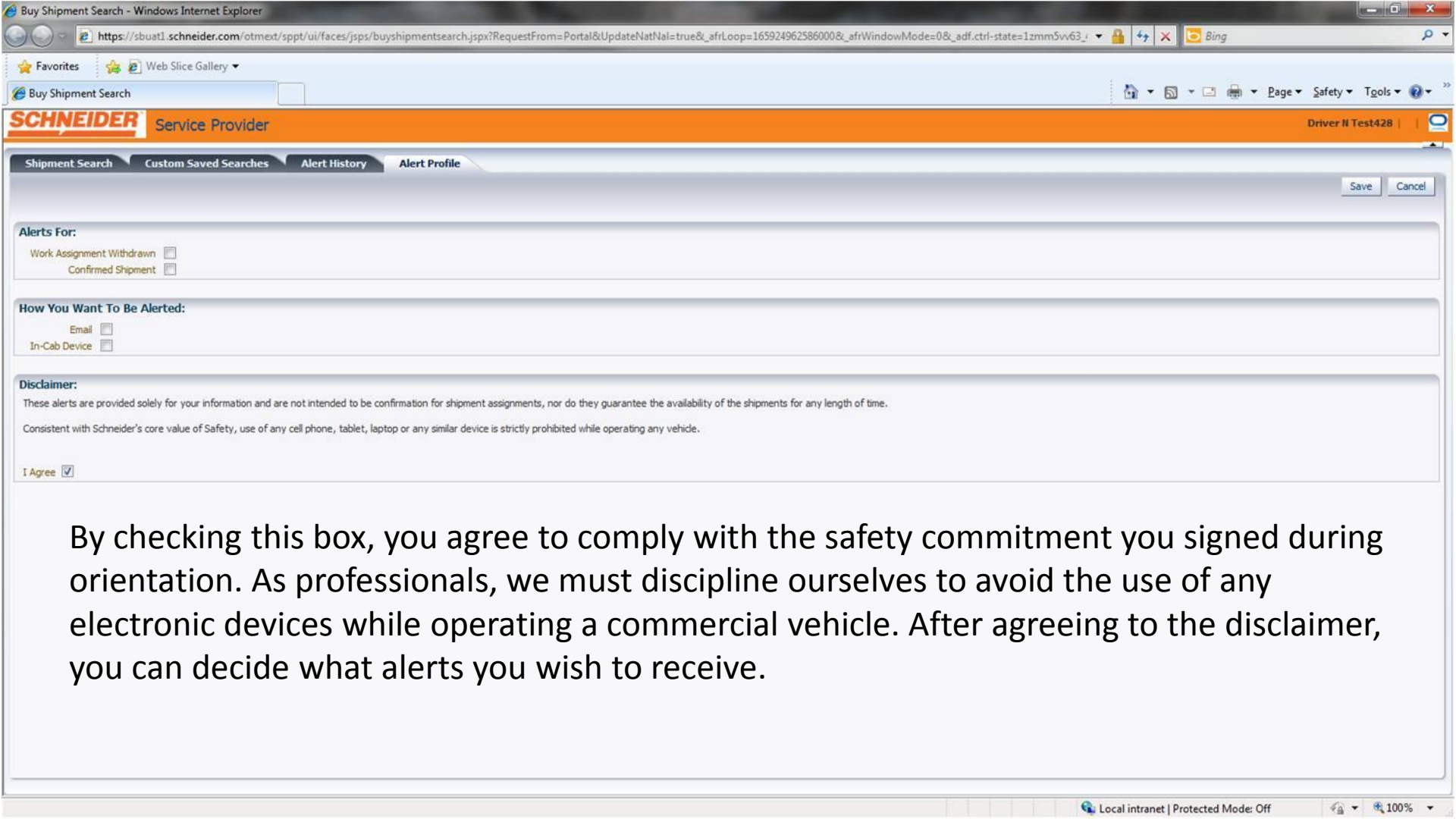
Consistent with Schneider's core value of Safety, use of any cell phone, tablet, laptop or any similar device is strictly prohibited while operating any vehicle.

I Agree ☐

This is the Alert Profile. The purpose of this tab is for you to determine how you want to receive alerts. Look at the bottom of this form – the disclaimer. You must check the “I Agree” box in order to receive any alerts.

****The Alert Profile can ONLY be accessed from a laptop, not a mobile device**

Local intranet | Protected Mode: Off 100%



Alerts For:

Work Assignment Withdrawn ☐

Confirmed Shipment ☐

How You Want To Be Alerted:

Email ☐

In-Cab Device ☐

Disclaimer:

These alerts are provided solely for your information and are not intended to be confirmation for shipment assignments, nor do they guarantee the availability of the shipments for any length of time.

Consistent with Schneider's core value of Safety, use of any cell phone, tablet, laptop or any similar device is strictly prohibited while operating any vehicle.

I Agree ☒

By checking this box, you agree to comply with the safety commitment you signed during orientation. As professionals, we must discipline ourselves to avoid the use of any electronic devices while operating a commercial vehicle. After agreeing to the disclaimer, you can decide what alerts you wish to receive.

Buy Shipment Search - Windows Internet Explorer

https://sbutat1.schneider.com/otmext/sppt/ui/faces/jsps/buyshipmentsearch.jspx?_afriLoop=10349785614000&_afriWindowMode=0&_adf.ctrl-state=qedm3ihtn_4

Buy Shipment Search

SCHNEIDER Service Provider Driver # Test428

Shipment Search Custom Saved Searches Alert History Alert Profile

✓ Create Saved Search Save Cancel

* Saved Search Name

Origin (Required)

* Saved Search Criteria NATNL

NAL Radius 50 Miles

Shipment Earliest Start (Hours Before NAT) 48 - (Hours After NAT) 72

Radius / City / State / Country 50 Miles USA

Earliest Start Date (Begin) 6/23/2015 - (End) 7/7/2015

Destination

Destination Search Criteria

Radius / City / State / Country 50 Miles USA

Planned Delivery Date (Begin) - (End)

Rate

Minimum Rate Per Loaded Mile \$ 0.00

Alert Settings

Active

Expiration Date

* Number of Hours Between Alerts 6

✓ Saved Search View

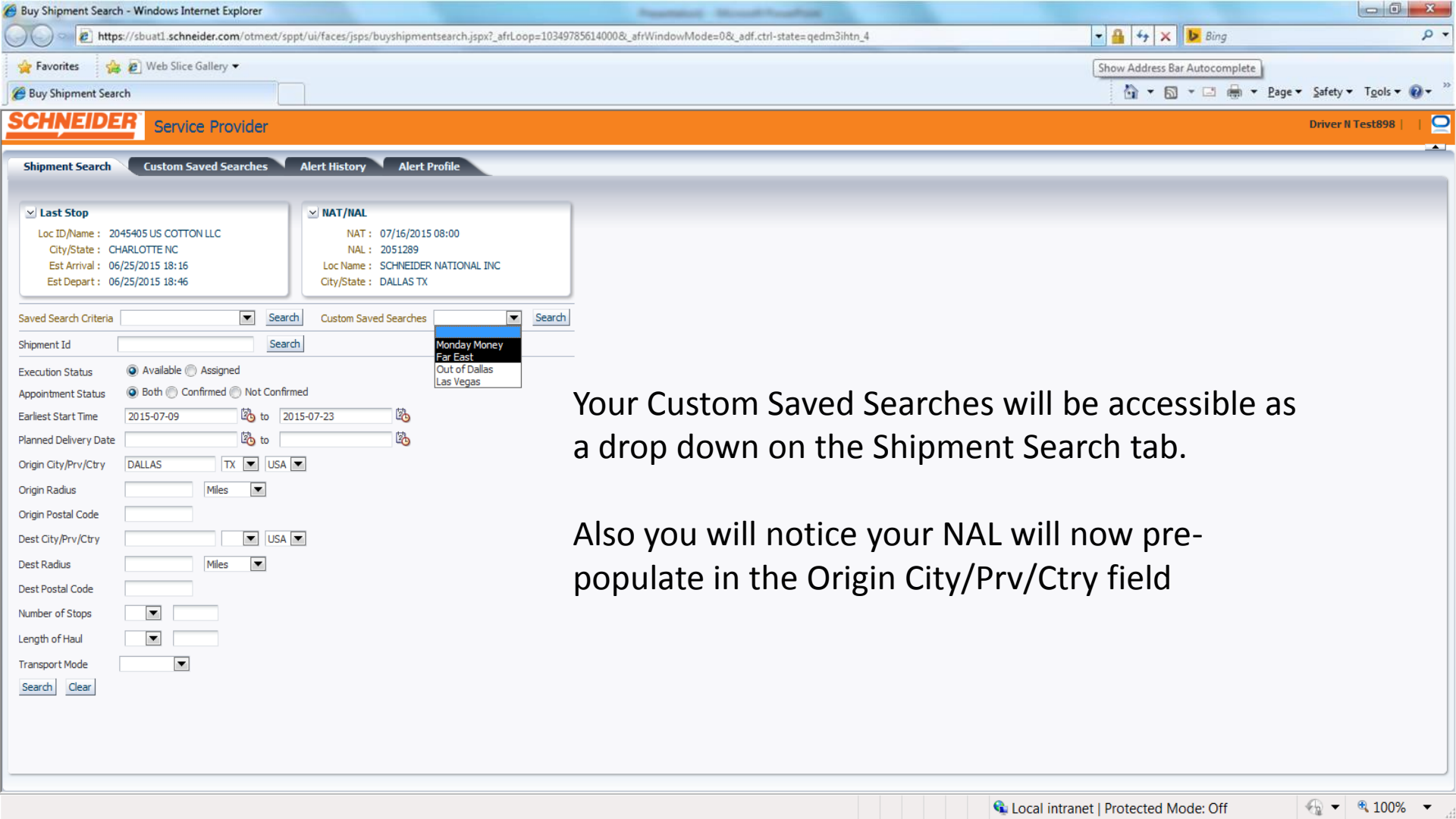
View Format Edit Saved Search Delete Saved Search

Active Saved Search Name Saved Search Criteria Origin Start Origin End Destination Start Destination End Expiration Date Number of Hours Between Alerts Last Alert Sent DTTM Next Alert Send DTTM Update Saved Search DTTM

Total Records: 0

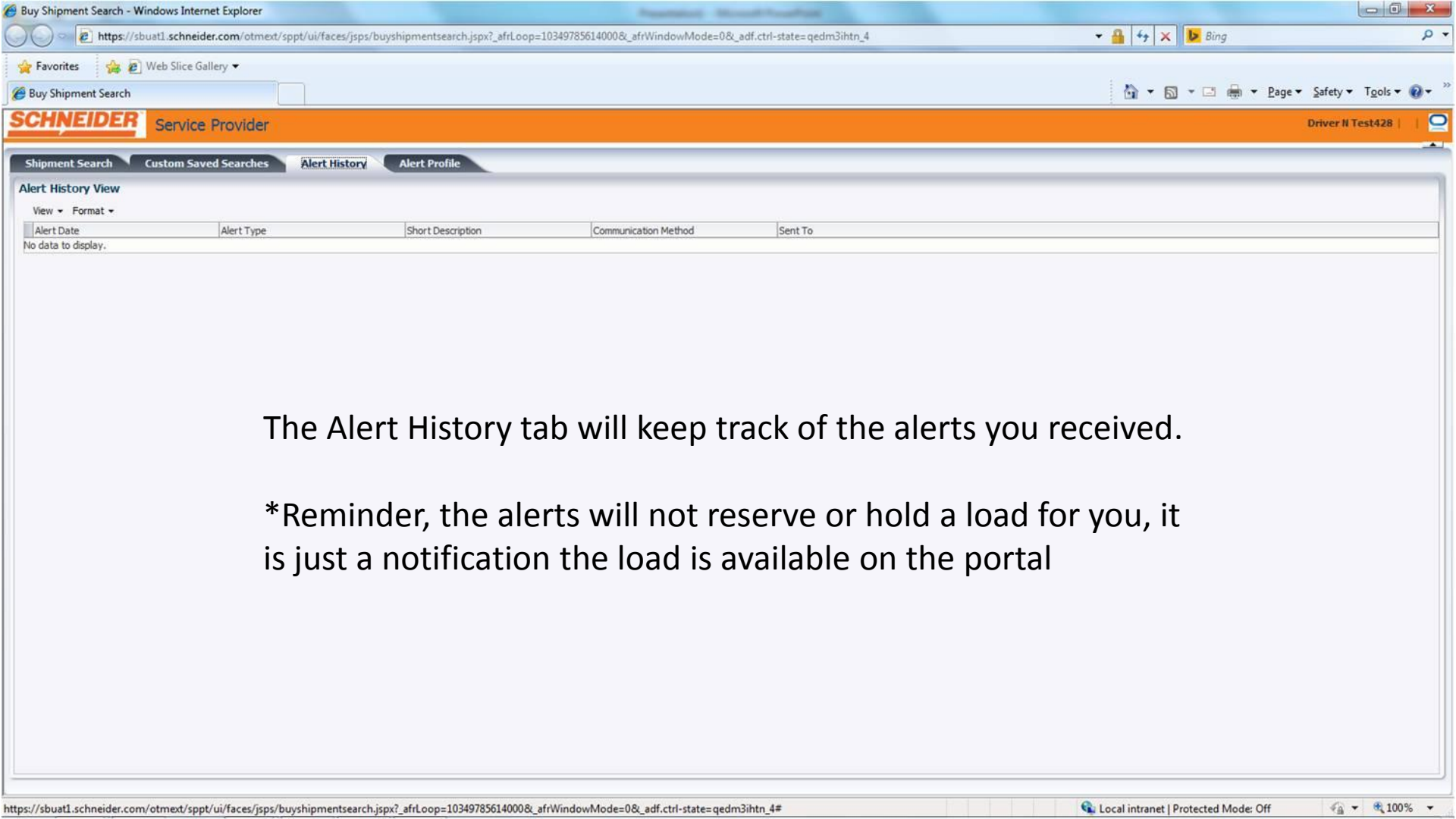
No data to display.

The Custom Saved Searches tab will let you create special searches and save them to use over and over. This will prove to be a very handy tool for those who like to run in a specific market. You can create up to 10 saved searches. You can make as many as three active to alert you of new loads at any time. *Click the button.*



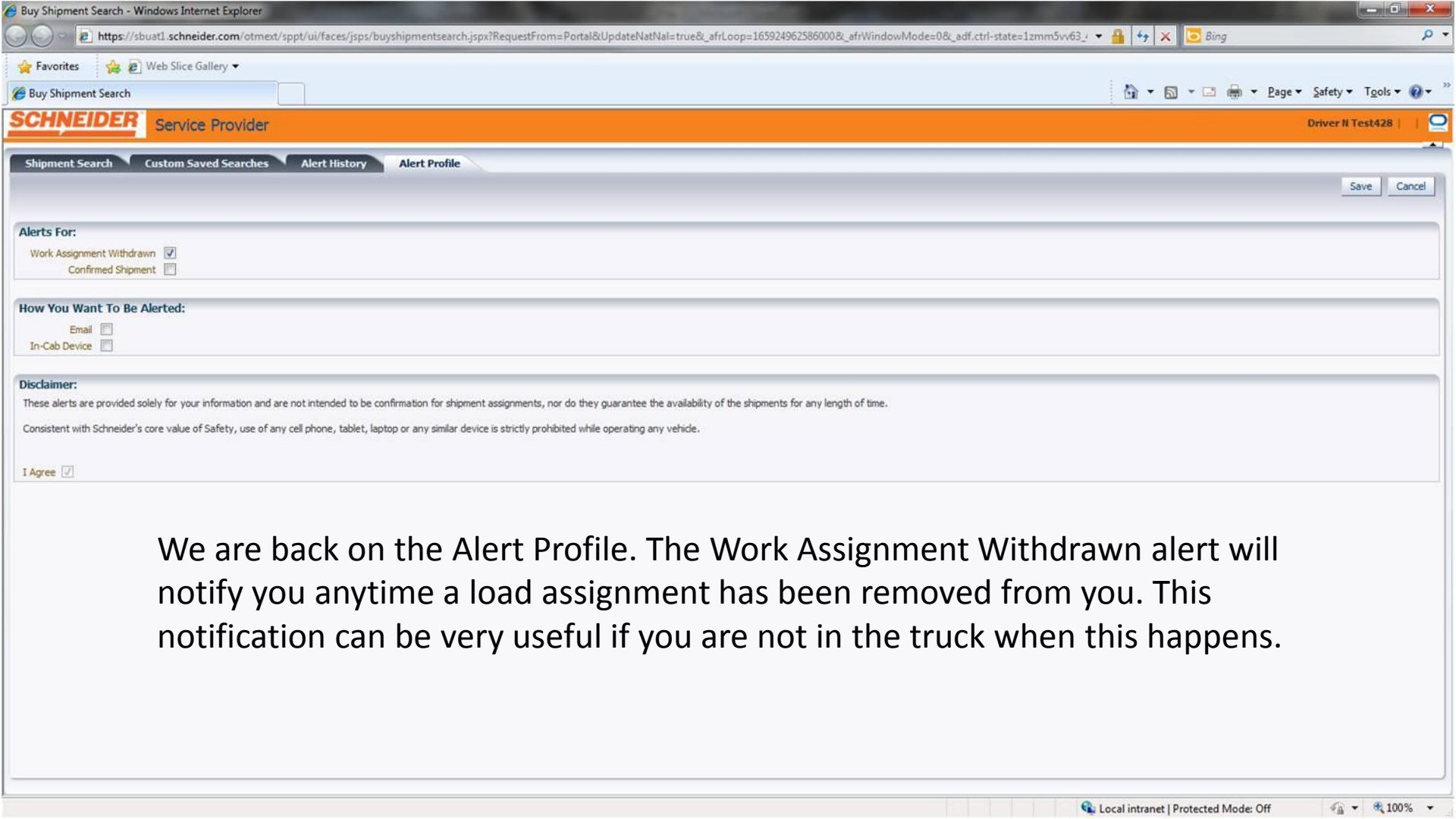
Your Custom Saved Searches will be accessible as a drop down on the Shipment Search tab.

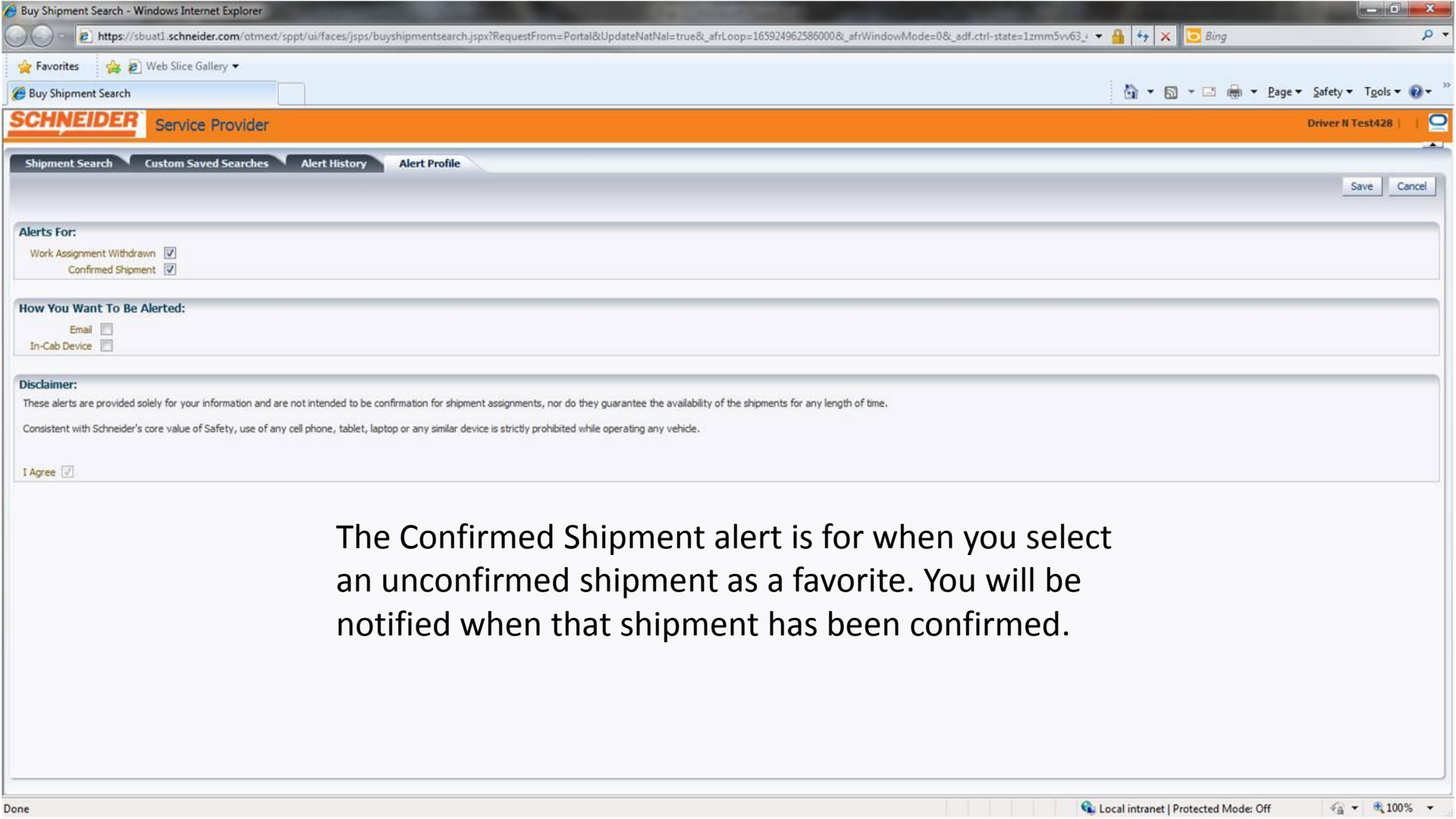
Also you will notice your NAL will now pre-populate in the Origin City/Prv/Ctry field



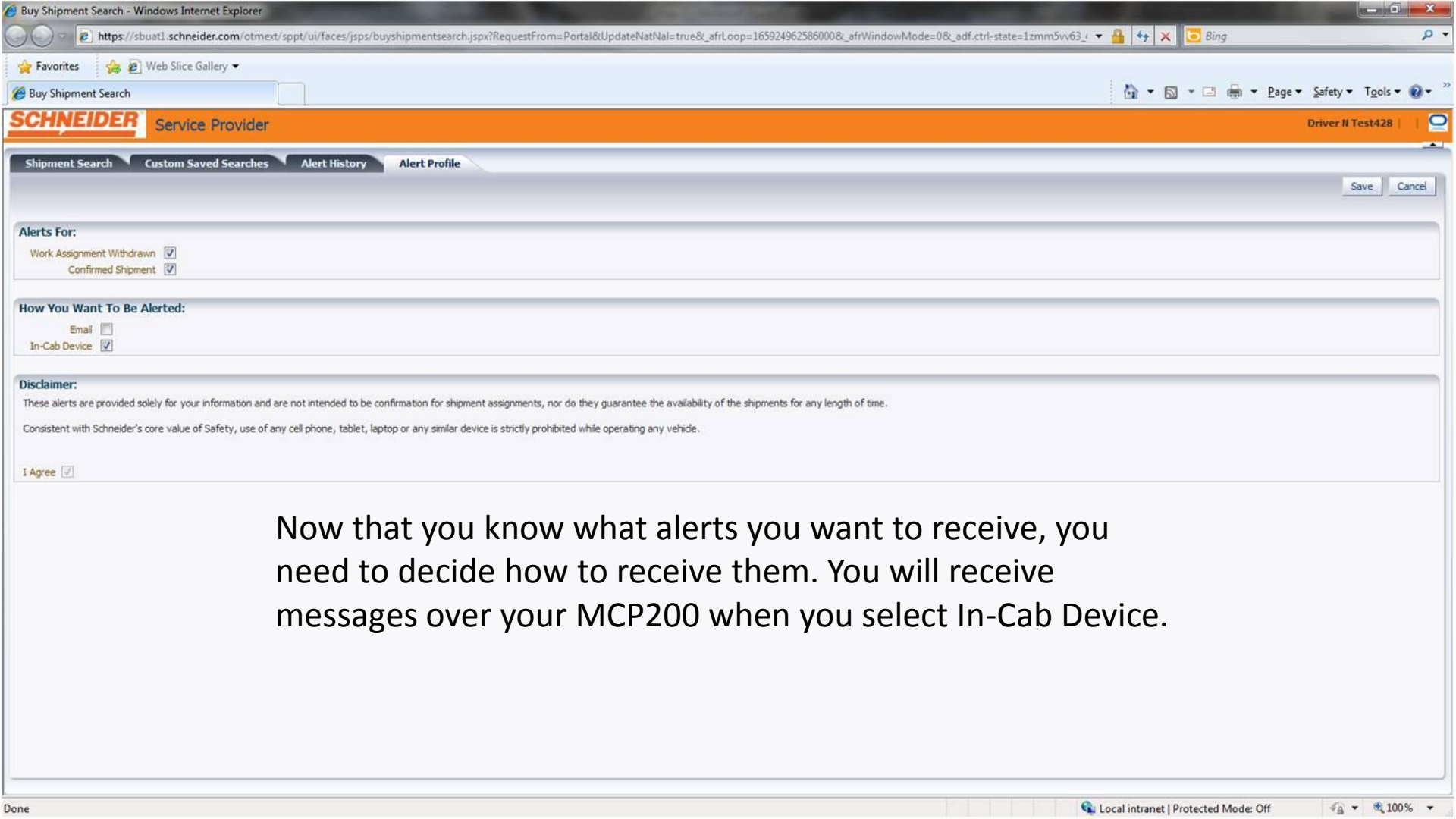
The Alert History tab will keep track of the alerts you received.

*Reminder, the alerts will not reserve or hold a load for you, it is just a notification the load is available on the portal

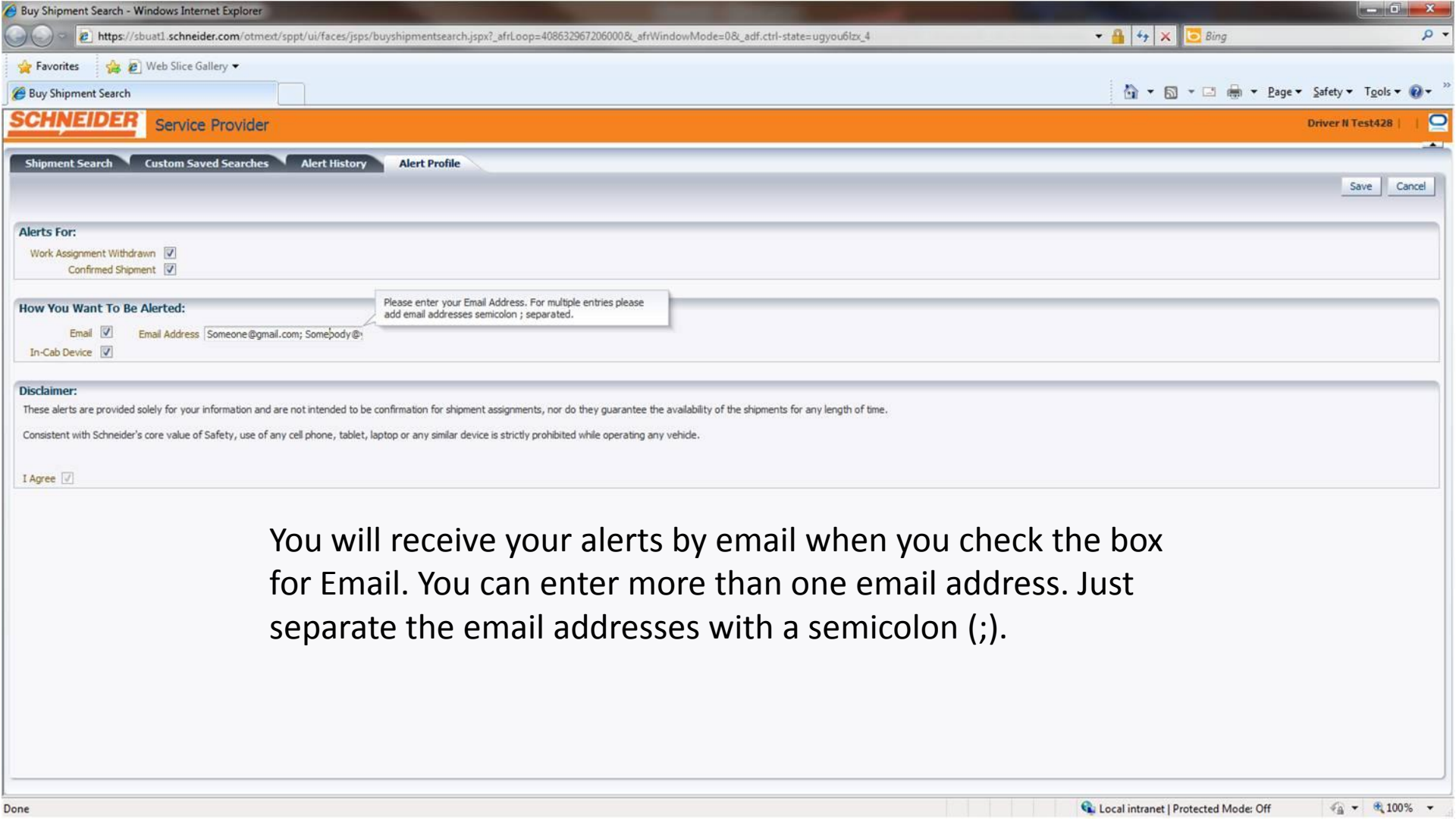




The Confirmed Shipment alert is for when you select an unconfirmed shipment as a favorite. You will be notified when that shipment has been confirmed.



Now that you know what alerts you want to receive, you need to decide how to receive them. You will receive messages over your MCP200 when you select In-Cab Device.



Buy Shipment Search - Windows Internet Explorer

https://sbuat1.schneider.com/otmext/sppt/ui/faces/jsp/buyshipmentsearch.jspx?RequestFrom=Portal&UpdateNatNal=true&_afLoop=165924962586000&_afWindowMode=0&_adf.ctrl-state=1zm5v63_4

Buy Shipment Search

SCHNEIDER Service Provider

Driver II Test428

Shipment Search Custom Saved Searches Alert History Alert Profile

Alerts For:

Work Assignment Withdrawn ☒
Confirmed Shipment ☒

How You Want To Be Alerted:

Email ☒ Email Address
In-Cab Device ☒

Disclaimer:

These alerts are provided solely for your information and are not intended to be confirmation for shipment assignments, nor do they guarantee the availability of the shipments for any length of time.

Consistent with Schneider's core value of Safety, use of any cell phone, tablet, laptop or any similar device is strictly prohibited while operating any vehicle.

I Agree ☒

Information
Your changes have been successfully saved.

NO PHONE ZONE

These tabs are just another enhancement designed to help you run your business. Feel free to play with them. You cannot break anything here. Also, please keep in mind the safety commitment you made regarding the use of electronic devices while driving. Thank you!

Safety First and Always