



# Spicer® Axles & Brakes

ABIB-0402

## Information Bulletin

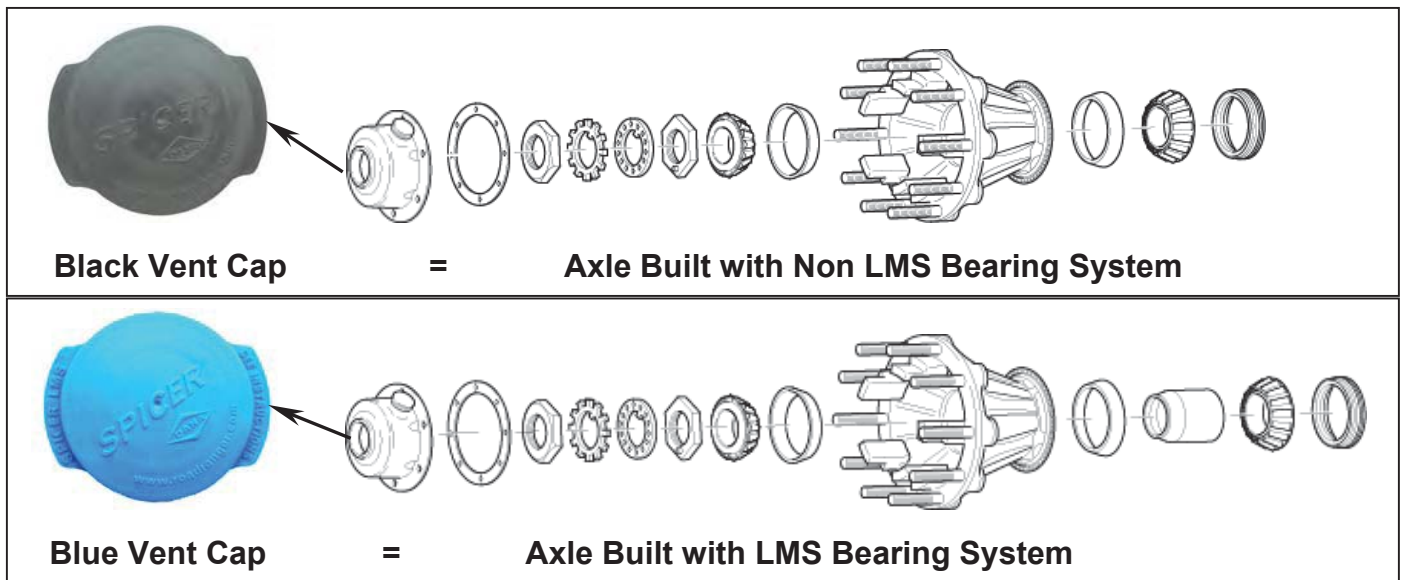
Bulletin Type: Service Information

Topic: New Dana Spicer Steer and Trailer Axle Hubcaps for Oil Applications.

### Affected Models: All Dana Steer and Trailer Axles

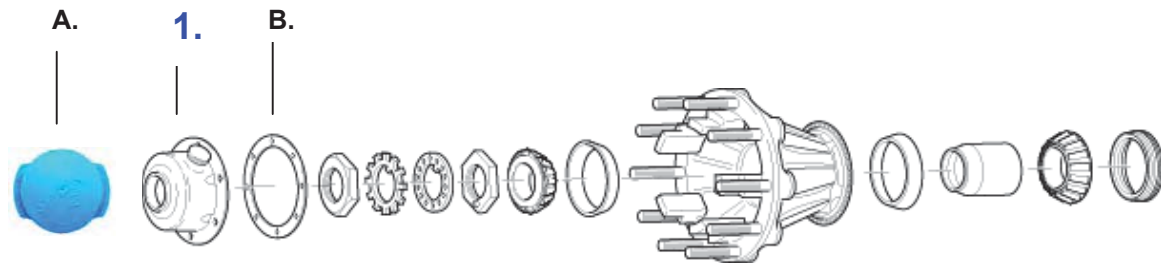
Dana Corporation's Commercial Vehicle Systems Division has released a new Low Maintenance Hubcap System (LMS) and will be made available for shipment beginning March 1, 2004. This hubcap and vent system will be available for aluminum and iron, oil-lubricated hubs. The LMS hubcap system is available for 10,000 through 22,000 lb. steer axle families, and both TP and TN spindle trailer axles ranging from 20,000 to 26,000 lb capacity.

This hubcap and vent system will identify to the service technician if the axle is equipped with a LMS or standard non-LMS wheel bearing system. The standard, non-LMS hubcap version is recognized by a black hubcap vent cap, while the LMS hubcap system is identified by a blue vent cap, with LMS identification tabs. The blue LMS vent plug can be used instead to replace the current LMS identification ring, as it exists today. See Figures below.



This bulletin contains product information.  
Dana Corporation is not committed or liable for canvassing existing product.

## Parts Listing for Dana Steer Axle & Trailer Axle Hubcap Parts



Items C & D – Hubcap Bolts & Lockwashers – Not Illustrated

### SPICER HUBCAP PART NUMBERS - STEER AXLES

Item No.	Dana Kit P/N	Description	BC Dimension	Type Hubcap	Vent Cap Design	Notes
1	977123	Hubcap Kit	4.50"	Oil		
1	977125	Hubcap Kit	5.50"	Oil	LMS Hub Cap - Blue	
1	977124	Hubcap Kit	4.50"	Oil	Hub Cap - Non LMS	
1	977126	Hubcap Kit	5.50"	Oil	Black	
A	976630	Vent Plug	n/a	Oil	Blue - LMS	Included w/ all hubcap kits
A	976764	Vent Plug	n/a	Oil	Black	Included w/ all hubcap kits
B	977147	Gasket	4.50"	----	----	Included w/ all hubcap kits
B	977148	Gasket	5.50"	----	----	Included w/ all hubcap kits
C	976996	Bolts (qty 6)	n/a	----	----	Included w/ all hubcap kits

\*Note: At this time the LMS Hubcaps for grease applications has not been released.

### SPICER HUBCAP PART NUMBERS - TRAILER AXLES

Item No.	Dana Kit P/N	Description	BC Dimension	Type Hubcap	Vent Cap Design	Notes
1	M10HK209	Hubcap Kit	5.50"	Syn Grease	LMS - Vented	Spicer logo, "D" series axles (replaces P/N: EH969137)
	M10HK199	Hubcap Kit	5.50"	Oil	LMS	Spicer logo, "D" series axles
1	M10HK213	Hubcap Kit	6.75"	Oil	LMS	Spicer logo, "P" series axles
1	M10HK210	Hubcap Kit	6.75"	Syn Grease	LMS - Vented	Spicer logo, "P" series axles (replaces P/N: EH969138)
B	M10HG138	Gasket	6.75"	----	----	Included w/ all hubcap kits
B	M10HG108	Gasket	5.50"	----	----	Included w/ all hubcap kits (replaces P/N: EH969143)
C	M10HM182	Bolts (qty 6)	----	----	----	Included w/ all hubcap kits
D	M10HN216	Lockwashers (6)	----	----	----	Included w/ all hubcap kits

For spec'ing or service assistance, call 1-800-621-8084 24 hours a day, 7 days a week.

Or visit our web site at: <http://www.spicerparts.com>