

1 6 14-12



Service Information Bulletin

SUBJECT	DATE
EPA10/GHG14 Aftertreatment Device Sensor Locations	June 2012

Additions, Revisions, or Updates

Publication Number / Title	Platform	Section Title	Change
DDC-SVC-MAN-0083	EPA10/ GHG14 DD Platform	EPA10/GHG14 Aftertreatment Device Sensor Locations	Updated information.



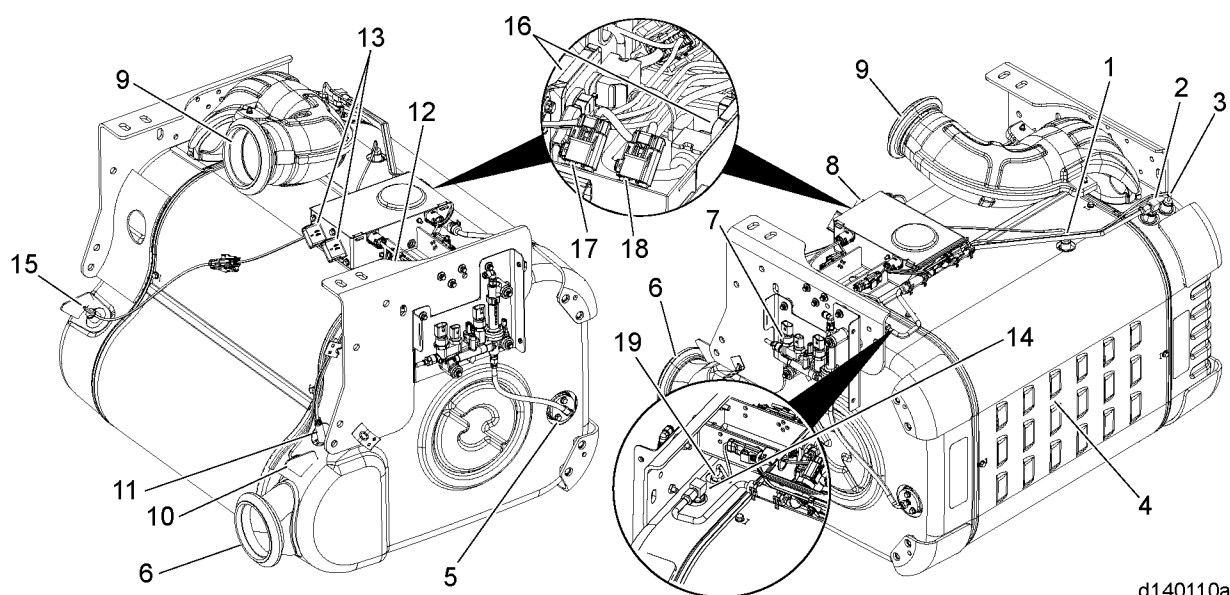
13400 Outer Drive, West, Detroit, Michigan 48239-4001
Telephone: 313-592-5000
www.demanddetroit.com

2 EPA10/GHG14 Aftertreatment Device Sensor Locations

The Aftertreatment Control Module (ACM) reads or controls the signals for the following sensors:

- Diesel Oxidation Catalyst (DOC) Inlet Temperature Sensor (Located on the Aftertreatment Device).
- Diesel Oxidation Catalyst (DOC) Outlet Temperature Sensor (Located on the Aftertreatment Device).
- Diesel Particulate Filter (DPF) Outlet Temperature Sensor (Located on the Aftertreatment Device).
- Diesel Particulate Filter (DPF) Inlet Pressure Sensor (Located in the Diesel Particulate Filter Sensor Box).
- Diesel Particulate Filter (DPF) Outlet Pressure Sensor (Located in the Diesel Particulate Filter Sensor Box).
- Selective Catalytic Reduction (SCR Catalyst) Inlet Temperature Sensor (Located in the exhaust flow near the Selective Catalytic Reduction).
- Selective Catalytic Reduction (SCR) Outlet Temperature Sensor (Located in the exhaust flow near the Selective Catalytic Reduction).
- Selective Catalytic Reduction (SCR Catalyst) Inlet NOx Sensor (Located in the Diesel Particulate Filter Sensor Box).
- Selective Catalytic Reduction (SCR Catalyst) Outlet NOx Sensor (Located in the Selective Catalytic Reduction Sensor Box).
- Diesel Exhaust Fluid (DEF) Temperature Sensor (Located in the Diesel Exhaust Fluid Tank).
- Diesel Exhaust Fluid (DEF) Level Sensor (Located in the Diesel Exhaust Fluid Tank).
- Diesel Exhaust Fluid (DEF) Temperature Sensor (Located on the Diesel Exhaust Fluid Metering Unit).
- Diesel Exhaust Fluid (DEF) Pressure Sensor (Located on the Diesel Exhaust Fluid Metering Unit).
- Compressed Air Pressure Sensor (Located on the Diesel Exhaust Fluid Metering Unit).
- Diesel Exhaust Fluid (DEF) Injector (Located on the Diesel Exhaust Fluid Metering Unit). The Aftertreatment Control Module controls the Diesel Exhaust Fluid Injector.
- Diffuser Heater (Located on the Diesel Exhaust Fluid Metering Unit). The Aftertreatment Control Module controls the Diffuser Heater.
- Diesel Exhaust Fluid (DEF) Metering Unit heater (Located on the Diesel Exhaust Fluid Metering Unit). The Aftertreatment Control Module controls the Diffuser Heater.
- Diesel Exhaust Fluid (DEF) Pump Module (Located on the back of the Diesel Exhaust Fluid Tank).
- Coolant Valve (Located on the Diesel Exhaust Fluid Tank or remote-mounted depending on Diesel Exhaust Fluid Tank size). The Aftertreatment Control Module controls the Coolant Valve.
- Diesel Exhaust Fluid Line Heaters (4) (Located in the Diesel Exhaust Fluid Lines mounted to the vehicle's frame rail).

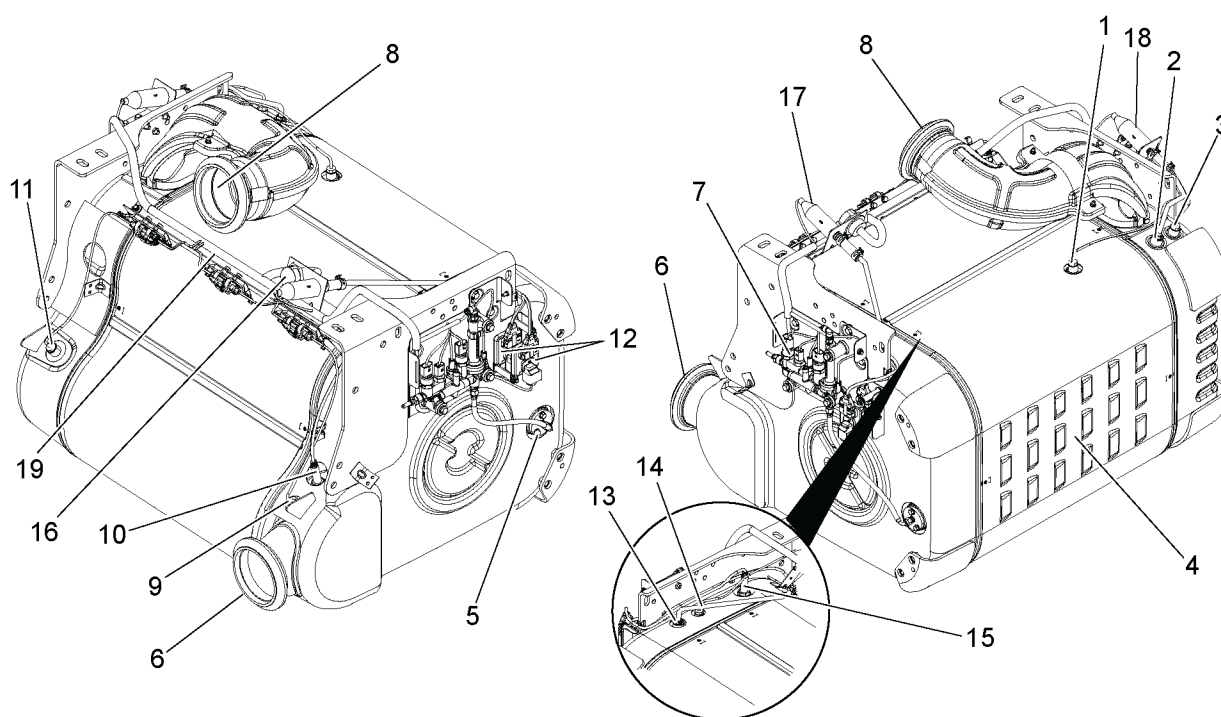
1-BOX™ Sensor Locations



d140110a

- | | |
|--|--|
| 1. Diesel Oxidation Catalyst Outlet Temperature Sensor | 11. Selective Catalytic Reduction (SCR Catalyst) Outlet NOx Sensor |
| 2. Diesel Oxidation Catalyst Inlet Pressure Sensor Elbow | 12. Selective Catalytic Reduction (SCR Catalyst) Inlet NOx Sensor |
| 3. Diesel Oxidation Catalyst Inlet Temperature Sensor | 13. 14-Pin Connectors |
| 4. Front Heat Shield | 14. Diesel Particulate Filter Outlet Pressure Sensor Elbow |
| 5. Diesel Exhaust Fluid Nozzle | 15. Selective Catalytic Reduction (SCR Catalyst) Inlet Temperature Sensor |
| 6. Exhaust Outlet | 16. Selective Catalytic Reduction (SCR Catalyst) Inlet and Outlet NOx Sensors (microprocessor mounted) |
| 7. Diesel Exhaust Fluid Metering Unit | 17. Diesel Particulate Filter Outlet Pressure Sensor |
| 8. Sensor Box including Pressure Sensors | 18. Diesel Oxidation Catalyst Inlet Pressure Sensor |
| 9. Exhaust Inlet | 19. Diesel Particulate Filter Temperature Sensor |
| 10. Selective Catalytic Reduction (SCR Catalyst) Outlet Temperature Sensor | |

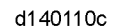
Figure 1. EPA10 1-BOX™ Configuration



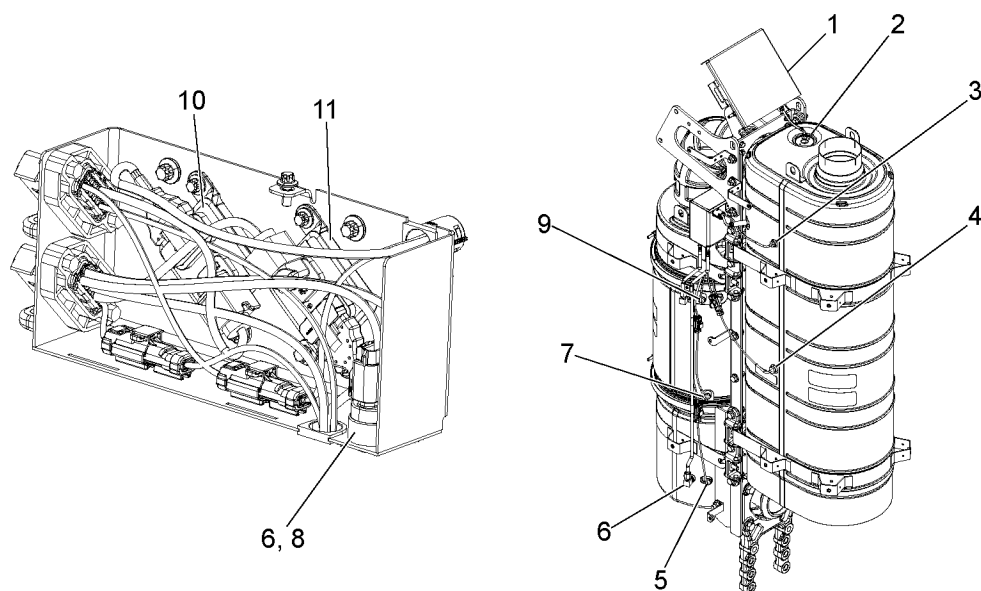
d140110b

- | | |
|---|--|
| 1. Diesel Oxidation Catalyst Outlet Temperature Sensor | 11. Selective Catalytic Reduction (SCR Catalyst) Inlet Temperature Sensor |
| 2. Diesel Oxidation Catalyst Inlet Pressure Sensor Tube | 12. Selective Catalytic Reduction (SCR Catalyst) Inlet and Outlet NOx Sensors (microprocessor mounted) |
| 3. Diesel Oxidation Catalyst Inlet Temperature Sensor | 13. Diesel Particulate Filter Outlet Pressure Sensor Tube |
| 4. Front Heat Shield | 14. Selective Catalytic Reduction (SCR Catalyst) Inlet Temperature Sensor |
| 5. Diesel Exhaust Fluid Nozzle | 15. Selective Catalytic Reduction (SCR Catalyst) Inlet NOx Sensors |
| 6. Exhaust Outlet | 16. 47-Pin Connector Harness |
| 7. Diesel Exhaust Fluid Metering Unit | 17. Diesel Particulate Filter Outlet Pressure Sensor |
| 8. Exhaust Inlet | 18. Diesel Oxidation Catalyst Inlet Pressure Sensor |
| 9. Selective Catalytic Reduction (SCR Catalyst) Outlet Temperature Sensor | 19. Sensor bridge |
| 10. Selective Catalytic Reduction (SCR Catalyst) Outlet NOx Sensor | |

Figure 2. 2012 1-BOX™ Configuration



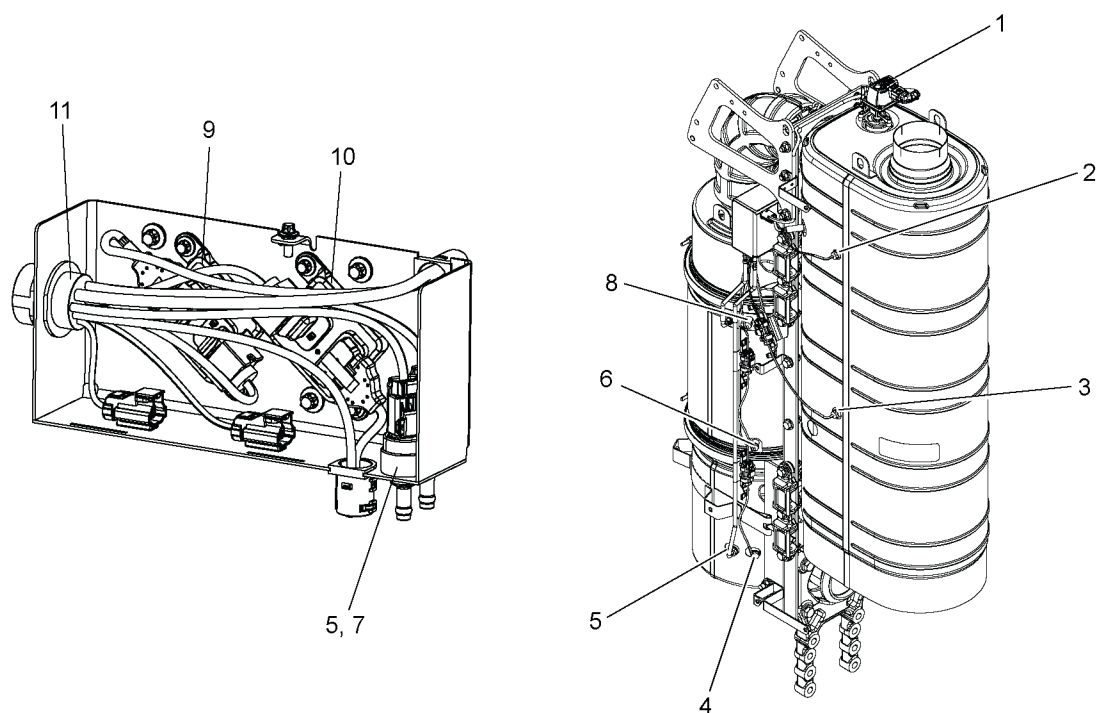
- All information subject to change without notice.*
Copyright © 2012 DETROIT DIESEL CORPORATION **6 14-12**



d140162

- | | |
|---|--|
| 1. Diesel Exhaust Fluid Metering Unit | 7. Diesel Particulate Filter Inlet Temperature Sensor |
| 2. Diesel Exhaust Fluid Nozzle | 8. Diesel Particulate Filter Outlet Pressure Sensor |
| 3. Selective Catalytic Reduction (SCR Catalyst) Outlet Temperature Sensor | 9. Diesel Particulate Filter Outlet Temperature Sensor |
| 4. Selective Catalytic Reduction (SCR Catalyst) Inlet Temperature Sensor | 10. Selective Catalytic Reduction (SCR Catalyst) Outlet NOx Sensor |
| 5. Diesel Oxidation Catalyst Inlet Temperature Sensor | 11. Selective Catalytic Reduction (SCR Catalyst) Inlet NOx Sensor |
| 6. Diesel Oxidation Catalyst Inlet Pressure Sensor | |

Figure 4. 2V2 Two-Box Configuration



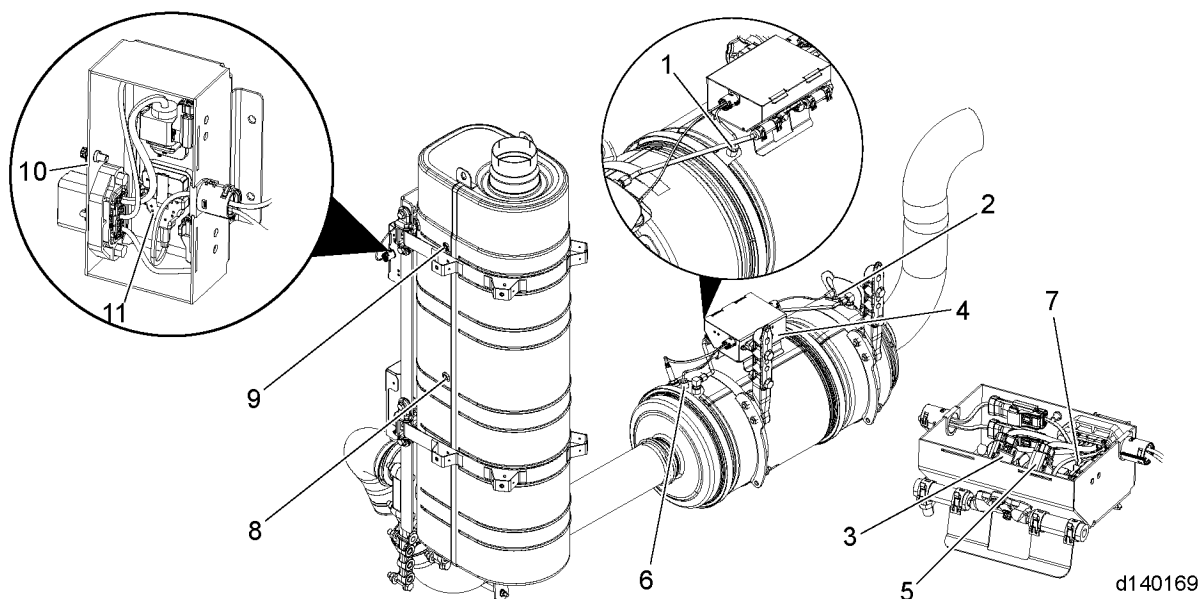
d140162a

- | | |
|---|--|
| 1. Diesel Exhaust Fluid Doser Unit | 7. Diesel Particulate Filter Outlet Pressure Sensor |
| 2. Selective Catalytic Reduction (SCR Catalyst) Outlet Temperature Sensor | 8. Diesel Particulate Filter Outlet Temperature Sensor |
| 3. Selective Catalytic Reduction (SCR Catalyst) Inlet Temperature Sensor | 9. Selective Catalytic Reduction (SCR Catalyst) Outlet NOx Sensor (microprocessor mounted) |
| 4. Diesel Oxidation Catalyst Inlet Temperature Sensor | 10. Selective Catalytic Reduction (SCR Catalyst) Inlet NOx Sensor (microprocessor mounted) |
| 5. Diesel Oxidation Catalyst Inlet Pressure Sensor | 11. 47 Pin Connector Harness |
| 6. Diesel Particulate Filter Inlet Temperature Sensor | |

Figure 5. GHG14 2V2 Two-Box Configuration

Diesel Oxidation Catalyst, Diesel Particulate Filter Mounted Horizontally, Selective Catalytic Reduction (SCR Catalyst) Mounted Vertically

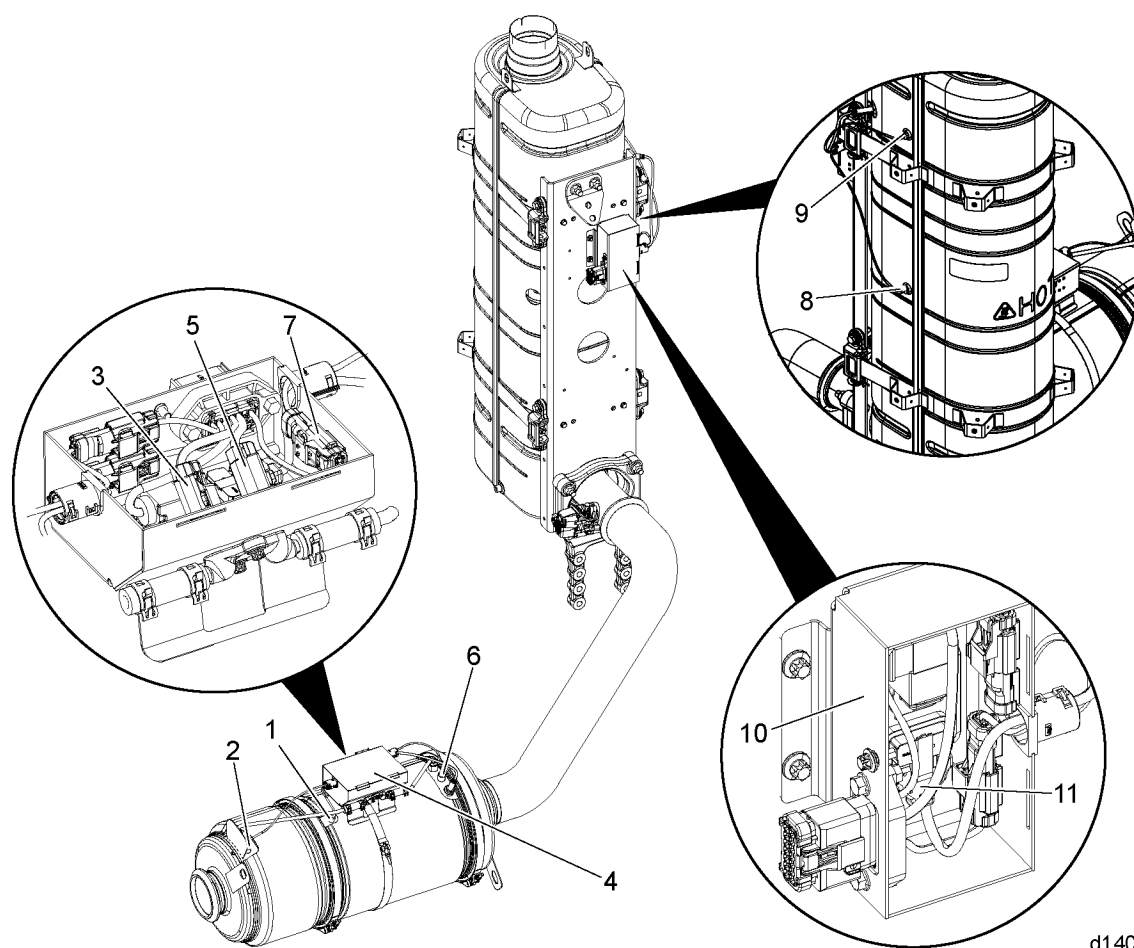
Sensor locations on the Two-Box configuration are shown below:



1. Diesel Particulate Filter Inlet Temperature Sensor
2. Diesel Oxidation Catalyst Inlet Temperature Sensor
3. Diesel Oxidation Catalyst Inlet Pressure Sensor
4. Diesel Particulate Filter Sensor Box
5. Diesel Particulate Filter Outlet Pressure Sensor
6. Diesel Particulate Filter Outlet Temperature Sensor

7. Selective Catalytic Reduction (SCR Catalyst) Outlet NOx Sensor (microprocessor mounted)
8. Selective Catalytic Reduction (SCR Catalyst) Inlet Temperature Sensor Port
9. Selective Catalytic Reduction (SCR Catalyst) Outlet Temperature Sensor Port
10. Selective Catalytic Reduction (SCR Catalyst) Sensor Box
11. Selective Catalytic Reduction (SCR Catalyst) Outlet NOx Sensor (microprocessor mounted)

Figure 6. 2HV Two-Box Configuration



d140169a

- | | |
|--|---|
| 1. Diesel Particulate Filter Inlet Temperature Sensor | 7. Selective Catalytic Reduction (SCR Catalyst) Outlet NOx Sensor (microprocessor mounted) |
| 2. Diesel Oxidation Catalyst Inlet Temperature Sensor | 8. Selective Catalytic Reduction (SCR Catalyst) Inlet Temperature Sensor Port |
| 3. Diesel Oxidation Catalyst Inlet Pressure Sensor | 9. Selective Catalytic Reduction (SCR Catalyst) Outlet Temperature Sensor Port |
| 4. Diesel Particulate Filter Sensor Box | 10. Selective Catalytic Reduction (SCR Catalyst) Sensor Box |
| 5. Diesel Particulate Filter Outlet Pressure Sensor | 11. Selective Catalytic Reduction (SCR Catalyst) Outlet NOx Sensor (microprocessor mounted) |
| 6. Diesel Particulate Filter Outlet Temperature Sensor | |

Figure 7. GHG14 2HV Two-Box Configuration