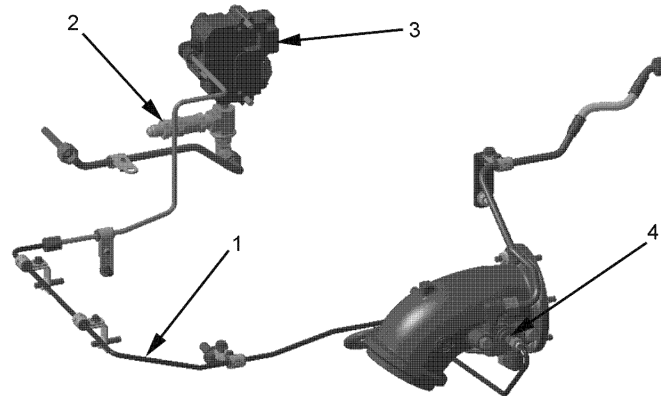


4.11.1 Description and Operation of the Doser Block Assembly

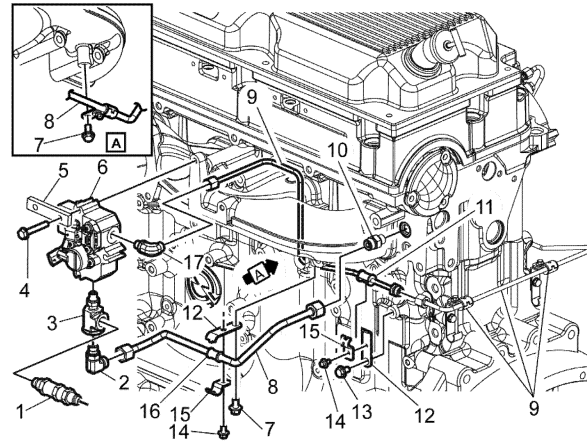
The doser block assembly is designed with the fuel injector mounted in an elbow in the exhaust system and the doser control mounted on the intake manifold side of the engine. The diesel fuel pressure is regulated to the doser where it is injected into the exhaust stream and circulated into the Aftertreatment Device (ATD).



46117

1. Dosing Fuel Line
2. Fuel Pressure Regulator
3. Doser Block Assembly
4. Fuel Doser Valve

Figure 1. Doser Block Assembly /Fuel Doser Valve and Related Parts



48085

1. Regulator
2. Elbow
3. Fitting
4. Bolt
5. Bracket
6. Doser Valve
7. Bolt
8. Fuel Return Line
9. Doser Fuel Line
10. Fitting
11. Bushing

- 12. Bracket
- 13. Bolt
- 14. Bolt
- 15. Bracket
- 16. Bushing

Figure 2. Doser Valve and Related Parts

Printed Sun Aug 09 2015 20:47:02
GMT-0700 (Pacific Daylight Time)

Copyright © 2015 by Detroit Diesel Corporation. All rights reserved.

Last updated on 2014-05-22