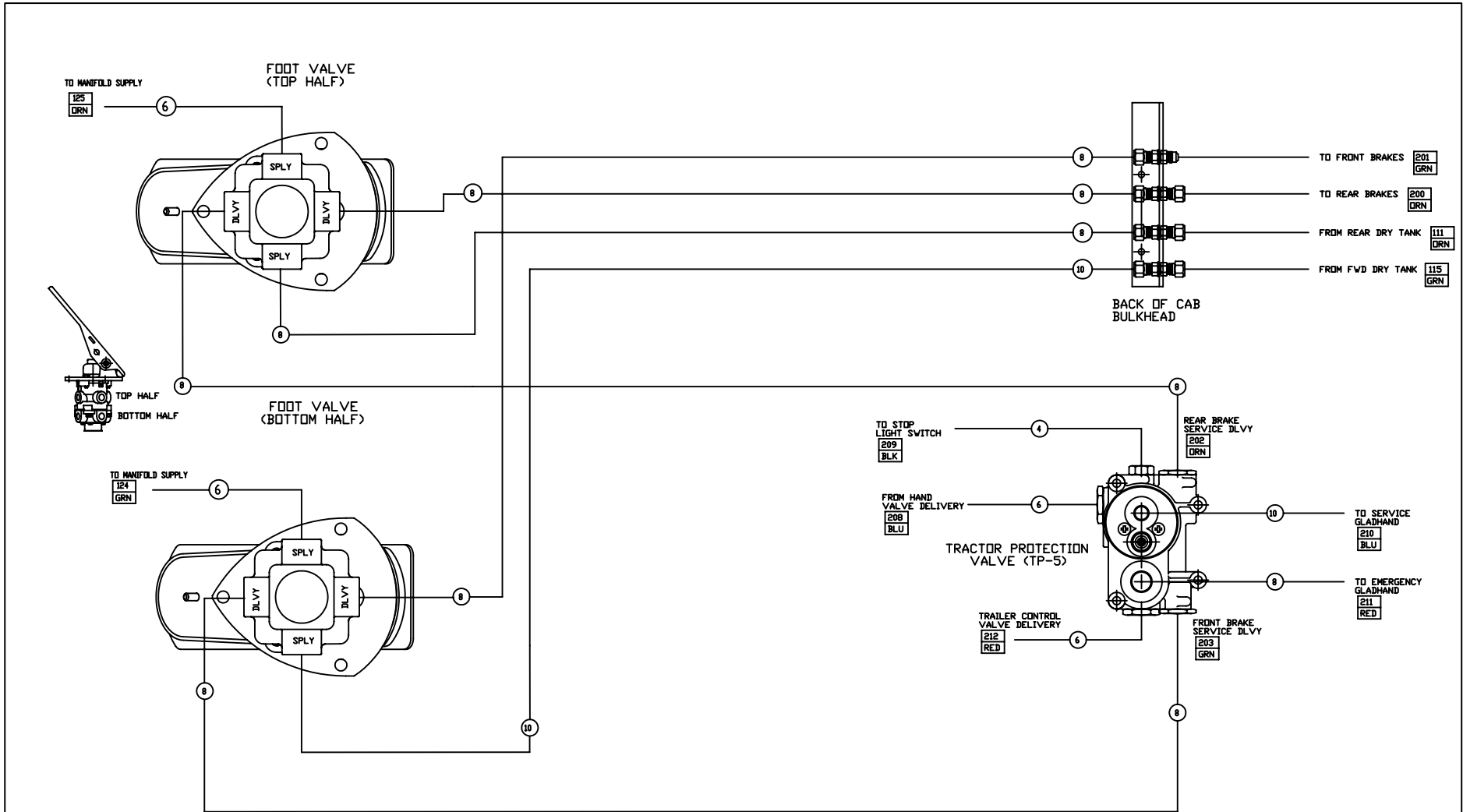


DASH NO.	TRAILER CONNECTIONS	HAND VALVE	SPECIAL CONDITIONS
001	WITH	PLUMBED TO TRAILER BRAKES ONLY	NONE
002	WITHOUT	WITHOUT	NONE
003	WITH	PLUMBED TO TRAILER AND REAR TRUCK BRAKES	NONE
004	WITHOUT	PLUMBED TO ALL TRUCK BRAKES	NONE
005	WITHOUT	PLUMBED TO REAR TRUCK BRAKES ONLY	NONE
006	WITH	WITHOUT	NONE
007	WITH	PLUMBED TO ALL BRAKES	NONE
008	WITH	PLUMBED TO TRAILER BRAKES ONLY	AIR TOGGLE PLUMBED TO ALL TRUCK BRAKES
009	WITH	WITHOUT	AIR TOGGLE PLUMBED TO ALL TRUCK BRAKES



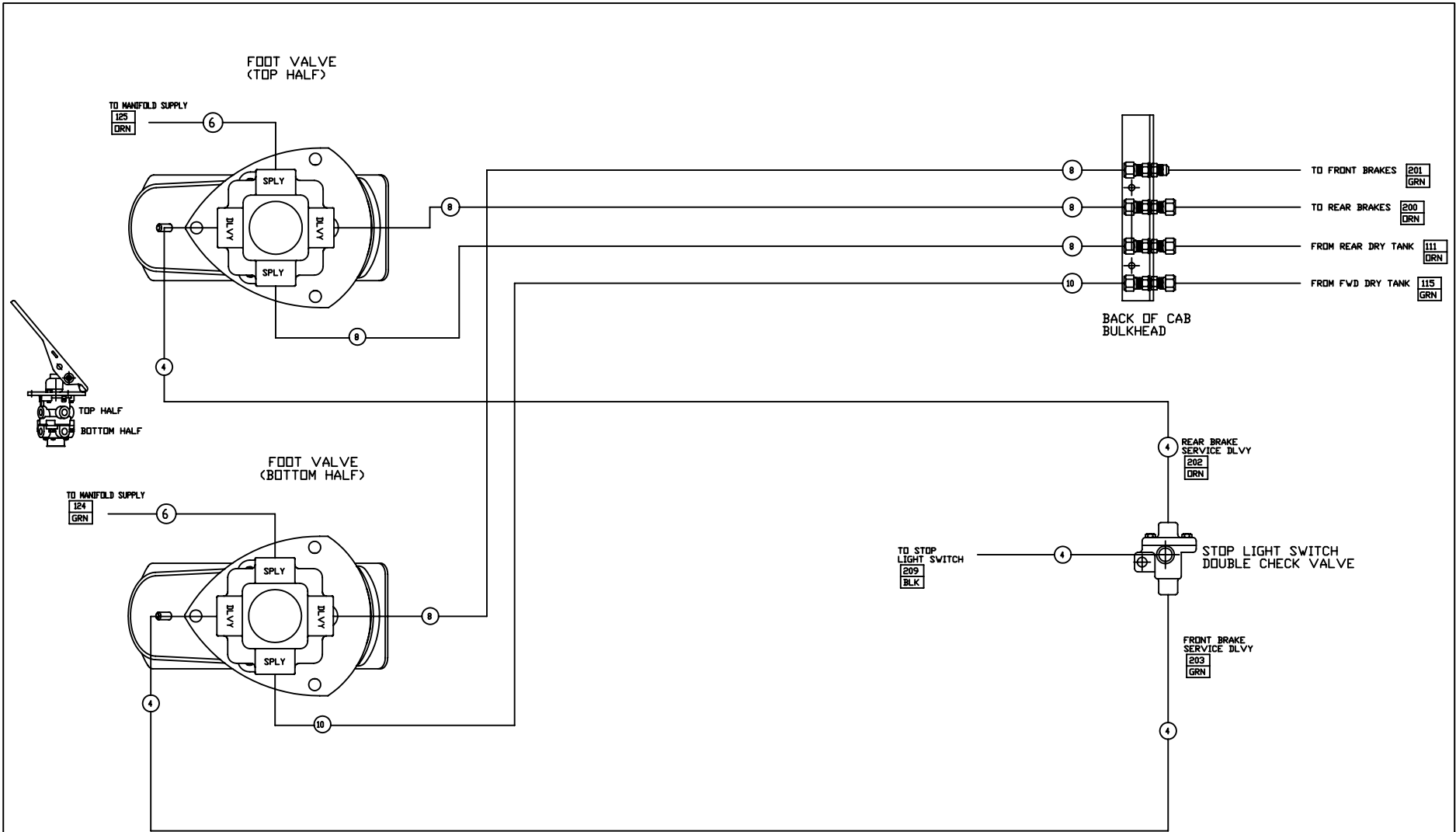
NOTES:

- 1) APPLICATION:
  - WITH TRAILER CONNECTIONS
  - WITH HAND VALVE PLUMBED
  - TO TRAILER BRAKES ONLY
- WITH ONE OF THE FOLLOWING:
  - WITH SBM VALVE V/O ABS
  - W/ ABS

2) BALLOONS INDICATE HOSE SIZE

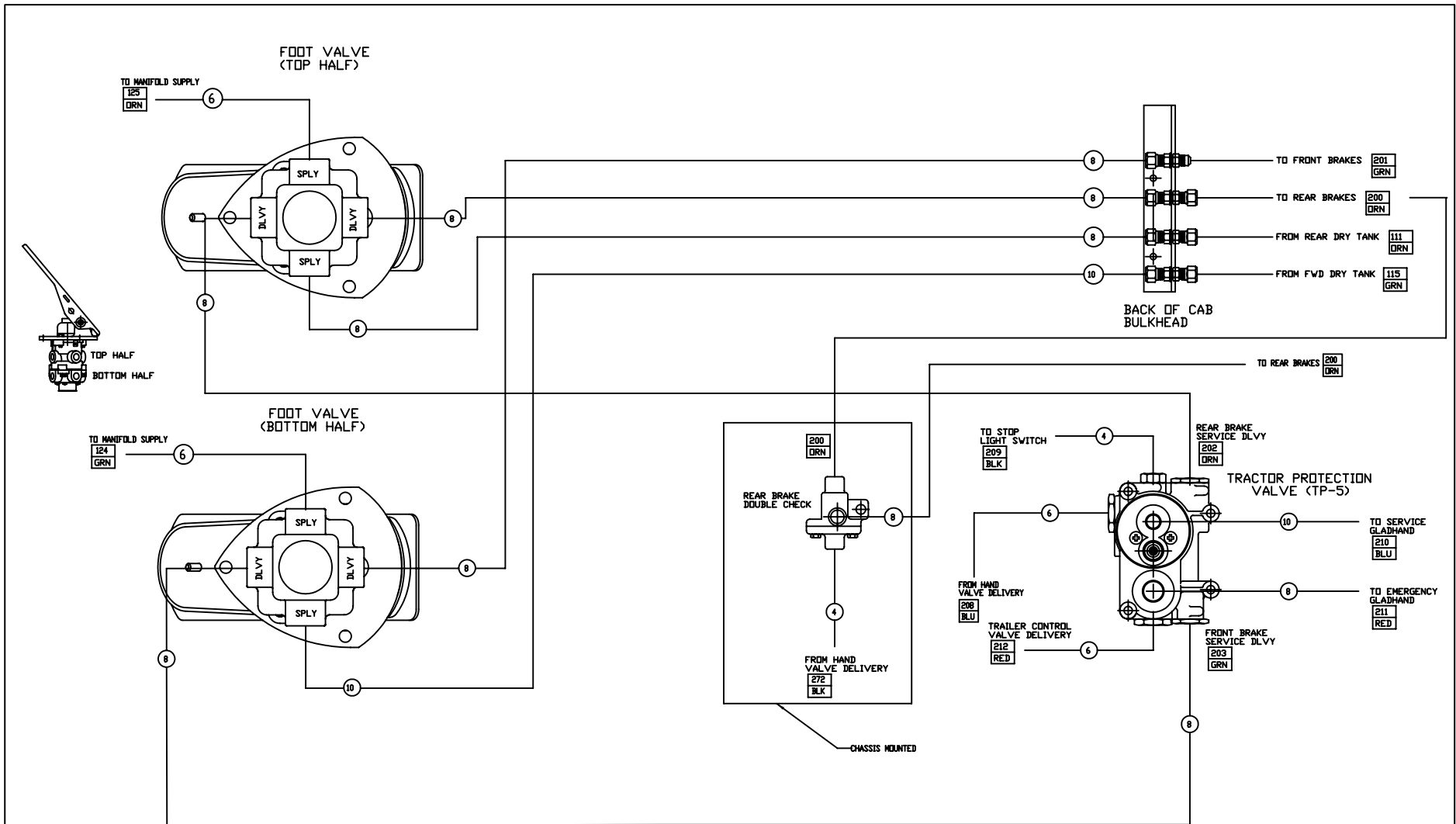
3) BOXES INDICATE HOSE NUMBER PER SK 18184

VARIATION G94-6009-001



- NOTES:
- 1) APPLICATION:
    - W/O ABS
    - W/O TRAILER CONNECTIONS
    - W/O HAND VALVE
  - 2) BALLOONS INDICATE HOSE SIZE
  - 3) BOXES INDICATE HOSE NUMBER PER SK 18184

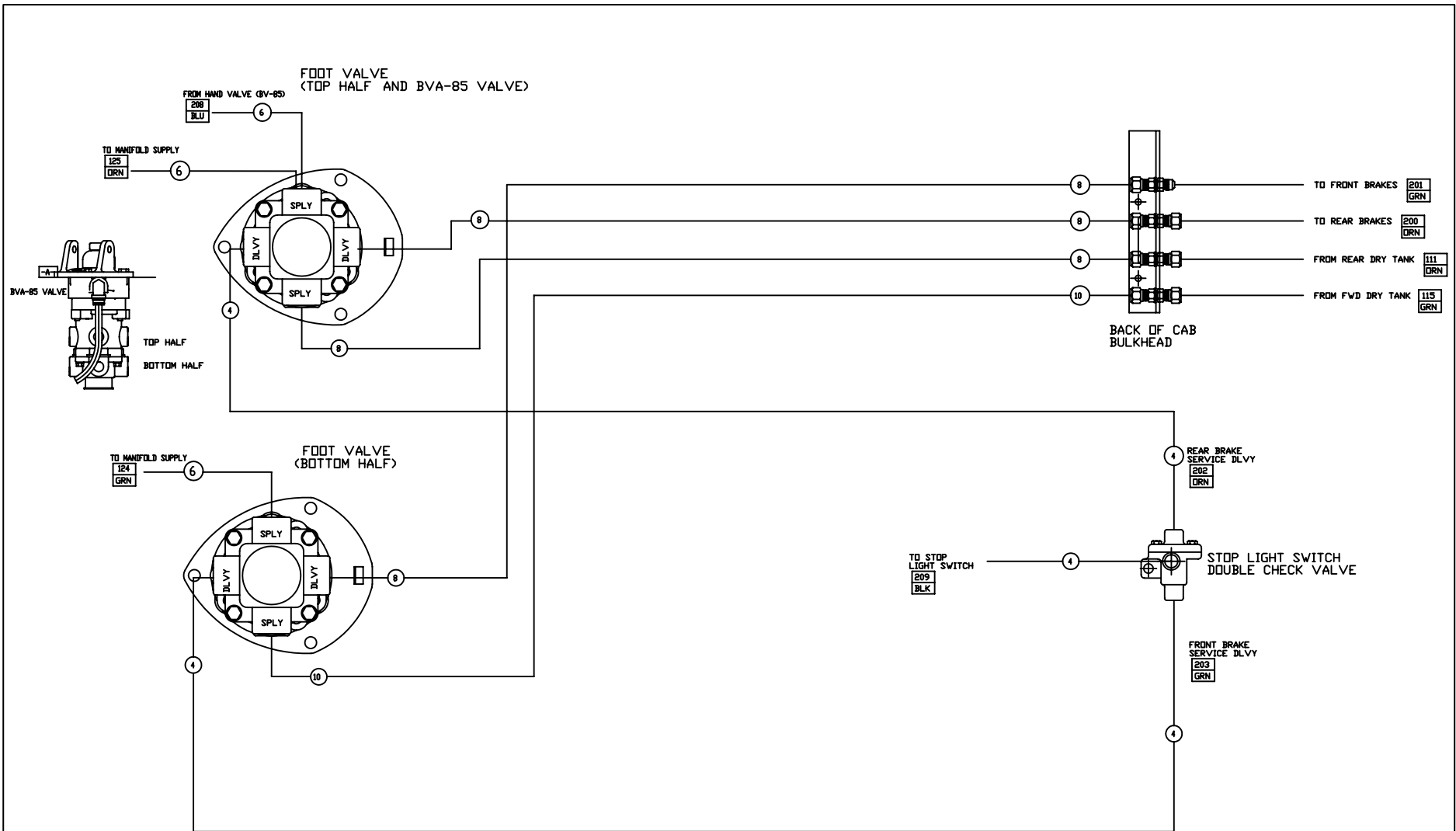
VARIATION G94-6009-002



NOTES:

- 1) APPLICATION  
 -W/O ABS  
 -WITH TRAILER CONNECTIONS  
 -WITH HAND VALVE PLUMBED TO TRAILER BRAKES AND REAR TRUCK BRAKES
- 2) BALLOONS INDICATE HOSE SIZE
- 3) BOXES INDICATE HOSE NUMBER PER SK 18184

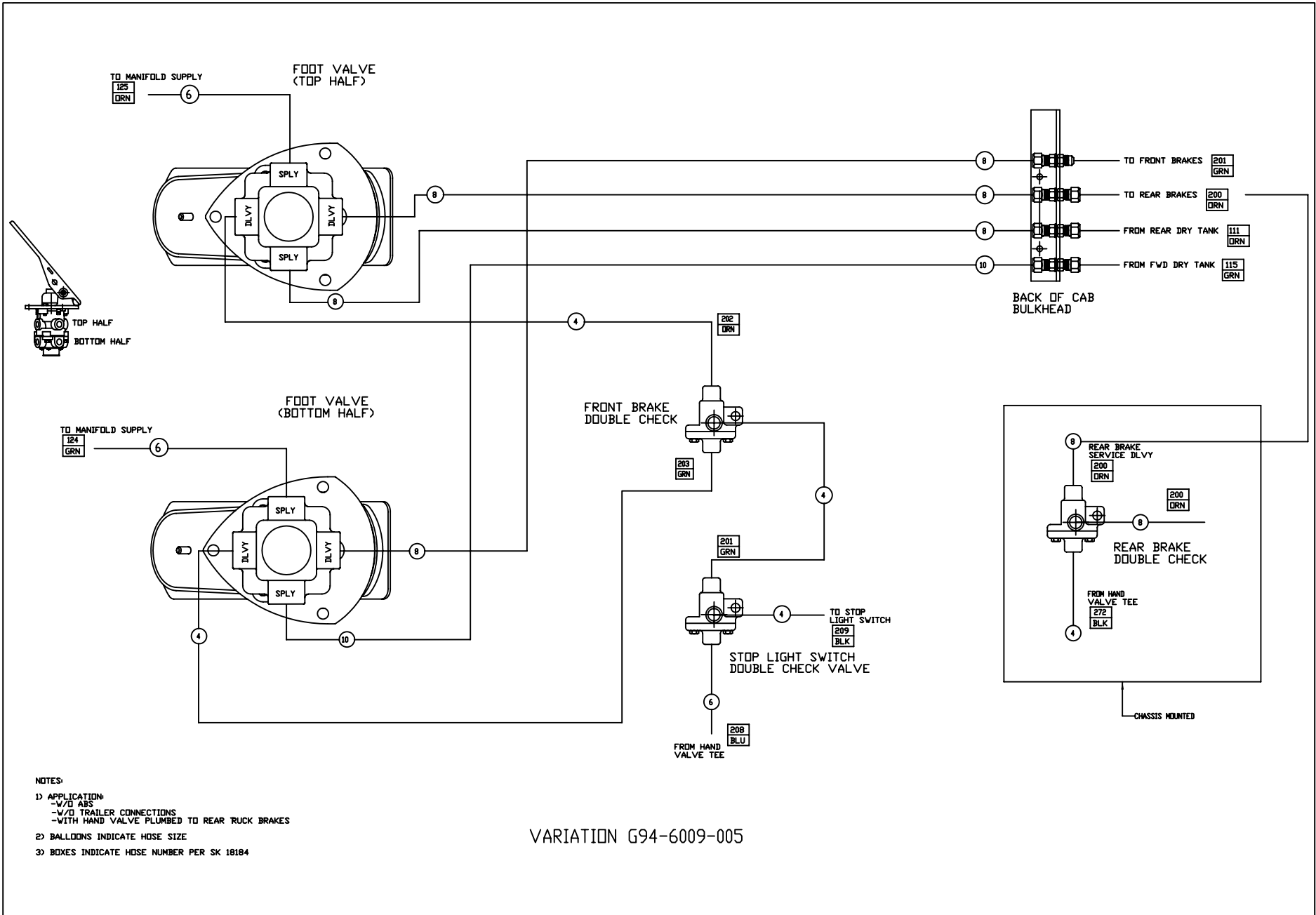
VARIATION G94-6009-003

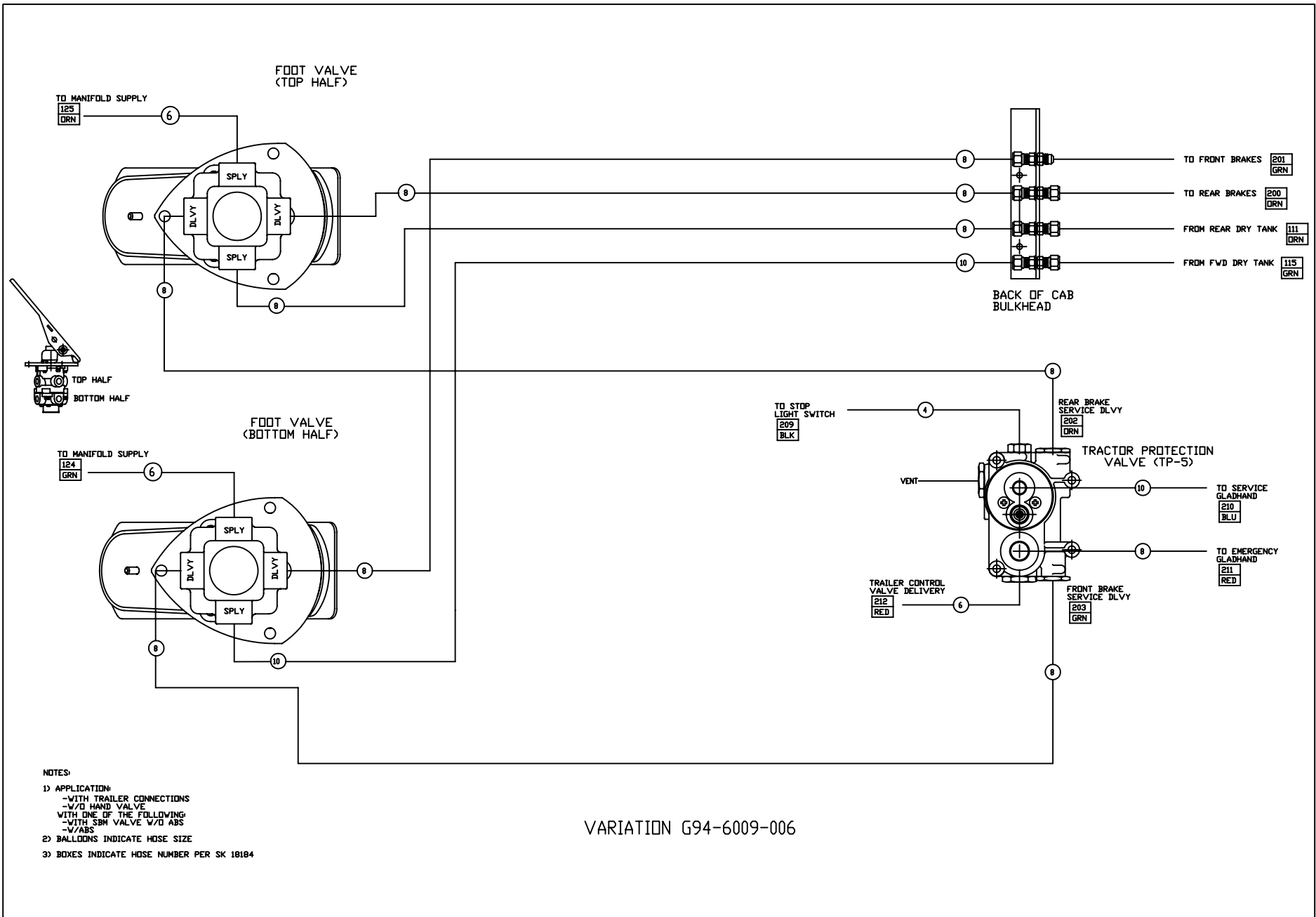


NOTES:

- 1) APPLICATION
  - W/O ABS
  - W/O TRAILER CONNECTIONS
  - W/ HAND VALVE PLUMBED TO ALL BRAKES
- 2) BALLOONS INDICATE HOSE SIZE
- 3) BOXES INDICATE HOSE NUMBER PER SK 10104

VARIATION G94-6009-004





VARIATION G94-6009-006





