

WIRE INFORMATION FOR HARNESS: L92-6032-0000

LAYER	CIRCUIT	FROM				TO				SIZE (mm ²)	WIRE TWIST	C OF C	WIRE TYPE	DESCRIPTION
		REF_DES	CONNECTOR	PIN	PLATE	REF_DES	CONNECTOR	PIN	PLATE					
9ZZZ	WHT2100-241	P241	P20-6137	9		242	SPLICE	1		3.0		TXL	HEAD LP GND	
9ZZZ	WHT2100-242	P241	P20-6137	10		242	SPLICE	1		3.0		TXL	HEAD LP GND	
9ZZZ	WHT2110-243	242	SPLICE	1		J244	P20-1231	6		2.0		TXL	LH HEAD LP GND	
9ZZZ	WHT2110-244	242	SPLICE	1		J244	P20-1231	8		2.0		TXL	LH HEAD LP GND	
9ZZZ	WHT2110-247	242	SPLICE	1		J245	P20-1231	8		2.0		TXL	RH HEAD LP GND	
9ZZZ	WHT2110-248	242	SPLICE	1		J245	P20-1231	6		2.0		TXL	RH HEAD LP GND	
9ZZZ	WHT2412-241	242	SPLICE	1		P242	16-05514	C		2.0		TXL	LH ST1 GND	
9ZZZ	WHT2412-243	242	SPLICE	1		P243	16-05514	C		2.0		TXL	RH ST1 GND	
9ZZZ	YEL2111-241	P241	P20-6137	1		J244	P20-1231	7		2.0		TXL	LH LOW BEAM HEADLAMP	
9ZZZ	YEL2112-241	P241	P20-6137	2		J245	P20-1231	7		2.0		TXL	RH LOW BEAM HEADLAMP	
9ZZZ	YEL2121-241	P241	P20-6137	3		J244	P20-1231	1		2.0		TXL	LH HIGH BEAM HEADLAMP	
9ZZZ	YEL2122-241	P241	P20-6137	4		J245	P20-1231	1		2.0		TXL	RH HIGH BEAM HEADLAMP	
9ZZZ	YEL2311-241	P241	P20-6137	5		246	SPLICE	1		2.0		TXL	LH TURN LPS	
9ZZZ	YEL2311-242	246	SPLICE	1		P242	16-05514	B		2.0		TXL	LH TURN LPS	
9ZZZ	YEL2311-243	246	SPLICE	1		J244	P20-1231	2		2.0		TXL	LH TURN LPS	
9ZZZ	YEL2311-244	246	SPLICE	1		J244	P20-1231	4		2.0		TXL	LH TURN LPS	
9ZZZ	YEL2312-241	P241	P20-6137	6		247	SPLICE	1		2.0		TXL	RH TURN LPS	
9ZZZ	YEL2312-242	247	SPLICE	1		P243	16-05514	B		2.0		TXL	RH TURN LPS	
9ZZZ	YEL2312-243	247	SPLICE	1		J245	P20-1231	4		2.0		TXL	RH TURN LPS	
9ZZZ	YEL2312-244	247	SPLICE	1		J245	P20-1231	2		2.0		TXL	RH TURN LPS	
9ZZZ	YEL2313-241	P241	P20-6137	11		J244	P20-1231	9		2.0		TXL	LH TURN/ DRL	
9ZZZ	YEL2314-241	P241	P20-6137	12		J245	P20-1231	9		2.0		TXL	RH TURN/ DRL	
9ZZZ	YEL2412-241	P241	P20-6137	7		243	SPLICE	1		2.0		TXL	MARKER LPS	
9ZZZ	YEL2412-242	243	SPLICE	1		P242	16-05514	A		2.0		TXL	LH MARKER LPS	
9ZZZ	YEL2412-243	243	SPLICE	1		P243	16-05514	A		2.0		TXL	RH MARKER LPS	
9ZZZ	YEL2412-244	243	SPLICE	1		J244	P20-1231	3		2.0		TXL	MARKER LPS	
9ZZZ	YEL2412-245	243	SPLICE	1		J245	P20-1231	3		2.0		TXL	MARKER LPS	
9ZZZ	YEL2412-246	243	SPLICE	1		J244	P20-1231	5		2.0		TXL	MARKER LPS	
9ZZZ	YEL2412-247	243	SPLICE	1		J245	P20-1231	5		2.0		TXL	MARKER LPS	
5000	BLU4900-241	P053	P20-1238-1202D1	1		P241	P20-6137	13		1.0		TXL	HOOD SWITCH SIGNAL	
5000	GRN4500-241	P053	P20-1238-1202D1	2		P241	P20-6137	14		1.0		TXL	HOOD SWITCH GROUND	
4000	WHT5921-241	241	SPLICE	1		P246	P20-1236-1202N	1		2.0		TXL	LH MIRROR HT GND	
4000	WHT5921-242	241	SPLICE	1		P247	P20-1236-1202N	1		2.0		TXL	RH MIRROR HT GND	
4000	WHT5921-245	P241	P20-6137	8		241	SPLICE	1		2.0		TXL	MIRROR HEAT GND	
4000	YEL5921-241	P241	P20-6137	14		P246	P20-1236-1202N	2		2.0		TXL	LH MIRROR HEAT 15A	
4000	YEL5921-242	P241	P20-6137	13		P247	P20-1236-1202N	2		2.0		TXL	RH MIRROR HEAT 15A	
3000	WHT5921-244	P241	P20-6137	8		P247	P20-1236-1202N	1		2.0		TXL	RH MIRROR HT GND	
3000	YEL5921-242	P241	P20-6137	13		P247	P20-1236-1202N	2		2.0		TXL	RH MIRROR HEAT 15A	
2000	WHT5921-243	P241	P20-6137	8		P246	P20-1236-1202N	1		2.0		TXL	LH MIRROR HT GND	
2000	YEL5921-241	P241	P20-6137	14		P246	P20-1236-1202N	2		2.0		TXL	LH MIRROR HEAT 15A	

L92-6032-0000

SEE HARNESS VARIATION TABLE D
SEE HARNESS VARIATION TABLE E
SEE HARNESS VARIATION TABLE F
SEE HARNESS VARIATION TABLE G

LAYER	DESCRIPTION	WEIGHT
-9ZZZ	COMMON BASE	E 0.50
-2000	WITH LH HEATED HOOD MIRROR	E 0.05
-3000	WITH RH HEATED HOOD MIRROR	E 0.05
-4000	WITH LH & RH HEATED HOOD MIRRORS	E 0.10
-5000	WITH AUTO START	E 0.05

REF_DES	LABEL	LABEL REQUIRED
J244	LH HEADLAMP	NO
J245	RH HEADLAMP	NO
P242	LH SIDE TURN	NO
P243	RH SIDE TURN	NO
P241	CHASSIS HARN	YES
P246	LH HOOD MIRROR	NO
P247	RH HOOD MIRROR	NO
P053	AUTO START HOOD SWITCH	NO

- NOTES:
- USE ON CHASSIS EQUIPPED WITH PETERBILT 2.1M AERODYNAMIC HOODS, WITH OR WITHOUT HIGH INTENSITY DISCHARGE LIGHTING, AND WITH OR WITHOUT DAYTIME RUNNING LAMPS.
 - ASSEMBLE PER PACCAR CPP0349.
 - HARNESS SHALL CONFORM TO R026-170-146.
 - ALL TERMINALS TO BE "STANDARD" PLATING UNLESS NOTED OTHERWISE IN WIRE INFORMATION TABLE.
 - HARNESS COVERINGS PER TABLE C.
 - CDS0124 SHALL BE APPLIED FOR CIRCUIT IDENTIFICATION.
 - EMISSION-RELATED PART CODE: [N], SEE CPS0374 FOR REQUIREMENTS
 - PAPER TAGS SHALL BE APPLIED TO THE HARNESS WITHIN 75mm FROM THE BASE OF THE CONNECTOR AND SHOULD BE CLEARLY VISIBLE UPON COMPLETION OF THE HARNESS. PRINT LABELS WITH THE DESIGNATIONS LISTED IN TABLE B. LABELS TO BE WHITE UNLESS OTHERWISE NOTED.
 - HARNESS PART NUMBER IS GENERATED BY THE HARNESS VARIATION TABLE.
 - SUPERSEDES P92-5110-0000.

PROD	✓
SERV	✓

VERSION		DESCRIPTION
I		PRODUCTION

VERSION	DESCRIPTION
I	PRODUCTION

VAR	LAYERS	USAGE
1	9ZZZ	WITHOUT HEATED MIRRORS
2	9ZZZ + 2000	WITH LH HEATED MIRROR
3	9ZZZ + 3000	WITH RH HEATED MIRROR
4	9ZZZ + 4000	WITH LH & RH HEATED MIRRORS
5	9ZZZ + 5000	WITH AUTO START AND WITHOUT HEATED MIRRORS

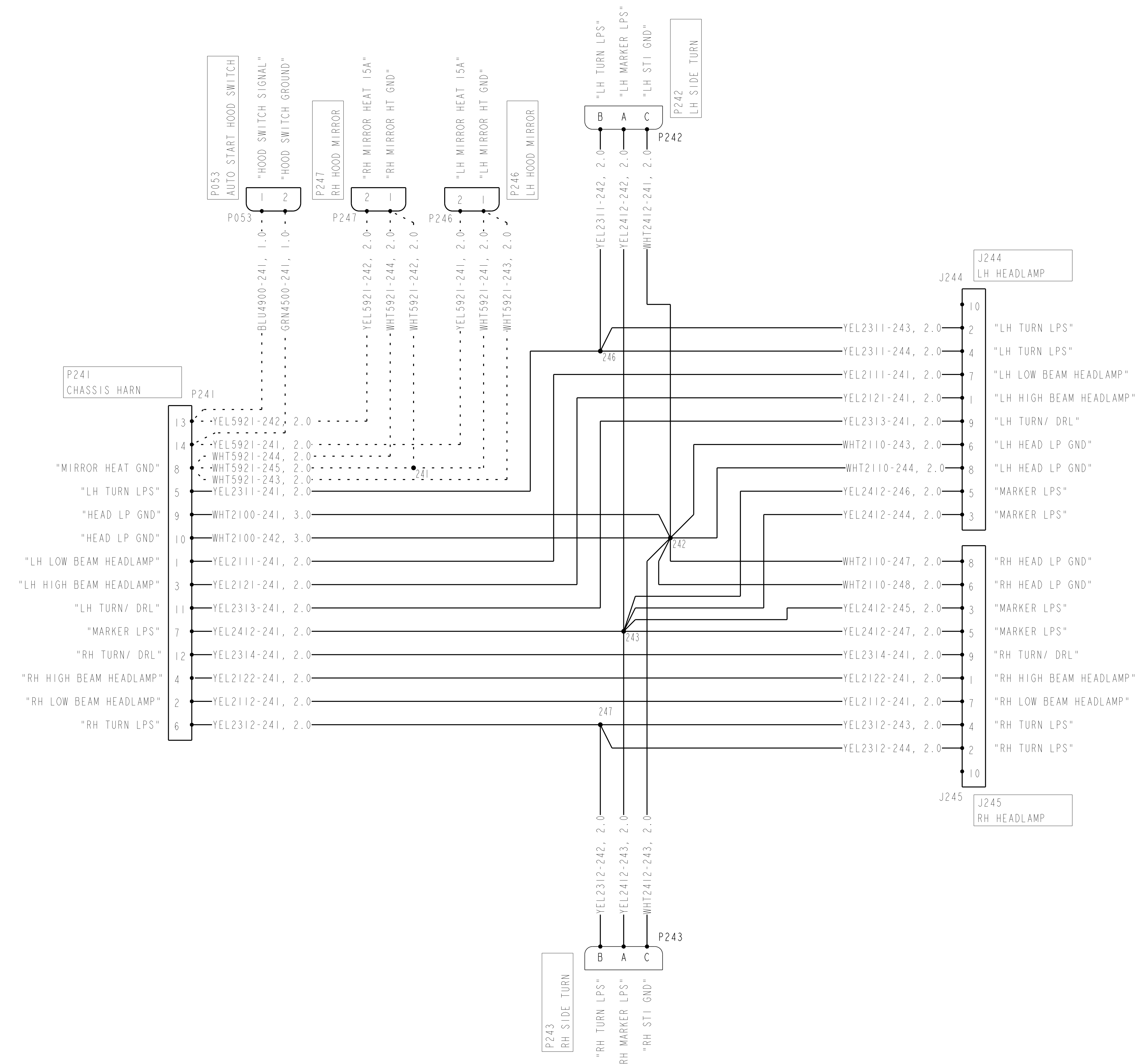
VAR	OMIT CIRCUITS	OMIT COMPONENTS	USAGE
0	NONE	NONE	NONE

VAR	OMIT CIRCUITS	OMIT COMPONENTS	USAGE
0	NONE	NONE	NONE

LAYER	QTY	ITEM	PART NUMBER	PRODUCT DESCRIPTION	MATERIAL
9ZZZ	1	A267	P16-1003-2102	CLIP - CONNECTOR	
9ZZZ	1	A262	P16-1001-004	CLIP - TWO PIECE EDGE CLIP	
4000	1	A261	P16-1006-100	CLIP - FIR TREE ASSY	
2000	1	A261	P16-1006-100	CLIP - FIR TREE ASSY	
4000	1	A260	P16-1006-100	CLIP - FIR TREE ASSY	
2000	1	A260	P16-1006-100	CLIP - FIR TREE ASSY	
4000	1	A259	P16-1001-004	CLIP - TWO PIECE EDGE CLIP	
2000	1	A259	P16-1001-004	CLIP - TWO PIECE EDGE CLIP	
9ZZZ	1	A258	P16-1001-004	CLIP - TWO PIECE EDGE CLIP	
9ZZZ	1	A257	P16-1001-004	CLIP - TWO PIECE EDGE CLIP	
9ZZZ	1	A256	P16-1001-004	CLIP - TWO PIECE EDGE CLIP	
9ZZZ	1	A255	P16-1006-100	CLIP - FIR TREE ASSY	
9ZZZ	1	A254	P16-1006-100	CLIP - FIR TREE ASSY	
9ZZZ	1	A253	P16-1006-100	CLIP - FIR TREE ASSY	
9ZZZ	1	A252	P16-1006-100	CLIP - FIR TREE ASSY	
9ZZZ	1	A251	P16-1001-004	CLIP - TWO PIECE EDGE CLIP	
4000	1	A250	P16-1006-100	CLIP - FIR TREE ASSY	
3000	1	A250	P16-1006-100	CLIP - FIR TREE ASSY	
4000	1	A249	P16-1006-100	CLIP - FIR TREE ASSY	
3000	1	A249	P16-1006-100	CLIP - FIR TREE ASSY	
4000	1	A248	P16-1001-004	CLIP - TWO PIECE EDGE CLIP	
3000	1	A248	P16-1001-004	CLIP - TWO PIECE EDGE CLIP	
9ZZZ	1	A247	P16-1001-004	CLIP - TWO PIECE EDGE CLIP	
9ZZZ	1	A246	P16-1001-004	CLIP - TWO PIECE EDGE CLIP	
9ZZZ	1	A245	P16-1001-004	CLIP - TWO PIECE EDGE CLIP	
9ZZZ	1	A244	P16-1006-100	CLIP - FIR TREE ASSY	
9ZZZ	1	A243	P16-1006-100	CLIP - FIR TREE ASSY	
9ZZZ	1	A242	P16-1006-100	CLIP - FIR TREE ASSY	
9ZZZ	1	A241	P16-1006-100	CLIP - FIR TREE ASSY	
9ZZZ	AR	-	K344-813	CONVOLUTED TUBING	
9ZZZ	AR	T1	VINYL TAPE	ADHESIVE BACKED, YELLOW	
9ZZZ	AR	-	VINYL TAPE	ADHESIVE BACKED, BLACK	
9ZZZ	I	P243	16-05514	BLACK, DEUTSCH DT SERIES	
9ZZZ	I	P242	16-05514	BLACK, DEUTSCH DT SERIES	
9ZZZ	I	P241	P20-6137	BLACK, FRAMATONE, APEX 280 SERIES, SEALED	
9ZZZ	I	J245	P20-1231	BLACK, TYCO, FEP 2.8 SERIES, SEALED	
9ZZZ	I	J244	P20-1231	BLACK, TYCO, FEP 2.8 SERIES, SEALED	
5000	I	P053	P20-1238-1202D1	GRAY, DEUTSCH DTM SERIES, -2WAY	
4000	I	P247	P20-1236-1202N	BLACK, TYCO, AMPSEAL 16 SERIES, SEALED	
4000	I	P246	P20-1236-1202N	BLACK, TYCO, AMPSEAL 16 SERIES, SEALED	
3000	I	P247	P20-1236-1202N	BLACK, TYCO, AMPSEAL 16 SERIES, SEALED	
2000	I	P246	P20-1236-1202N	BLACK, TYCO, AMPSEAL 16 SERIES, SEALED	

1. THIS DRAWING AND THE INFORMATION CONTAINED HEREIN ARE PROPRIETARY TO PACCAR, INC. UNLESS OTHERWISE NOTED AND SHALL NOT BE REPRODUCED, COPIED OR DISCLOSED IN WHOLE OR IN PART, OR USED FOR MANUFACTURE OR FOR OTHER PURPOSE WITHOUT THE WRITTEN PERMISSION OF PACCAR.	TOLERANCES UNLESS OTHERWISE SPECIFIED ANGLE: ± 0° (XX) = ± 0° (X.X) = ± 0.1	THIRD ANGLE PROJECTION 	PACCAR	DRAWING L92-6032-0000	REV A
2. DIMENSIONING AND TOLERANCING PER PACCAR CS0108.	DO NOT SCALE DRAWING	DIMENSION UNITS: MILLIMETERS	HARNESS - 2.1M AERO HOOD		
3. SHOW ALL DIMENSIONS FROM SHOWN DIMENSION LINES.	SCALE: 1:10				
4. PART IDENTIFICATION AND TRACEABILITY REQUIREMENTS TO COMPLY WITH PACCAR CS0108.	DRAWING VERSION: A.7				
5. THIS DRAWING/SPECIFICATION USES SYMBOLS TO CLASSIFY CHARACTERISTICS. THESE SYMBOLS ARE DEFINED IN THE PACCAR SUPPLIER QUALITY STANDARD.	SHEET 1 OF 7				
6. EMISSION-RELATED PART CODE: [N] SEE PACCAR CPP0374 FOR REQUIREMENTS.	DWG SIZE: AO				

USAGE NOTE:
 USE ON CHASSIS EQUIPPED WITH PETERBILT 2.1M AERODYNAMIC HOODS, WITH OR WITHOUT HIGH INTENSITY DISCHARGE LIGHTING, AND WITH OR WITHOUT DAYTIME RUNNING LAMPS.

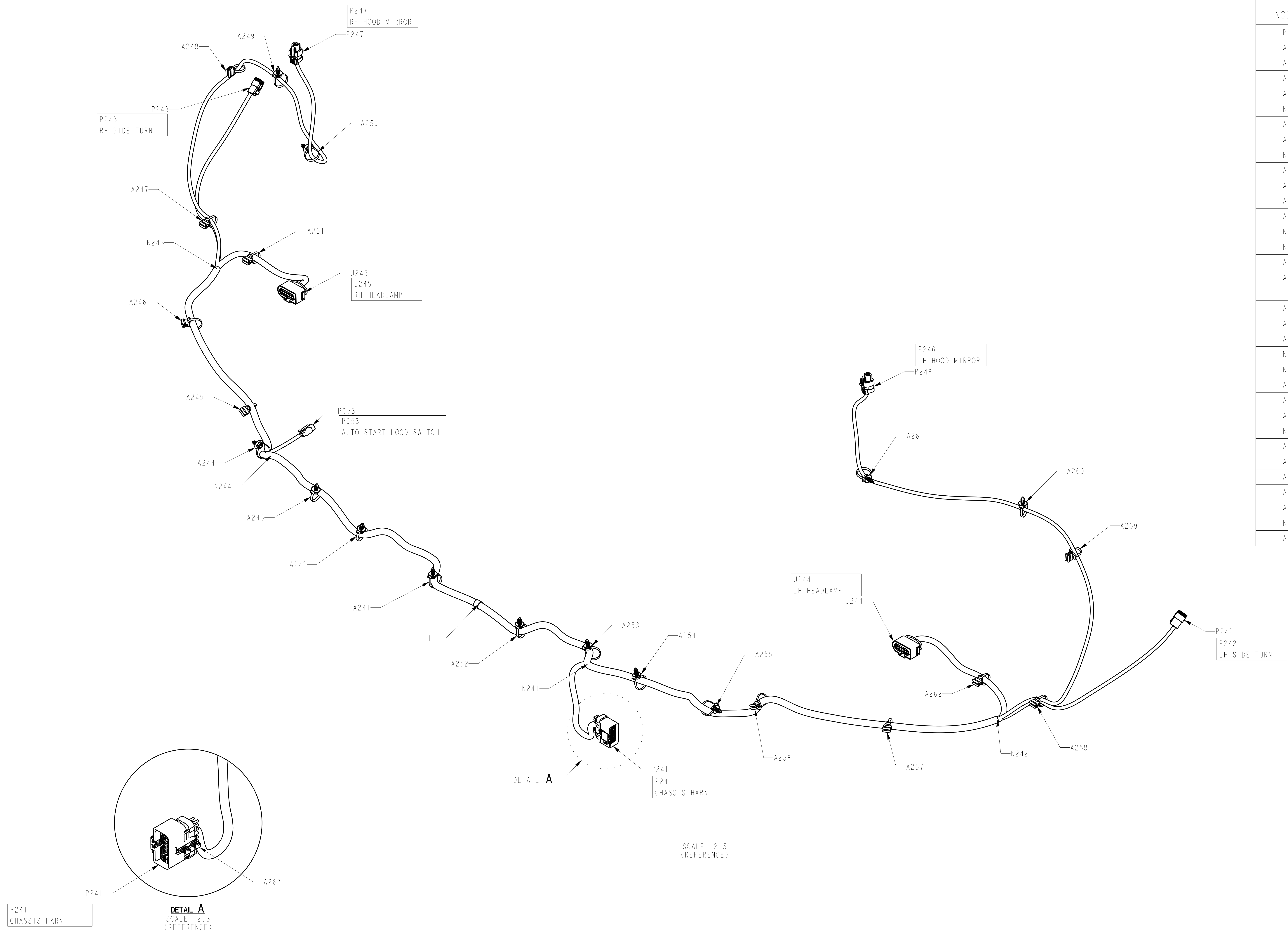


USAGE NOTE:

USE ON CHASSIS EQUIPPED WITH PETERBILT 2.1M AERODYNAMIC HOODS, WITH OR WITHOUT HIGH INTENSITY DISCHARGE LIGHTING, AND WITH OR WITHOUT DAYTIME RUNNING LAMPS.

TABLE C: ROUTING INFORMATION

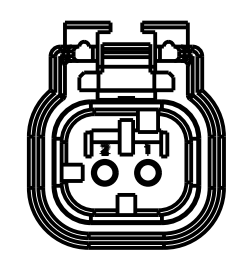
NODE 1	NODE 2	LENGTH	CONV
P246	A261	230	K344-813
A261	A260	335	K344-813
A260	A259	160	K344-813
A259	A258	365	K344-813
A258	N242	115	K344-813
N242	A262	100	K344-813
A262	J244	210	K344-813
A258	P242	340	K344-813
N242	A257	205	K344-813
A257	A256	260	K344-813
A256	A255	155	K344-813
A255	A254	170	K344-813
A254	N241	125	K344-813
N241	A253	30	K344-813
N241	P241	350	K344-813
A253	A252	175	K344-813
A252	T1	110	K344-813
T1	A241	110	K344-813
A241	A242	185	K344-813
A242	A243	145	K344-813
A243	N244	155	K344-813
N244	P053	50	K344-813
N244	A244	15	K344-813
A244	A245	155	K344-813
A245	A246	260	K344-813
A246	N243	205	K344-813
N243	A247	115	K344-813
A247	A248	365	K344-813
A248	A249	160	K344-813
A249	A250	335	K344-813
A250	P247	230	K344-813
A247	P243	340	K344-813
N243	A251	100	K344-813
A251	J245	210	K344-813



SCALE 2:5 (REFERENCE)

SCALE 2:3 (REFERENCE)

<small>UNLESS OTHERWISE NOTED THIS DRAWING AND THE INFORMATION CONTAINED HEREIN ARE PROPRIETARY TO PACCAR INC. IT SHALL NOT BE REPRODUCED, COPIED OR DISCLOSED IN WHOLE OR IN PART, OR USED FOR MANUFACTURE OR FOR OTHER PURPOSE WITHOUT THE WRITTEN PERMISSION OF PACCAR INC.</small>	TITLE	HARNES - 2.1M AERO HOOD	
	DRAWING	L92-6032-0000	REV A
	SCALE 1:10	DRAWING VERSION A, 7	SHEET 3 OF 7

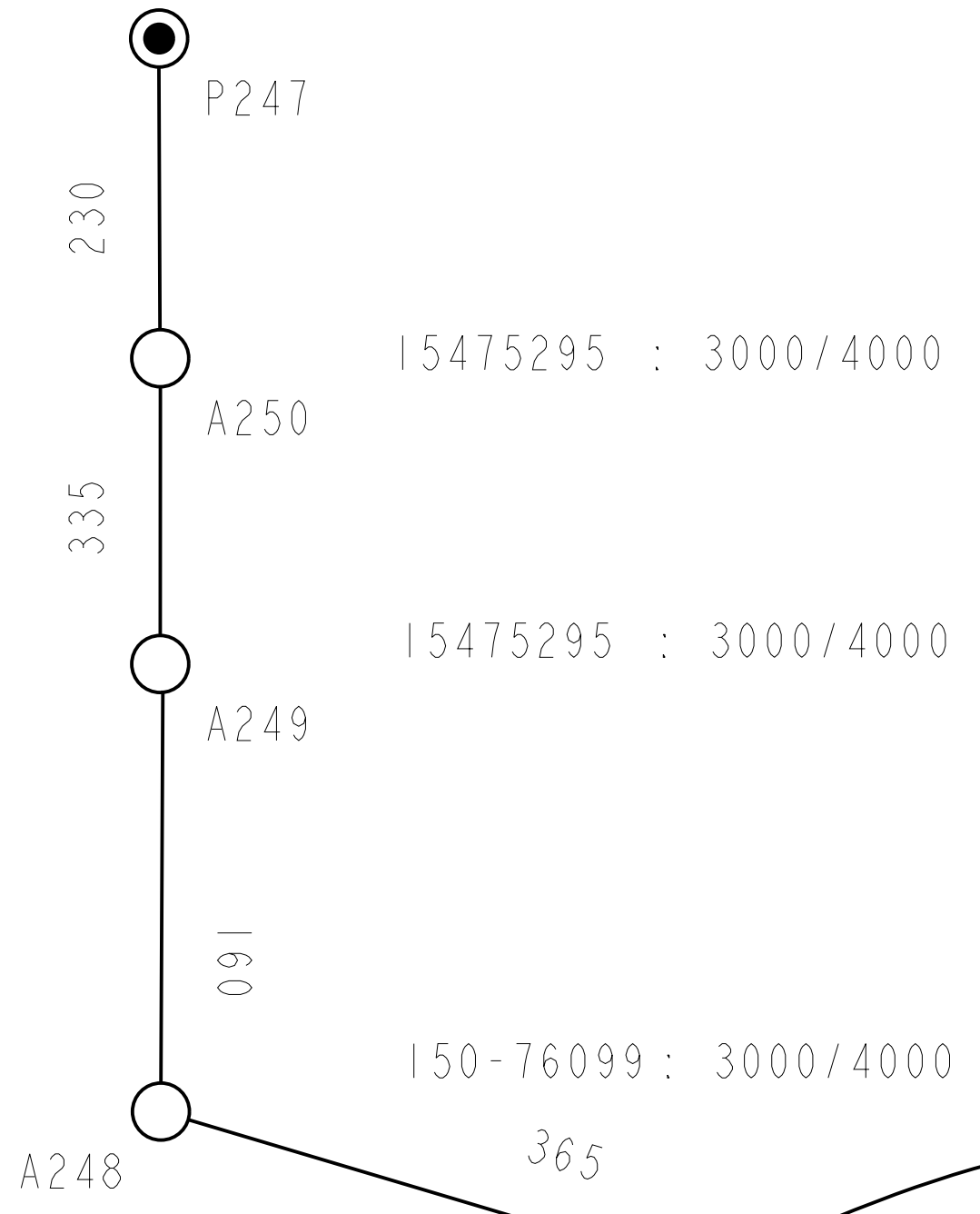


AMP #776427-1

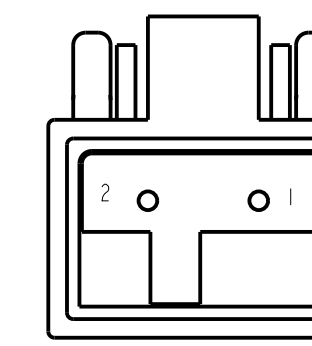
P247
RH HOOD MIRROR

1	WHT5921-242	4000
1	WHT5921-244	3000
2	YEL5921-242	3000

776427-1 : 3000/4000



BRANCH P247 NEEDS SECURED AT NODE A247 WITH CLIP #150-76099 WHEN CALLED OUT.



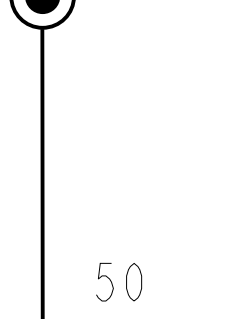
DEUTSCH #DTM06-2S
WEDGE LOCK #WM-2S

P053
AUTO START HOOD SWITCH

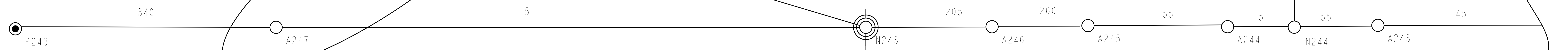
1	BLU4900-241	5000
2	GRN4500-241	5000

DTM06-2S : 5000

P053



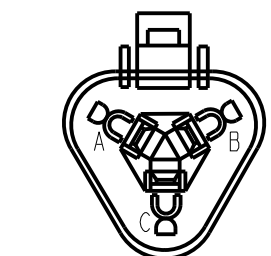
TO PAGE 5



P243
RH SIDE TURN

A	YEL2412-243	9ZZZ
B	YEL2312-242	9ZZZ
C	WHT2412-243	9ZZZ

DT06-3S-P012 : 9ZZZ



DEUTSCH #DT06-3S-P012
WEDGE LOCK #W3S-P012

N243

100

A251

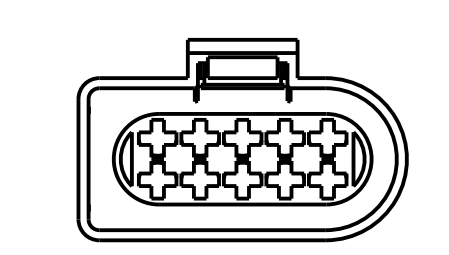
210

J245

J245
RH HEADLAMP

1	YEL2122-241	9ZZZ
2	YEL2312-244	9ZZZ
3	YEL2412-245	9ZZZ
4	YEL2312-243	9ZZZ
5	YEL2412-247	9ZZZ
6	WHT2110-248	9ZZZ
7	YEL2112-241	9ZZZ
8	WHT2110-247	9ZZZ
9	YEL2314-241	9ZZZ
10	(828922-1)	

42121500 : 9ZZZ



CONN #42121500

UNLESS OTHERWISE NOTED THIS DRAWING AND THE INFORMATION CONTAINED HEREIN ARE PROPRIETARY TO PACCAR INC. IT SHALL NOT BE REPRODUCED, COPIED OR DISCLOSED IN WHOLE OR IN PART OR USED FOR MANUFACTURE OR FOR OTHER PURPOSE WITHOUT THE WRITTEN PERMISSION OF PACCAR INC.		TITLE HARNES - 2.1M AERO HOOD
DRAWING PACCAR L92-6032-0000		REV A
SCALE 1:10	DRAWING VERSION A.7	SHEET 4 OF 7

A
DWG
SIZE
AO

247
RIGHT TURN LAMPS

L	YEL2312-242 9ZZZ	R	YEL2312-241 9ZZZ
L	YEL2312-243 9ZZZ	R	
L	YEL2312-244 9ZZZ	R	

Main Wires:
WELD1 : 9ZZZ
4007-3 : 9ZZZ

242
LIGHT GROUND

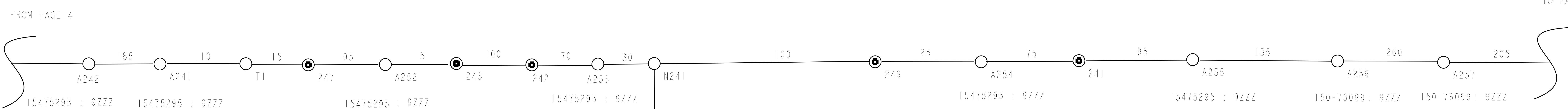
L	WHT2100-241 9ZZZ	R	WHT2110-241 9ZZZ
L	WHT2100-242 9ZZZ	R	WHT2110-248 9ZZZ
L	WHT2110-243 9ZZZ	R	WHT2412-243 9ZZZ
L	WHT2110-244 9ZZZ	R	
L	WHT2412-241 9ZZZ	R	

Main Wires:
WELD1 : 9ZZZ
4008-3 : 9ZZZ

241
MIRROR HEAT GROUND

L	WHT5921-241 4000	R	WHT5921-242 4000
L		R	WHT5921-245 4000

Main Wires:
WELD18 : 4000
4007-3 : 4000



243
MARKER LAMPS

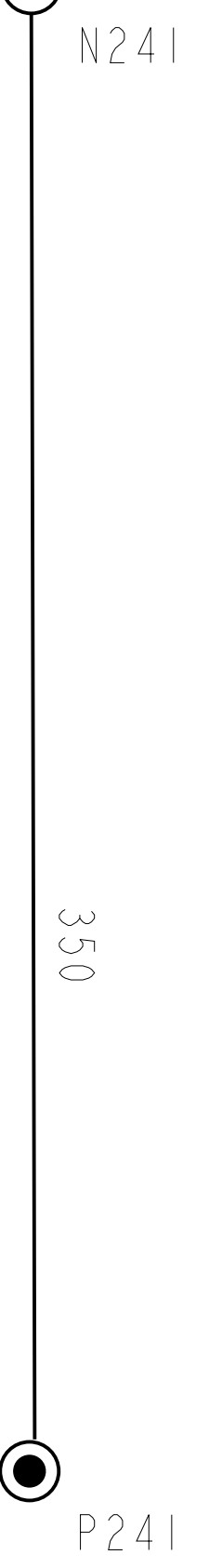
L	YEL2412-241 9ZZZ	R	YEL2412-243 9ZZZ
L	YEL2412-242 9ZZZ	R	YEL2412-245 9ZZZ
L	YEL2412-244 9ZZZ	R	YEL2412-247 9ZZZ
L	YEL2412-246 9ZZZ	R	

Main Wires:
WELD1 : 9ZZZ
4008-3 : 9ZZZ

246
LEFT TURN LAMPS

L	YEL2311-241 9ZZZ	R	YEL2311-242 9ZZZ
L		R	YEL2311-243 9ZZZ
L		R	YEL2311-244 9ZZZ

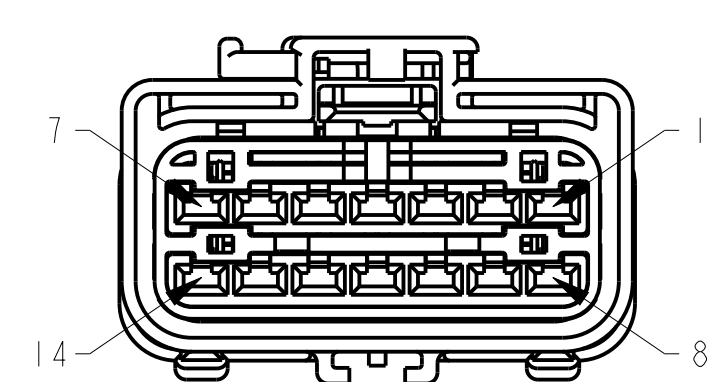
Main Wires:
WELD1 : 9ZZZ
4007-3 : 9ZZZ



P241
TO CHASSIS HARNESS

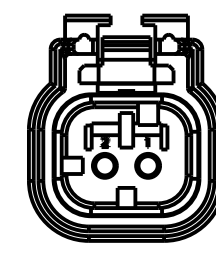
1	YEL2111-241 9ZZZ	8	WHT5921-245 4000
2	YEL2112-241 9ZZZ	9	WHT2100-241 9ZZZ
3	YEL2121-241 9ZZZ	10	WHT2100-242 9ZZZ
4	YEL2122-241 9ZZZ	11	YEL2313-241 9ZZZ
5	YEL2311-241 9ZZZ	12	YEL2314-241 9ZZZ
6	YEL2312-241 9ZZZ	13	YEL5921-242 3000
7	YEL2412-241 9ZZZ	13	BLU4900-241 5000
8	WHT5921-243 2000	14	YEL5921-241 2000
8	WHT5921-244 3000	14	GRN4500-241 5000

54201411: 9ZZZ
1437839-1: 9ZZZ



FC1 #54201411

<small>UNLESS OTHERWISE NOTED THIS DRAWING AND THE INFORMATION CONTAINED HEREIN ARE PROPRIETARY TO PACCAR, INC. IT SHALL NOT BE REPRODUCED, COPIED OR DISCLOSED IN WHOLE OR IN PART, OR USED FOR MANUFACTURE OR FOR OTHER PURPOSE WITHOUT THE WRITTEN PERMISSION OF PACCAR, INC.</small>	TITLE	HARNES - 2.1M AERO HOOD	
	DRAWING	L92-6032-0000	REV A
	SCALE	1:10	DRAWING VERSION A, 7

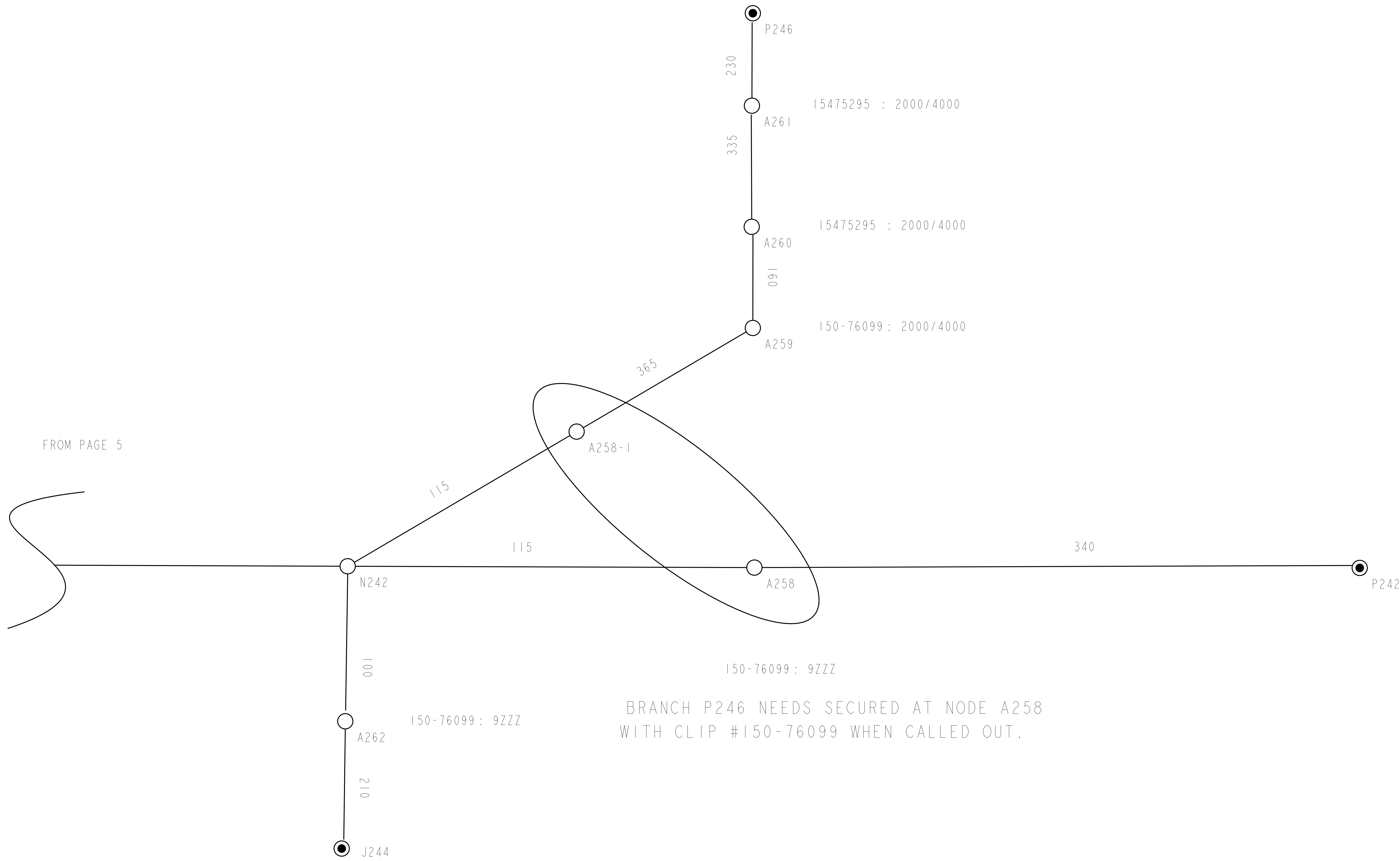


AMP #776427-1

P246
LH HOOD MIRROR

1	WHT5921-241	4000
1	WHT5921-243	2000
2	YEL5921-241	2000

776427-1 : 2000/4000

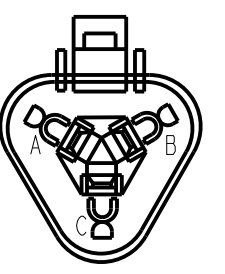


FROM PAGE 5

P242
LH SIDE TURN

A	YEL2412-242	9ZZZ
B	YEL2311-242	9ZZZ
C	WHT2412-241	9ZZZ

DT06-3S-P012 : 9ZZZ



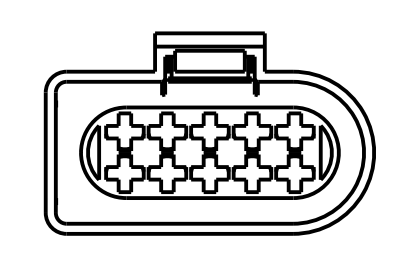
DEUTSCH #DT06-3S-P012
WEDGE LOCK #W3S-P012

BRANCH P246 NEEDS SECURED AT NODE A258
WITH CLIP #150-76099 WHEN CALLED OUT.

J244
LH HEADLAMP

1	YEL2121-241	9ZZZ
2	YEL2311-243	9ZZZ
3	YEL2412-244	9ZZZ
4	YEL2311-244	9ZZZ
5	YEL2412-246	9ZZZ
6	WHT2110-243	9ZZZ
7	YEL2111-241	9ZZZ
8	WHT2110-244	9ZZZ
9	YEL2313-241	9ZZZ
10	(828922-1)	

42121500 : 9ZZZ




CONN #42121500

<small>UNLESS OTHERWISE NOTED THIS DRAWING AND THE INFORMATION CONTAINED HEREIN ARE PROPRIETARY TO PACCAR, INC. IT SHALL NOT BE REPRODUCED, COPIED OR DISCLOSED IN WHOLE OR IN PART, OR USED FOR MANUFACTURE OR FOR OTHER PURPOSE WITHOUT THE WRITTEN PERMISSION OF PACCAR, INC.</small>	TITLE	HARNES - 2.1M AERO HOOD	
	SCALE	1:10	DRAWING VERSION A.7
			SHEET 6 OF 7 REV A DWG SIZE AO

VENDOR WIRE INFORMATION TABLE - REFERENCE ONLY

Wire	Option	Multicore	Internal Part	CSA	Type	Color	Material	Node	Pin 1	INT Term 1	INT Seal 1	Node 2	Pin 2	INT Term 2	INT Seal 2
WHT2100-241	9Z7Z		TXL-12-WHT	3.00	19/.45	WHT	TXL	P241	9	54001000	-	242			-
WHT2100-242	9Z7Z		TXL-12-WHT	3.00	19/.45	WHT	TXL	P241	10	54001000	-	242			-
WHT2110-243	9Z7Z		TXL-14-WHT	2.00	19/.36	WHT	TXL	242			-	J244	6	964273-1	963293-1
WHT2110-244	9Z7Z		TXL-14-WHT	2.00	19/.36	WHT	TXL	242			-	J244	8	964273-1	963293-1
WHT2110-247	9Z7Z		TXL-14-WHT	2.00	19/.36	WHT	TXL	242			-	J245	8	964273-1	963293-1
WHT2110-248	9Z7Z		TXL-14-WHT	2.00	19/.36	WHT	TXL	242			-	J245	6	964273-1	963293-1
WHT2412-241	9Z7Z		TXL-14-WHT	2.00	19/.36	WHT	TXL	242			-	P242	C	1062-16-0122	-
WHT2412-243	9Z7Z		TXL-14-WHT	2.00	19/.36	WHT	TXL	242			-	P243	C	1062-16-0122	-
WHT5921-241	4000		TXL-14-WHT	2.00	19/.36	WHT	TXL	241			-	P246	I	776492-2	-
WHT5921-242	4000		TXL-14-WHT	2.00	19/.36	WHT	TXL	241			-	P247	I	776492-2	-
WHT5921-243	2000		TXL-14-WHT	2.00	19/.36	WHT	TXL	P241	8	54001400	-	P246	I	776492-2	-
WHT5921-244	3000		TXL-14-WHT	2.00	19/.36	WHT	TXL	P241	8	54001400	-	P247	I	776492-2	-
WHT5921-245	4000		TXL-14-WHT	2.00	19/.36	WHT	TXL	P241	8	54001400	-	241			-
YEL2111-241	9Z7Z		TXL-14-YEL	2.00	19/.36	YEL	TXL	P241	1	54001400	-	J244	7	964273-1	963293-1
YEL2112-241	9Z7Z		TXL-14-YEL	2.00	19/.36	YEL	TXL	P241	2	54001400	-	J245	7	964273-1	963293-1
YEL2121-241	9Z7Z		TXL-14-YEL	2.00	19/.36	YEL	TXL	P241	3	54001400	-	J244	1	964273-1	963293-1
YEL2122-241	9Z7Z		TXL-14-YEL	2.00	19/.36	YEL	TXL	P241	4	54001400	-	J245	1	964273-1	963293-1
YEL2311-241	9Z7Z		TXL-14-YEL	2.00	19/.36	YEL	TXL	P241	5	54001400	-	246			-
YEL2311-242	9Z7Z		TXL-14-YEL	2.00	19/.36	YEL	TXL	246			-	P242	B	1062-16-0122	-
YEL2311-243	9Z7Z		TXL-14-YEL	2.00	19/.36	YEL	TXL	J244	2	964273-1	963293-1	246			-
YEL2311-244	9Z7Z		TXL-14-YEL	2.00	19/.36	YEL	TXL	J244	4	964273-1	963293-1	246			-
YEL2312-241	9Z7Z		TXL-14-YEL	2.00	19/.36	YEL	TXL	P241	6	54001400	-	247			-
YEL2312-242	9Z7Z		TXL-14-YEL	2.00	19/.36	YEL	TXL	247			-	P243	B	1062-16-0122	-
YEL2312-243	9Z7Z		TXL-14-YEL	2.00	19/.36	YEL	TXL	J245	4	964273-1	963293-1	247			-
YEL2312-244	9Z7Z		TXL-14-YEL	2.00	19/.36	YEL	TXL	J245	2	964273-1	963293-1	247			-
YEL2313-241	9Z7Z		TXL-14-YEL	2.00	19/.36	YEL	TXL	P241	11	54001400	-	J244	9	964273-1	963293-1
YEL2314-241	9Z7Z		TXL-14-YEL	2.00	19/.36	YEL	TXL	P241	12	54001400	-	J245	9	964273-1	963293-1
YEL2412-241	9Z7Z		TXL-14-YEL	2.00	19/.36	YEL	TXL	P241	7	54001400	-	243			-
YEL2412-242	9Z7Z		TXL-14-YEL	2.00	19/.36	YEL	TXL	243			-	P242	A	1062-16-0122	-
YEL2412-243	9Z7Z		TXL-14-YEL	2.00	19/.36	YEL	TXL	243			-	P243	A	1062-16-0122	-
YEL2412-244	9Z7Z		TXL-14-YEL	2.00	19/.36	YEL	TXL	243			-	J244	3	964273-1	963293-1
YEL2412-245	9Z7Z		TXL-14-YEL	2.00	19/.36	YEL	TXL	243			-	J245	3	964273-1	963293-1
YEL2412-246	9Z7Z		TXL-14-YEL	2.00	19/.36	YEL	TXL	243			-	J244	5	964273-1	963293-1
YEL2412-247	9Z7Z		TXL-14-YEL	2.00	19/.36	YEL	TXL	243			-	J245	5	964273-1	963293-1
YEL5921-241	2000		TXL-14-YEL	2.00	19/.36	YEL	TXL	P241	14	54001400	-	P246	2	776492-2	-
YEL5921-242	3000		TXL-14-YEL	2.00	19/.36	YEL	TXL	P241	13	54001400	-	P247	2	776492-2	-
BLU4900-241	5000		TXL-16-BLU	1.00		BLU	TXL	P241	13	54001400	-	P053	1	1062-20-0122	-
GRN4500-241	5000		TXL-16-GRN	1.00		GRN	TXL	P241	14	54001400	-	P053	2	1062-20-0122	-

<small>UNLESS OTHERWISE NOTED THIS DRAWING AND THE INFORMATION CONTAINED HEREIN ARE PROPRIETARY TO PACCAR INC. IT SHALL NOT BE REPRODUCED, COPIED OR DISCLOSED IN WHOLE OR IN PART, OR USED FOR MANUFACTURE OR FOR OTHER PURPOSE WITHOUT THE WRITTEN PERMISSION OF PACCAR INC.</small>	TITLE	REV
	HARNES - 2.1M AERO HOOD	A
	DRAWING	DWG SIZE
L92-6032-0000	A	A0
SCALE 1:10	DRAWING VERSION A, 7	SHEET 7 OF 7