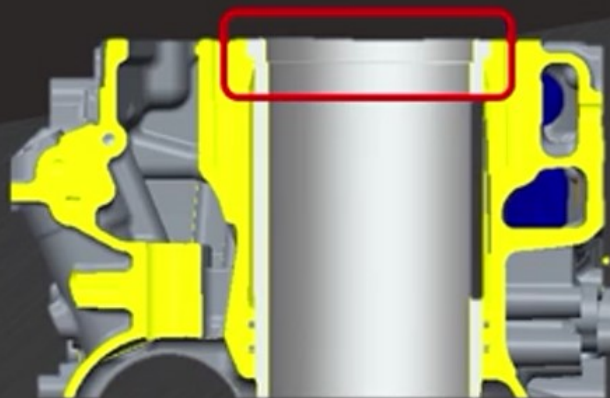


MX13 Block Top Fit Liner

PACCAR POWERTRAIN



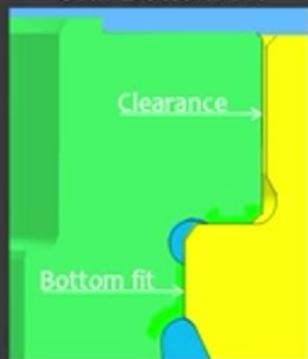
Subject matter:

The issue is fretting fatigue damage at the balconies. This problem is predominantly with NA17 HE500.

Improvement description:

Change liner fixation design from "bottom fit" to "top fit". This will reduce relative movement between the bloc (balcony) and liners (collar) at the contact interfaces. Simultaneously multiple minor machining changes in the block are implemented for backwards compatibility with MY2021 (see presentation).

Old: Bottom Fit



New: Top fit



Old/New PN Block: 2115212 / 2237717

Old/New PN Liner: 1856324 / 2143815