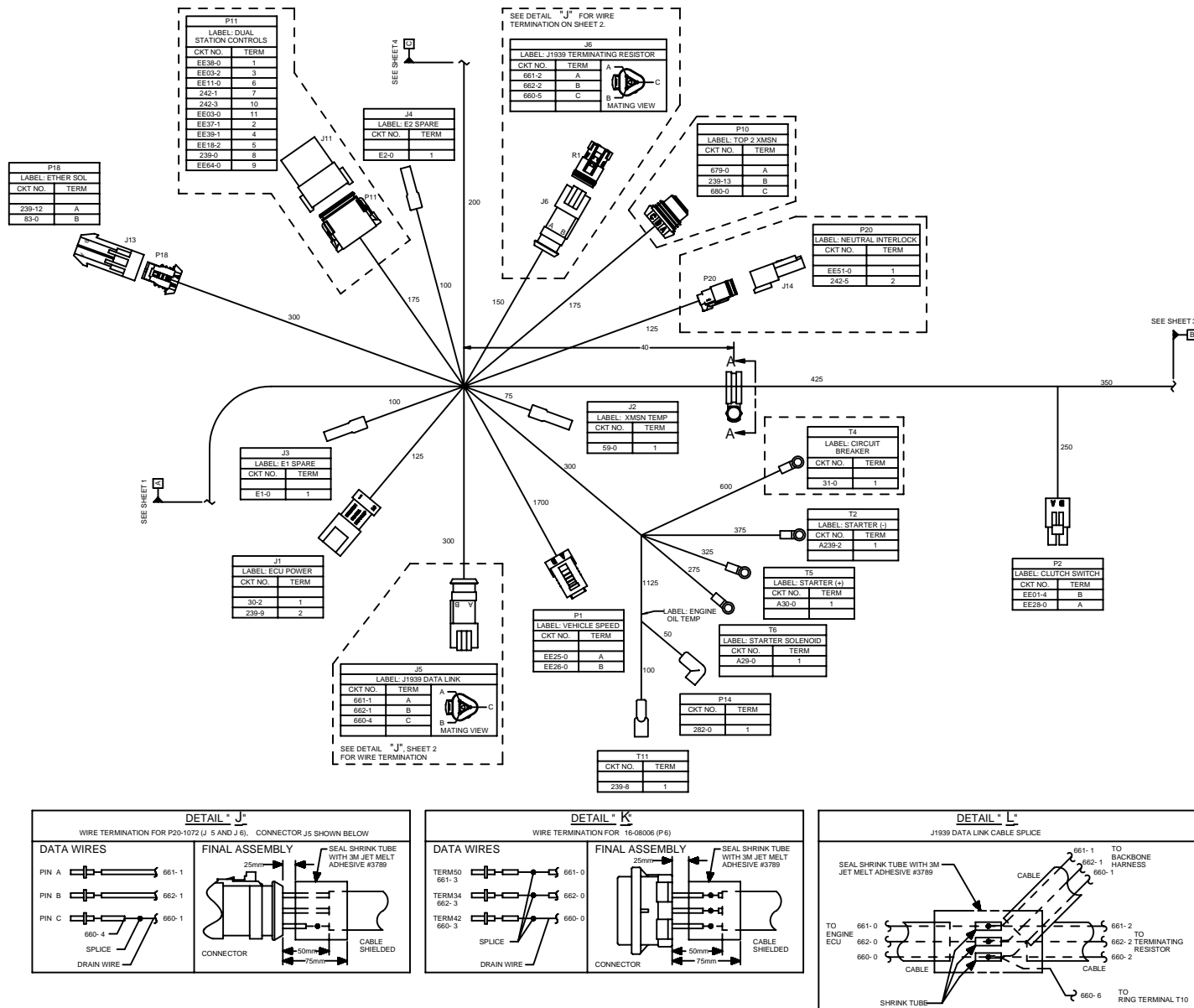
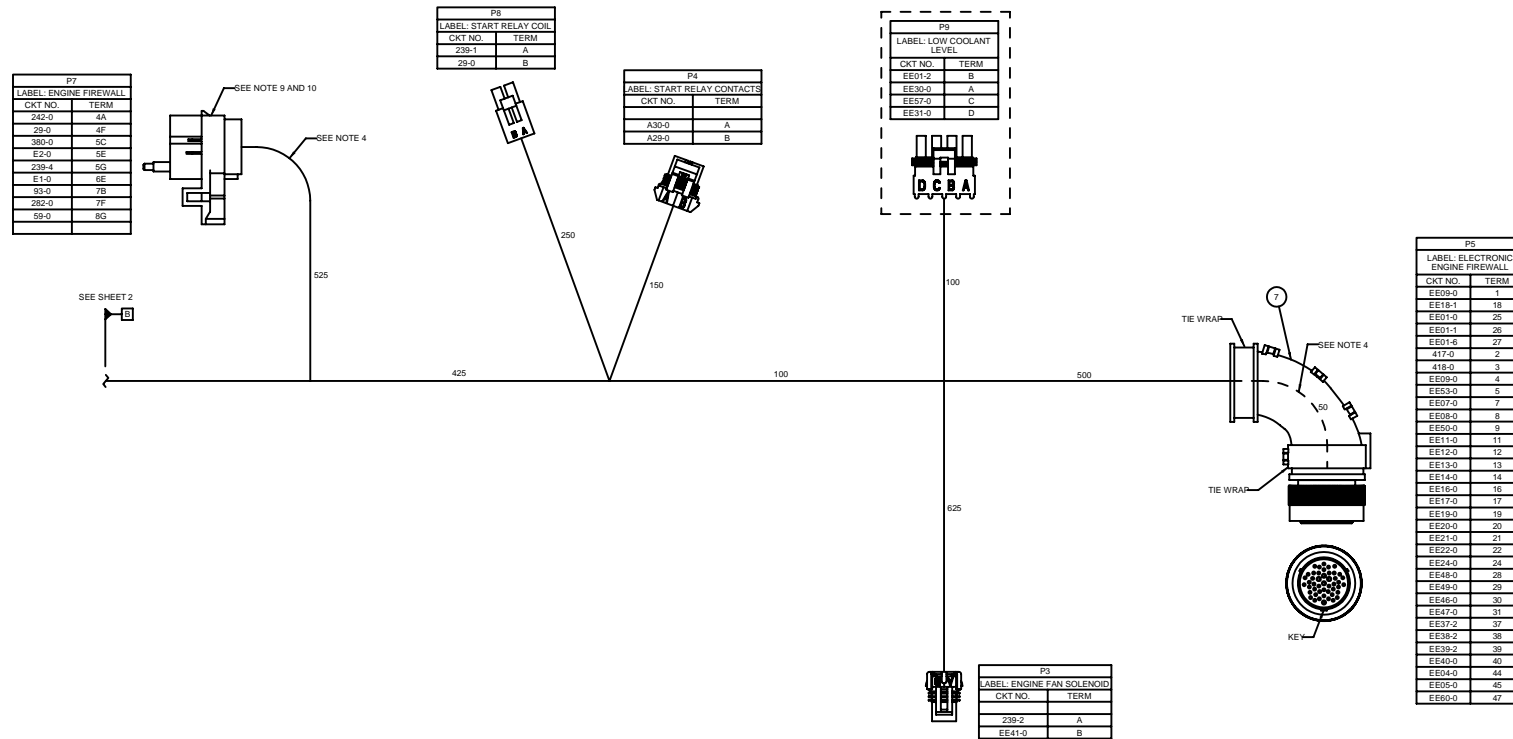
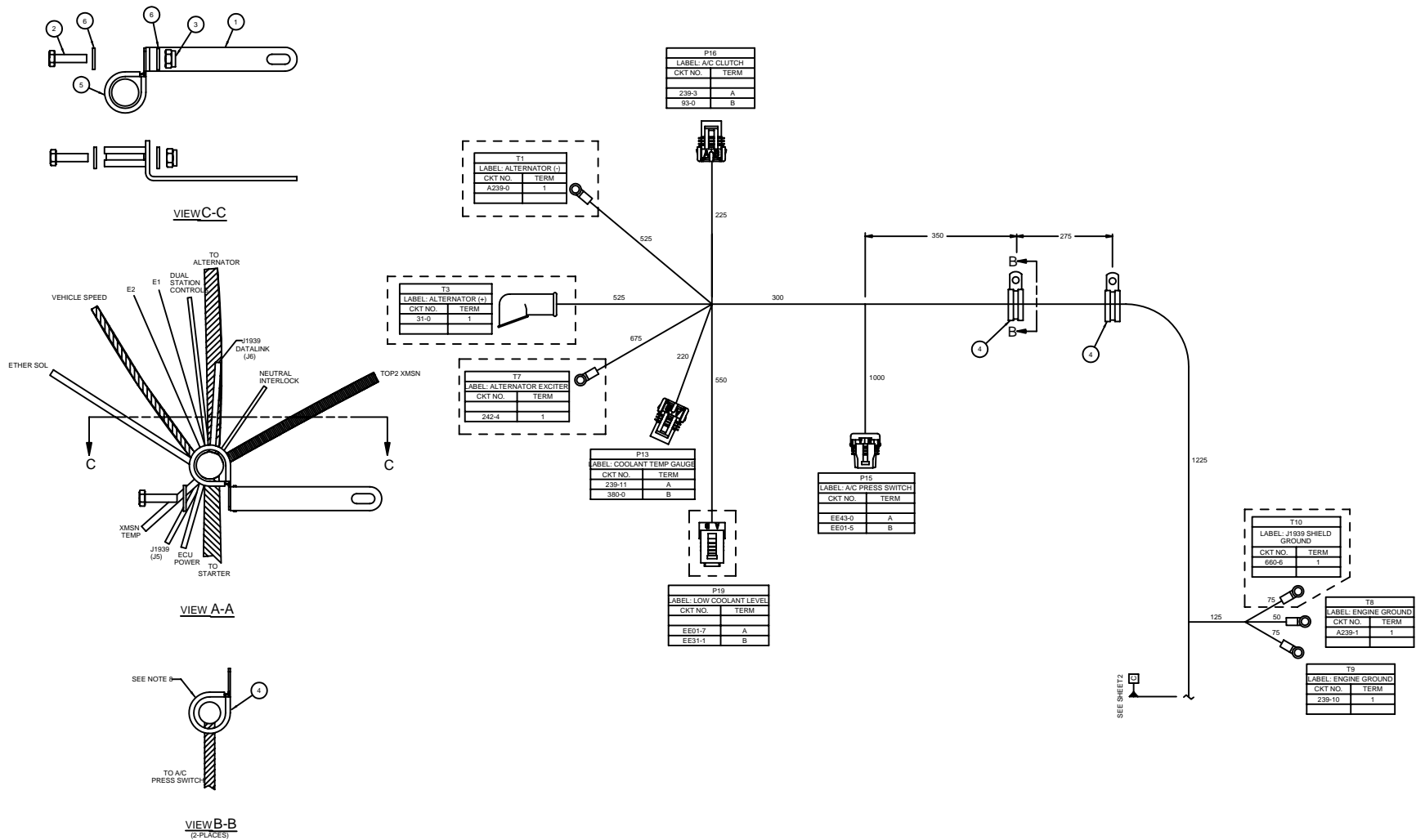


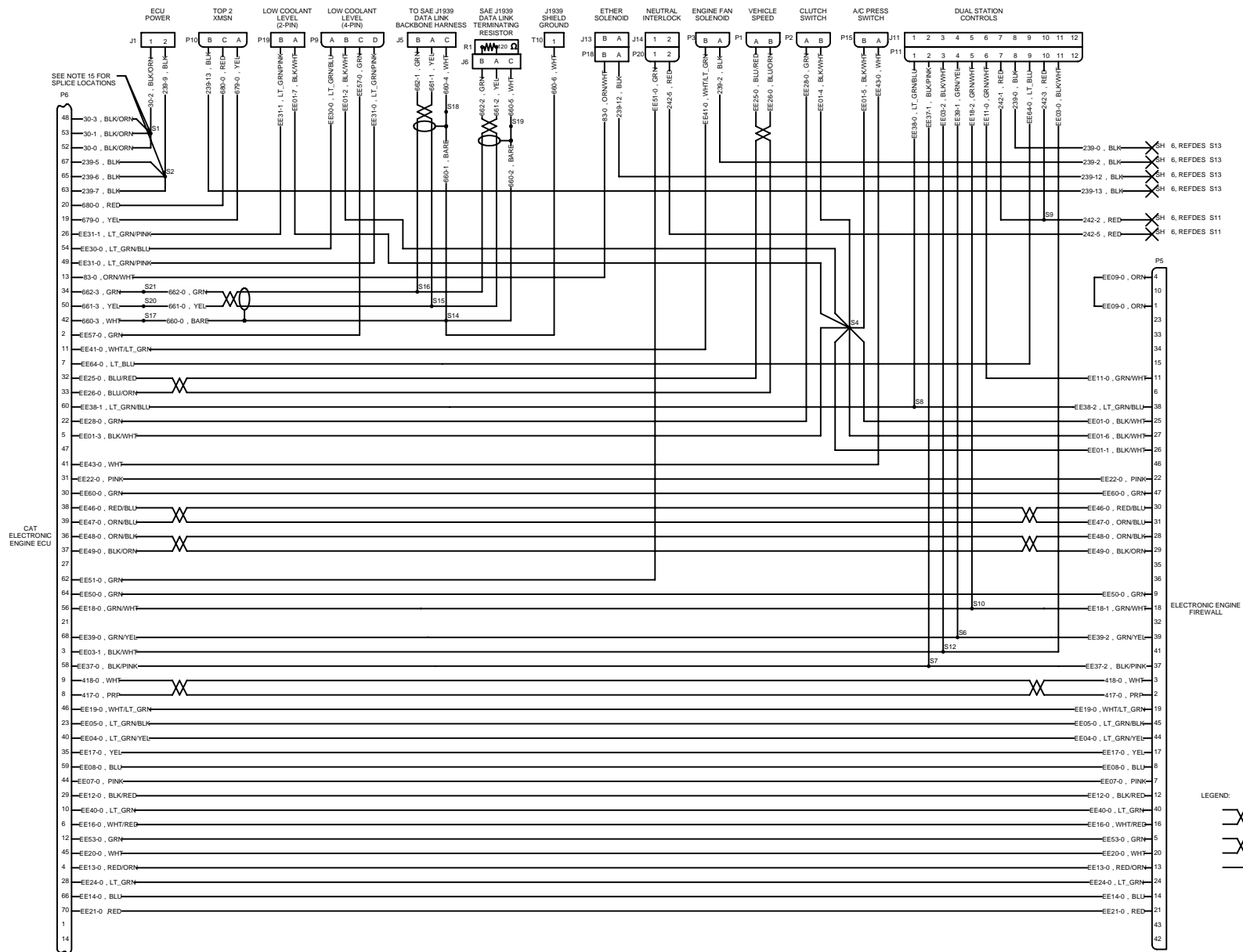


A DIVISION OF **PACCAR**









WIRE INFORMATION FOR HARNESS: P92-6087-00000									
QXT NO	WIRE GAUGE	INSUL	WIRE NUMBER	COLOR	FROM COMPONENT	TERM TO COMPONENT	TERM TO COMPONENT	DESCRIPTION	
30-0	14	GXL	16-0607	BLK/ORN	S1 SPLICE	52	S1 SPLICE	1	UNSWITCHED BATTERY
30-1	14	GXL	16-0607	BLK/ORN	P6 16-0608	53	S1 SPLICE	1	UNSWITCHED BATTERY
30-2	10	GXL	16-0704	BLK/ORN	S1 SPLICE	1	J1 P20-1159-102	1	UNSWITCHED BATTERY
30-3	14	GXL	16-0607	BLK/ORN	P6 16-0608	48	S1 SPLICE	1	UNSWITCHED BATTERY
30-4	16	GXL	16-0607	BLK/ORN	P7 16-0608	48	S1 SPLICE	1	UNSWITCHED BATTERY
380-0	18	GXL	16-0472	PRPVLT	P7 P20-129	58	P13 16-06461	B	WATER TEMP GAUGE
417-0	18	GXL	16-0472	PRP	P6 16-0606	8	P5 16-06689	2	J1557 DATA LINK (+)
418-0	18	GXL	16-0472	WHT	P6 16-0606	9	P5 16-06689	3	J1557 DATA LINK (-)
43-0	18	GXL	16-0620	WHT	P20-129	83	P4 16-06200	1	STARTER MOTOR
660-0	20	NONE	P92-1548	BARE	S18 SPLICE	1	S14 SPLICE	1	DATA LINK J1939 SHLD
660-1	20	NONE	P92-1549	BARE	S18 SPLICE	1	S14 SPLICE	1	DATA LINK J1939 SHLD
660-2	20	NONE	P92-1549	BARE	S19 SPLICE	1	S14 SPLICE	1	DATA LINK J1939 SHLD
660-3	16	GXL	16-0473	WHT	Z5 P20-102	1	S18 SPLICE	1	DATA LINK J1939 SHLD
660-4	16	GXL	16-0473	WHT	J6 P20-102	2	C SPLICE	1	DATA LINK J1939 SHLD
660-5	16	GXL	16-0473	WHT	J6 P20-102	3	S19 SPLICE	1	DATA LINK J1939 SHLD
660-6	16	GXL	16-0473	WHT	T10 RINGTERM	1	S14 SPLICE	1	DATA LINK J1939 SHLD
661-0	20	GXL	P92-1549	VEL	S20 SPLICE	1	S18 SPLICE	1	DATA LINK J1939 H
661-1	20	GXL	P92-1549	VEL	Z5 P20-102	2	S18 SPLICE	1	DATA LINK J1939 H
661-2	20	GXL	P92-1549	VEL	J6 P20-102	3	A S18 SPLICE	1	DATA LINK J1939 H
661-3	16	GXL	16-0473	YEL	P6 16-0606	50	S20 SPLICE	1	DATA LINK J1939 H
662-0	20	GXL	P92-1549	GRN	S21 SPLICE	1	S18 SPLICE	1	DATA LINK J1939 L
662-1	20	GXL	P92-1549	GRN	Z5 P20-102	5	S18 SPLICE	1	DATA LINK J1939 L
662-2	20	GXL	P92-1549	GRN	J6 P20-102	7	B S18 SPLICE	1	DATA LINK J1939 L
662-3	16	GXL	16-0473	GRN	P6 16-0606	34	S21 SPLICE	1	DATA LINK J1939 L
679-0	18	GXL	16-0472	VEL	P6 16-0606	19	P16 16-07834	A	TOP LOCKOUT
680-0	18	GXL	16-0472	RED	P6 16-0606	21	P16 16-07834	A	TOP LOCKOUT
83-0	18	GXL	16-0472	ORN/WHT	P6 16-0606	13	P18 P20-1040	B	ETHER SOLENOID
83-1	18	GXL	16-0472	LT GRN/WHT	P7 P20-129	78	P16 16-06461	B	ACE CLUTCH ON/OFF
A239-0	2	SGX	16-08316	BLK	T1 RINGTERM	1	S3 SPLICE	1	ALTERNATOR (+) TO SPLICE
A239-1	2	SGX	16-08316	BLK	T2 RINGTERM	1	S3 SPLICE	1	ALTERNATOR (-) TO SPLICE
A239-2	2	SGX	16-08316	BLK	T2 RINGTERM	1	S3 SPLICE	1	STARTER (-) TO SPLICE
A29-0	10	GXL	16-0704	PRP	T6 RINGTERM	1	P4 P20-1035	B	STARTER SOLENOID
A30-0	10	GXL	16-0704	BLK/ORN	T5 RINGTERM	1	P4 P20-1035	A	STARTER (+)
E00-0	18	GXL	16-0472	WHT	P20-129	56	P16 16-06200	1	ENGINE CRUISE #1
E2-0	14	GXL	16-09017	WHT	P7 P20-129	56	P16 16-06200	1	AUX ENG CRUISE #2
E01-0	18	GXL	16-0472	BLK/WHT	P5 16-0689	26	S4 SPLICE	1	SENSOR COMMON #1
E01-1	18	GXL	16-0472	BLK/WHT	P5 16-0689	26	S4 SPLICE	1	SENSOR COMMON #2
E01-2	18	GXL	16-0472	BLK/WHT	P5 16-0689	26	S4 SPLICE	1	SENSOR COMMON #3
E01-3	18	GXL	16-0472	BLK/WHT	P5 16-0689	26	S4 SPLICE	1	SENSOR COMMON #2
E01-4	18	GXL	16-0472	BLK/WHT	P2 16-0444	8	S4 SPLICE	1	SENSOR COMMON #3
E01-5	18	GXL	16-0472	BLK/WHT	S4 SPLICE	1	P15 16-06940	A	SENSOR COMMON #3
E01-6	18	GXL	16-0472	BLK/WHT	P5 16-0689	27	S4 SPLICE	1	SENSOR COMMON #3
E01-7	18	GXL	16-0472	BLK/WHT	P5 16-0689	27	S4 SPLICE	1	SENSOR COMMON #3
E03-0	18	GXL	16-0472	BLK/WHT	P11 16-06777	11	S12 SPLICE	1	SENSOR COMMON #3
E03-1	18	GXL	16-0472	BLK/WHT	P5 16-0606	3	S12 SPLICE	1	SENSOR COMMON #3
E03-2	18	GXL	16-0472	BLK/WHT	P11 16-06777	2	S12 SPLICE	1	SENSOR COMMON #3
E03-3	18	GXL	16-0472	BLK/WHT	P5 16-0606	23	S12 SPLICE	1	SENSOR COMMON #3
E05-0	18	GXL	16-0472	LT GRN/BLK	P6 16-0606	23	P5 16-06689	45	ENGINE BK MED/HIGH
E05-0	18	GXL	16-0472	BLK	P6 16-0606	44	P5 16-06689	7	CRUISE AND PTO RESUME
E05-0	18	GXL	16-0472	PINK	P6 16-0606	45	P5 16-06689	8	CRUISE AND PTO ON/OFF
E05-0	18	GXL	16-0472	GRN	P6 16-0606	46	P5 16-06689	9	CRUISE AND PTO OFF
E11-0	18	GXL	16-0472	GRN/WHT	P11 16-06777	6	P5 16-06689	11	FAST LOLE-TORQUE LIMIT-START AIR
E12-0	18	GXL	16-0472	BLK/WHT	P6 16-0606	29	P5 16-06689	12	LOW OIL PRESSURE LAMP
E13-0	18	GXL	16-0472	RED/ORN	P6 16-0606	4	P5 16-06689	13	Idle Shutdown
E14-0	18	GXL	16-0472	GRN	P6 16-0606	5	P5 16-06689	14	Idle Shutdown
E15-0	16	GXL	16-0472	WHT/RED	P5 16-0606	6	P5 16-06689	15	Idle Shutdown
E17-0	18	GXL	16-0472	VEL	P6 16-0606	35	P5 16-06689	17	CRUISE AND PTO SET
E18-0	18	GXL	16-0472	GRN/WHT	P6 16-0606	56	S10 SPLICE	1	PTO ON/OFF
E19-1	18	GXL	16-0472	GRN/WHT	P5 16-0689	18	S10 SPLICE	1	PTO ON/OFF
E18-2	18	GXL	16-0472	GRN/WHT	S10 SPLICE	1	P11 16-06777	5	PTO ON/OFF
E19-0	18	GXL	16-0472	WHT/LT GRN	P6 16-0606	46	P5 16-06689	19	ENGINE FAN MANUAL OVERRIDE
E22-0	18	GXL	16-0472	WHT	P6 16-0606	45	P5 16-06689	20	SPICE BRAKE #1
E20-0	18	GXL	16-0472	RED	P6 16-0606	70	P5 16-06689	21	IGNITION KEY SWITCH
E23-0	18	GXL	16-0472	PINK	P6 16-0606	71	P5 16-06689	22	HIGH TEMP LAMP TEMP
E24-0	18	GXL	16-0472	LT GRN	P6 16-0606	28	P5 16-06689	24	CHARGE ENGINE
E25-0	18	GXL	16-0472	BLURRED	S2 SPLICE	32	P1 P20-1082	A	VEHICLE SPEED (+)
E26-0	18	GXL	16-0472	BLURRED	P6 16-0606	33	P1 P20-1082	A	VEHICLE SPEED (-)
E28-0	18	GXL	16-0472	BLURRED	P6 16-0606	24	P1 16-04454	A	CLUTCH SWITCHED (+)
E30-0	18	GXL	16-0472	LT GRN/BLU	P6 16-0606	54	P9 16-04244	A	LOW COOLANT LEVEL
E31-0	18	GXL	16-0472	LT GRN/PINK	P6 16-0606	49	P9 16-04244	D	NORMAL COOLANT LEVEL
E31-1	18	GXL	16-0472	LT GRN/PINK	P6 16-0606	28	P19 P20-1082	B	NORMAL COOLANT LEVEL
E31-2	18	GXL	16-0472	BLK/ORN	P6 16-0606	18	P19 P20-1082	B	NORMAL COOLANT LEVEL
E37-1	18	GXL	16-0472	BLK/PINK	S7 SPLICE	1	P11 16-06777	2	REMOTE PTO "SET"
E37-2	18	GXL	16-0472	BLK/PINK	S7 SPLICE	1	P5 16-06689	37	REMOTE PTO "SET"
E38-0	18	GXL	16-0472	LT GRN/BLU	P11 16-06777	1	S9 SPLICE	1	REMOTE PTO "RESUME"
E38-1	18	GXL	16-0472	LT GRN/BLU	P5 16-0606	18	S9 SPLICE	1	REMOTE PTO "RESUME"
E38-2	18	GXL	16-0472	LT GRN/BLU	S9 SPLICE	1	P5 16-06689	38	REMOTE PTO "RESUME"
E39-0	18	GXL	16-0472	GRN/VEL	S6 SPLICE	1	S6 SPLICE	1	REMOTE THROTTLE
E39-1	18	GXL	16-0472	GRN/VEL	S6 SPLICE	1	P11 16-06777	4	REMOTE THROTTLE
E40-0	18	GXL	16-0472	GRN/VEL	S6 SPLICE	1	P5 16-06689	39	REMOTE THROTTLE
E40-0	18	GXL	16-0472	LT GRN	P6 16-0606	10	P5 16-06689	40	ENGINE SHUTDOWN OUTPUT
E41-0	18	GXL	16-0472	WHT/LT GRN	P6 16-0606	11	P5 16-06461	B	ENGINE FAN SOLENOID
E43-0	18	GXL	16-0472	WHT	P6 16-0606	41	P15 16-06940	A	ACE PRESSURE
E43-0	18	GXL	16-0472	RED/BLU	P6 16-0606	42	P15 16-06940	A	ANCHORER OUTPUT (+)
E47-0	18	GXL	16-0472	ORN/BLU	P6 16-0606	39	P5 16-06689	31	TACHMETER OUTPUT (+)
E48-0	18	GXL	16-0472	ORN/BLK	P6 16-0606	38	P5 16-06689	28	SPEEDOMETER OUTPUT (+)
E49-0	18	GXL	16-0472	BLK/ORN	P6 16-0606	37	P5 16-06689	29	SPEEDOMETER OUTPUT (+)
E50-0	18	GXL	16-0472	GRN	P6 16-0606	64	P5 16-06689	32	ENGINE BK 4Z FOR AUTO XMSN
E51-0	18	GXL	16-0472	GRN	P6 16-0606	12	P1 16-06178	A	XMSN TACHMETER OUTPUT
E52-0	18	GXL	16-0472	GRN	P6 16-0606	12	P5 16-06689	5	BRAKES/AVR RELAY
E57-0	18	GXL	16-0473	GRN	P6 16-0606	2	P16 16-04244	C	Idle Shutdown
E58-0	18	GXL	16-0472	GRN	P6 16-0606	30	P16 16-04244	C	Idle Shutdown
E59-0	18	GXL	16-0472	LT GRN	P6 16-0606	1	P11 16-06777	9	FAST LOLE-TORQUE LIMIT-START AIR

