

L

K

J

I

H

G

F

E

D

C

B

A

16

15

14

13

12

11

10

9

8

7

6

5

4

3

2

1

NOTES:

1) ASSEMBLE PER PETERBILT MPS 1600.002.

2) PLUG ALL UNUSED CAVITIES OF WEATHER PROOF CONNECTORS USING 16-07833 AS REQUIRED. SEAL ALL USED CAVITIES OF WEATHER PROOF CONNECTORS USING 16-07833 AS REQUIRED.

3) PART NUMBER IS GENERATED BY THE FOLLOWING:

P92-8451-ABCDEEEE

SEE TABLE A

SEE TABLE B


SEE TABLE C

SEE TABLE D

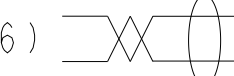
SEE "L" (VARIATION LENGTH)

EXAMPLE PN P92-8451-10108000 IS FOR IS FOR A BASE HARNESS, WITHOUT AXLE TEMP SENSORS, WITH TRAILER CONNECTIONS AND WITHOUT SIDE MARKER LAMPS.

OMIT CIRCUITS OR ITEM NUMBERS PER OPTIONS AS INDICATED. ALL OTHER CIRCUITS ARE STANDARD AND PART OF EVERY HARNESS.

4)  DENOTES MATED CONNECTION.

5) PROTECT CONNECTOR P243 WITH APPROXIMATELY 4 1/2" x 3" x 1 3/4" x 3/8" THICK FOAM CAP INSIDE AN APPROX. SIZED 2 MIL THICK PLASTIC BAG. TAPE OR TIE STRAP BAG IN PLACE. ALSO, BAG P259, J1 AND J521 IN SEPERATE BAGS.

6)  DENOTES A JACKETED TWISTED PAIR OF WIRES.

7) SHIP WITH 2 MIL THICK OR GREATER BAG OVER CONNECTOR.

8) FOR AMPERAGE LIMITATIONS - SEE CHASSIS NODE SPECIFICATION.

9) EMISSION-RELATED PART CODE: W, SEE PACCAR CPS0374 FOR REQUIREMENTS.

10) P92-8451-00000000 SUPERSEDES 23-16661-000000 AND 23-16661-000000.

11) SUPPLIER MAY ADD A TIE STRAP AROUND THE DRESSING COVER ON J621, J622 AND J623 TO SECURE THE COVER TO THE CONNECTOR AND HARNESS BUNDLE.THE TIE STRAP MUST NOT INTERFERE WITH THE LOCKING LEVER ACTION.

PROD

X

SVCE

J776

P20-1082

CONNECTOR_2-WAY

I

P2

16-06903-004

BLACK.DEUTSCH.DTHD

I

P20

16-04462

BLACK_PACKARD.WEATHER_PACK

I

P21

16-04462

BLACK_PACKARD.WEATHER_PACK

I

P243

P20-6223

CONNECTOR_DELPHI_30-WAY_FEMALE

I

P244

P20-1038

PLUG.DEUTSCH.8-PIN

I

P259

16-06778

DEUTSCH_12_PIN_DT.CONNECTOR

I

P521

16-06461

CONNECTOR- 2-WAY, METRI-PACK

I

P522

16-04463

CONN_TOWER_1-WAY_WEATHER_PACK

I

P523

16-04464

PACKARD.WEATHER_PACK

I

P524

P20-1165

PACKARD_GT_150-SERIES

I

P525

P20-1165

PACKARD_GT_150-SERIES

I

P526

16-04463

CONN_TOWER_1-WAY_WEATHER_PACK

I

P527

16-04464

PACKARD.WEATHER_PACK

I

P528

16-04463

CONN_TOWER_1-WAY_WEATHER_PACK

I

P529

16-06461

METRI -PACK_2-WAY

I

P530

16-04463

CONN_TOWER_1-WAY_WEATHER_PACK

I

P531

P20-1165

PACKARD_GT_150-SERIES

I

P532

16-04463

CONN_TOWER_1-WAY_WEATHER_PACK

I

P533

16-06414

2-WAY_METRI-RPACK_CONNECTOR

I

P534

16-07835

METRI -PACK_150_3-WAY

I

P537

16-06101

PACKARD.METRI -PACK_280-SEALED

I

P538

16-05514

3-WAY DT PLUG

I

P539

16-05514

3-WAY DT PLUG

I

P627

P20-1196-1203

CONNECTOR_PACKARD_GT_150, SEALED

I

P628

16-04464

BLACK_PACKARD.WEATHER_PACK

I

P629

16-04464

BLACK_PACKARD.WEATHER_PACK

I

P632

16-08338

CONNECTOR_1-WAY

I

P772

P20-1165

METRI -PACK_2-WAY_CONNECTOR

I

P774

P20-1165

METRI -PACK_2-WAY_CONNECTOR

I

P775

P20-1165

METRI -PACK_2-WAY_CONNECTOR

I

P776

P20-1165

METRI -PACK_2-WAY_CONNECTOR

I

J1

P20-1134-16-3-0

CONNECTOR.DEUTSCH.HDP20.RECEPTACLE

I

J20

16-04463

CONN_TOWER_1-WAY_WEATHER_PACK

I

J21

16-04463

CONN_TOWER_1-WAY_WEATHER_PACK

I

J245

P20-1039

CONNECTOR_8-WAY_DEUTSCH

I

J521

16-06568

METRI-PACK_280

I

J522

16-04462

PACKARD.WEATHER_PACK

I

J523

16-04465

PACKARD.WEATHER-PACK

I

J524

P20-1082

METRI-PACK_2-WAY_CONNECTOR

I

J525

P20-1082

METRI-PACK_2-WAY_CONNECTOR

I

J526

16-04462

PACKARD.WEATHER_PACK

I

J527

16-04465

PACKARD.WEATHER-PACK

I

J528

16-04462

PACKARD.WEATHER_PACK

I

J529

16-06568

METRI-PACK_280

I

J530

16-04462

PACKARD.WEATHER_PACK

I

J531

P20-1082

METRI-PACK_2-WAY_CONNECTOR

I

J532

16-04462

PACKARD.WEATHER_PACK

I

J533

16-06417

CONNECTOR_PLUG_2-WAY

I

J534

16-07834

CONNECTOR_3-WAY

I

J537

16-06106

PACKARD.METRI-PACK_280-SEALED

I

J538

16-05515

3-WAY DT RECP

I

J539

16-05515

3-WAY DT RECP

I

J621

P20-1274-001

CONNECTOR_AMP-MCP-SEALED

I

J622

P20-1274-002

CONNECTOR_AMP-MCP-SEALED

I

J623

P20-1274-003

CONNECTOR_AMP-MCP-SEALED

I

J627

P67-1008-1103

CONNECTOR_PACKARD_GT_150

I

J628

16-04465

BLACK_PACKARD.WEATHER_PACK

I

J629

16-04465

BLACK_PACKARD.WEATHER-PACK

I

J631

P20-1134-09-3-4

CONNECTOR.DEUTSCH.HDP20.RECEPTACLE

I

J632

16-08339

CONNECTOR_1-WAY

I

J772

P20-1082

CONNECTOR_2-WAY

I

J774

P20-1082

METRI-PACK_2-WAY_CONNECTOR

I

J775

P20-1082

CONNECTOR_2-WAY

I

ITEM

MATERIAL LIST

QTY

MATERIAL

1. THIS DRAWING AND THE INFORMATION CONTAINED HEREIN ARE PROPRIETARY TO PACCAR INC. UNLESS OTHERWISE NOTED AND SHALL NOT BE REPRODUCED, COPIED OR DISCLOSED IN WHOLE OR IN PART, OR USED FOR MANUFACTURE OR FOR OTHER PURPOSES WITHOUT THE WRITTEN PERMISSION OF PACCAR INC.

2. DIMENSIONING AND TOLERANCING PER PACCAR CS0108.

3. SHOW ALL DIMS. BREAK SHARP EDGES.

4. PART IDENTIFICATION AND TRACEABILITY REQUIREMENTS TO COMPLY WITH PACCAR CS0108.

5. THIS DRAWING SPECIFICATION USES SYMBOLS TO CLASSIFY CHARACTERISTICS. THESE SYMBOLS ARE DEFINED IN THE PACCAR SUPPLIER QUALITY STANDARD.

6. EMISSION-RELATED PART CODE: W, SEE PACCAR CPS0374 FOR REQUIREMENTS.

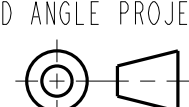
TOLERANCES UNLESS OTHERWISE SPECIFIED

ANGLE : $\pm 1^{\circ}$


(X, Y) : ± 1

(X, X1) : ± 0.5

THIRD ANGLE PROJECTION



DO NOT SCALE DRAWING



DIMENSION UNITS: MILLIMETERS

DRAWING

P92-8451-00000000

REV

C

SCALE

NONE

DRAWING VERSION

C.10

SHEET

1

OF

12

TITLE

HARNESS - CHASSIS NODE

16

15

14

13

12

11

10

9

8

7

6

5

4

3

2

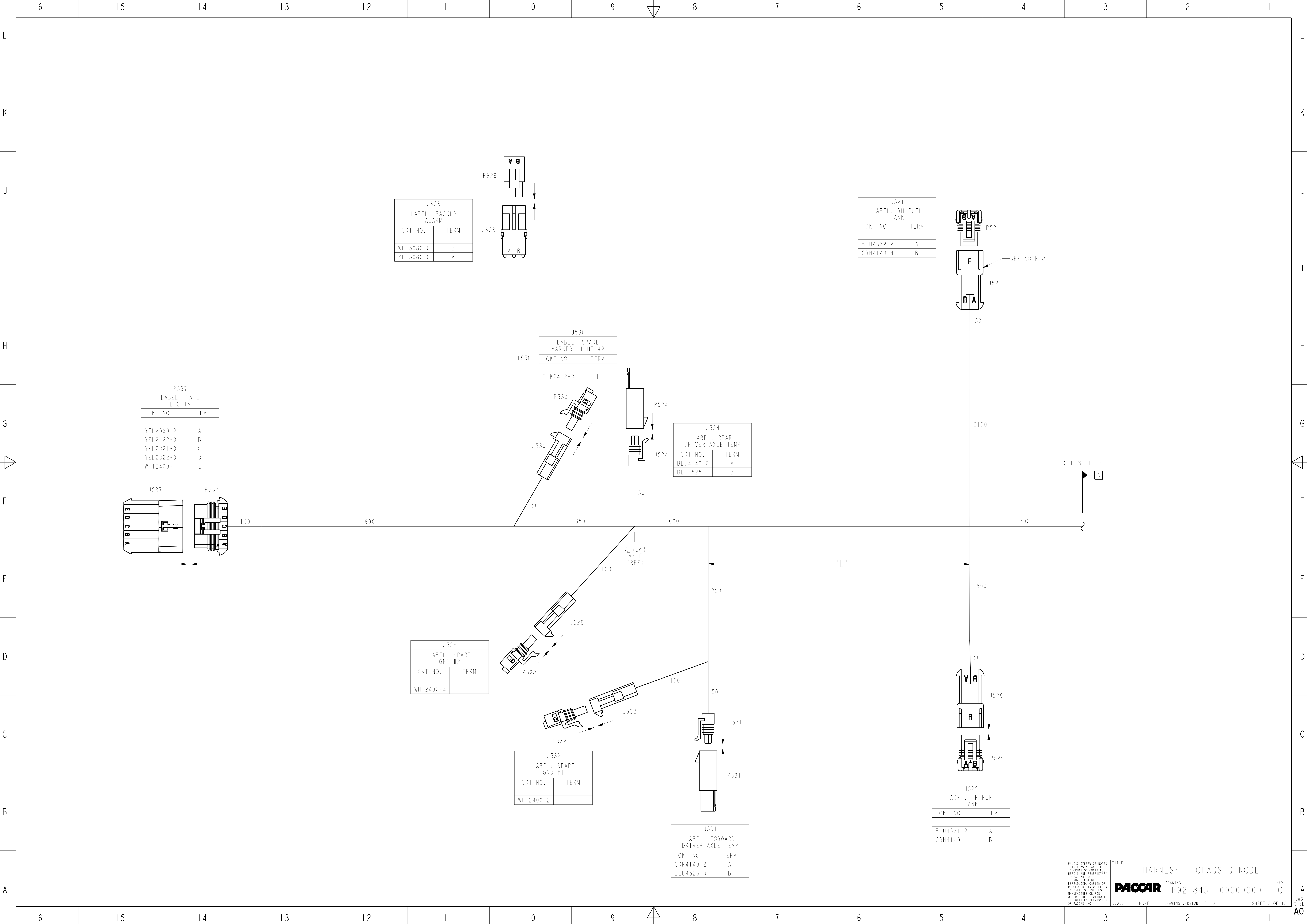
1

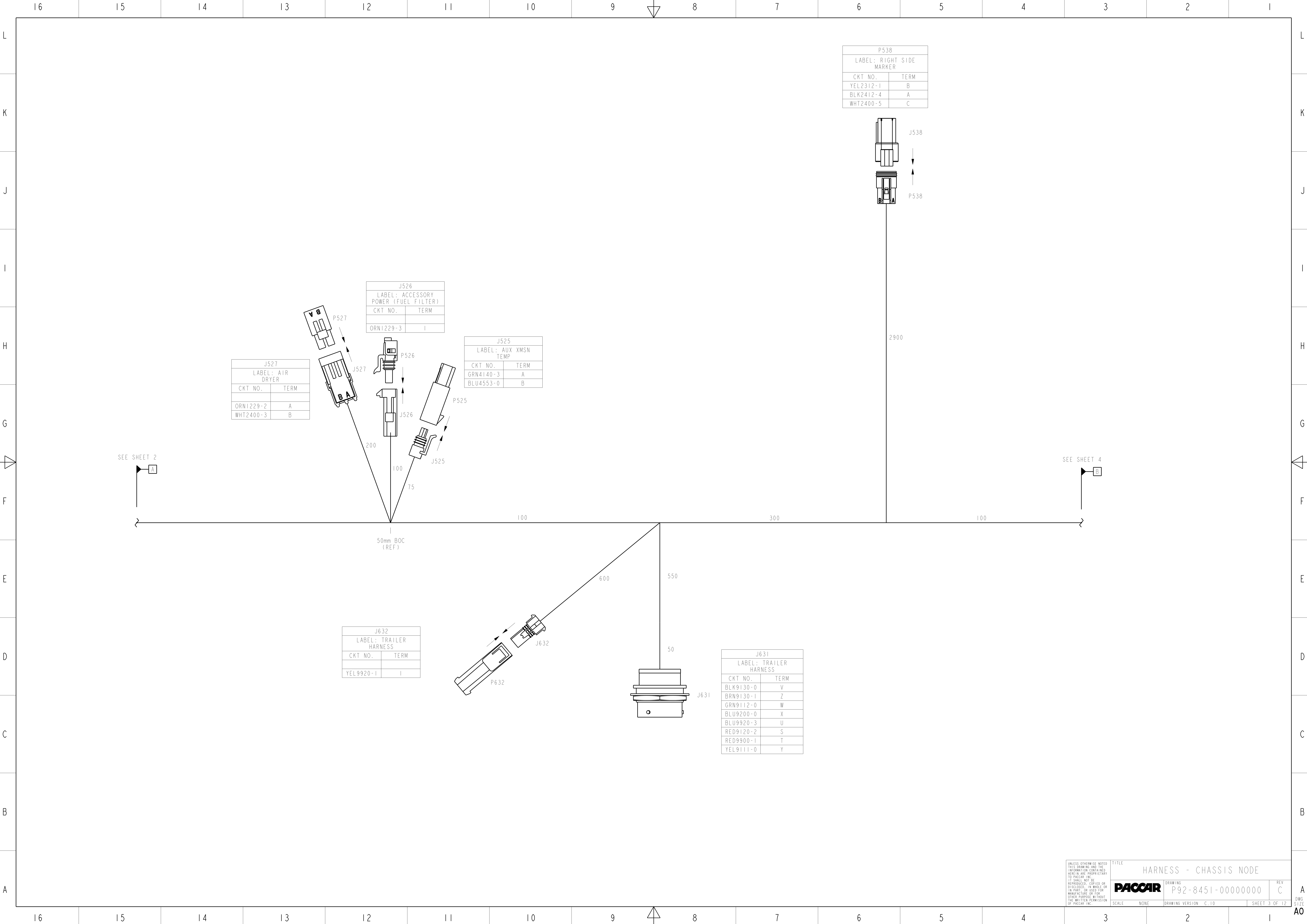
A

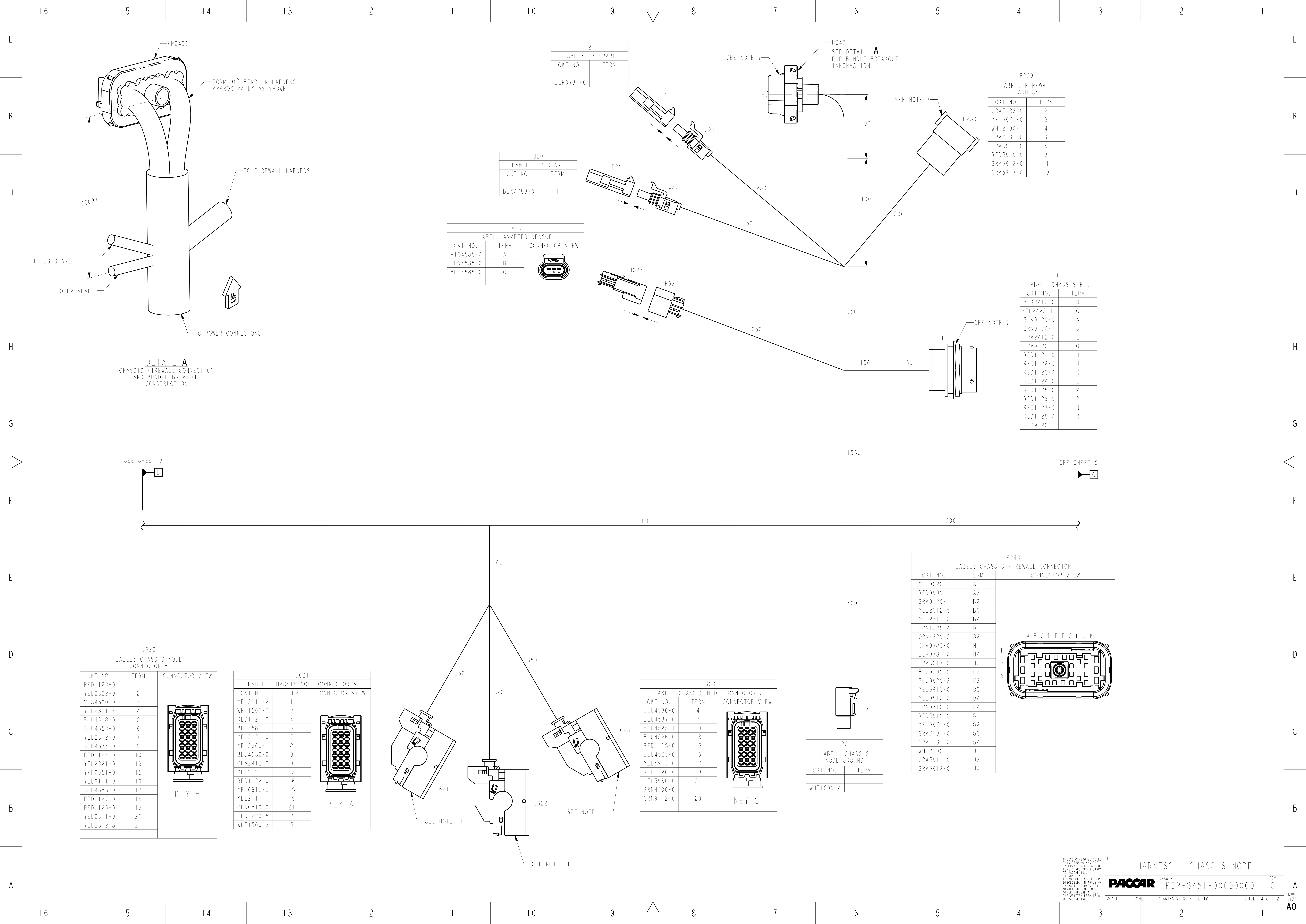
DWG

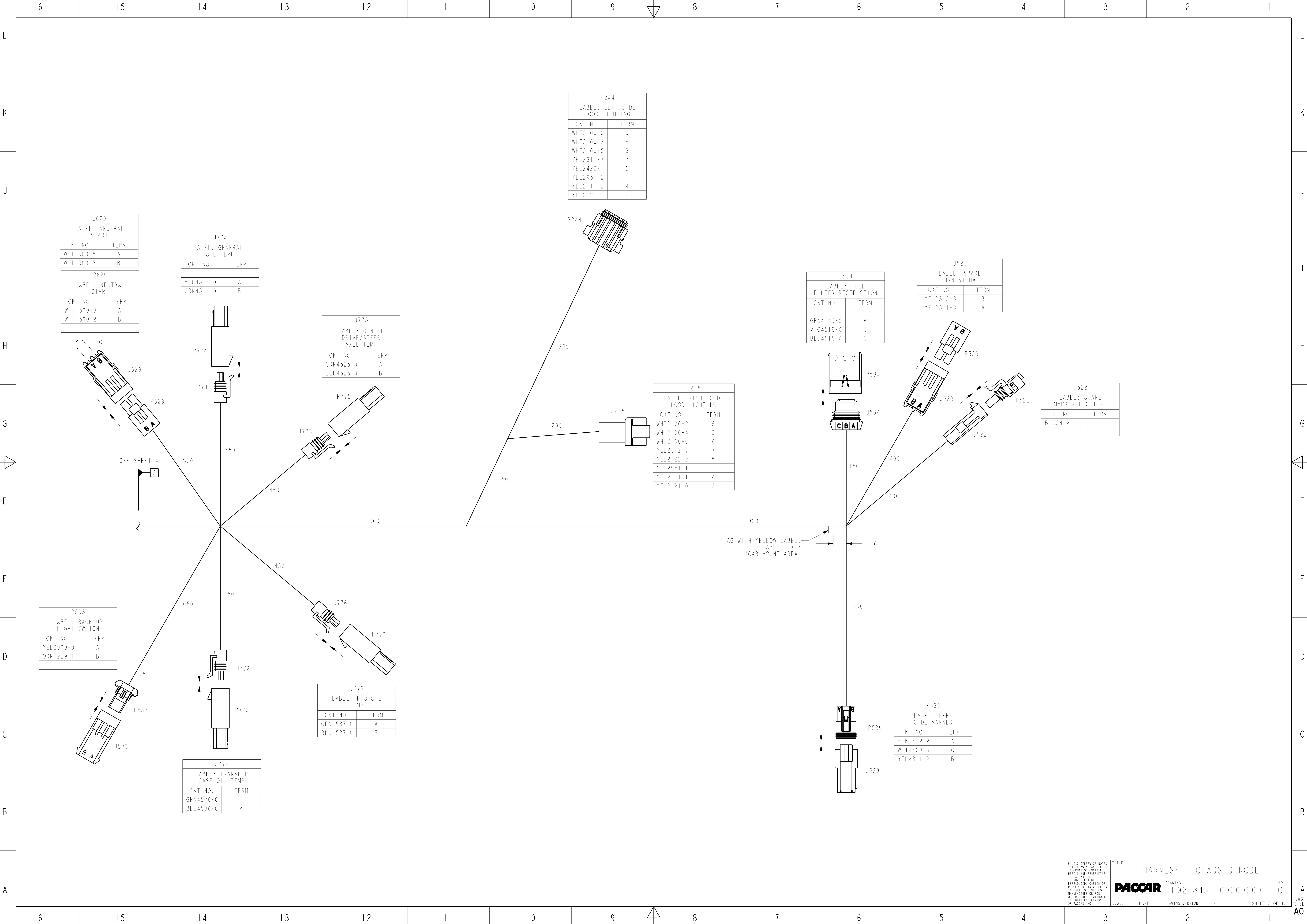
SIZE

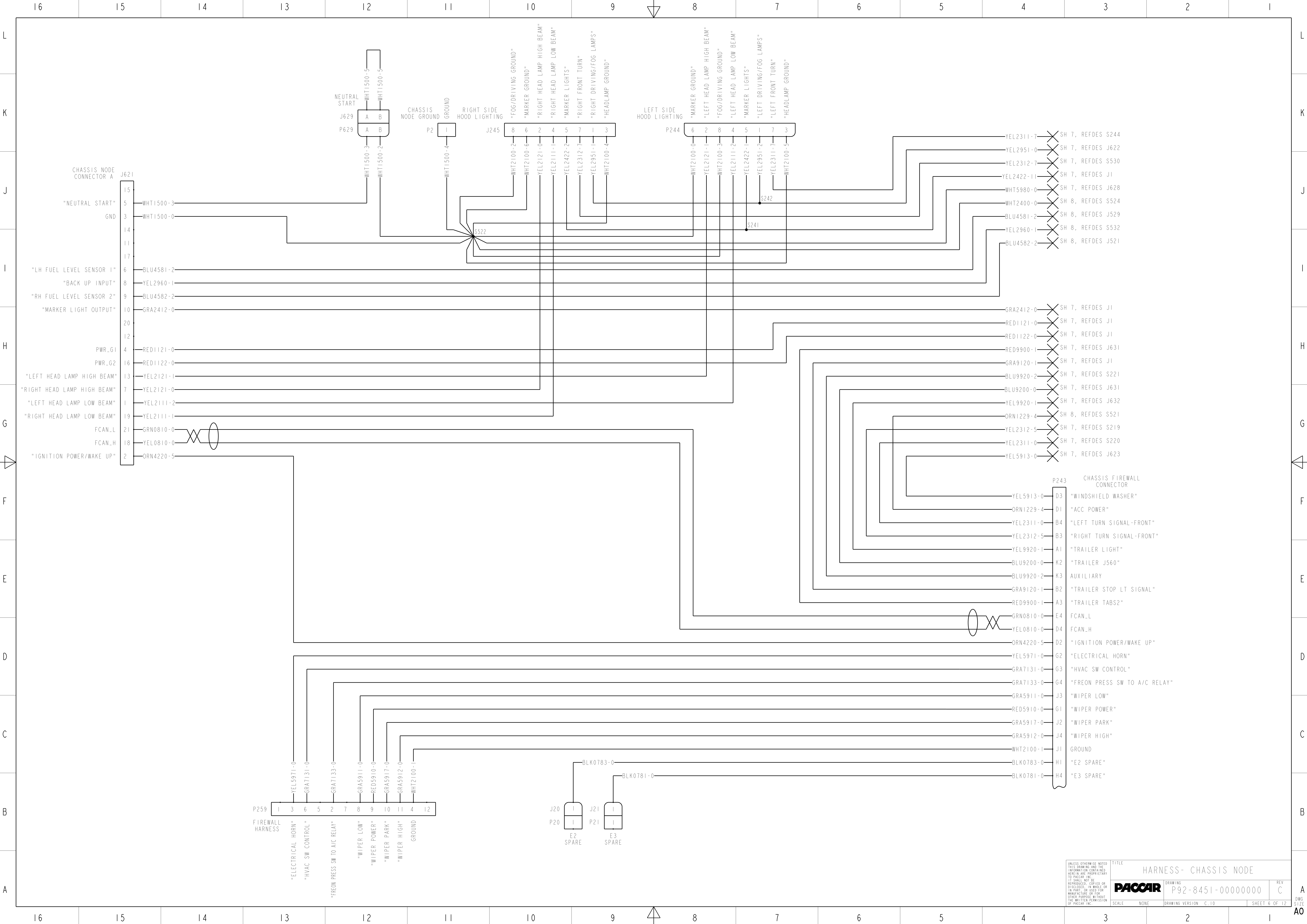
AO

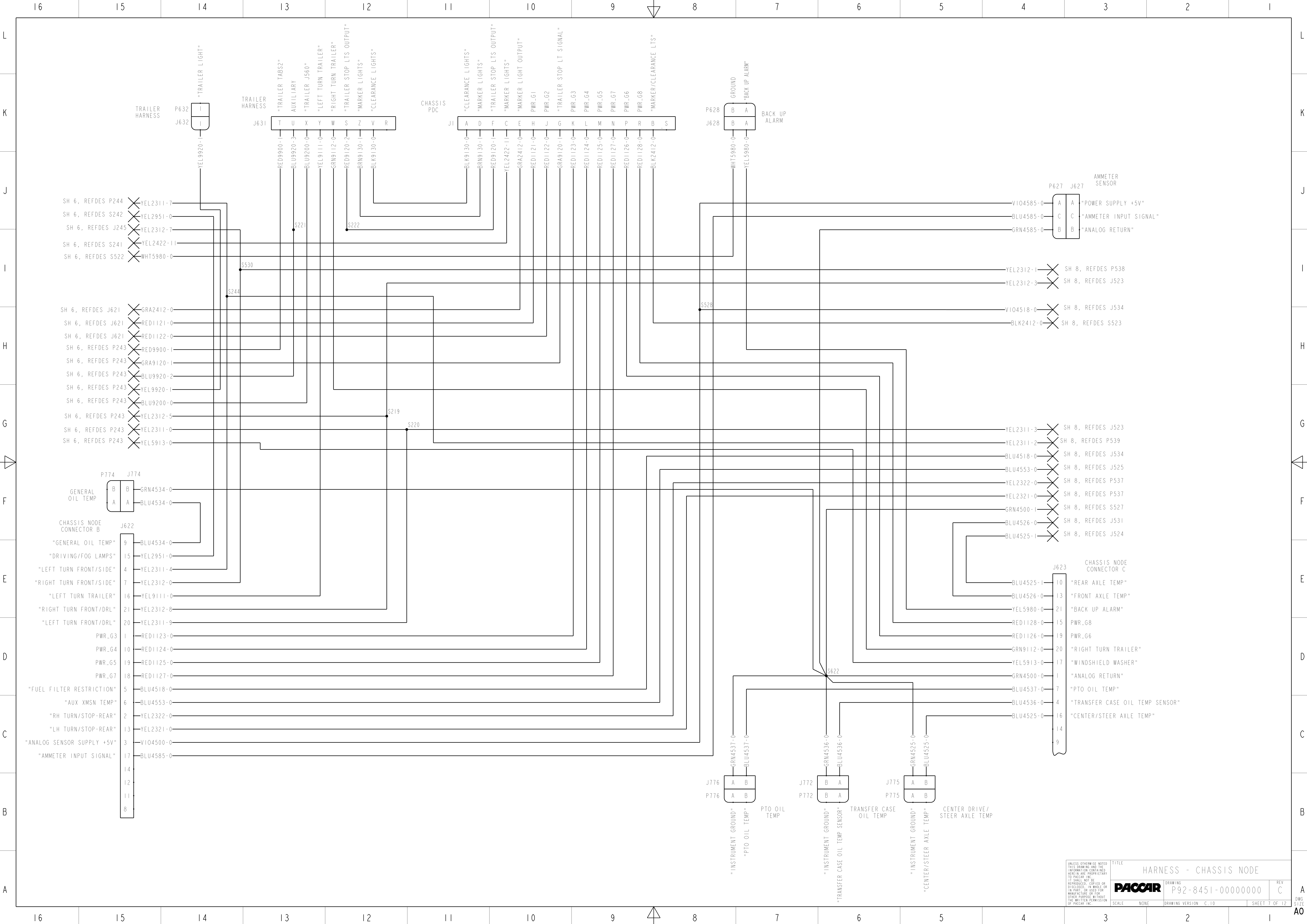


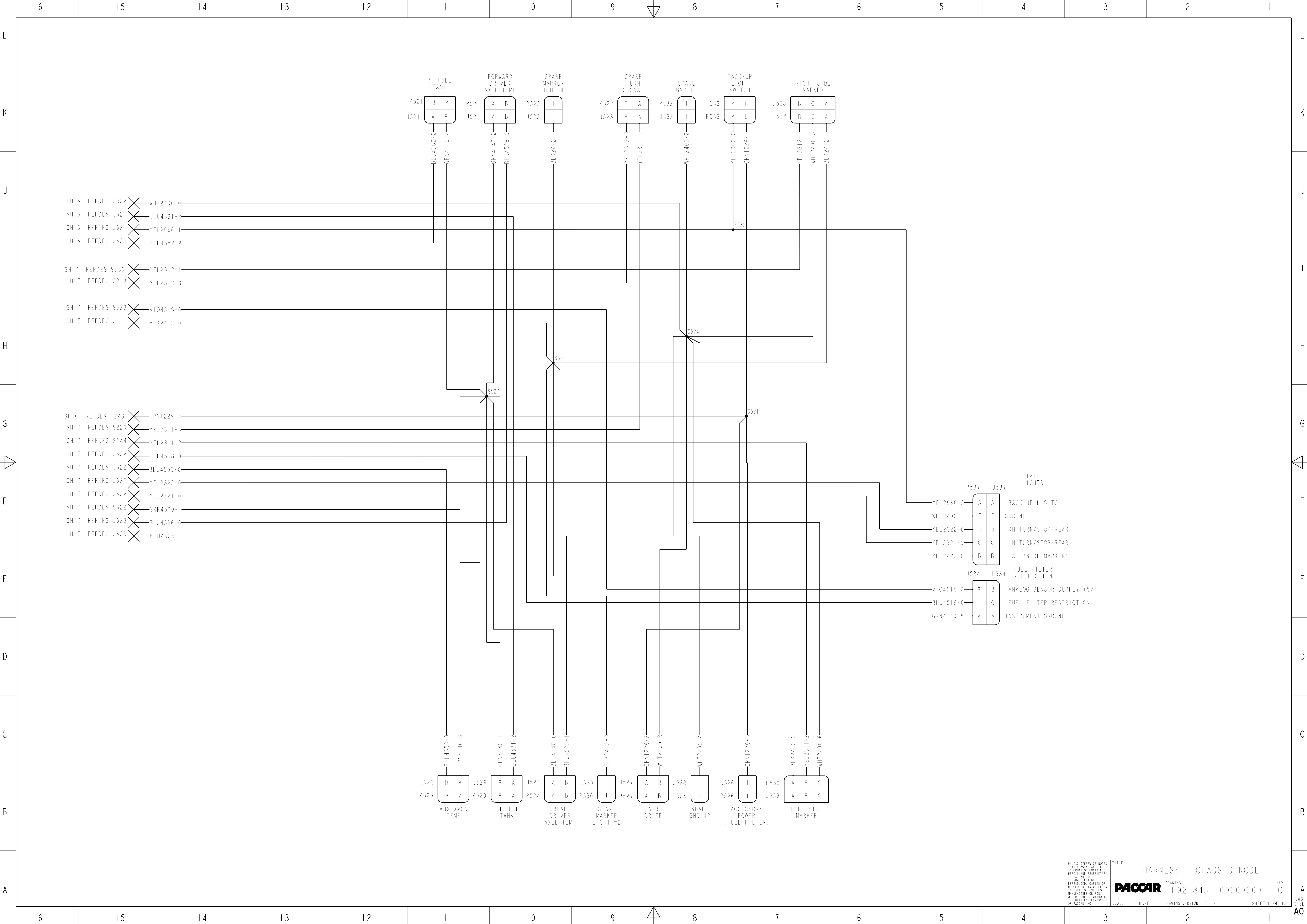


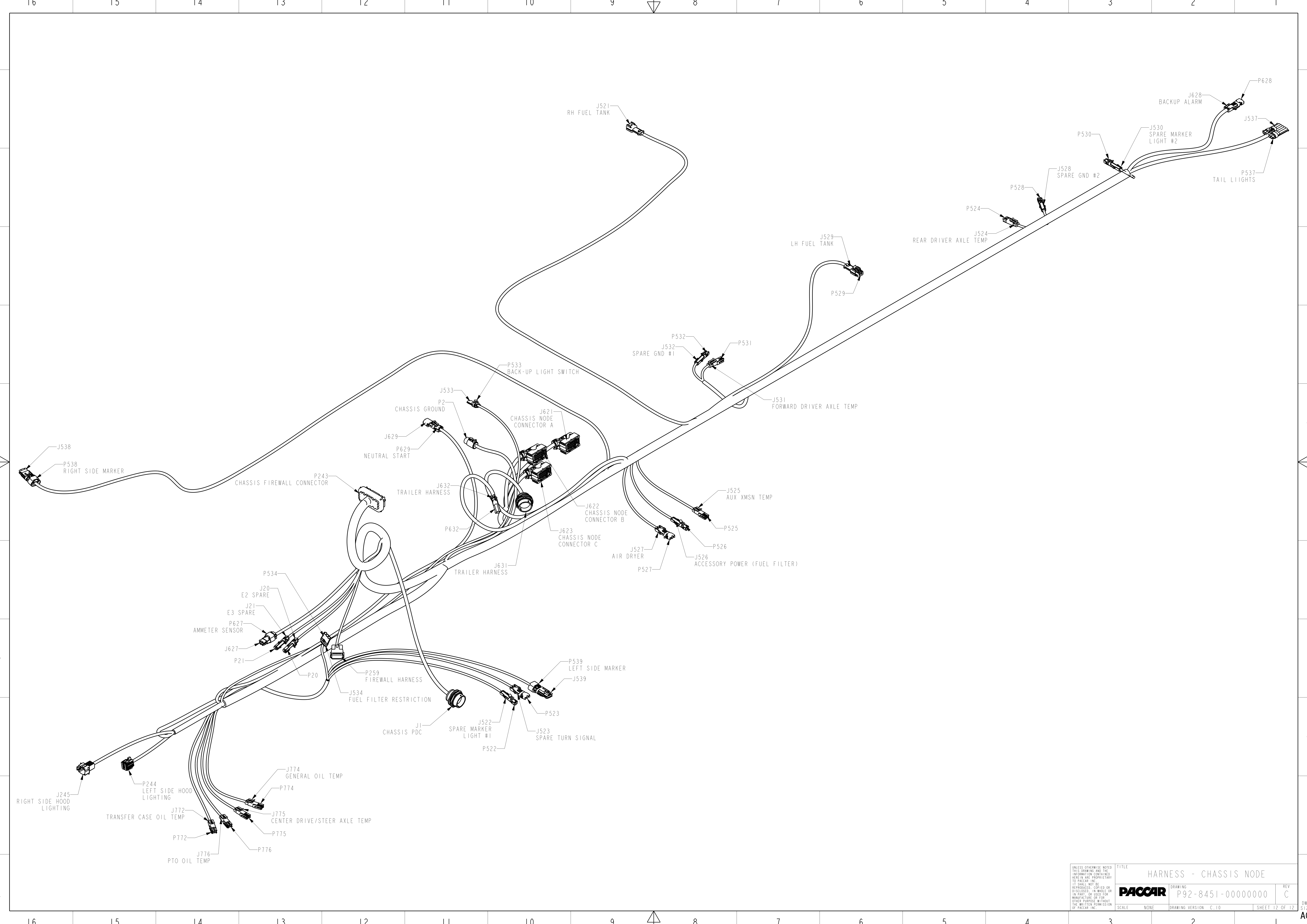












UNLESS OTHERWISE NOTED THIS DRAWING AND THE INFORMATION CONTAINED HEREIN ARE PROPRIETARY TO PACCAR, INC. IT SHALL NOT BE REPRODUCED, COPIED OR DISCLOSED, IN WHOLE OR IN PART, OR USED FOR MANUFACTURE OR FOR OTHER PURPOSE WITHOUT THE WRITTEN PERMISSION OF PACCAR, INC.		TITLE HARNES - CHASSIS NODE	
		SCALE NONE	REV C
DRAWING P92-8451-00000000		DRAWING VERSION C.10	SHEET 12 OF 12

A
DWG
SIZE
AO