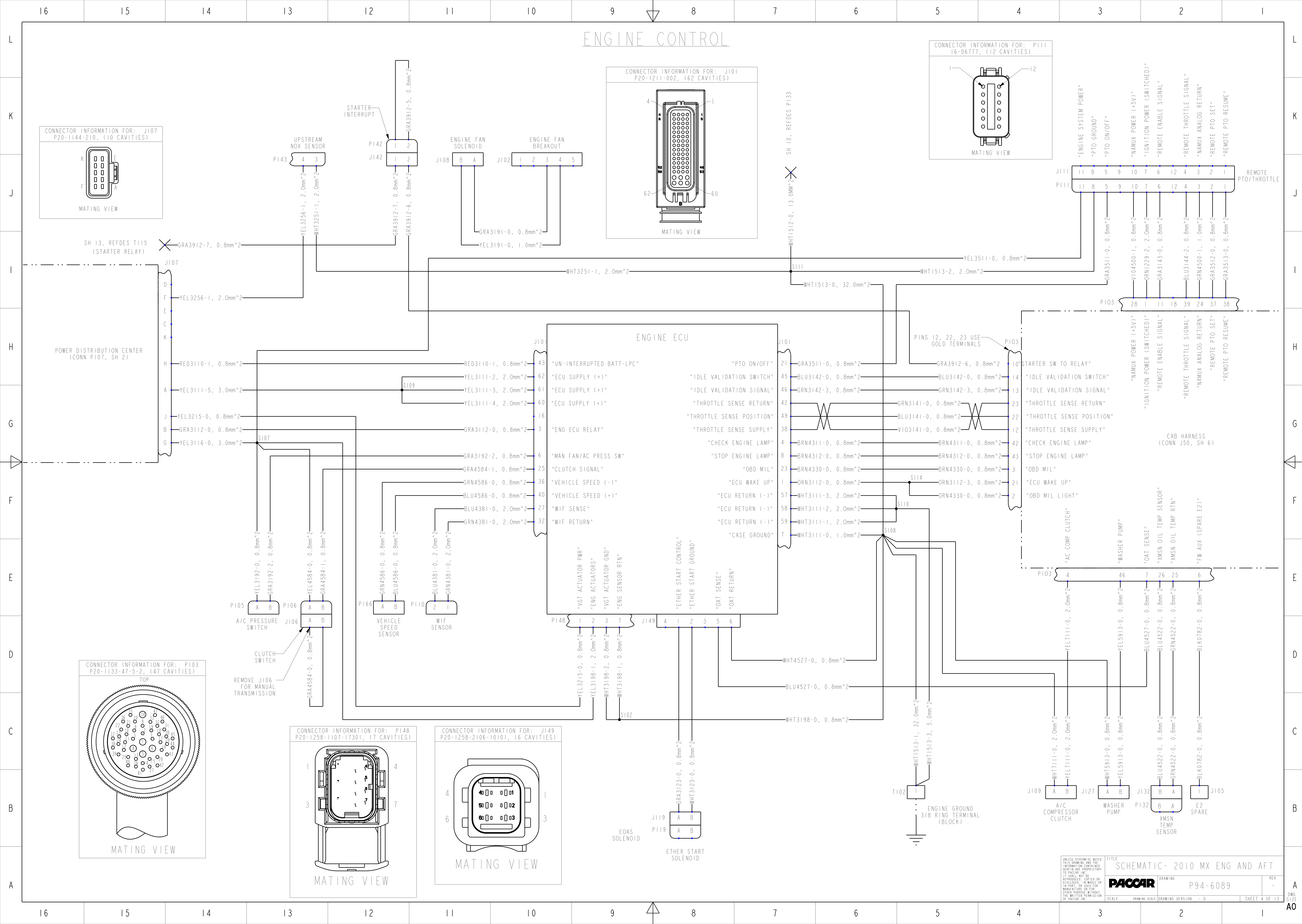
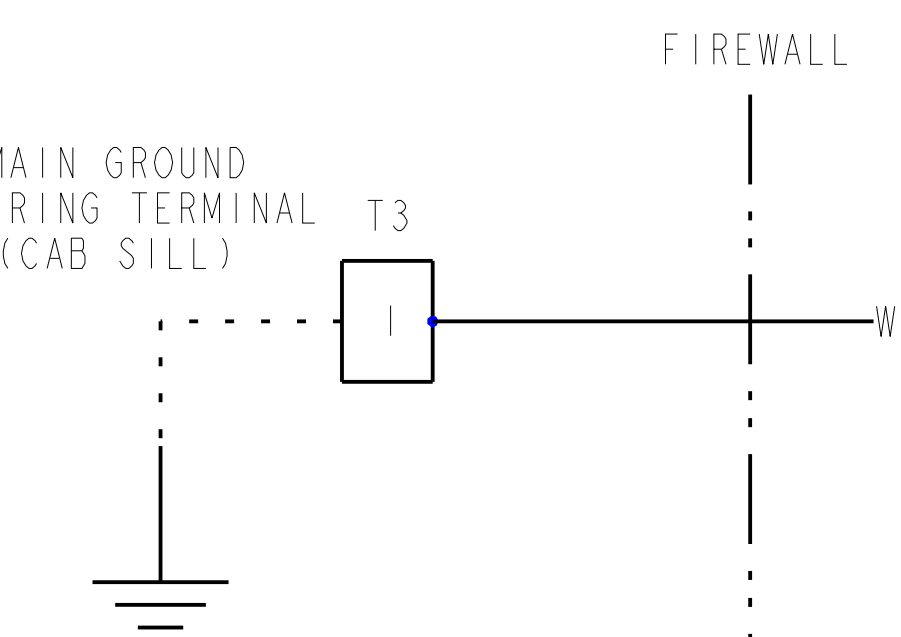
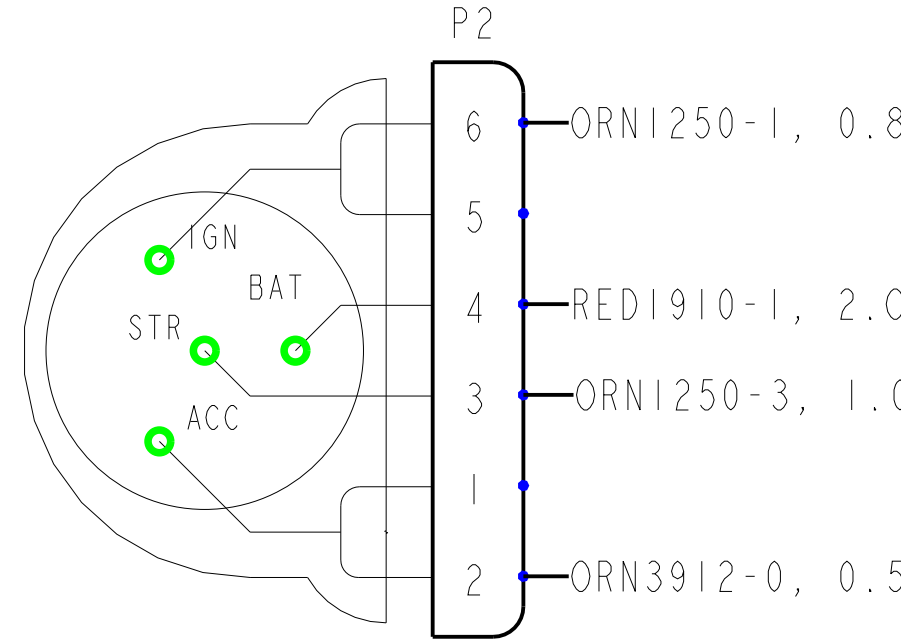
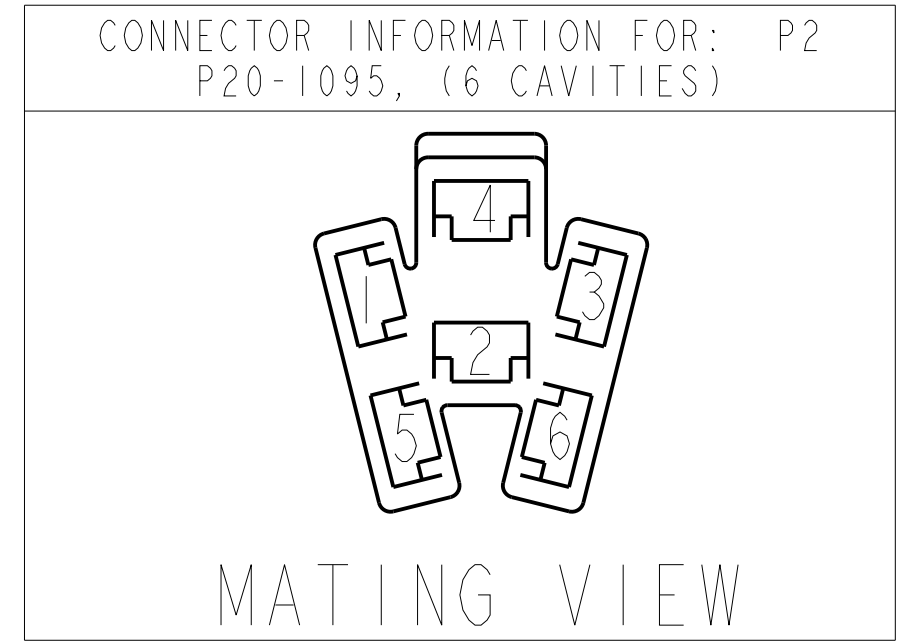
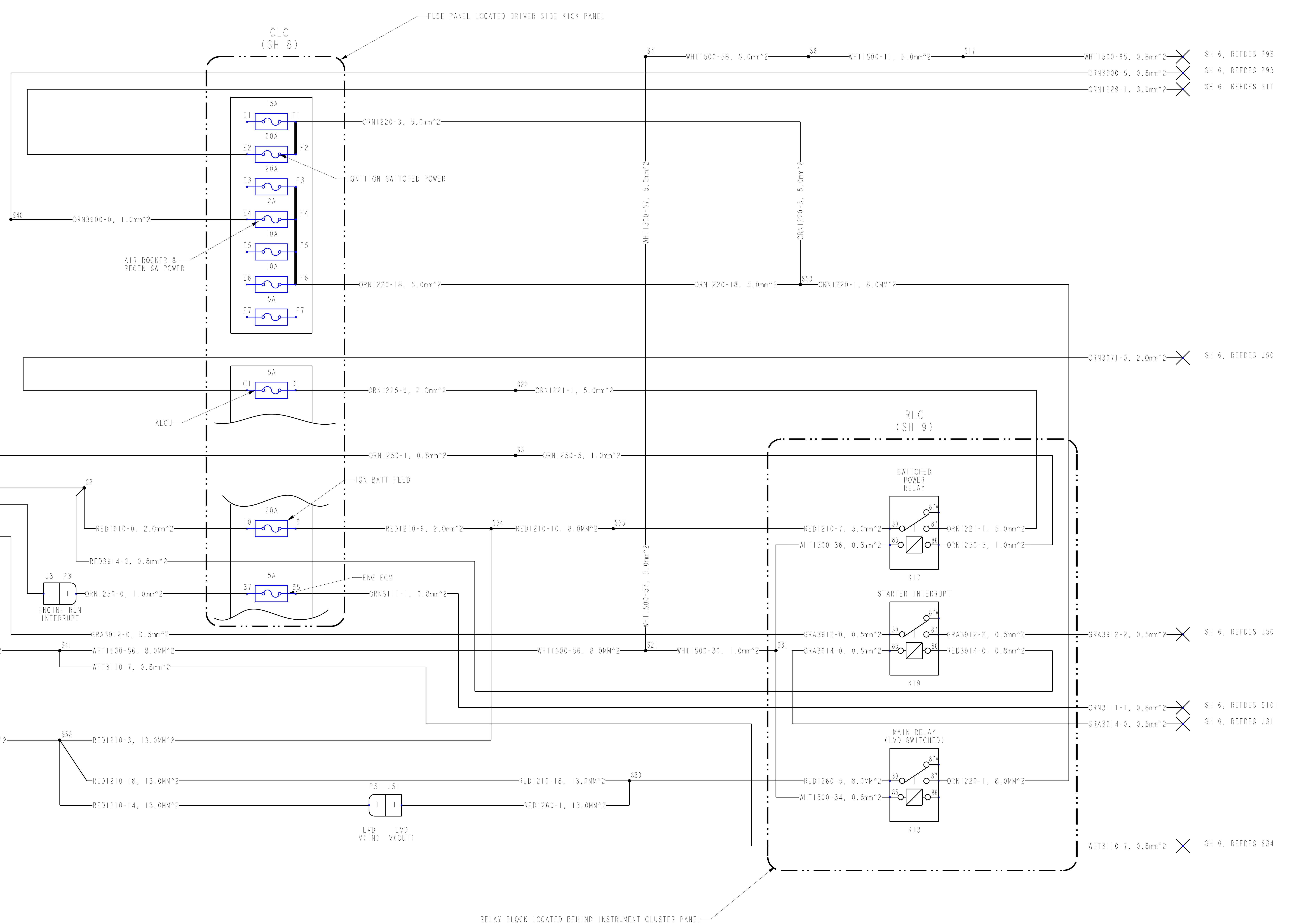


UNLESS OTHERWISE NOTED THIS DRAWING AND THE INFORMATION CONTAINED HEREIN ARE PROPRIETARY TO PACCAR, INC. IT SHALL NOT BE REPRODUCED, COPIED OR DISCLOSED, IN WHOLE OR IN PART, OR USED FOR MANUFACTURE OR FOR OTHER PURPOSE WITHOUT THE WRITTEN PERMISSION OF PACCAR, INC.	TITLE		SCHEMATIC- 2010 MX ENG AND AFT		TITLE	
	DRAWING		P94-6089		REV	
	SCALE		DRAWING SCALE DRAWING VERSION - 0		SHEET 3 OF 13	
					A DWG SIZE A0	

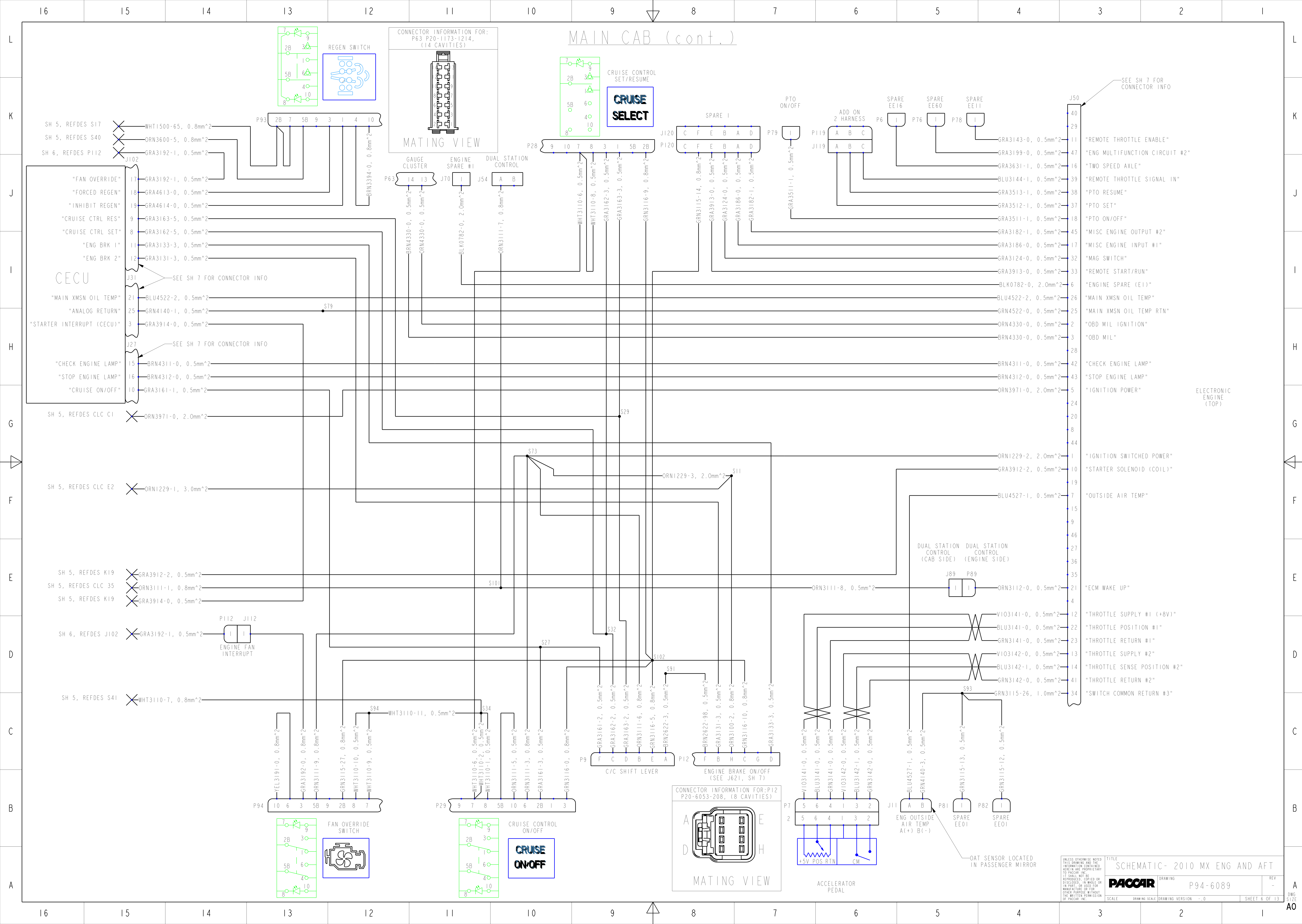




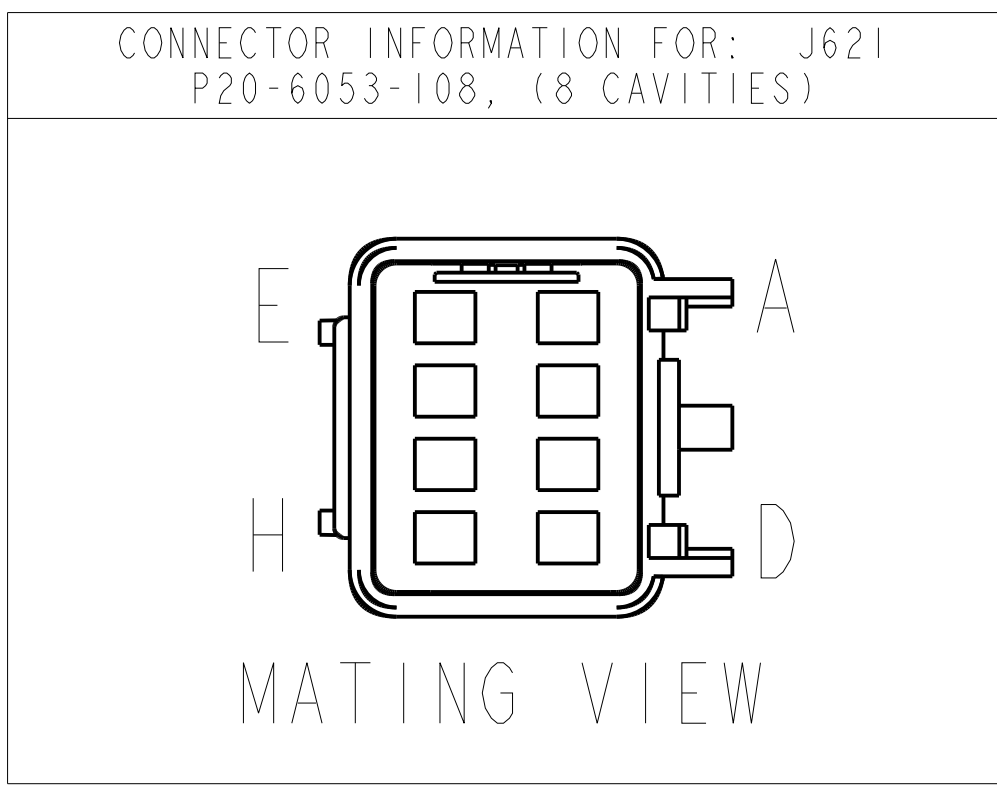
SH 13, REFDES T4
(CHARGE AND START)



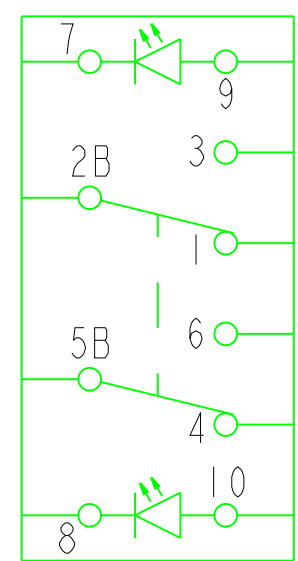
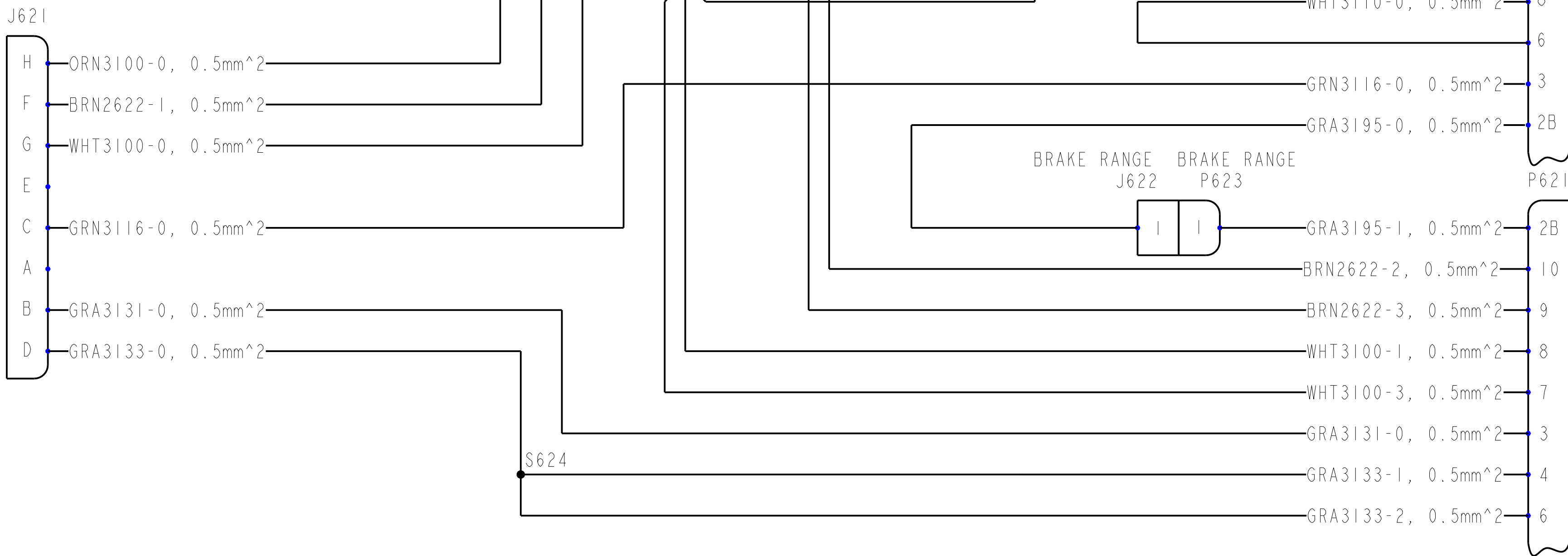
UNLESS OTHERWISE NOTED THIS DRAWING AND THE INFORMATION CONTAINED HEREIN ARE PROPRIETARY TO PACCAR, INC. IT SHALL NOT BE REPRODUCED, COPIED OR DISCLOSED, IN WHOLE OR IN PART, OR USED FOR MANUFACTURE OR FOR OTHER PURPOSE WITHOUT THE WRITTEN PERMISSION OF PACCAR, INC.		TITLE SCHEMATIC- 2010 MX ENG AND AFT	
DWG PACCAR	SCALE	DRAWING P94-6089	REV -
DRAWING VERSION - 0	SHEET 5 OF 13		



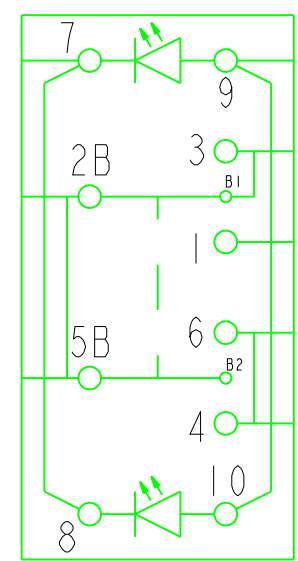
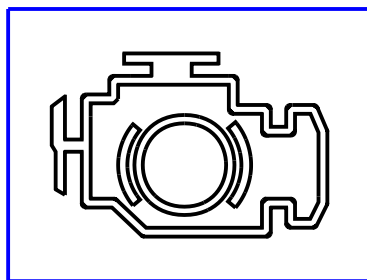
ENGINE BRAKE



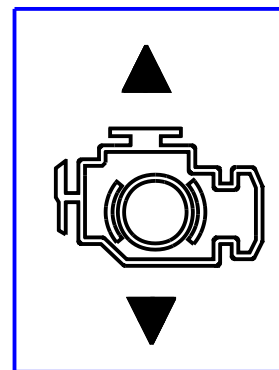
MAIN CAB
(SEE P12, SH 6)



ENGINE BRAKE
ON/OFF

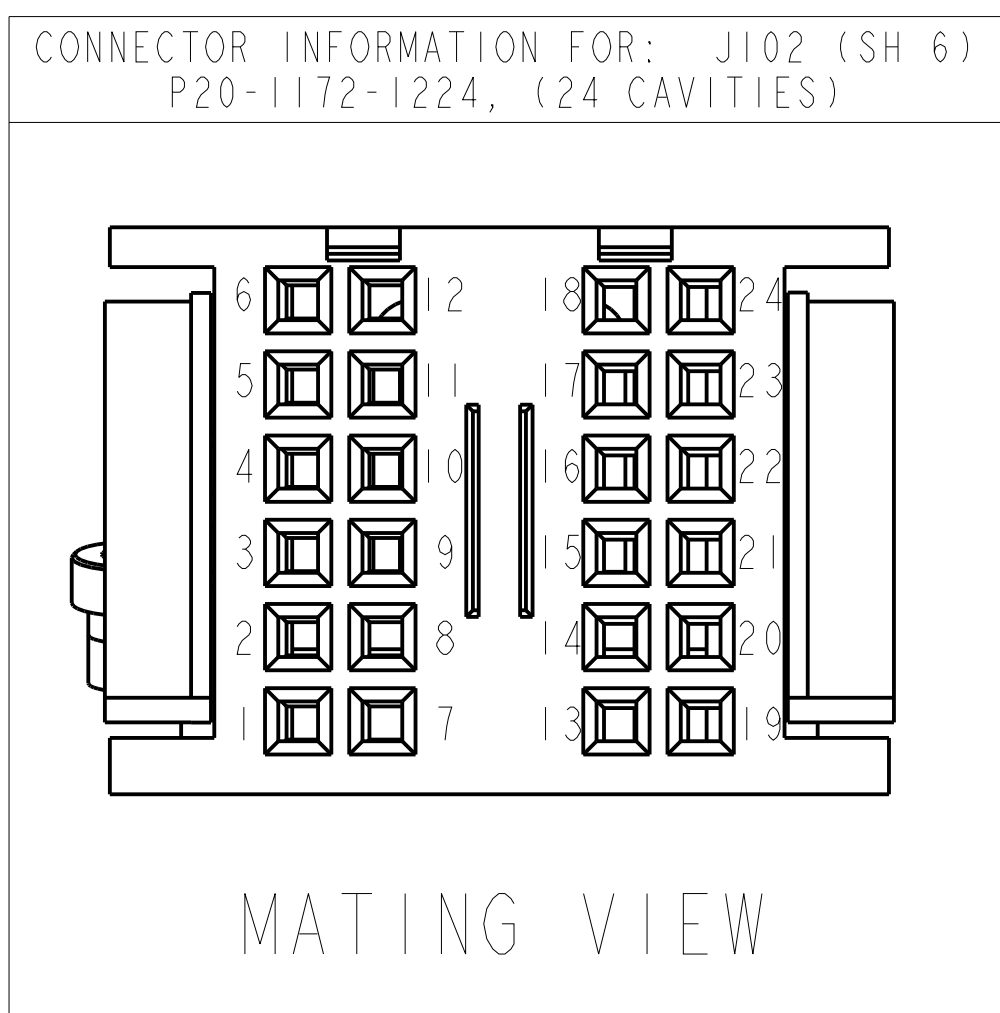


ENGINE
BRAKE RANGE

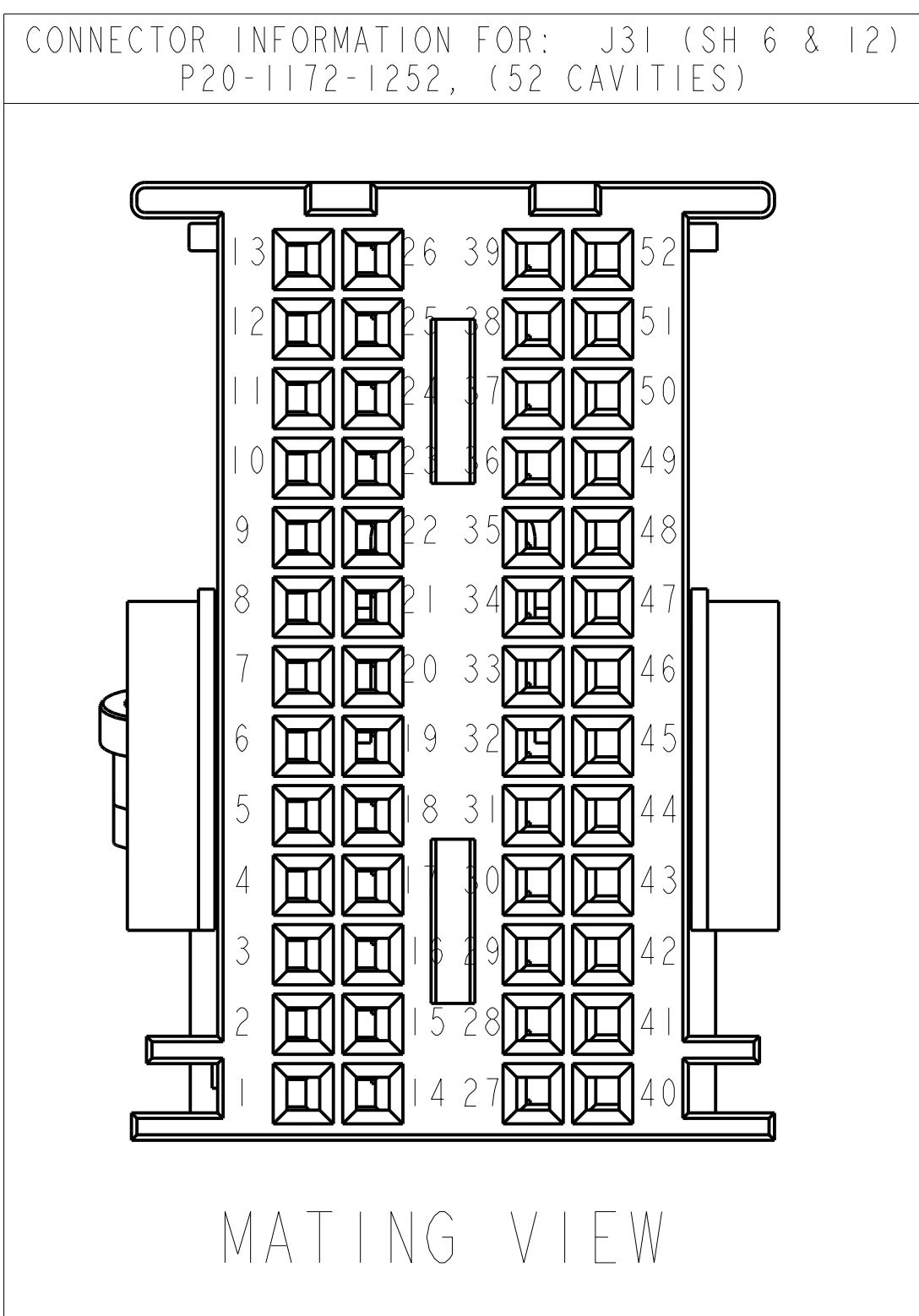


CONNECTOR INFORMATION

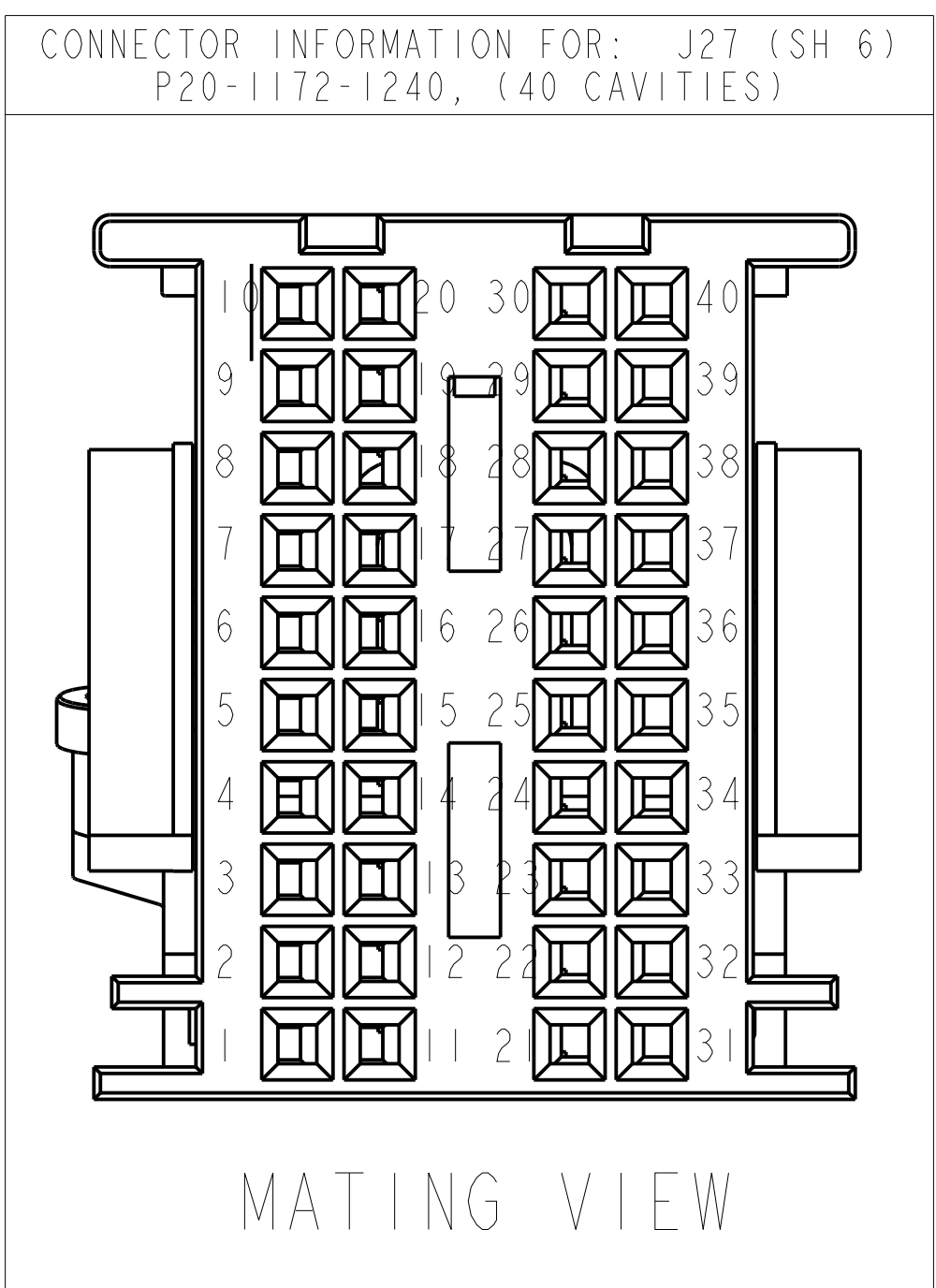
TO CECU



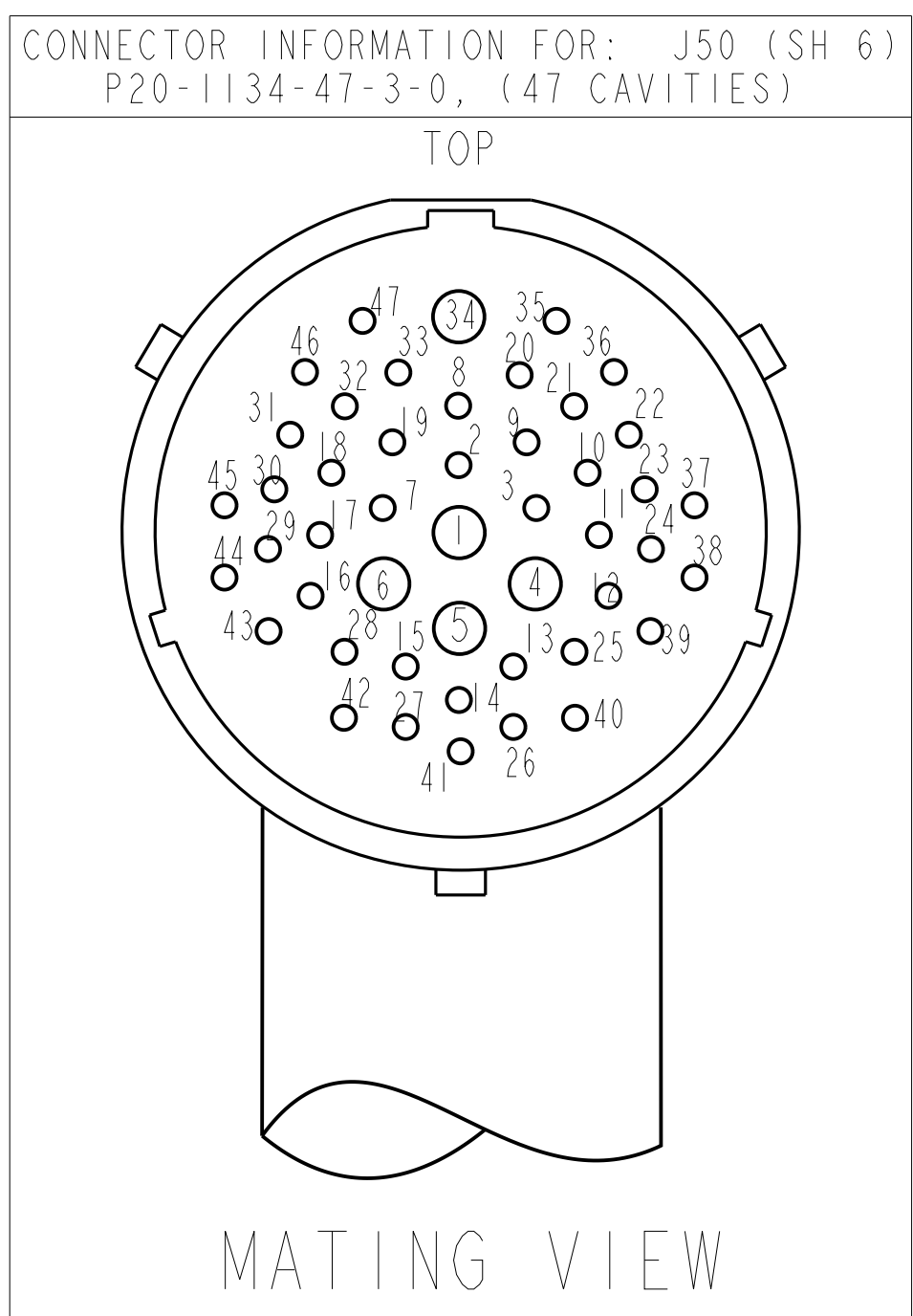
TO CECU



TO CECU



ENGINE
BULKHEAD



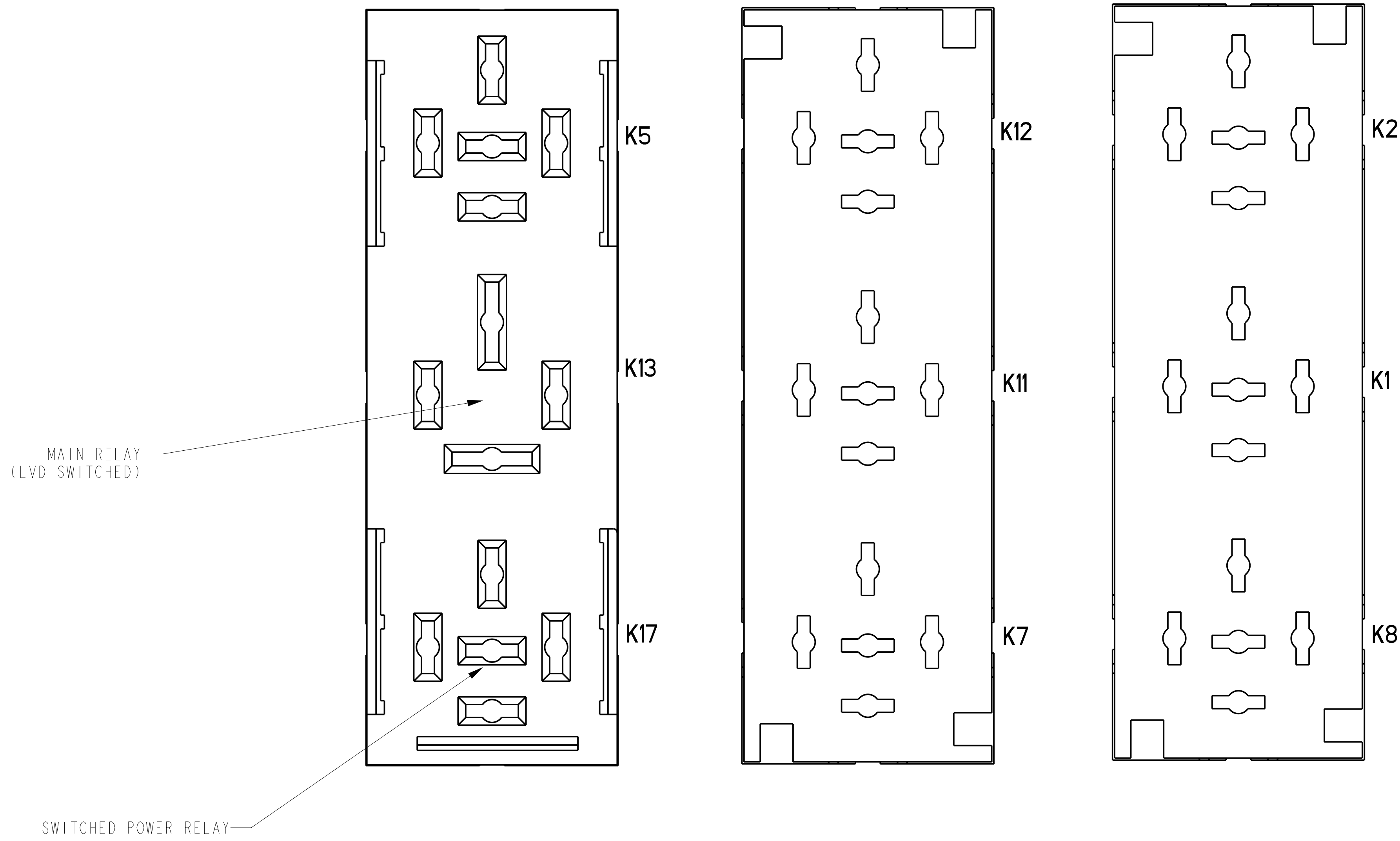
(SEE LABEL IN KICK PANEL FOR FUSE VALUES)



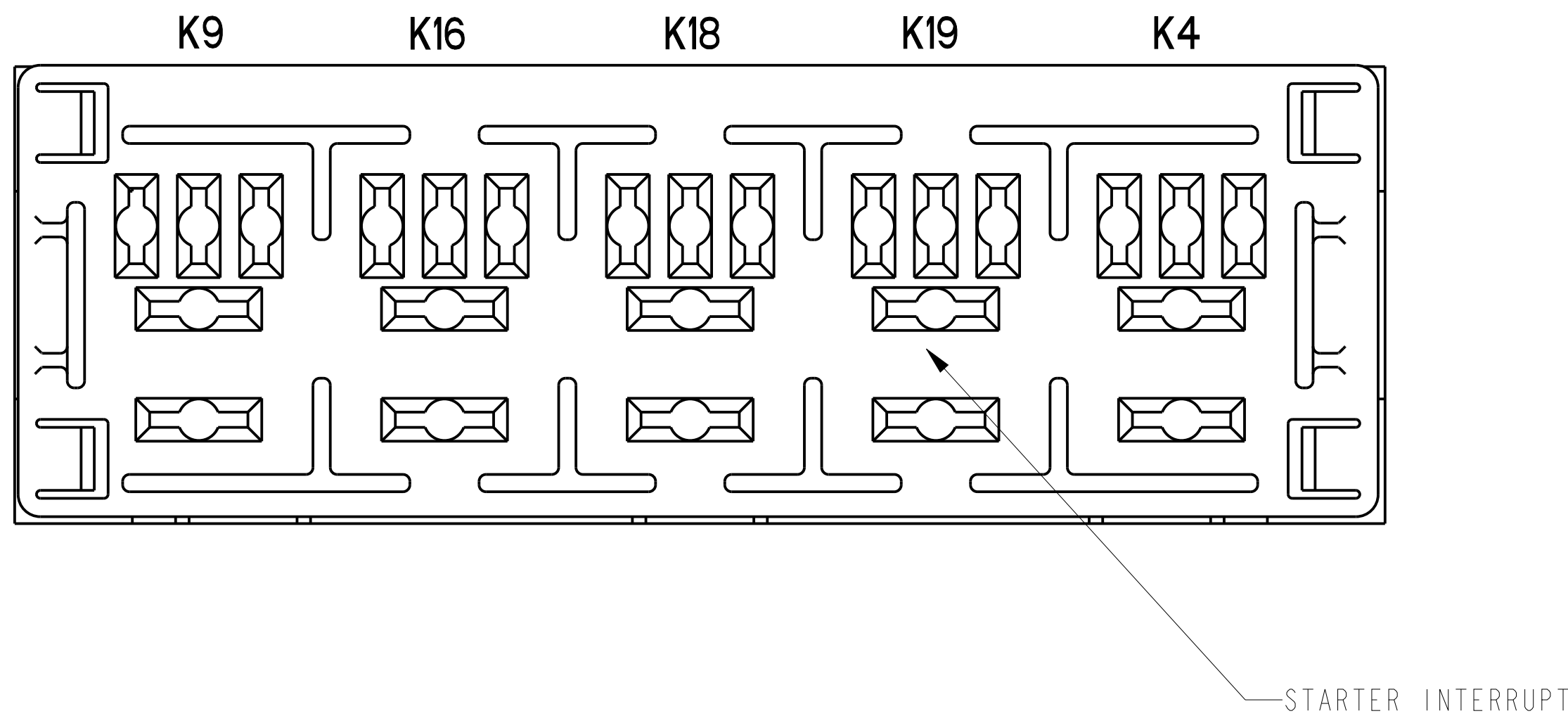
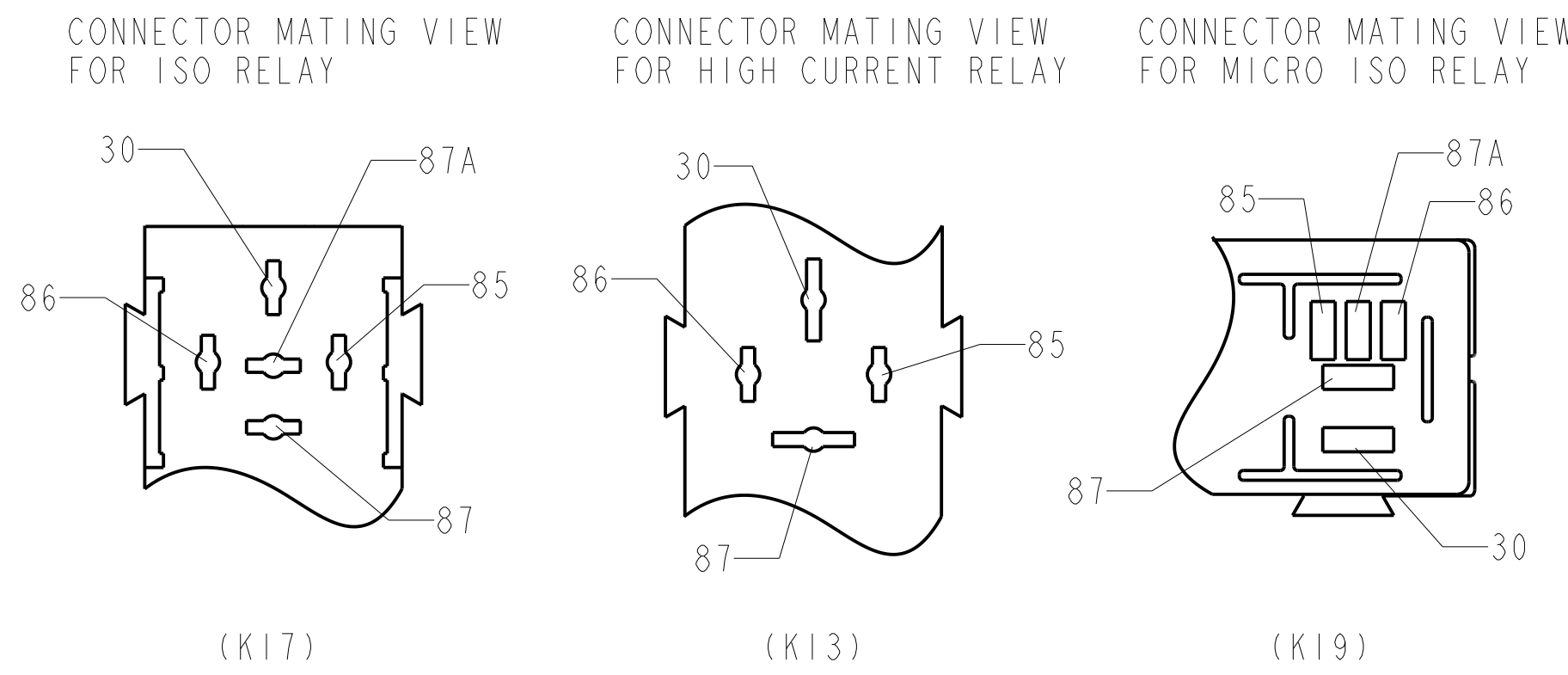
UNLESS OTHERWISE NOTED
THIS DRAWING AND THE
INFORMATION CONTAINED
HEREIN ARE PROPRIETARY
TO PACCAR INC.
IT SHALL NOT BE
REPRODUCED, COPIED OR
DISCLOSED, IN WHOLE OR
IN PART, OR USED FOR
MANUFACTURE OR FOR
ANY OTHER PURPOSE WITHOUT
THE WRITTEN PERMISSION
OF PACCAR INC.

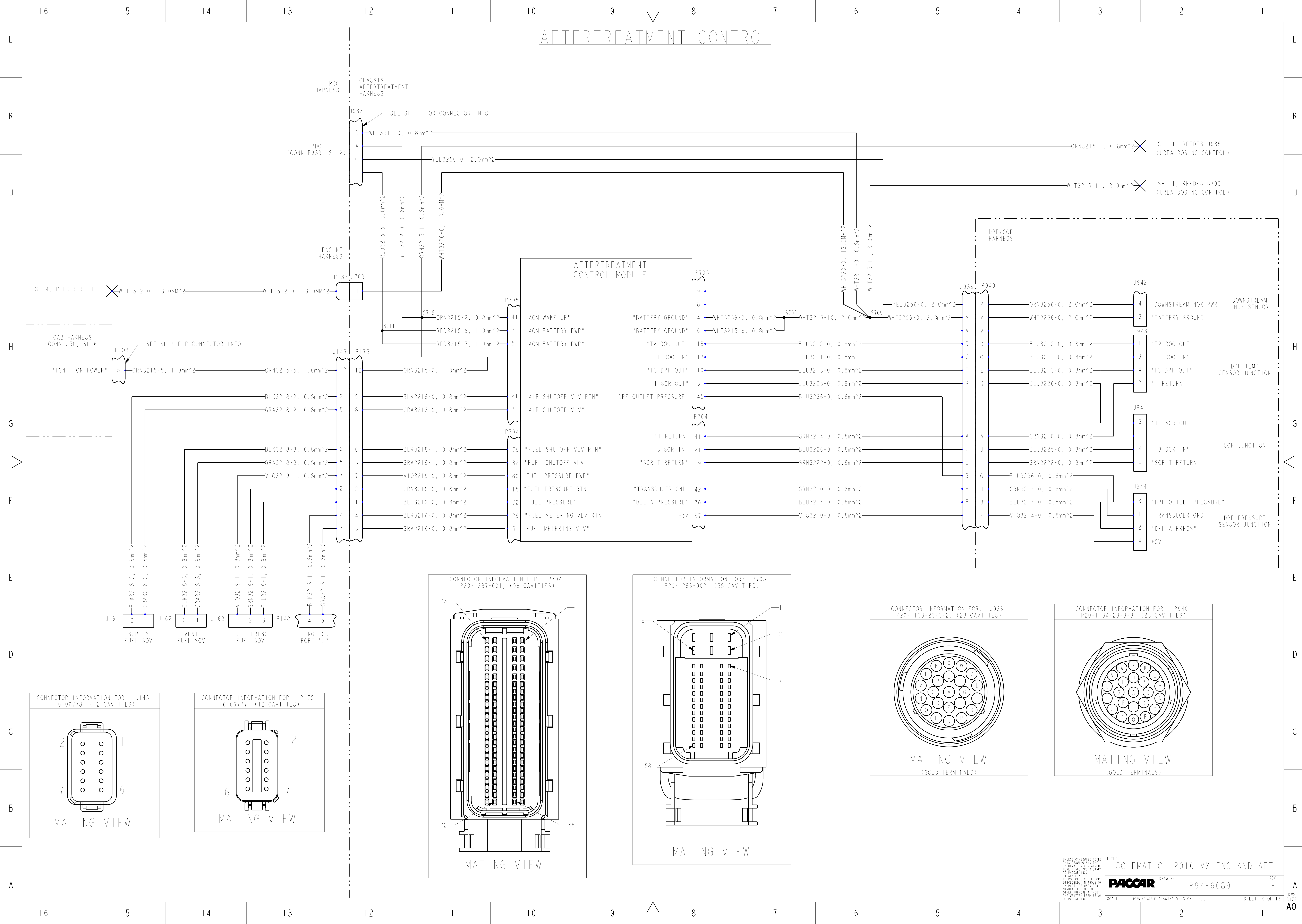
TITLE			
SCHEMATIC- 2010 MX ENG AND AFT			
PACCAR		DRAWING P94-6089	REV -
SCALE	DRAWING SCALE	DRAWING VERSION - .0	SHEET 8 OF 13

RELAY LOAD CENTER
(EXPLODED)

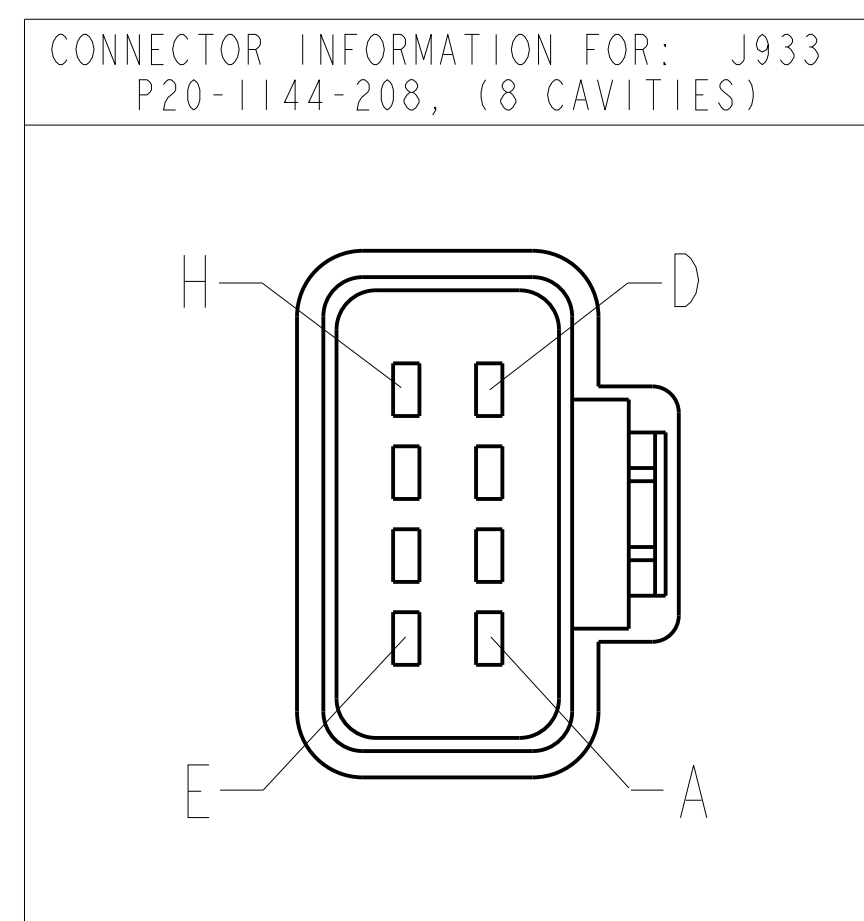
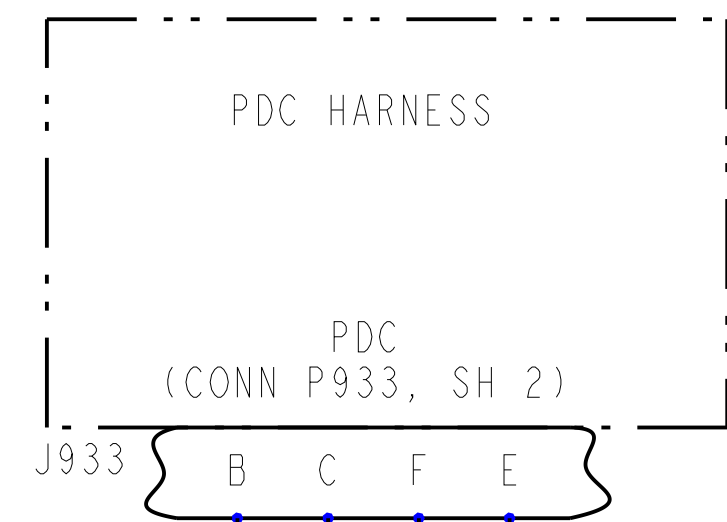


RELAY TERMINAL BLOCK CONFIGURATION



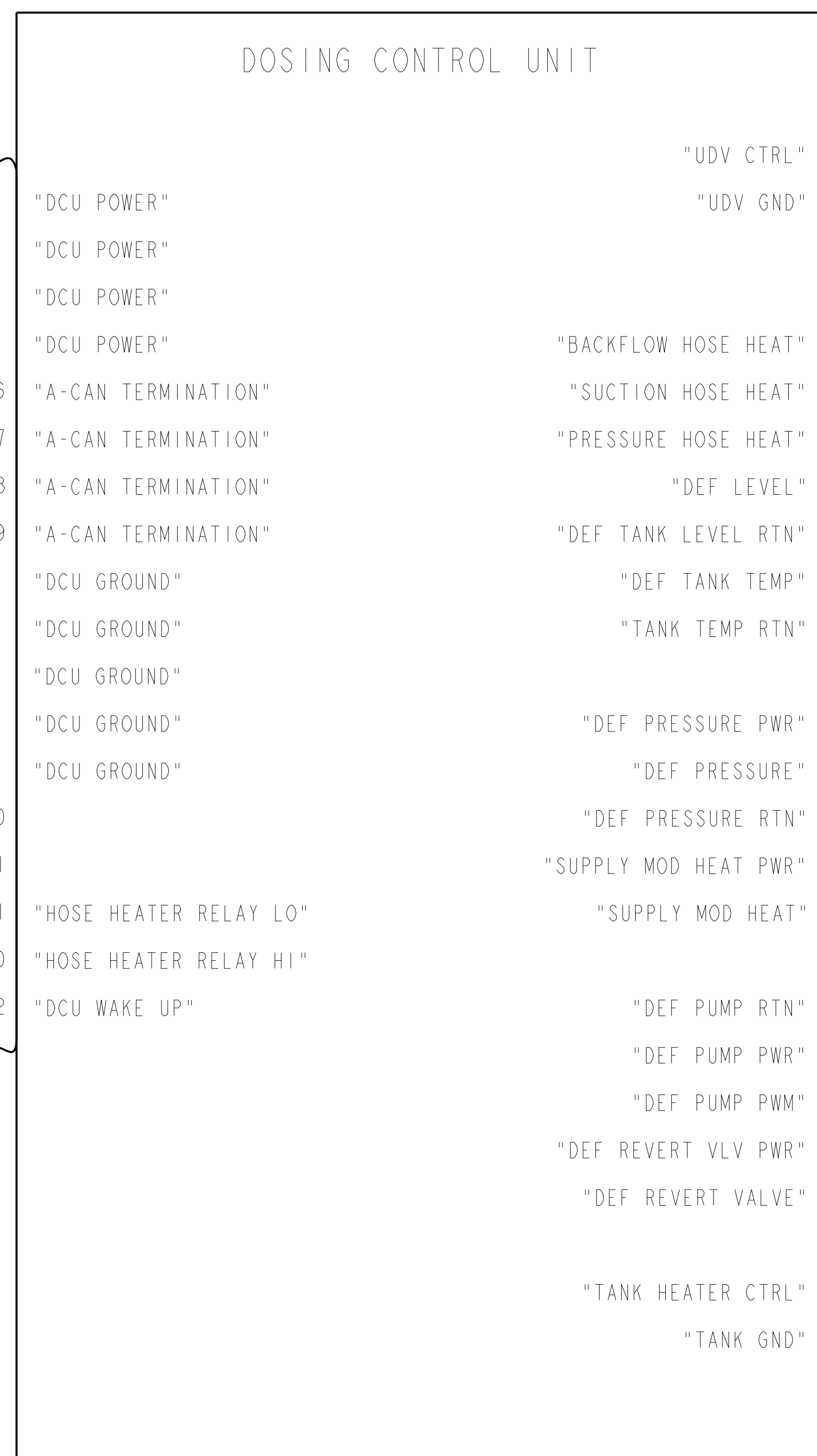
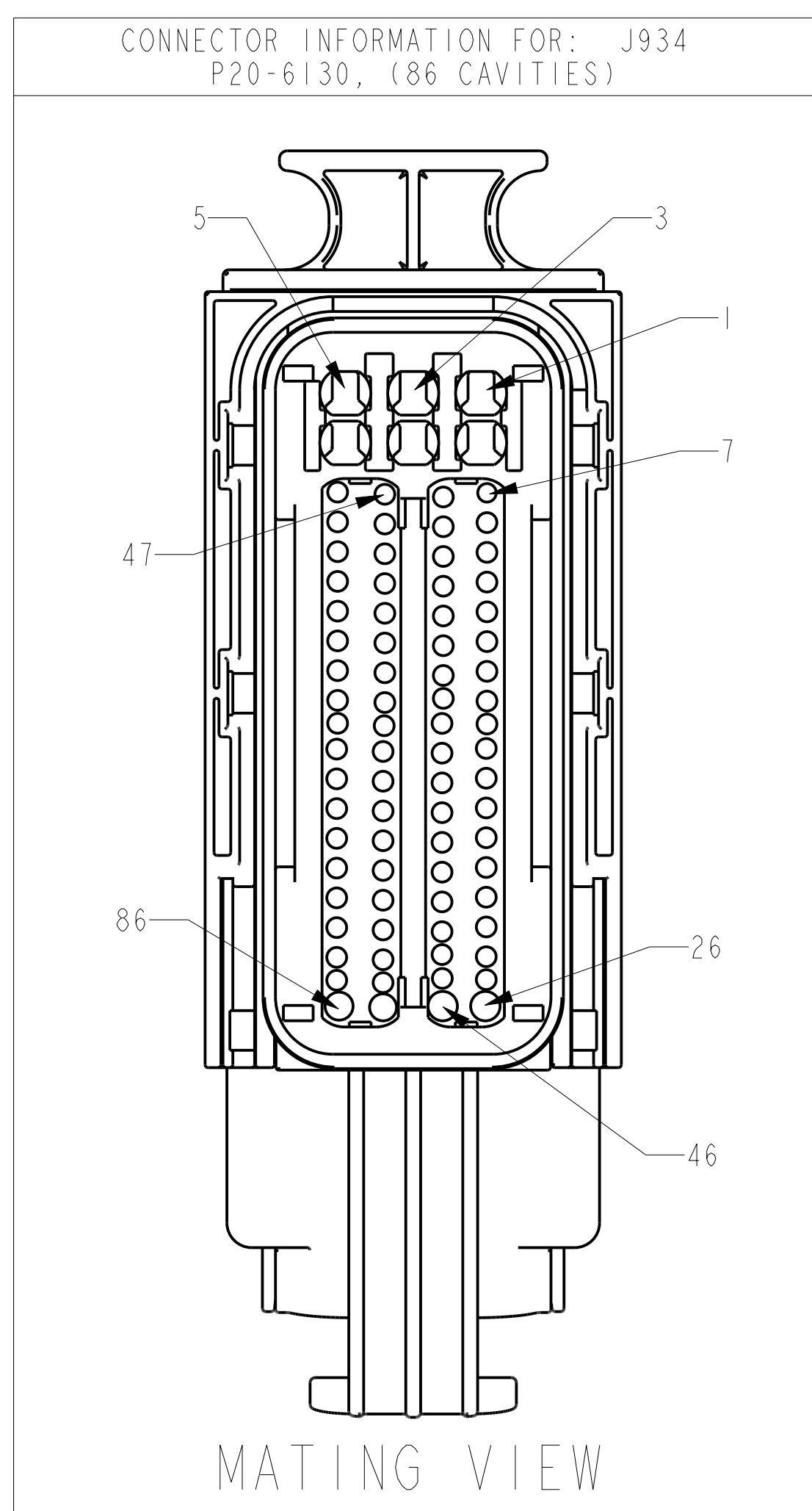
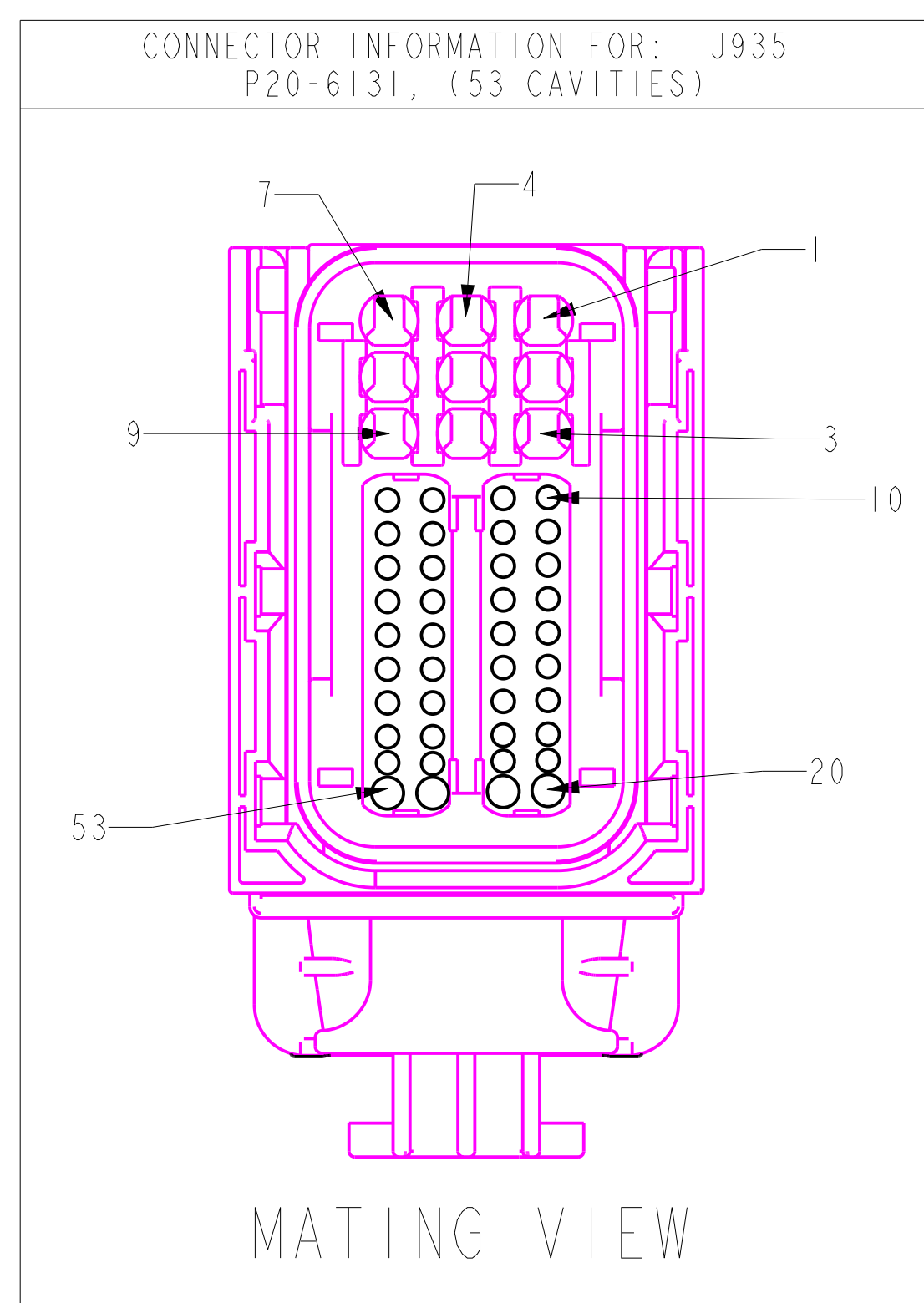


UREA DOSING CONTROL



SH 10, REFDES S709
(AFTERTREATMENT CONTROL)

SH 10, REFDES S715
(AFTERTREATMENT CONTROL)



GOLD TERMINALS

CHASSIS
AFTERTREATMENT
HARNESS

DPF/SCR
HARNESS

SEE SH 10 FOR CONNECTOR INFO

DEF TANK
HARNESS

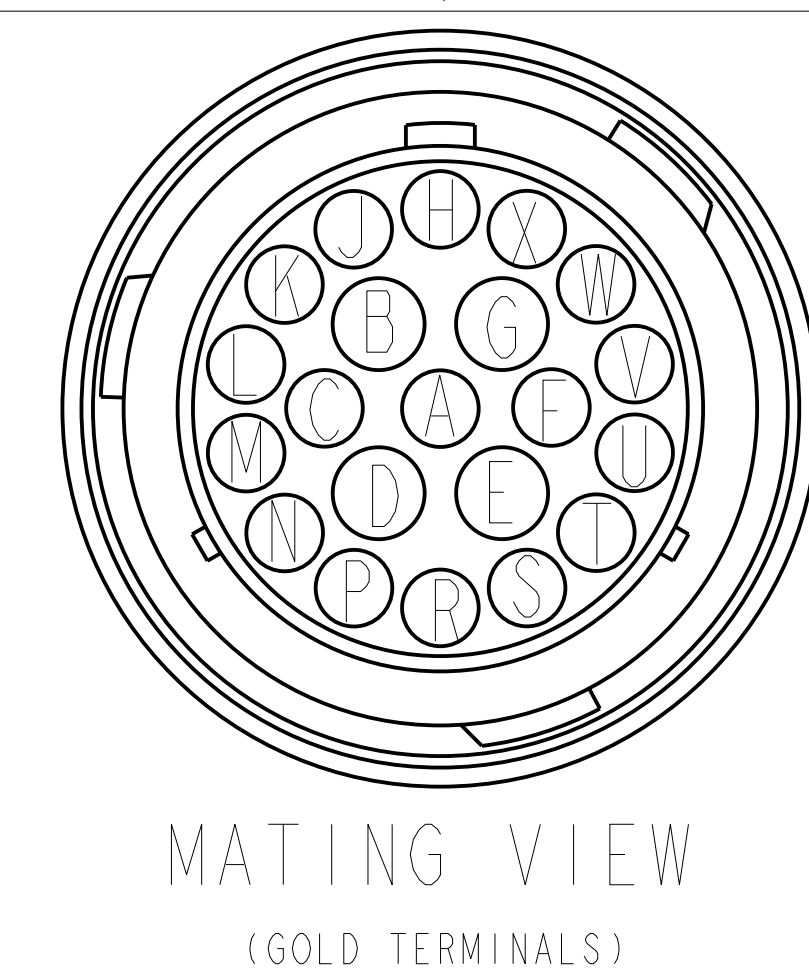
J937

J956

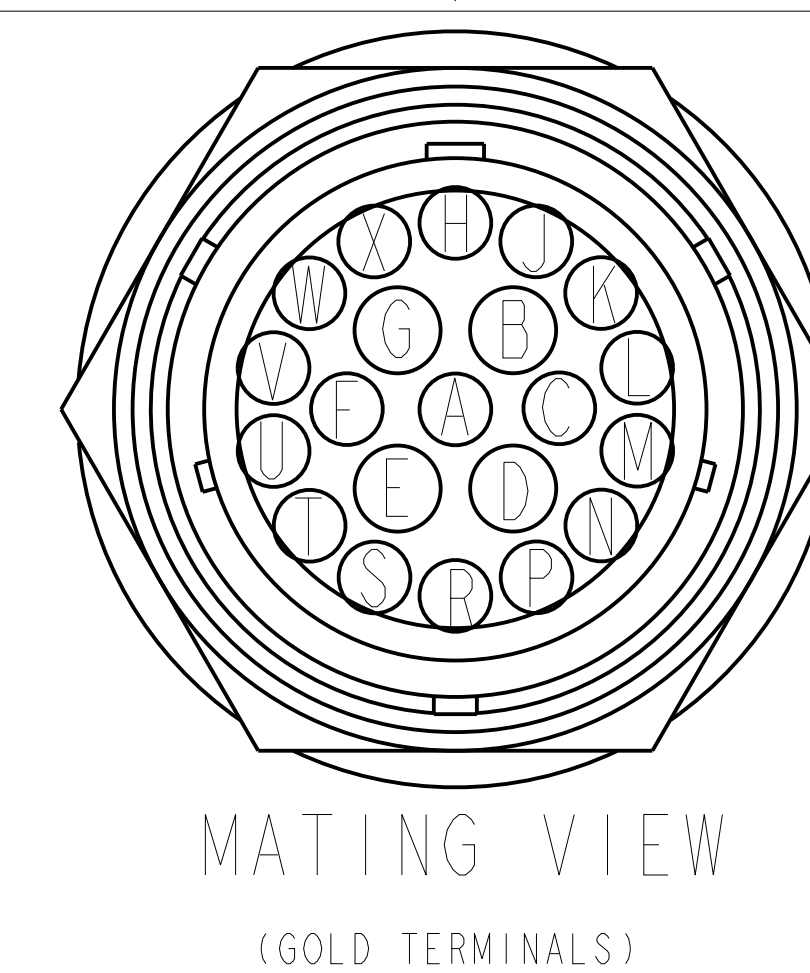
J932

DEF TANK
HEATER VALVE

CONNECTOR INFORMATION FOR: J937
P20-1133-21-B-C, (21 CAVITIES)



CONNECTOR INFORMATION FOR: J956
P20-1134-21-B-C, (21 CAVITIES)



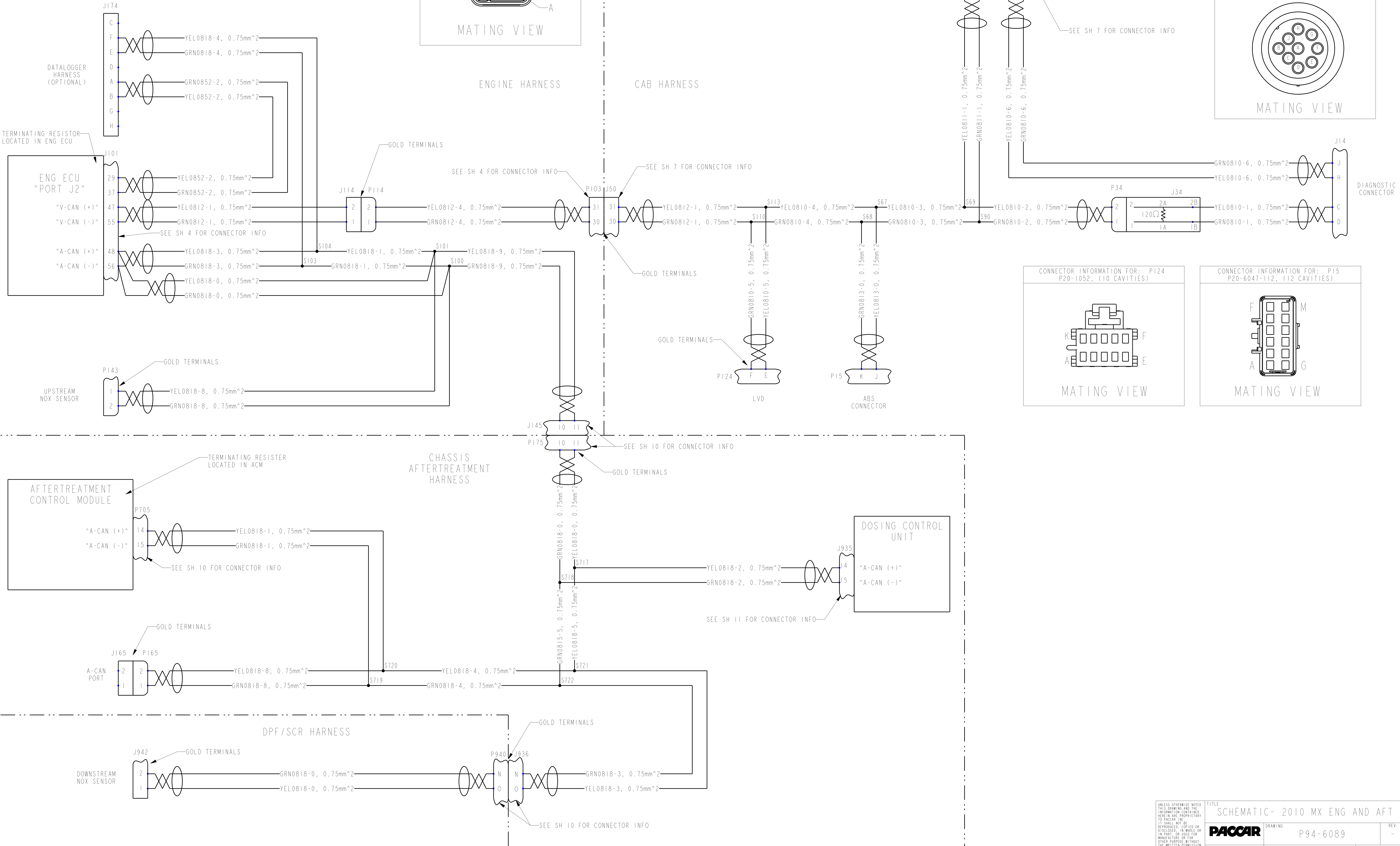
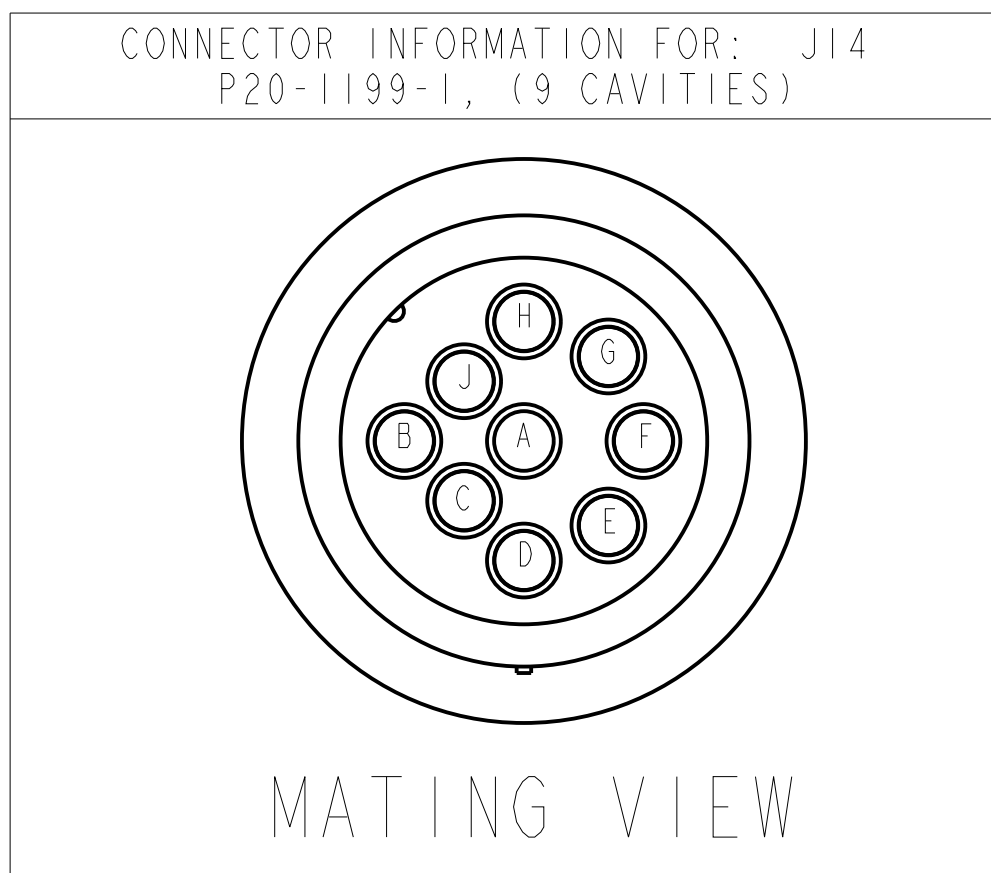
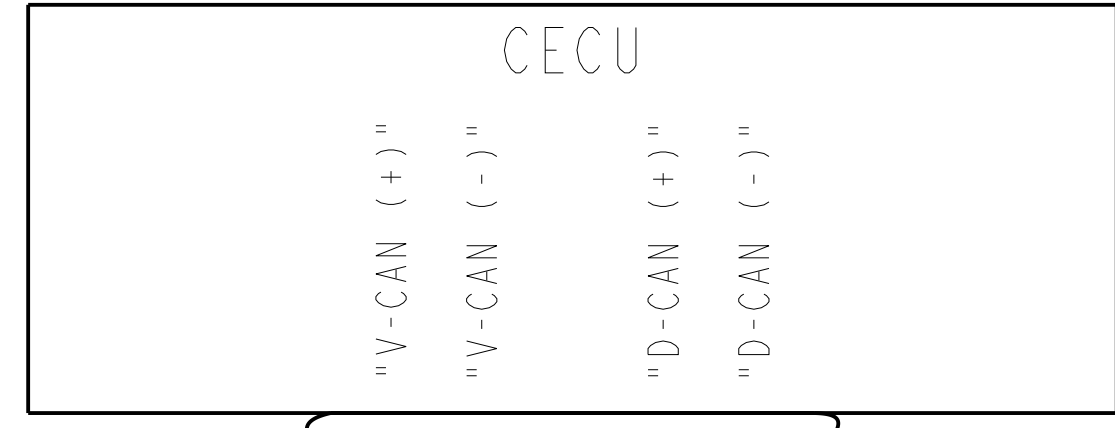
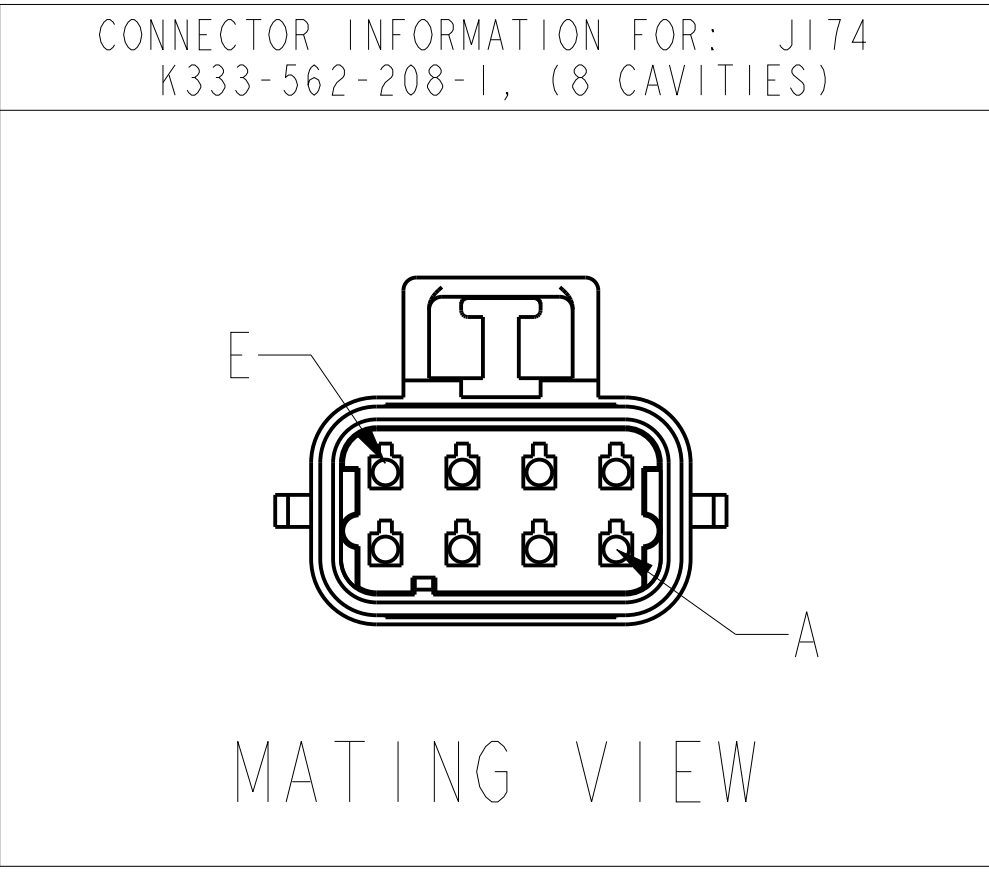
UNLESS OTHERWISE NOTED
THIS DRAWING AND THE
INFORMATION CONTAINED
HEREIN ARE PROPRIETARY
TO PACCAR INC.
IT SHALL NOT BE
REPRODUCED, COPIED OR
DISSEMINATED IN WHOLE OR
IN PART, OR USED FOR
MANUFACTURE OR FOR
OTHER PURPOSE WITHOUT
THE WRITTEN PERMISSION
OF PACCAR INC.

TITLE
SCHEMATIC- 2010 MX ENG AND AFT
DRAWING
P94-6089
REV
-
SCALE
DRAWING SCALE
DRAWING VERSION
- 0
SHEET 11 OF 13

A
DWG
SIZE
AO

J1939 DATABUS

NOTE:
A-CAN: AFTERTREATMENT DATABUS
V-CAN: VEHICLE DATABUS (POWERTRAIN)
-ENGINE
-TRANSMISSION
-ABS
-INSTRUMENTATION
-VORAD



CHARGE AND START

