

16

15

14

13

12

11

10

9

8

7

6

5

4

3

2

1

L

K

J

I

H

G

F

E

D

C

B

A

16

15

14

13

12

11

10

9

8

7

6

5

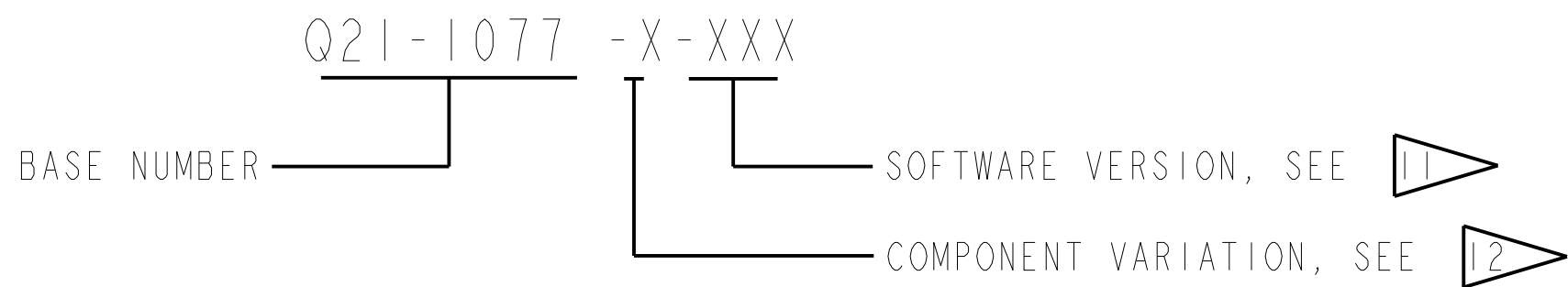
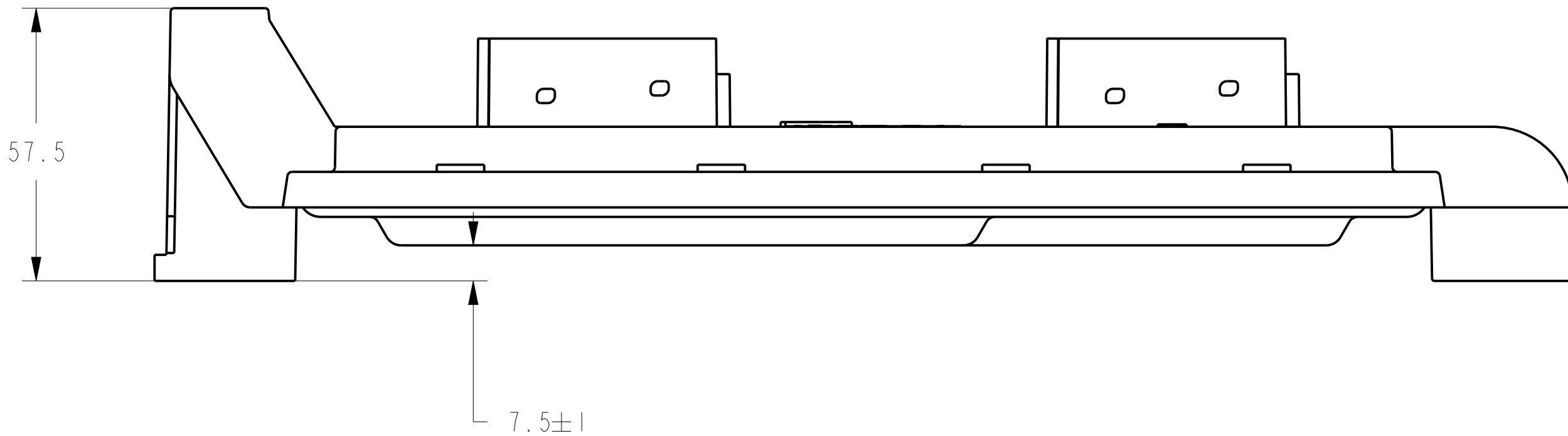
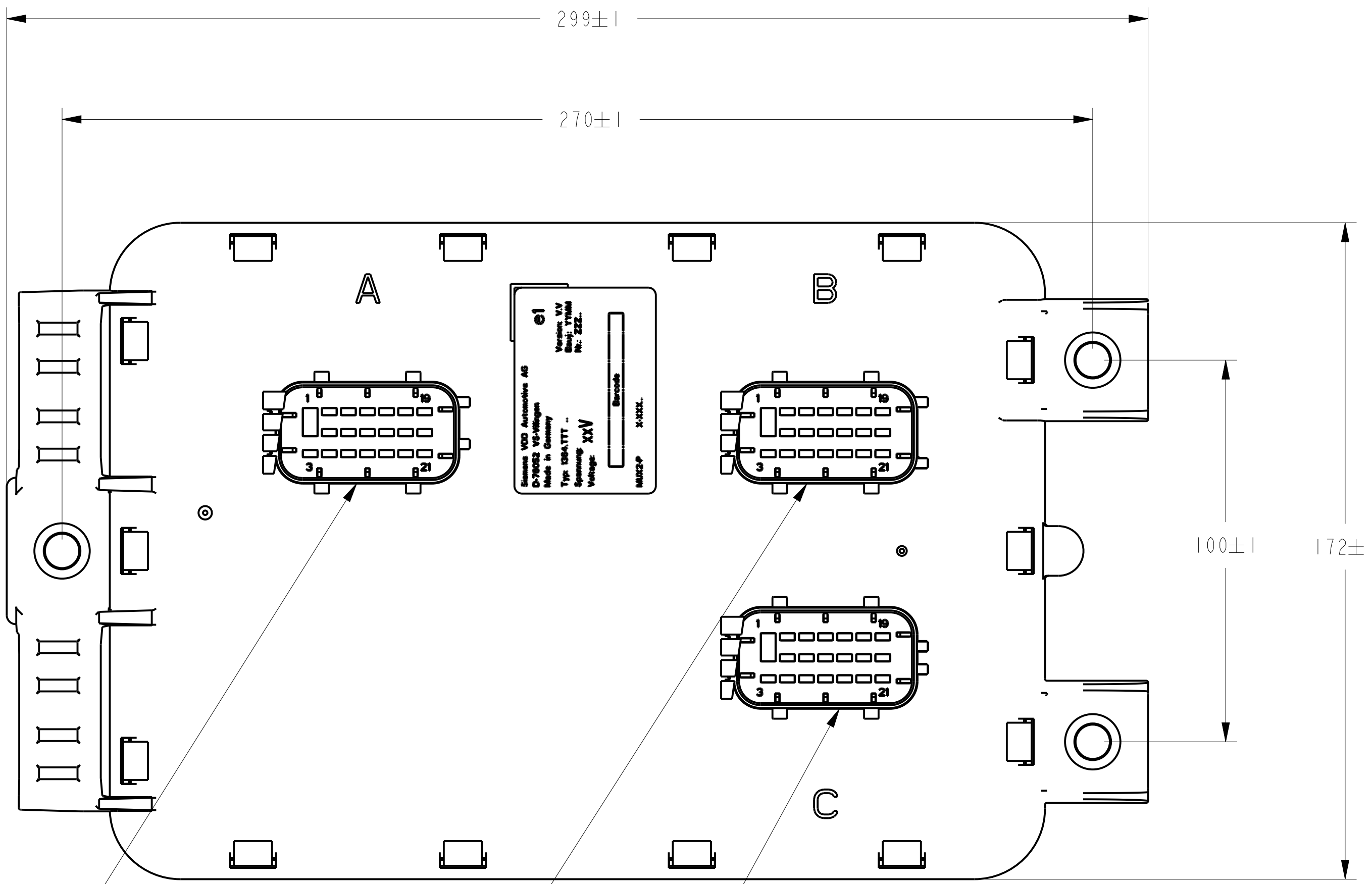
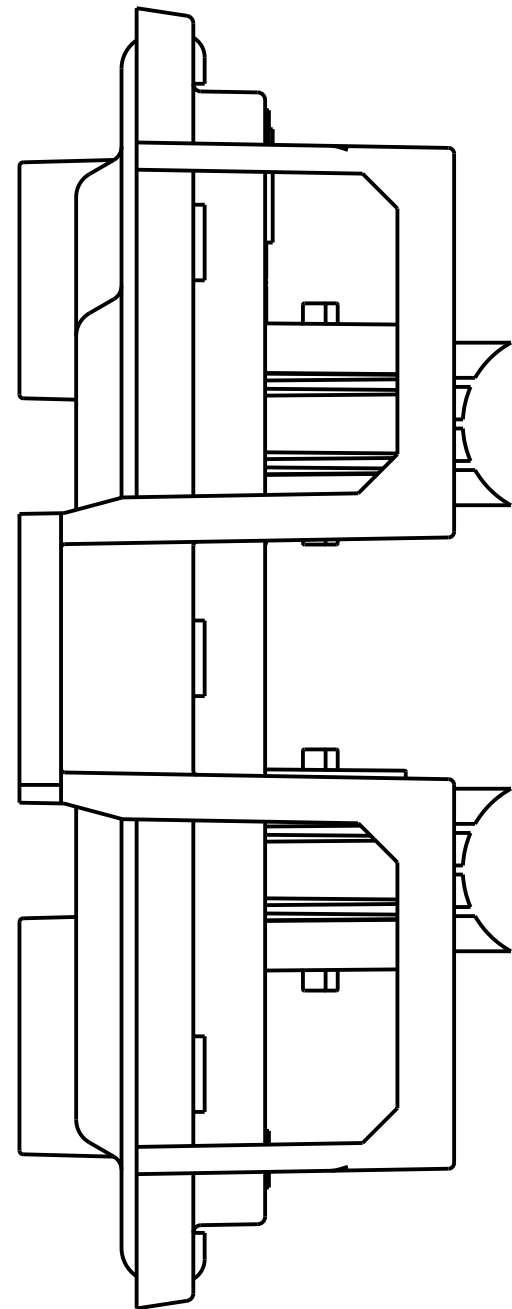
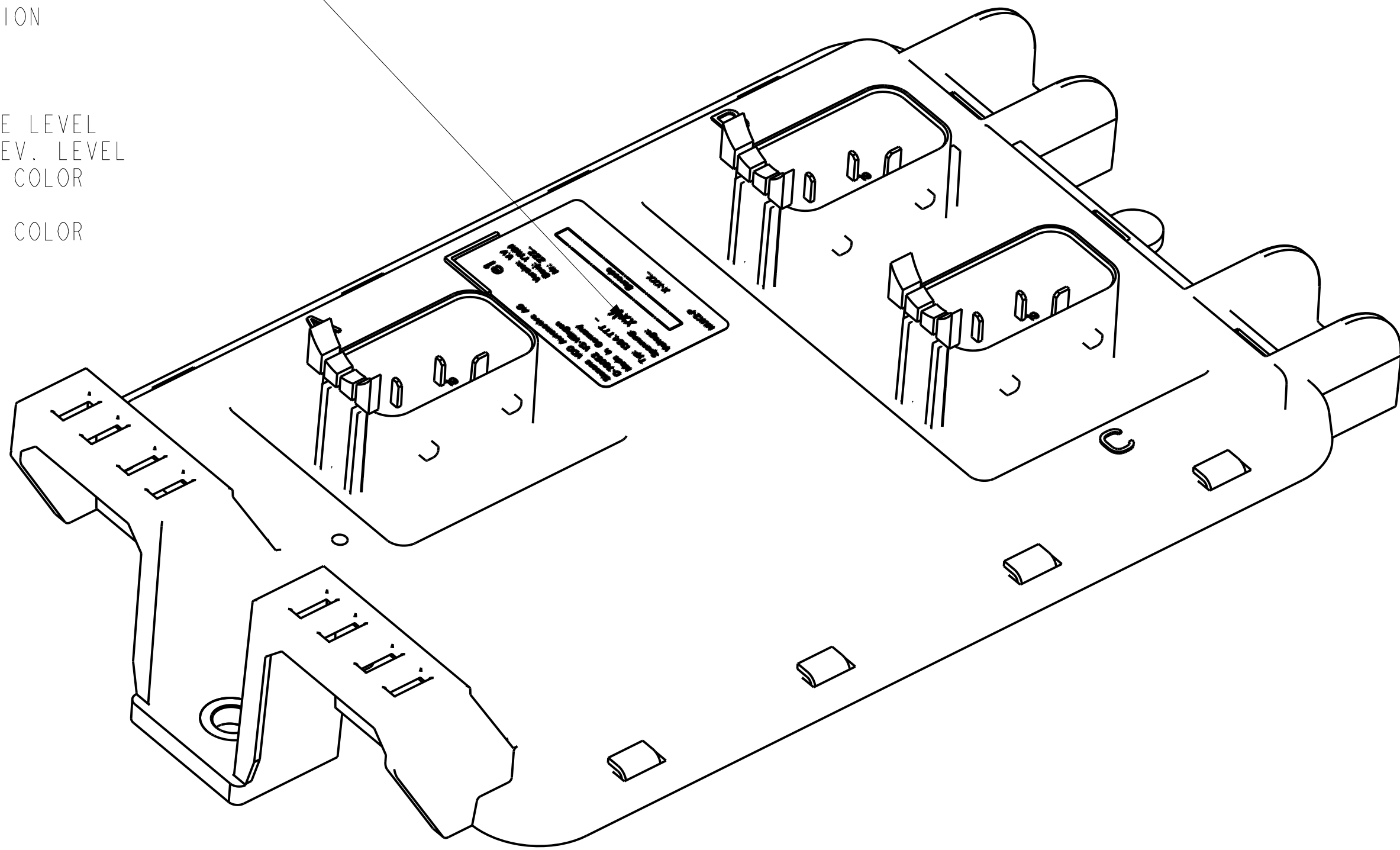
4

3

2

1

PART TRACEABILITY INFORMATION  
TO BE LOCATED APPROXIMATELY  
AS SHOWN.  
PRODUCT LABEL TO INCLUDE  
- SUPPLIER NAME  
- SUPPLIER CODE  
- PRODUCTION LOCATION  
- SUPPLIER P/N  
- PRODUCTION DATE  
- HARDWARE VERSION  
- OPERATING VOLTAGE LEVEL  
- PACCAR P/N AND REV. LEVEL  
- LABEL BACKGROUND COLOR  
SHALL BE: WHITE  
- LABEL FOREGROUND COLOR  
SHALL BE: BLACK



GENERAL NOTES:

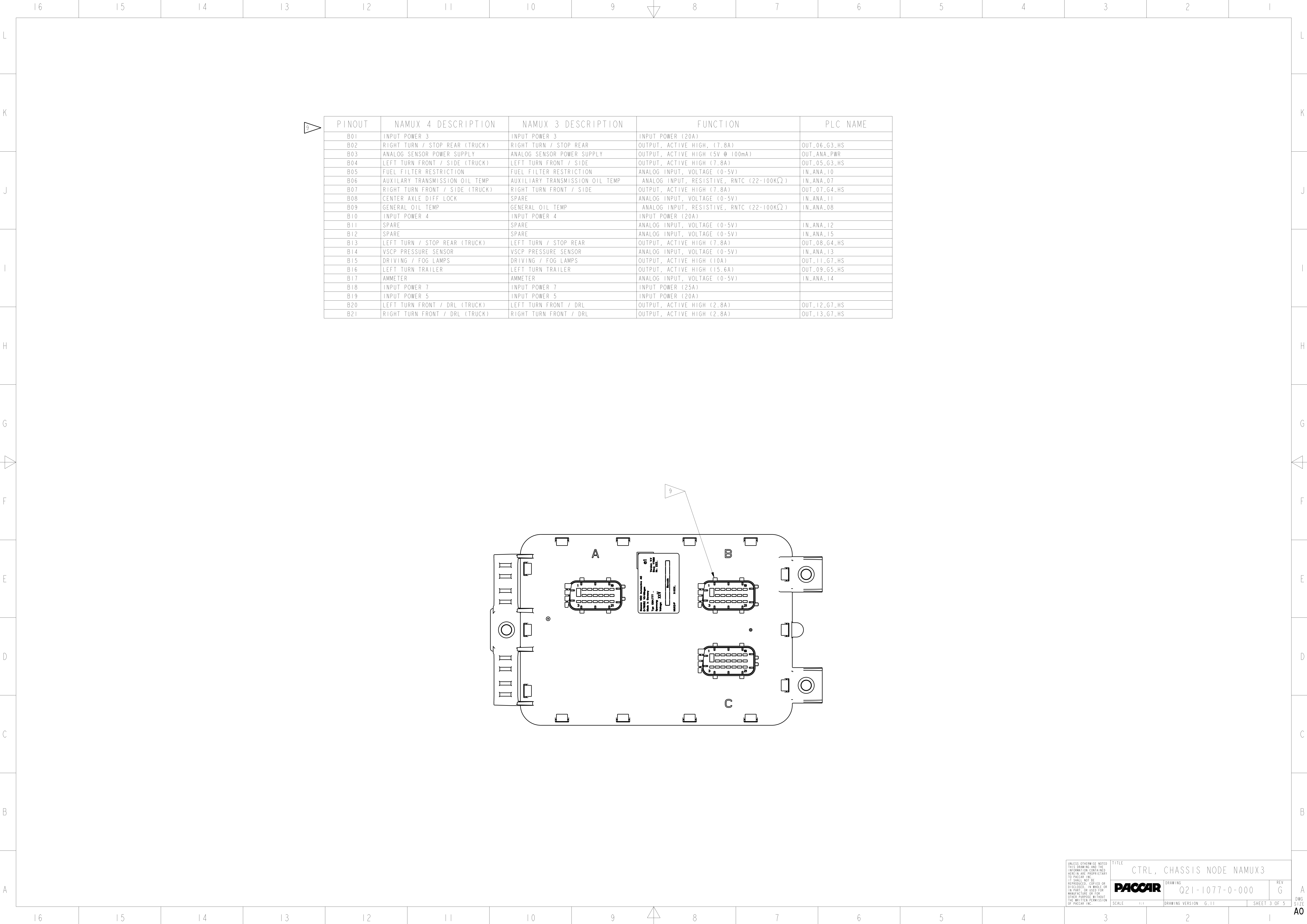
- USE WITH NAMUX 3 AND NAMUX 4.
- ENGINEERING APPROVED SUPPLIER:  
CONTINENTAL CORPORATION.
- COMPONENT SHALL FUNCTION IN ACCORDANCE WITH: Q98-6000E0004
- ACTIVE HIGH INPUTS REQUIRE SYSTEM VOLTAGE TO ACTIVATE.
- ACTIVE LOW INPUTS REQUIRE GROUND TO ACTIVATE.
- NTC INPUTS HAVE HIGH RESISTANCE VALUE FOR LOW TEMP VALUE.
- PTC INPUTS HAVE HIGH RESISTANCE VALUE FOR HIGH TEMP VALUE.
- CONNECTOR LOCATION A: MATES WITH TYCO/AMP 1-1534127-1 (BLACK).
- CONNECTOR LOCATION B: MATES WITH TYCO/AMP 2-1534127-1 (WHITE).
- CONNECTOR LOCATION C: MATES WITH TYCO/AMP 3-1534127-1 (LIGHT BLUE).
- SPECIFIES SOFTWARE VERSION, SEE BOM.

COMPONENT VARIATION TABLE	
TABLE A	
VERSION	DESCRIPTION
-1	OBSOLETE
-2	PCB EMC UPDATE
-3	VOLTAGE REGULATOR CHANGE

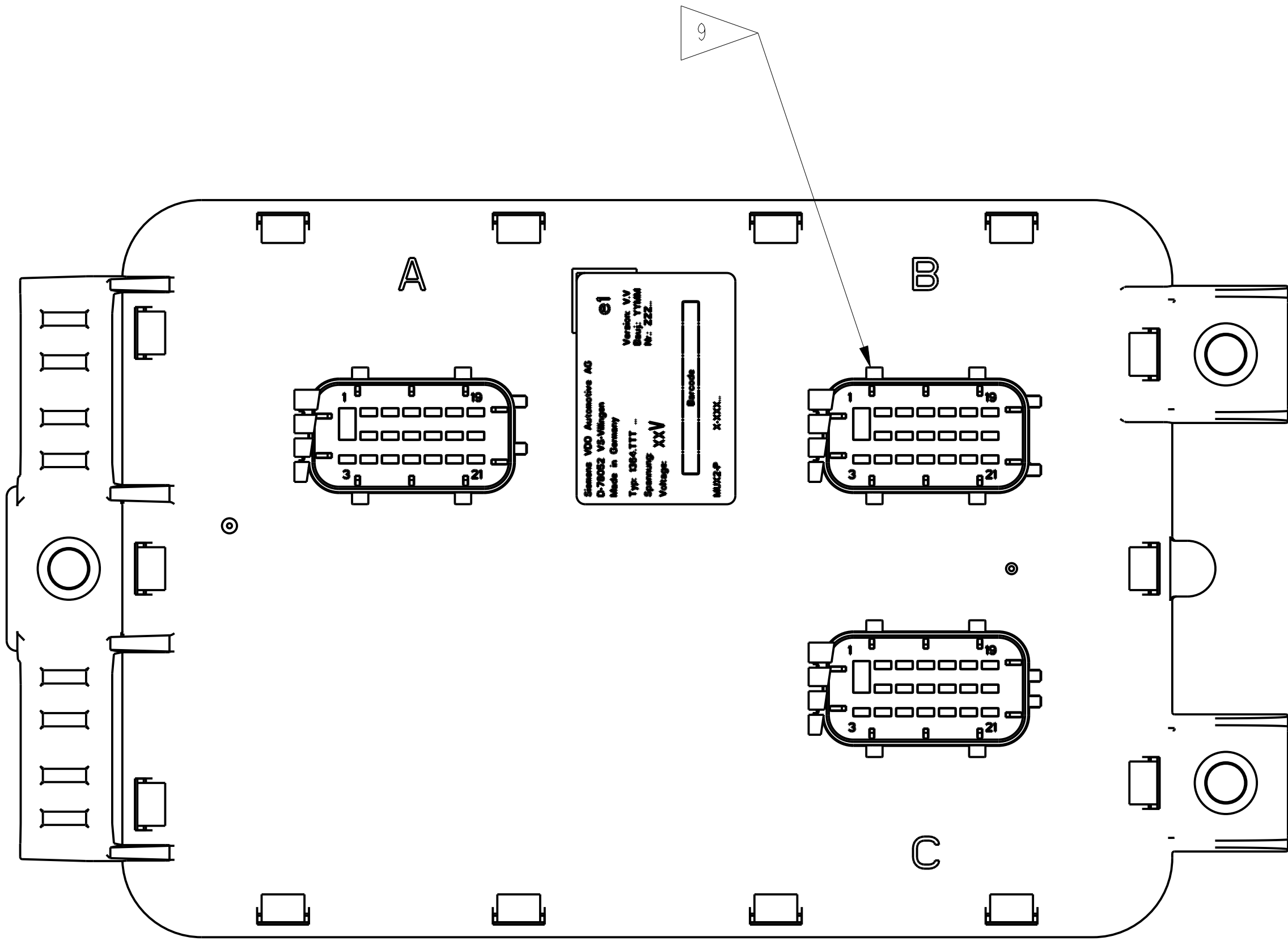
- VERSIONS WITH 'OBSOLETE' STATUS ARE SUPERCEDED BY VERSIONS WITH 'PRODUCTION' STATUS.THERE SHALL BE NO VERSIONS WITH THE STATUS 'SERVICE'.
- SUPPLIER TO MASK THE LABEL FOR PAINT.
- SUPPLIER TO MASK MEMBRANE FOR PAINT.

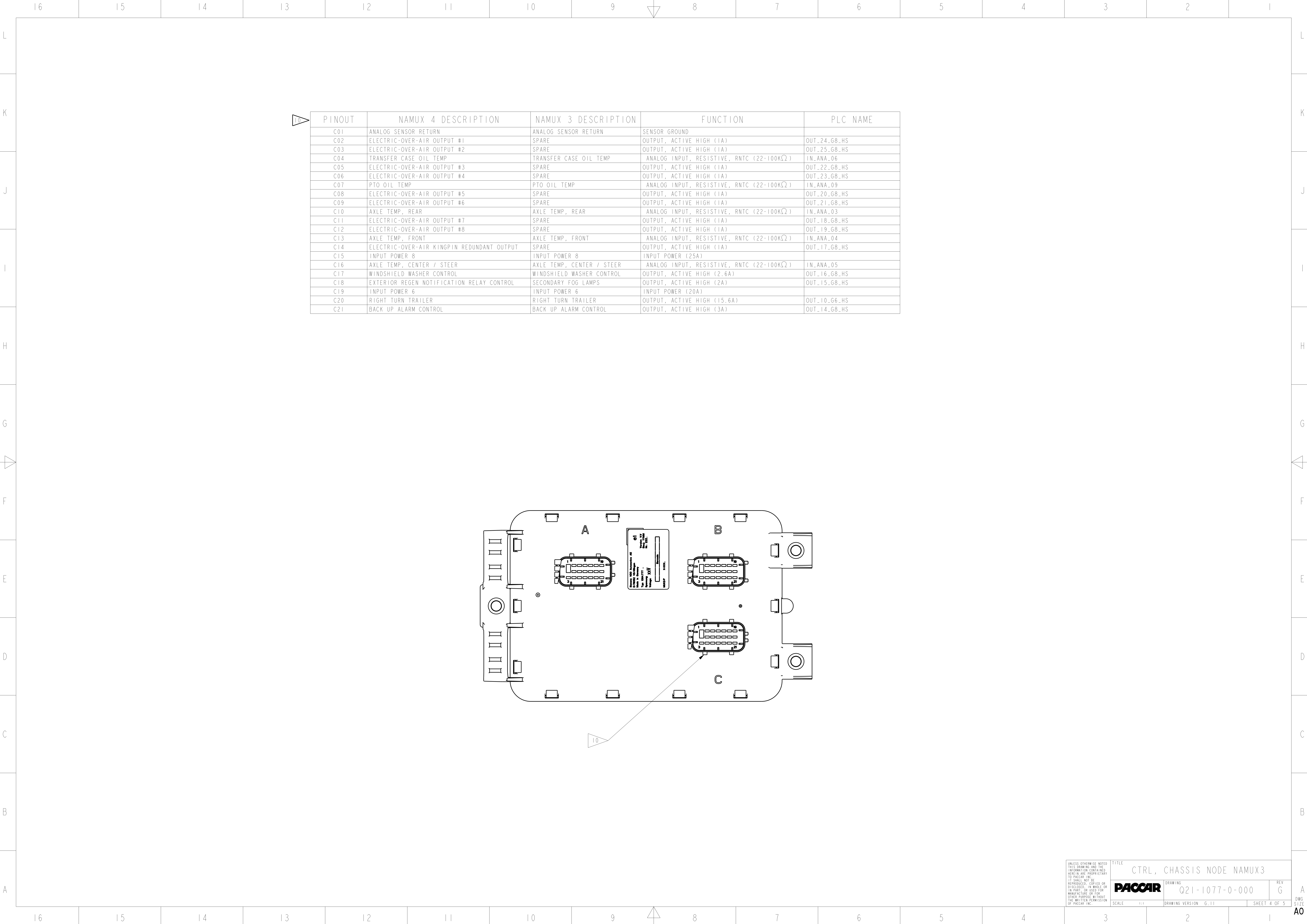
QTY			ITEM PART NUMBER			PRODUCT DESCRIPTION			MATERIAL		
<p>1. THIS DRAWING AND THE INFORMATION CONTAINED HEREIN ARE PROPRIETARY TO PACCAR INC. UNLESS OTHERWISE NOTED AND SHALL NOT BE REPRODUCED, COPIED OR DISCLOSED IN WHOLE OR IN PART, OR USED FOR MANUFACTURE OR FOR OTHER PURPOSES WITHOUT THE WRITTEN PERMISSION OF PACCAR INC.</p> <p>2. DIMENSIONING AND TOLERANCING PER PACCAR CS010B.</p> <p>3. SHOWN ALL DIMS. BREAK SHARP EDGES.</p> <p>4. PART IDENTIFICATION AND TRACEABILITY REQUIREMENTS TO COMPLY WITH PACCAR CS010B.</p> <p>5. THIS DRAWING/SPECIFICATION USES SYMBOLS TO CLASSIFY CHARACTERISTICS. THESE SYMBOLS ARE DEFINED IN THE PACCAR SUPPLIER QUALITY STANDARD.</p> <p>6. EMISSION-RELATED PART: CODE-14 SEE PACCAR CS0334 FOR REQUIREMENTS.</p>						TOLERANCES UNLESS OTHERWISE SPECIFIED ANGLE : $\pm 1^{\circ}$ (X, Y) : $\pm 1^{\circ}$ (X, Y) : $\pm 0.5^{\circ}$		THIRD ANGLE PROJECTION DO NOT SCALE DRAWING		DIMENSION UNITS: MILLIMETERS	
						TITLE CTRL, CHASSIS NODE NAMUX3		DRAWING Q21-1077-0-000		REV G	
SCALE DRAWING VERSION			1:1 G.11			SHEET 1 OF 5			DWG SIZE A0		

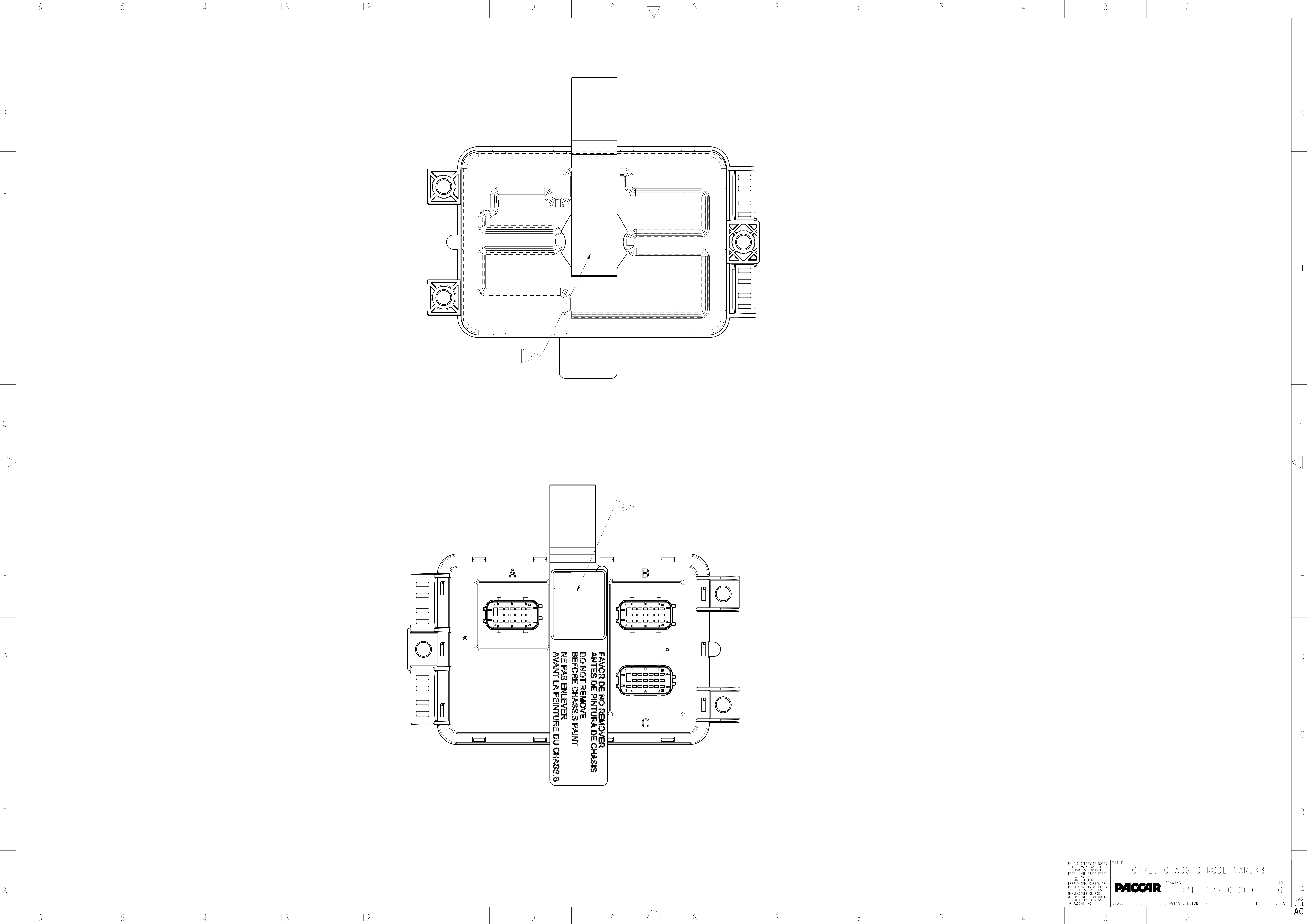




PINOUT	NAMUX 4 DESCRIPTION	NAMUX 3 DESCRIPTION	FUNCTION	PLC NAME
B01	INPUT POWER 3	INPUT POWER 3	INPUT POWER (20A)	
B02	RIGHT TURN / STOP REAR (TRUCK)	RIGHT TURN / STOP REAR	OUTPUT, ACTIVE HIGH, (7.8A)	OUT_06_G3_HS
B03	ANALOG SENSOR POWER SUPPLY	ANALOG SENSOR POWER SUPPLY	OUTPUT, ACTIVE HIGH (5V @ 100mA)	OUT_ANA_PWR
B04	LEFT TURN FRONT / SIDE (TRUCK)	LEFT TURN FRONT / SIDE	OUTPUT, ACTIVE HIGH (7.8A)	OUT_05_G3_HS
B05	FUEL FILTER RESTRICTION	FUEL FILTER RESTRICTION	ANALOG INPUT, VOLTAGE (0-5V)	IN_ANA_10
B06	AUXILARY TRANSMISSION OIL TEMP	AUXILIARY TRANSMISSION OIL TEMP	ANALOG INPUT, RESISTIVE, RNTC (22-100KΩ)	IN_ANA_07
B07	RIGHT TURN FRONT / SIDE (TRUCK)	RIGHT TURN FRONT / SIDE	OUTPUT, ACTIVE HIGH (7.8A)	OUT_07_G4_HS
B08	CENTER AXLE DIFF LOCK	SPARE	ANALOG INPUT, VOLTAGE (0-5V)	IN_ANA_11
B09	GENERAL OIL TEMP	GENERAL OIL TEMP	ANALOG INPUT, RESISTIVE, RNTC (22-100KΩ)	IN_ANA_08
B10	INPUT POWER 4	INPUT POWER 4	INPUT POWER (20A)	
B11	SPARE	SPARE	ANALOG INPUT, VOLTAGE (0-5V)	IN_ANA_12
B12	SPARE	SPARE	ANALOG INPUT, VOLTAGE (0-5V)	IN_ANA_15
B13	LEFT TURN / STOP REAR (TRUCK)	LEFT TURN / STOP REAR	OUTPUT, ACTIVE HIGH (7.8A)	OUT_08_G4_HS
B14	VSCP PRESSURE SENSOR	VSCP PRESSURE SENSOR	ANALOG INPUT, VOLTAGE (0-5V)	IN_ANA_13
B15	DRIVING / FOG LAMPS	DRIVING / FOG LAMPS	OUTPUT, ACTIVE HIGH (10A)	OUT_11_G7_HS
B16	LEFT TURN TRAILER	LEFT TURN TRAILER	OUTPUT, ACTIVE HIGH (15.6A)	OUT_09_G5_HS
B17	AMMETER	AMMETER	ANALOG INPUT, VOLTAGE (0-5V)	IN_ANA_14
B18	INPUT POWER 7	INPUT POWER 7	INPUT POWER (25A)	
B19	INPUT POWER 5	INPUT POWER 5	INPUT POWER (20A)	
B20	LEFT TURN FRONT / DRL (TRUCK)	LEFT TURN FRONT / DRL	OUTPUT, ACTIVE HIGH (2.8A)	OUT_12_G7_HS
B21	RIGHT TURN FRONT / DRL (TRUCK)	RIGHT TURN FRONT / DRL	OUTPUT, ACTIVE HIGH (2.8A)	OUT_13_G7_HS







UNLESS OTHERWISE NOTED THIS DRAWING AND THE INFORMATION CONTAINED HEREIN ARE PROPRIETARY TO PACCAR INC. IT SHALL NOT BE REPRODUCED, COPIED OR DISCLOSED, IN WHOLE OR IN PART, OR USED FOR MANUFACTURE OR FOR OTHER PURPOSE WITHOUT THE WRITTEN PERMISSION OF PACCAR INC.	TITLE		CTRL, CHASSIS NODE NAMUX3		REV G	A	
	DRAWING		Q21-1077-0-000				
	SCALE 1:1		DRAWING VERSION G, 11				SHEET 5 OF 5
						DWG SIZE	